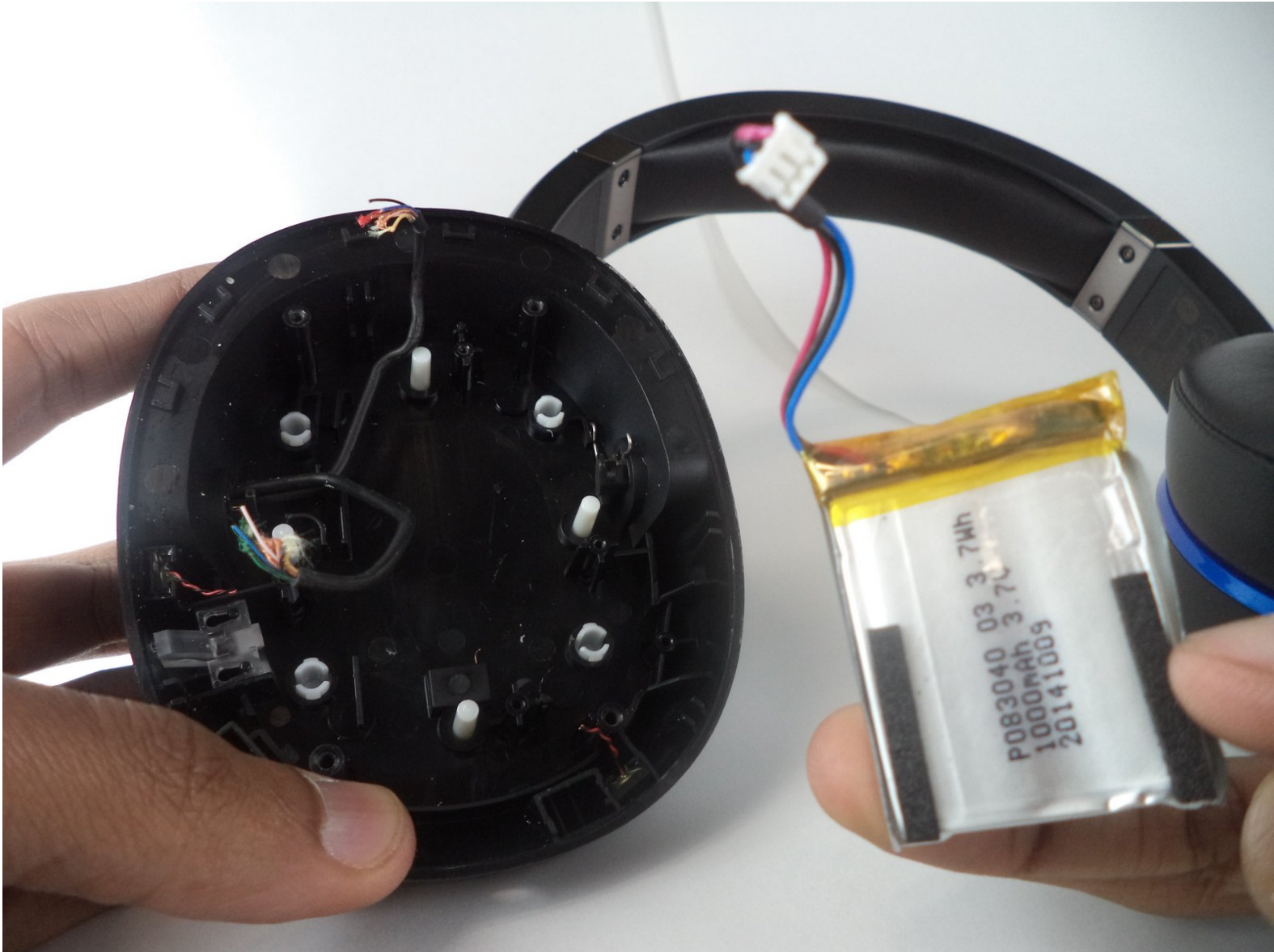




Turtle Beach Elite 800 Battery Replacement

Written By: Johnny Lofton





TOOLS:

- [Phillips #0 Screwdriver](#) (1)
- [Soldering Workstation](#) (1)
- [Small Needle Nose Pliers](#) (1)

Optional for unplugging battery connector



PARTS:

- [Replacement Battery for Turtle Beach Elite 800](#) (1)

Battery

1800 mAh , vs OEM 1000 mAh. Part

suggested by Reddit :

https://www.reddit.com/r/fixit/comments/c308fe/looking_for_advice_on_replacing_my_turtle_beach/

Step 1 — Ear Cushion



- To remove the ear cushions, press firmly down and rotate them clockwise, it should twist about 2mm and release, allowing you to pull it off.

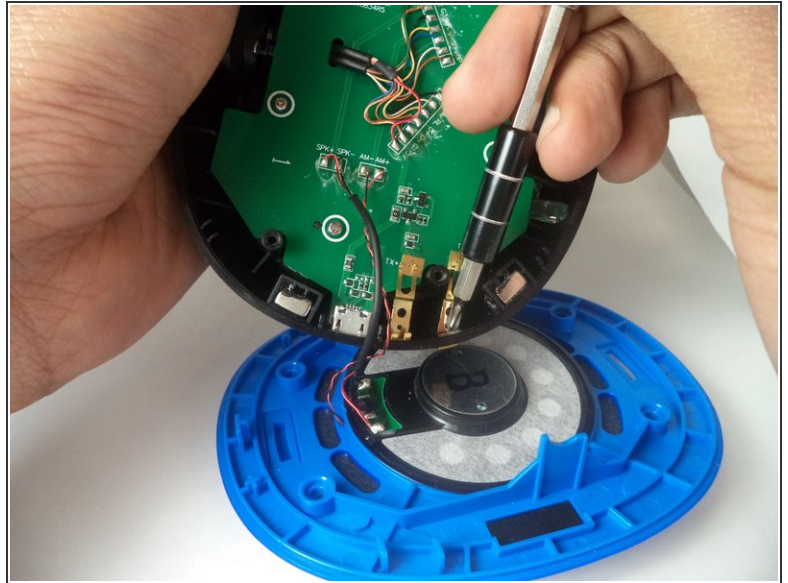
 When reassembling, be sure to line up the locking plates.

Step 2 — Audio Board



- Remove the screws (9.47 mm Phillips head) from the blue plating on the headset to reveal the inside.

Step 3

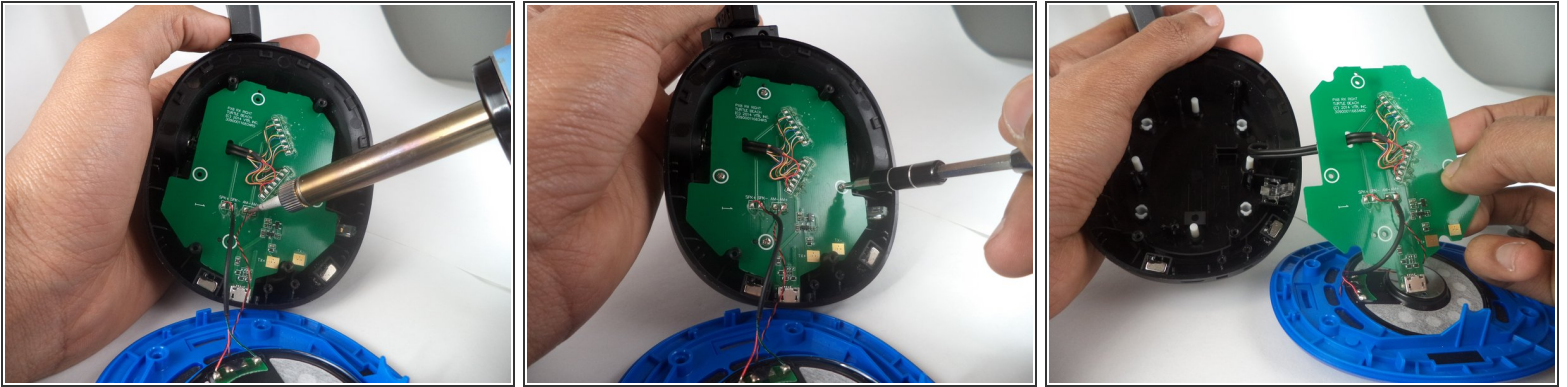


- If you are working on the LEFT side ear, you will first have to detach the battery by gently unplugging the white plug on the top of the board.

⚠ Make sure when unplugging the battery to not pull the manilla colored part which is attached to the board, but the white plug instead.

- If you are working on the RIGHT side ear, you will first have to remove the charging contacts (2 7.92 mm Phillips screws).

Step 4



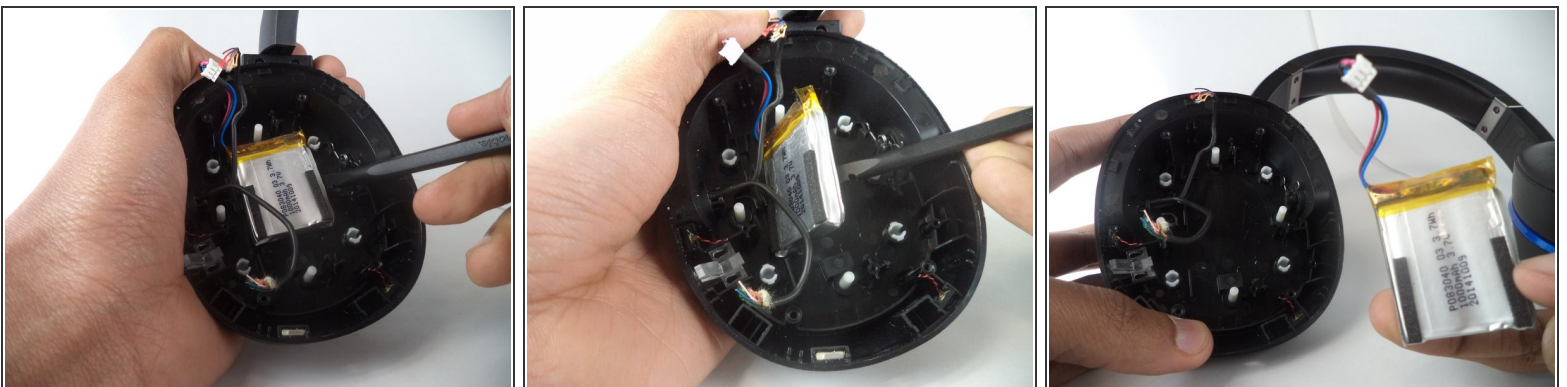
- Desolder the necessary wires. (Each side will be slightly different.)

 Be careful when using a soldering iron. Refer to the [desoldering guide](#) for tips.

 For the purpose of this guide we clipped the wires connected to the board.

- Remove the 4 screws (7.71mm Phillips head) using the #0 screw bit, that are holding the board in place.
- Finally, remove the audio board.

Step 5 — Battery



- Remove the battery by carefully prying it from the headset.

To reassemble your device, follow these instructions in reverse order.