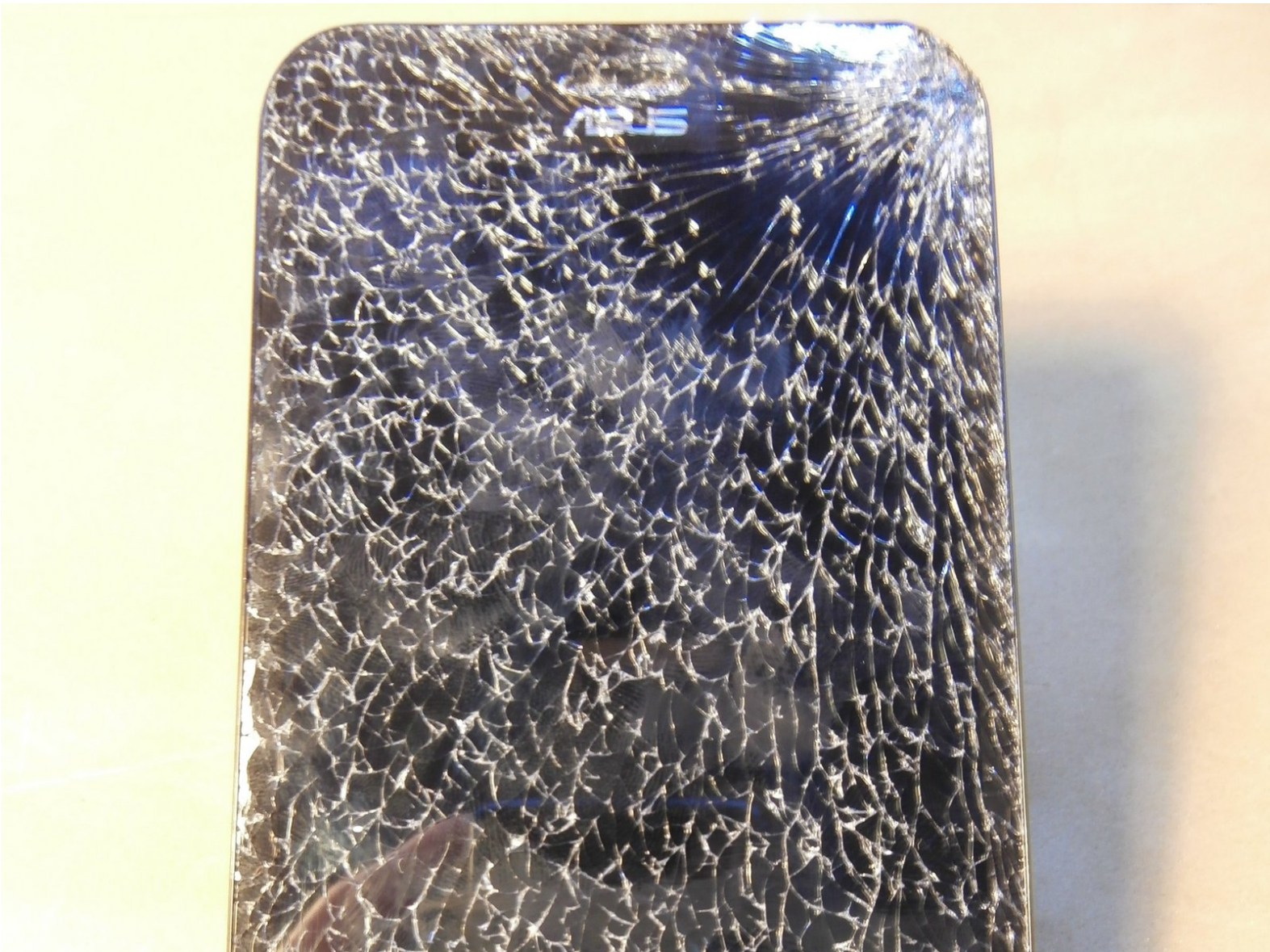




Asus ZenFone 2 Laser ZE550KL Display Replacement

Display Replacement Guide to Asus ZenFone 2 Laser 5" ZE550KL Model

Written By: gwsLabs



INTRODUCTION

Use this guide to replace the display in your Asus ZenFone 2 Laser 5" Model ZE550KL



TOOLS:

- [Phillips #000 Screwdriver](#) (1)
- [iFixit Opening Picks \(Set of 6\)](#) (1)
- [Heavy-Duty Spudger](#) (1)
- [Tweezers](#) (1)



PARTS:

- [New Item](#) (1)

Step 1 — SIM and battery removal



- Remove the back cover.
- Disconnect the battery.
- Remove the SIM card and the micro SD card.

Step 2 — Remove the screws



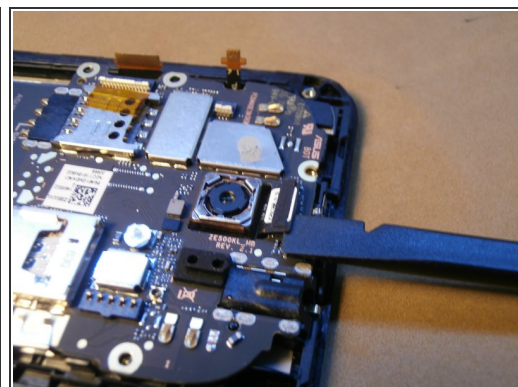
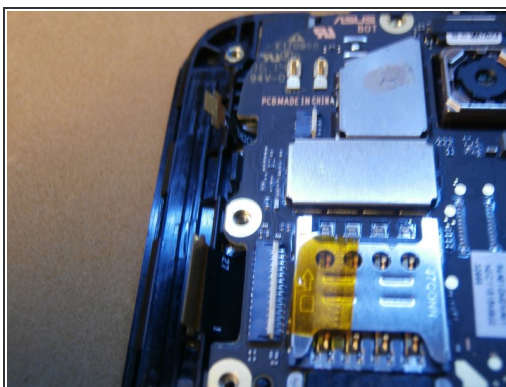
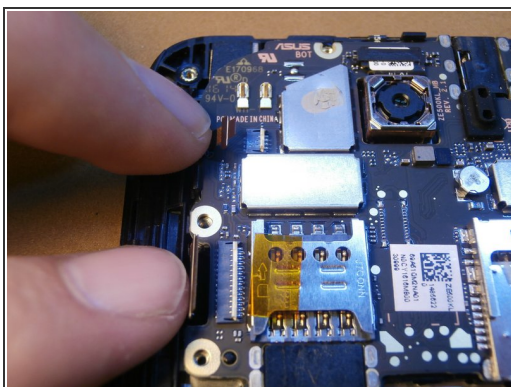
- Unscrew the 15 screws

Step 3 — Internal back cover



- Remove the plastic back with opening picks making sure not to break the clips that hold it in place

Step 4 — Flat cable display



- Disconnect the two flat cables by lifting the white bracket
- Unplug the camera

Step 5 — Rear speaker



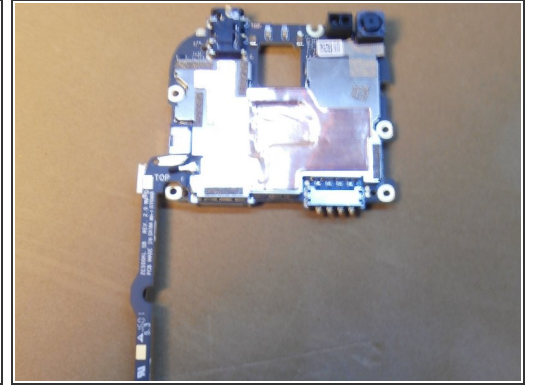
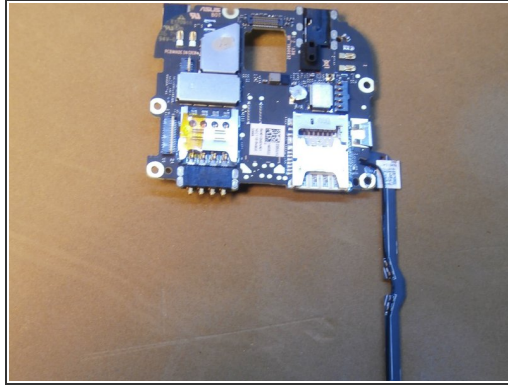
- With the help from a spudger, remove the rear speaker

Step 6 — Motherboard



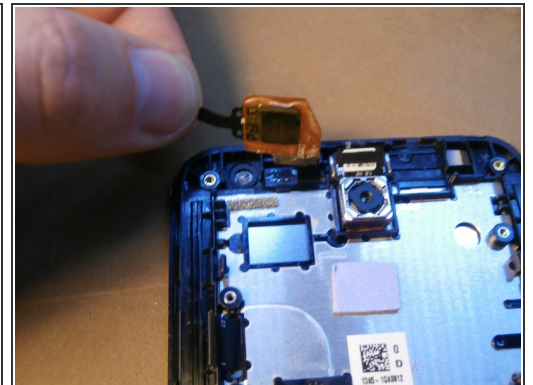
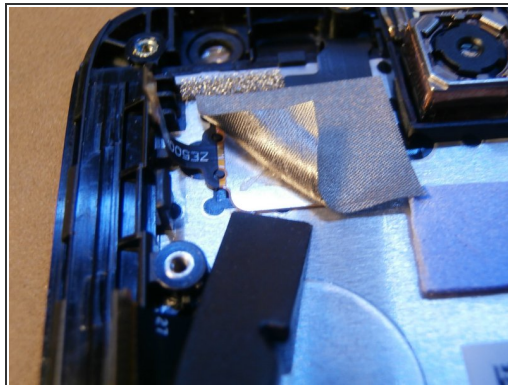
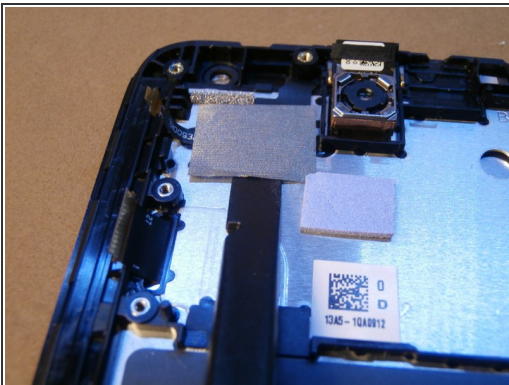
- Starting from the bottom lift the motherboard

Step 7 — Frame Assembly



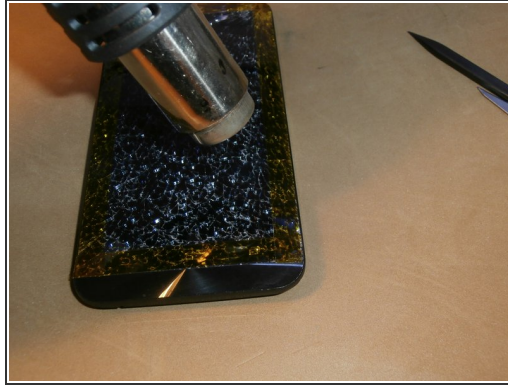
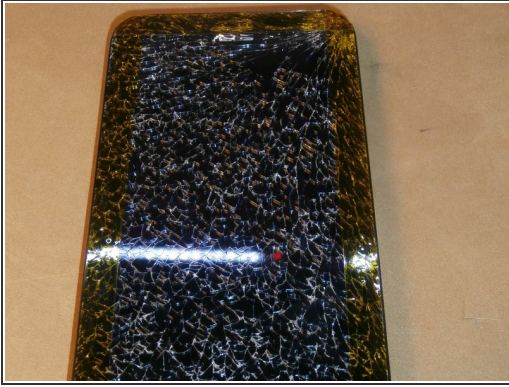
- Mother board.

Step 8 — Touchscreen driver



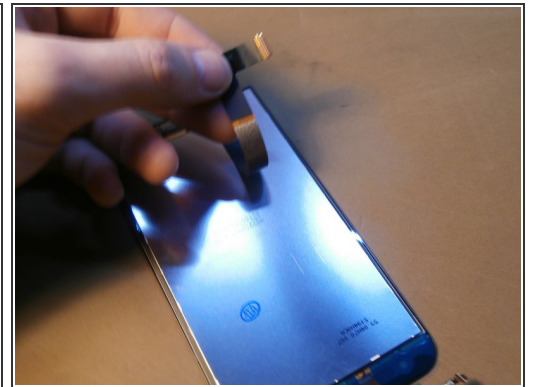
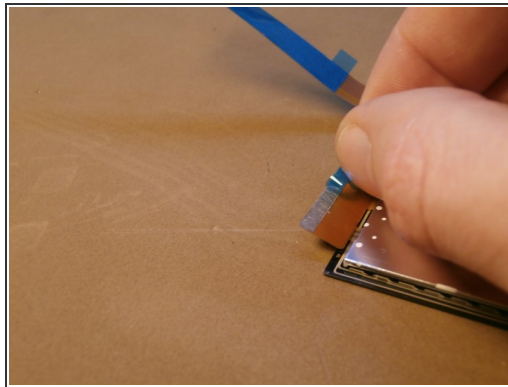
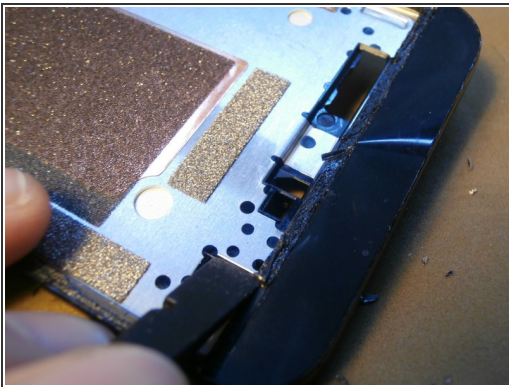
- Disconnect the touchscreen driver to remove the screen

Step 9 — Screen removal



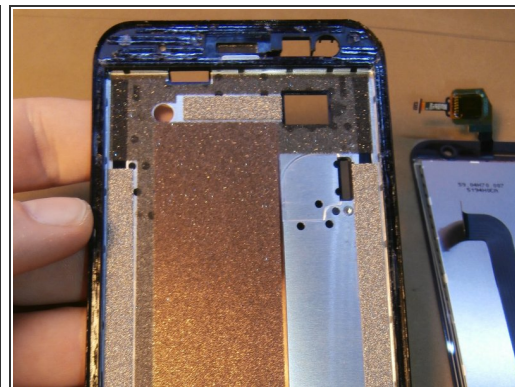
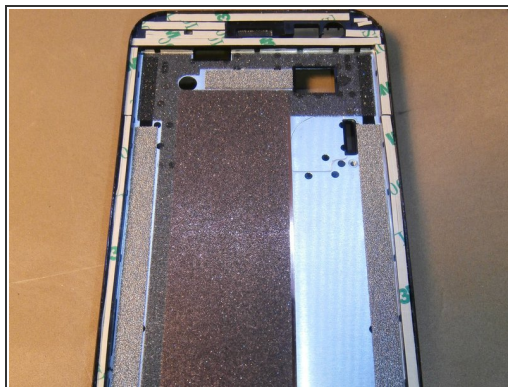
- With the help of a hair dryer, heat gun or an iOpener remove the screen from the phone's frame

Step 10 — Preparation of the new screen



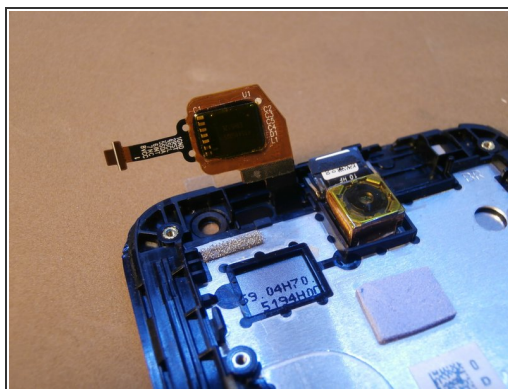
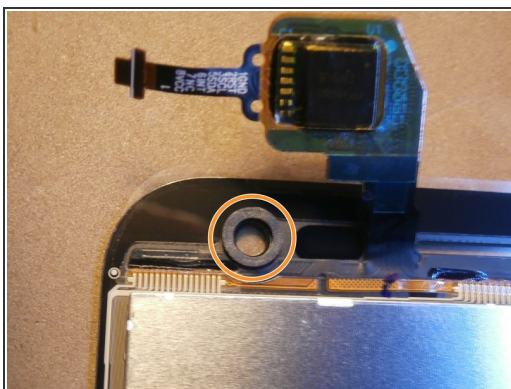
- Remove glue residues on the perimeter of the frame
- Re-adhere the display

Step 11 — Screen adhesive



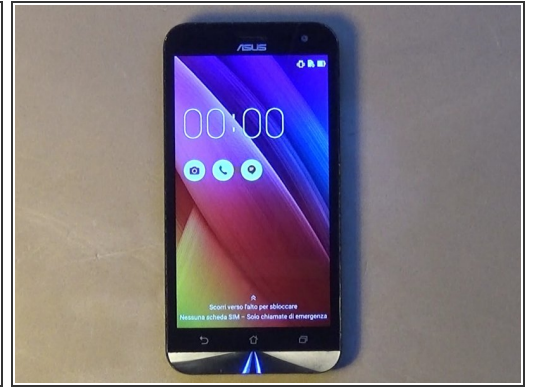
- apply the double-sided adhesive to the frame

Step 12 — New screen



- Replace or reposition the dust gasket of the front camera before installing the new screen
- Insert the new screen into position by passing the flat into the specific grooves

Step 13 — Reassembly



- Refit the logic board

To reassemble your device, follow these instructions in reverse order.