



Garmin Nuvi 42LM Battery Replacement

This guide will demonstrate how to replace the battery of a Garmin Nuvi 42LM.

Written By: Charlene Gray



INTRODUCTION

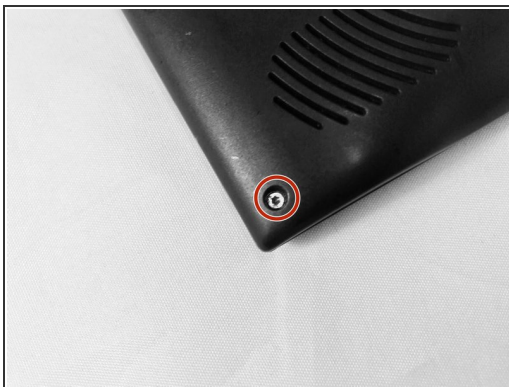
Before replacing the battery, visit this device's troubleshooting page to determine whether you need to replace the battery. Follow the steps in this guide if you need to replace the battery.



TOOLS:

- [T5 Torx Screwdriver](#) (1)
 - [iFixit Opening Tools](#) (1)
-

Step 1 — Battery



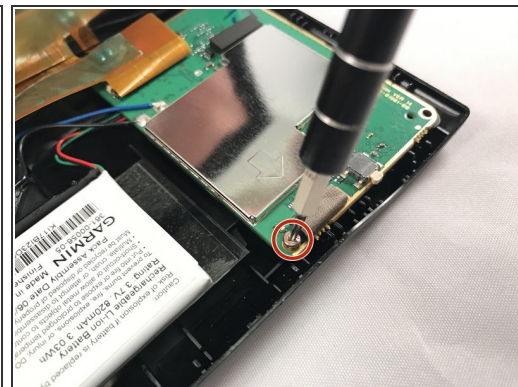
- Remove the four screws on the back of the GPS using the T5 Torx screwdriver.

Step 2



- Pry the GPS open using a plastic opening tool.
- ⓘ When prying open the device, use caution to avoid damaging the motherboard.

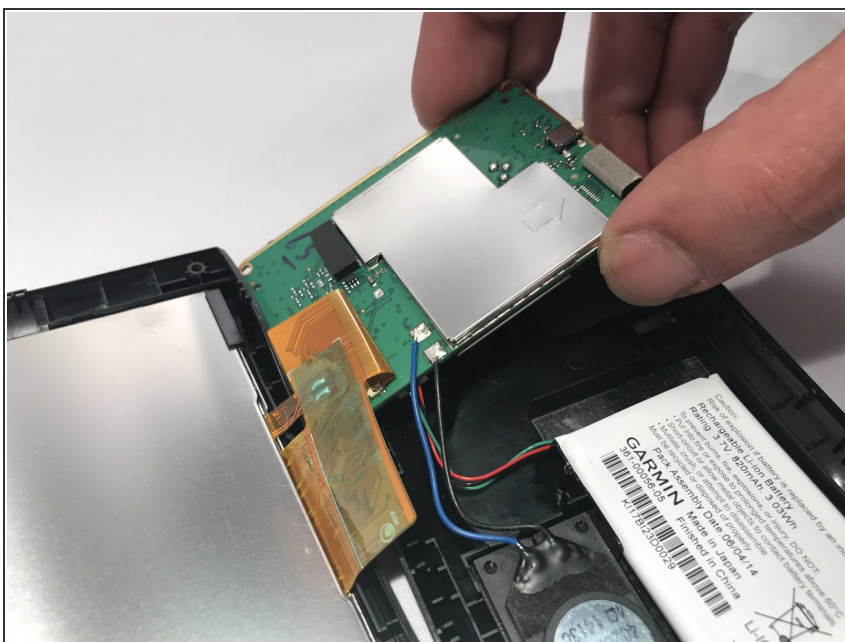
Step 3



- Using the T5 Torx screwdriver, remove the two screws located on the motherboard.

i There are two screws - one in the back and one in the front.

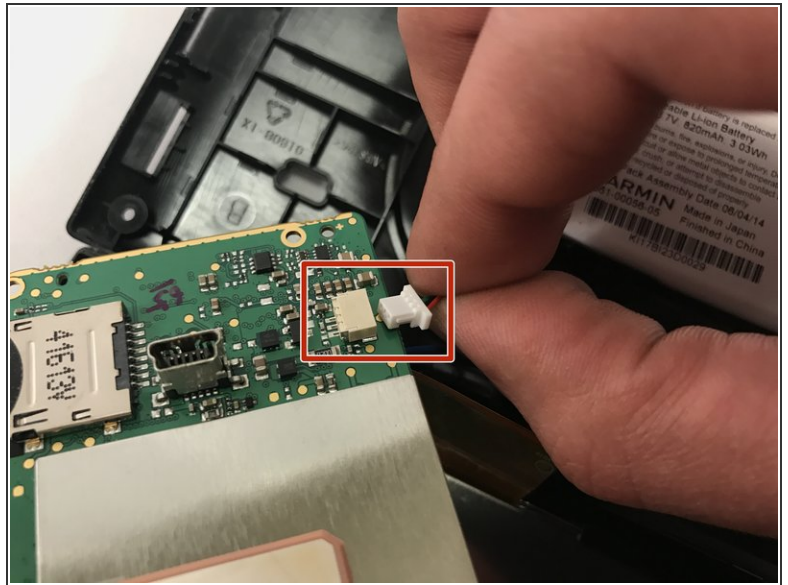
Step 4



- Move the motherboard from from its designated location on the GPS.

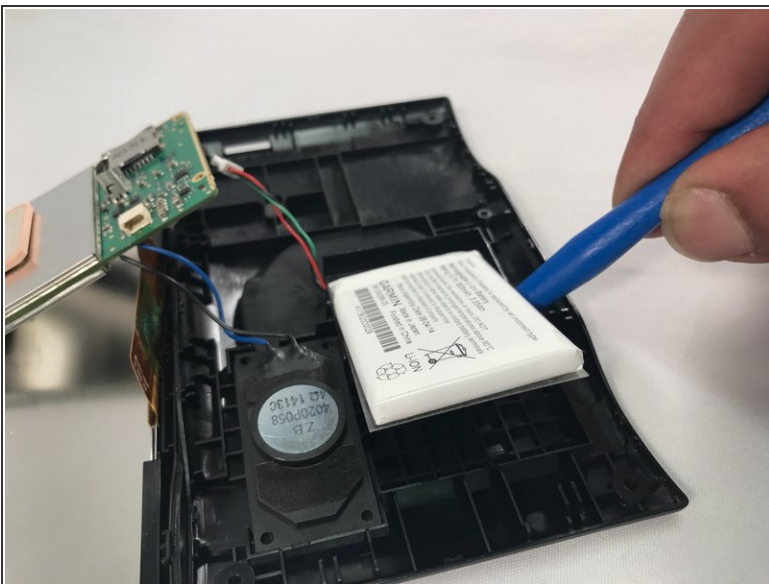
i Do not pull on red, green, and black cables when repositioning the motherboard.

Step 5



- Gently unplug the red, green, and black bundled cable to remove the battery.

Step 6



- Use blue plastic opening tool to carefully pry the battery from the GPS.
- i** You might need to use additional force when prying because there is adhesive glue on the back of the battery.

To reassemble your device, follow these instructions in reverse order.