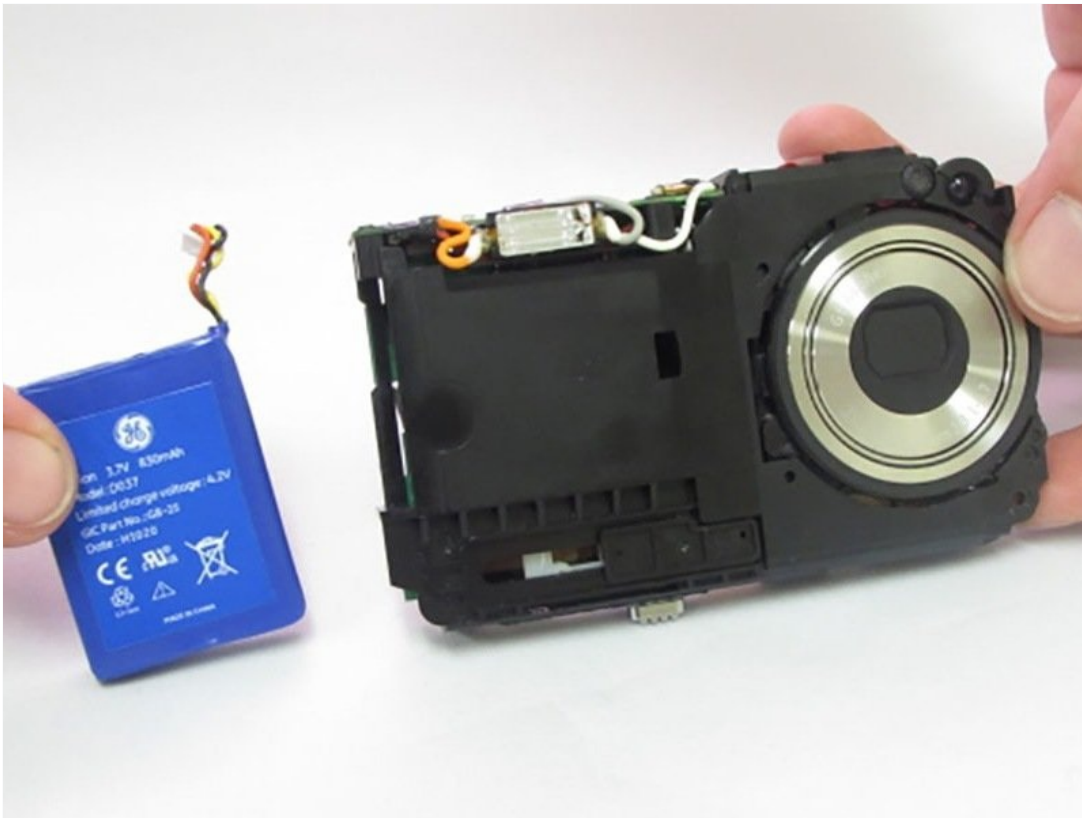




General Electric Create Jason Wu Battery Replacement

This guide will exhibit the steps necessary to...

Written By: Kailee Poe



INTRODUCTION

This guide will exhibit the steps necessary to replace the battery on your General Electric Create Jason Wu.

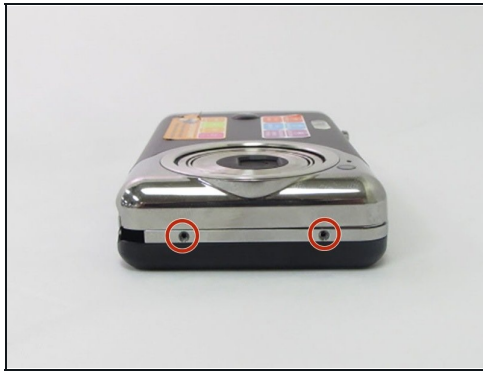
TOOLS:

Precision Tweezers Set (1)
iFixit Opening Tool (1)
Phillips #00 Screwdriver (1)
Precision screwdriver kit (Phillips bits) (1)

PARTS:

Magnetic Project Mat (1)

Step 1 — General Electric Create Jason Wu Casing Disassembly



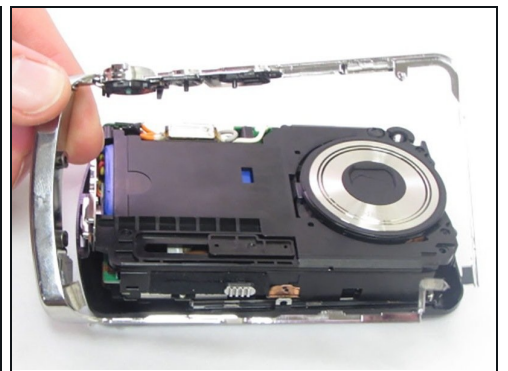
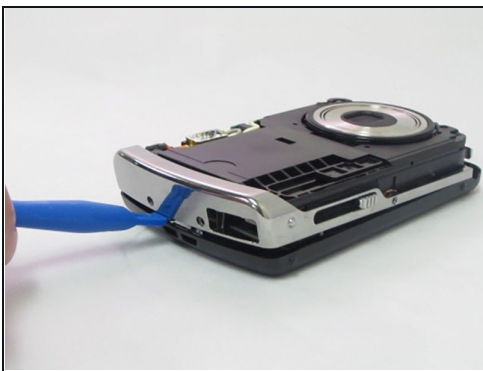
- Begin by removing the 5 screws (located: 2 screws on either side and 1 screw on the bottom) using the PH000 head in the Precision Phillips Screwdriver.
- ⓘ These screws were missing in our example. These screws should have been small Phillips PH000 screws 1.5mm in length.
- ⚠ These screws are very small. To keep from losing any pieces, place all small metals on a magnetic project mat.

Step 2



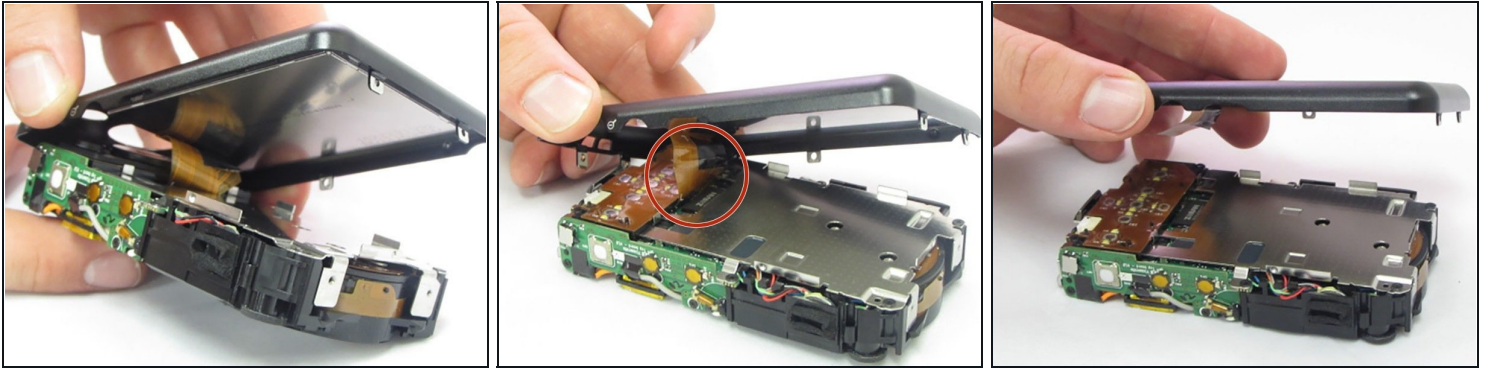
- After the screws are removed, pull the front casing up and away from the camera.
- ① If the casing is difficult to remove, use a plastic opening tool to gently pry up on the front as shown.

Step 3



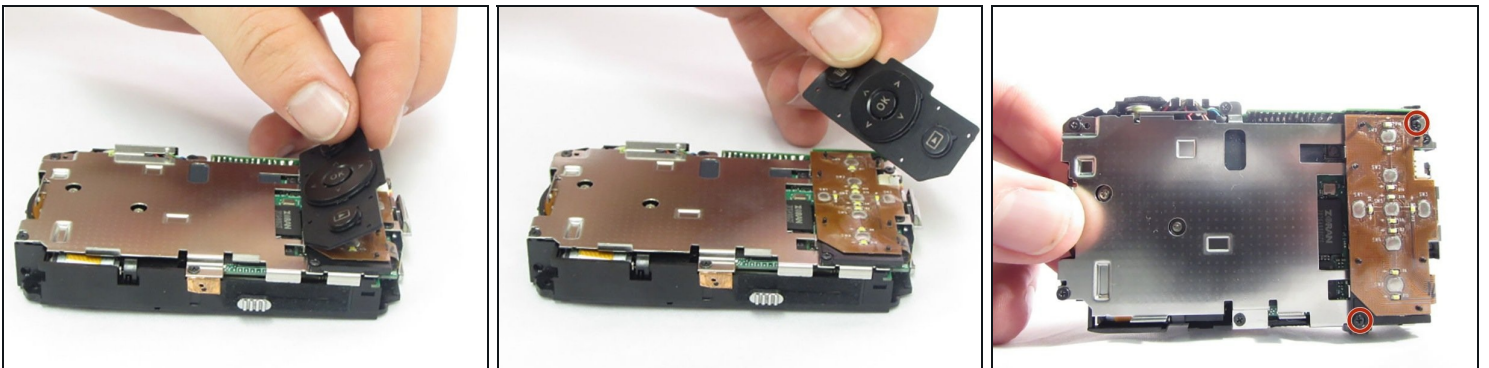
- Using your hands or an opening tool, pry off the silver frame, taking special care at the top of the camera where the buttons are as it is a little harder to pry off.
- ① If the back casing is loose from the camera body, it may be easier to perform step 4 first, then accomplish this step. Proceed as your unit allows.

Step 4



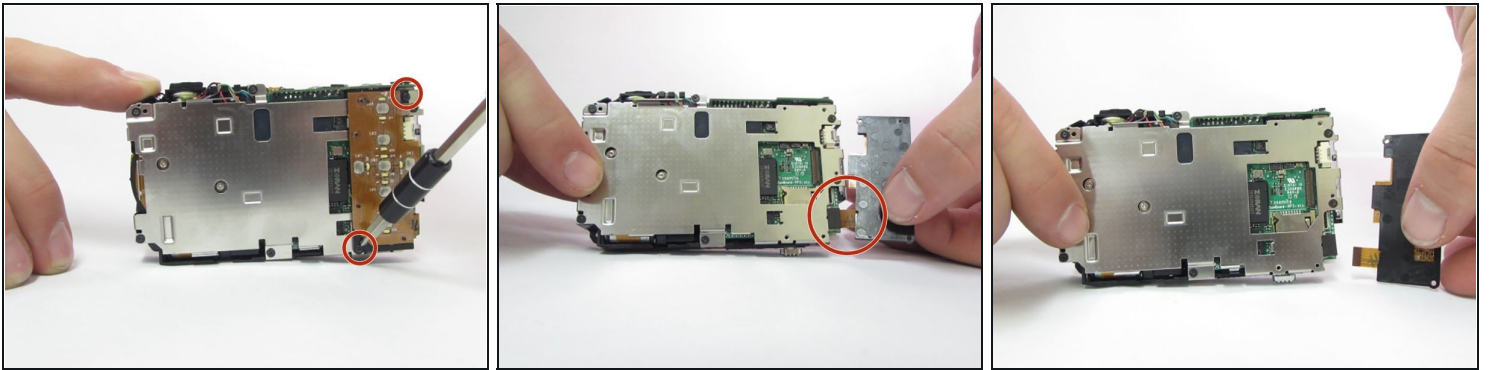
- The last part of the casing to disconnect is the back that houses the LCD screen.
 - The screen is attached by a connection ribbon. Gently pull the casing and screen away from the camera body to disconnect the casing.
 - ⓘ The LCD screen is held onto the back casing by a small amount of adhesive. This may come loose during this process. Do not worry if they become separated.
- ⚠ This plug and the connection ribbon are fragile, try not to tear the connection ribbon when disconnecting.

Step 5 — General Electric Create Jason Wu Interior Disassembly



- After the casing is removed, use your fingers to carefully lift up on the rubber pad, if it didn't already fall out during step 4.
- ⓘ The pad isn't secured to the camera so it will lift up and pull away easily.
- After the pad is removed, the 2 Phillips head screws holding the control board will be exposed.

Step 6

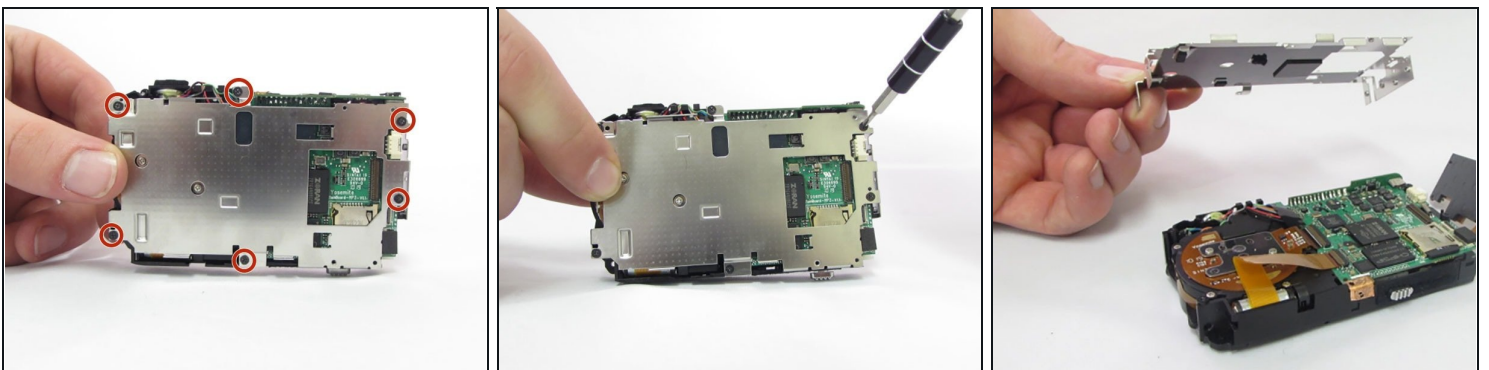


- Using the Phillips precision screwdriver with the PH000 Phillips bit, remove the two 1.5mm screws.

⚠ Although the 2 screws are removed, the button board is still attached with a connection ribbon.

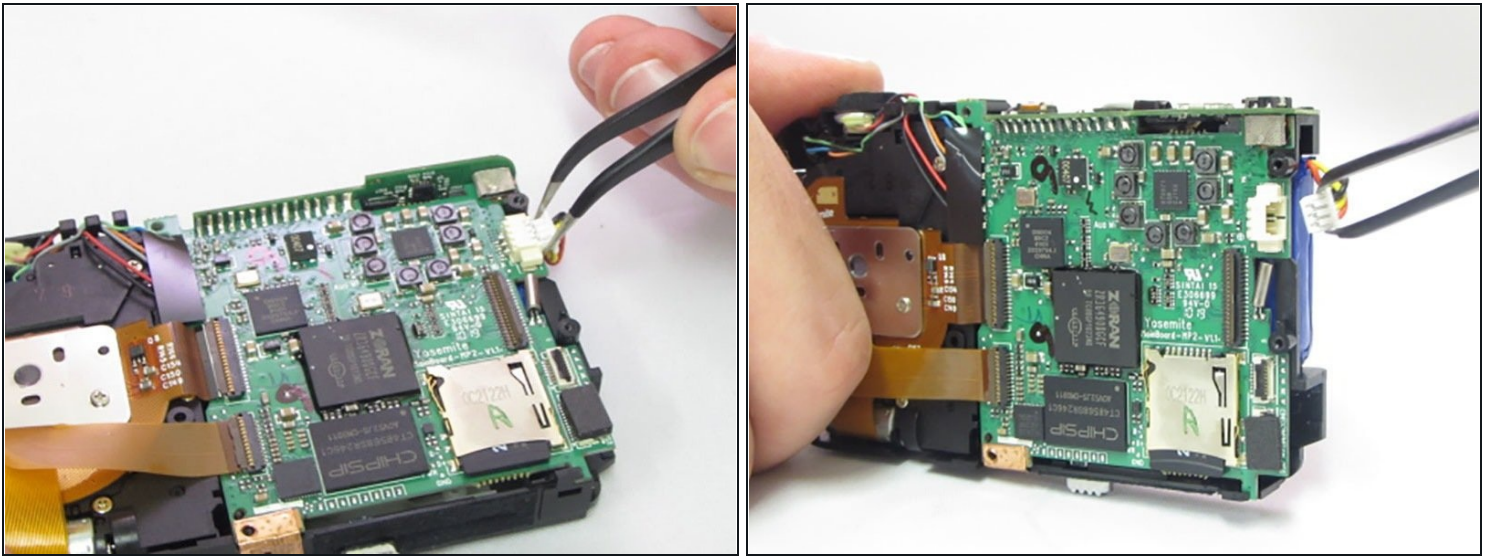
- With a firm grip towards the bottom of the control board, gently pull away from the camera, removing the ribbon from the connector.

Step 7



- Locate the six 1.5mm Phillips screws that are holding on the interior camera frame.
- Using the Phillips precision screwdriver and the PH000 Phillips bit, remove the 6 screws.
- With the screws removed, the interior frame will no longer be fastened to the camera body and can be lifted up and away.

Step 8 — Battery



- Using the Curved Precision Tweezers, detach battery plug from socket.
- ❗ Some may find the tweezers unnecessary for this step and instead may use their fingers to gently detach the plug.

Step 9



- Swap the [3.0 Flathead](#) bit into the precision screw driver.
- On the front of the camera locate the small rectangular slot where the battery is exposed.
- Use the flathead bit to gently pry on the battery to start pushing it out of the camera, allowing it to become loose.

⚠ Do not pull the battery out too hard or the wires will break.

To reassemble your device, follow these instructions in reverse order.