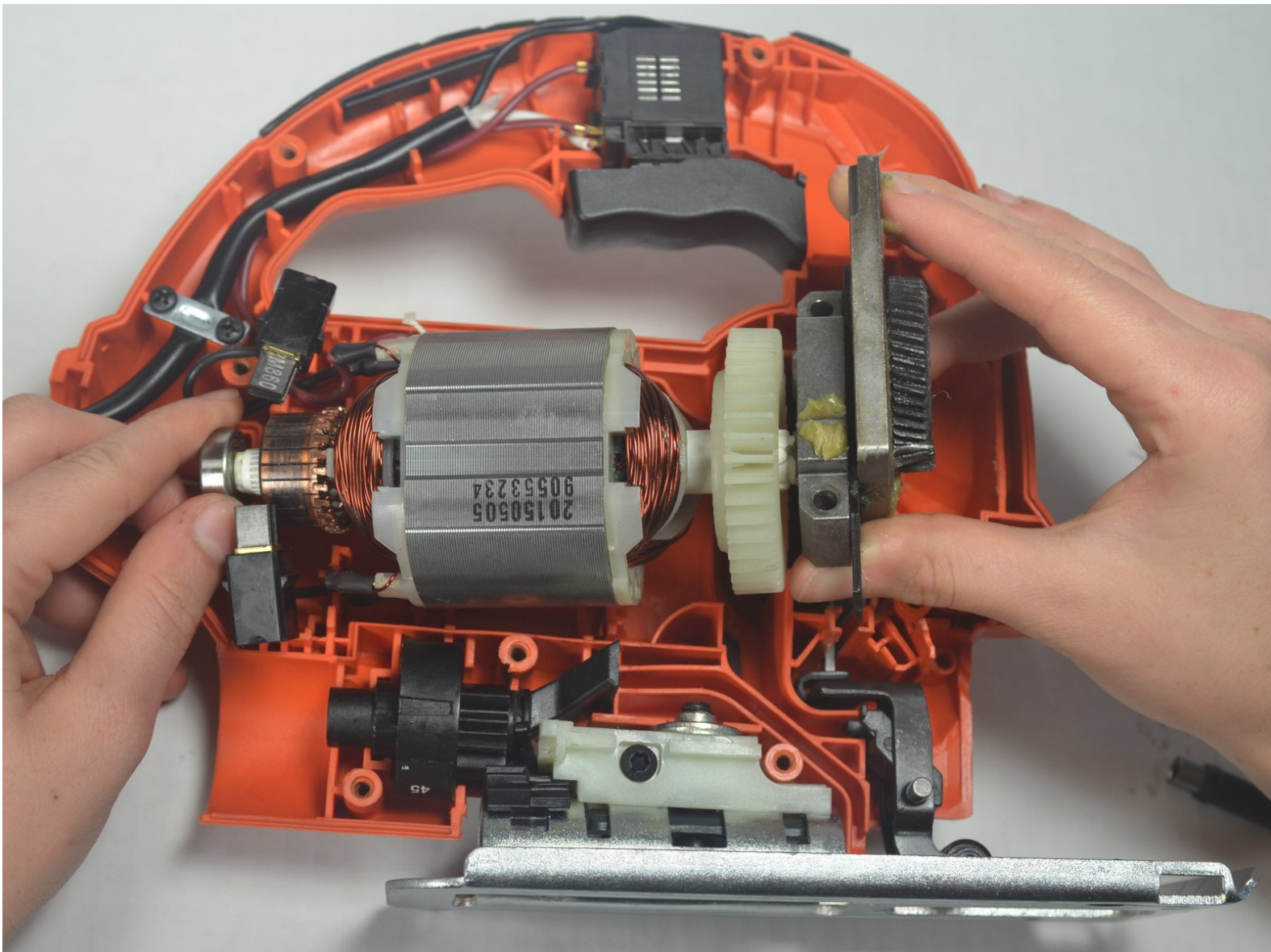




Black and Decker JS660 Motor Replacement

How to replace a damaged or broken Motor Replacement of the Black and Decker JS660 Jigsaw

Written By: Katherine Thomas



INTRODUCTION

This guide will teach the user to easily remove the motor. To do this most components of the saw must first be removed.



TOOLS:

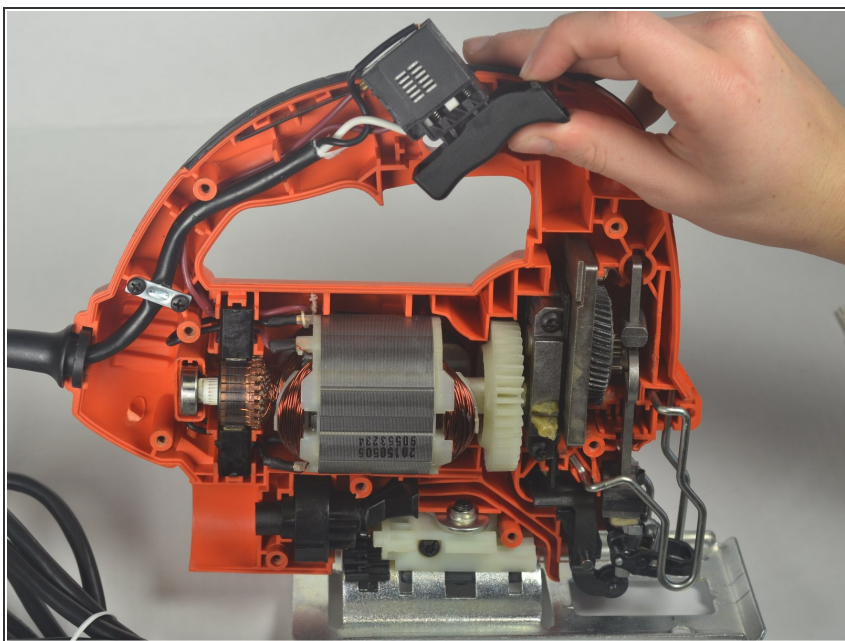
- [T15 Torx Screwdriver](#) (1)
 - [iFixit Opening Tools](#) (1)
 - [T20 Torx Screwdriver](#) (1)
-

Step 1 — Housing Disassembly



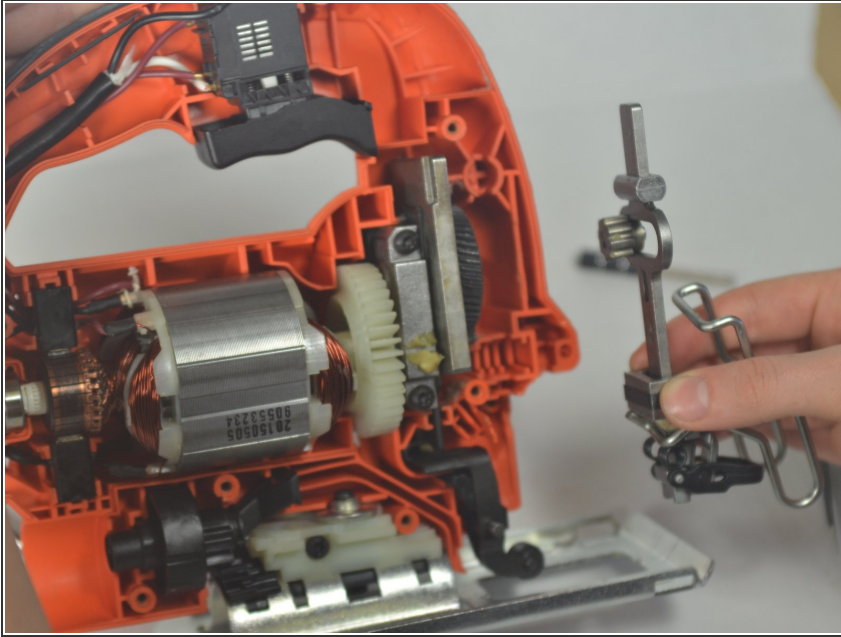
- Remove the nine torx 15.875mm screws on the front of the jigsaw using a T-15 torx screwdriver.

Step 2



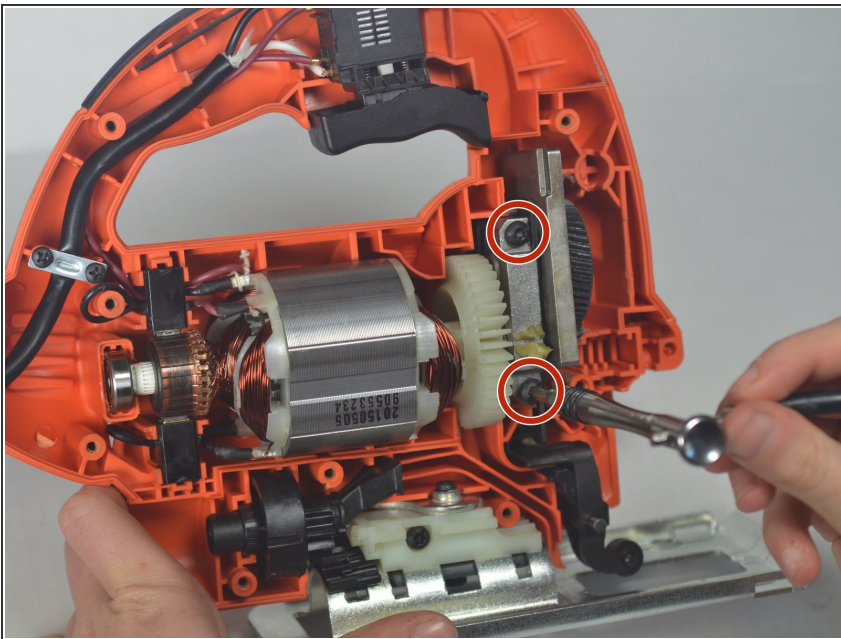
- By separating the two housing halves, carefully remove the top plate.

Step 3 — Blade Holder



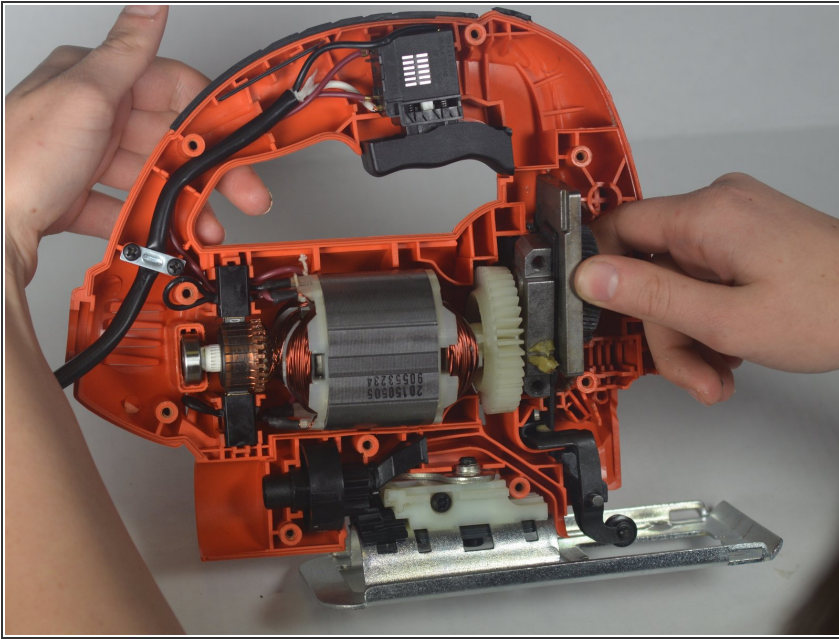
- Being careful to keep all parts together, grab the entire assembly and pull it directly out of the saw.

Step 4 — Motor



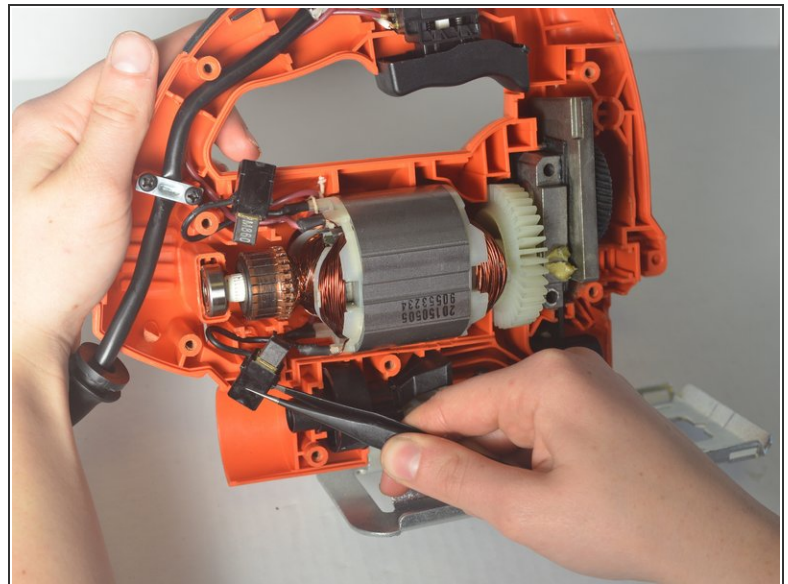
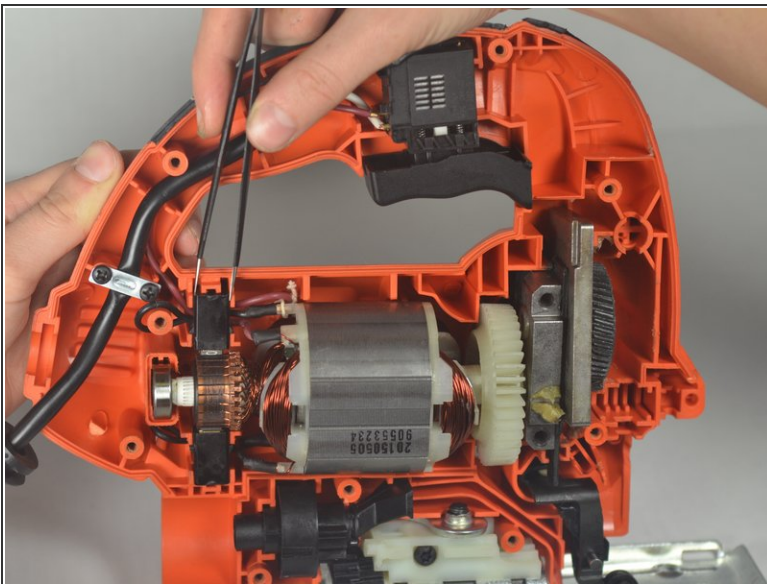
- Remove the two 30.1625mm screws with a T20 torx screwdriver that are holding the gearbox to the housing.

Step 5



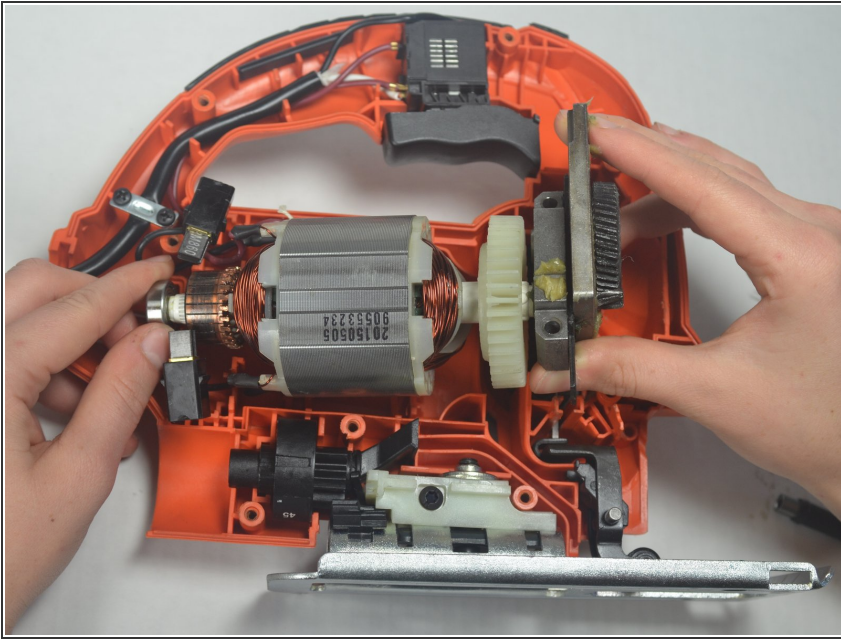
- Apply a light force to separate the gearbox from the housing. This will momentarily separate the gearbox and help with the removal of the system in later steps.

Step 6



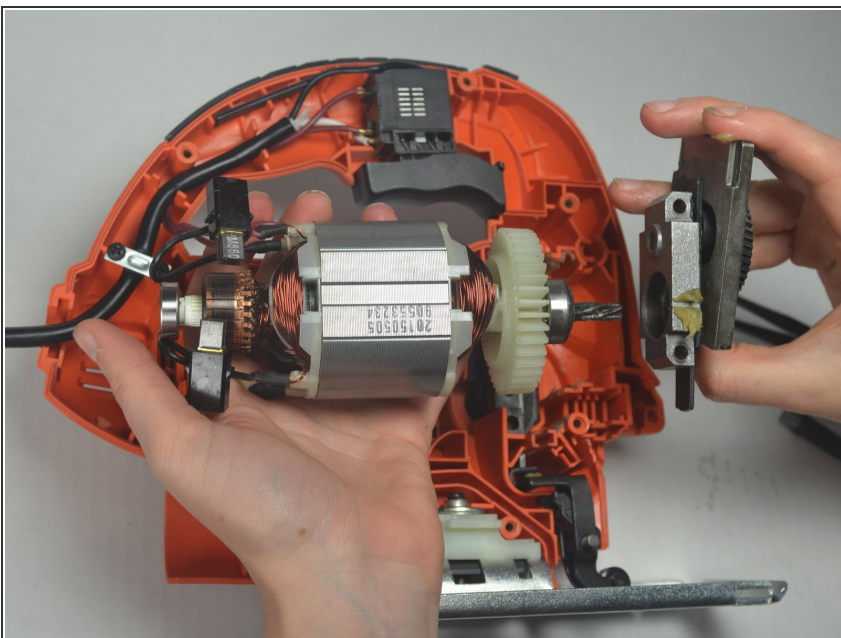
- Using tweezers or a small flathead screwdriver, gently remove each of the black magnetic clasps away from the motor.

Step 7



- Holding the gearbox and the bearing, pull the whole motor and gearbox out of the housing.

Step 8



- While holding the motor in one hand, gently pull the gearbox off of the drive shaft.

To reassemble your device, follow these instructions in reverse order. Be careful to line up the gearbox before replacement. The corkscrew end of the motor should be fed through each layer of the gearbox.

