



# Samsung Radiant 360 R1 Speaker Replacement

How to replace Radiant 360 R1 speaker/tweeter.

Written By: Angelo Espinosa



## INTRODUCTION

A tweeter speaker its the speaker that drives the highest range of frequency in the speaker. This guide will serve as a reference to replace the speaker/tweeter in the Samsung Radiant 360 R1 in the case that it becomes damaged.



### TOOLS:

- [Phillips #1 Screwdriver](#) (1)
  - [iFixit Opening Tools](#) (1)
-

- Use the plastic opening tool to lift and remove the rubber grommet plugs.

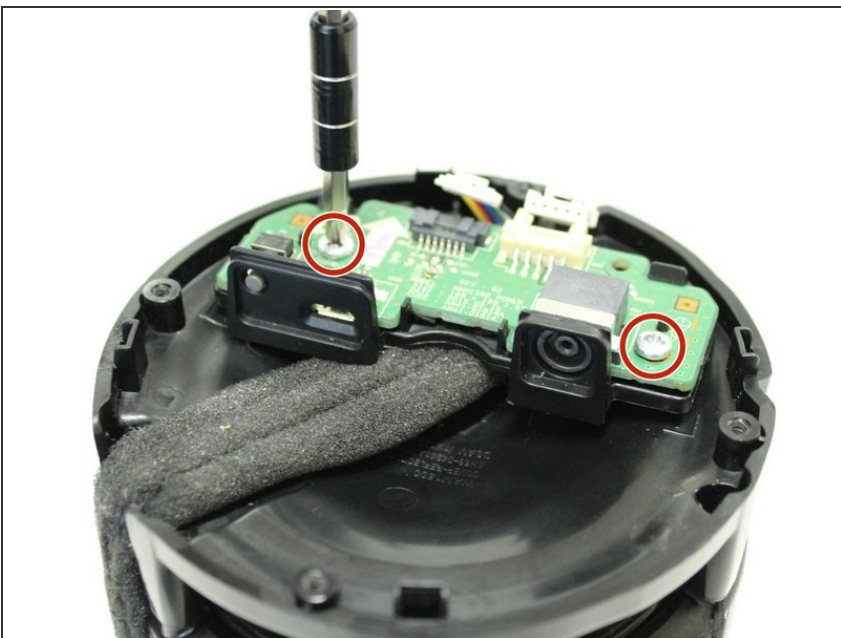
- Using a PH1 Philips screwdriver, remove four (9.5mm x 1.6mm) screws from the base plate.
- Remove base plate by stabilizing speaker and using plastic prying tool to pry the base plate from the speaker.

### Step 3



- Place the speaker on the table with the Touch Pad facing down. This will leave you with the Port Panel exposed.
- Remove speaker grill by stabilizing speaker on a table and applying pressure to the bottom of the speaker. Slide the speaker grill up and away from the remaining endcap.

### Step 4



- Remove the two exposed (9.5mm x 1.6mm) PH1 Phillips screws on the Port Panel.
- Remove the Port Panel from the speaker body, exposing the ribbon cables.



## Step 5



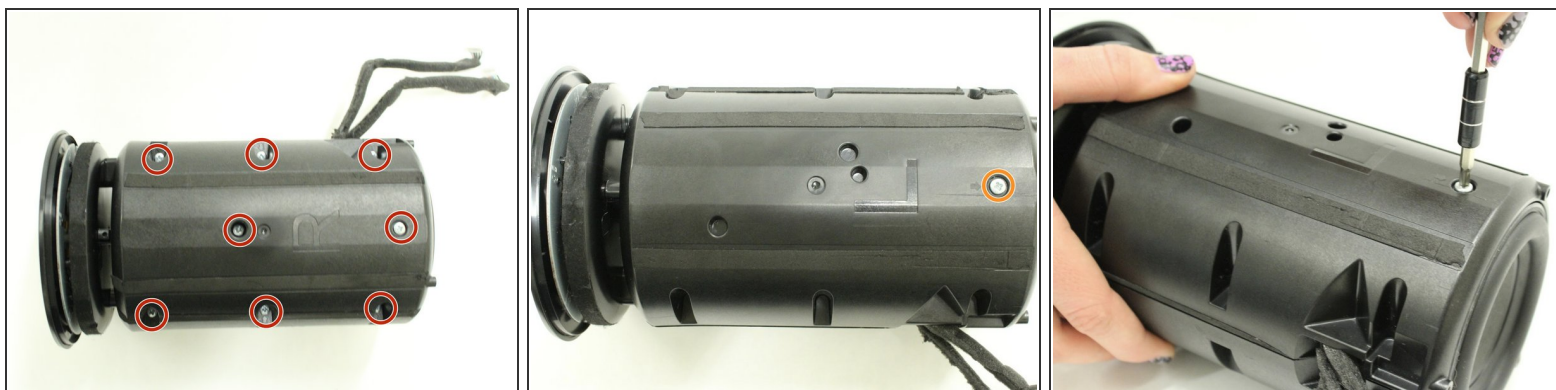
- While stabilizing the Port Panel remove the two ribbon cables one at a time by pressing the locking clip down on the ribbon cable connectors and pulling the connector away from the Port Panel.

## Step 6 — 1" Tweeter Speaker



- Remove the four (9.5mm x 1.6mm) PH1 Phillips screws on the port speaker body.
- Remove the Port Panel exposing the subwoofer.

## Step 7



- Remove the eight (9.5mm x 1.6mm) PH1 Phillips screws on the right side of the speaker body.
  - Remove the one (9.5mm x 1.6mm) PH1 Phillips screw on the left side of the speaker body.
- i** The body sides are denoted with a "R" and an "L" for right and left sides.

## Step 8



- Open up the body to expose the inner panel and motherboard.

## Step 9



- Remove the ribbon cable from the tweeter which is attached to the main motherboard.
- Slide the tweeter out of the enclosure.

To reassemble your device, follow these instructions in reverse order.