



# Lenovo IdeaPad 300-17ISK Hard Drive Replacement

The hard drive can become faulty if you drop...

Written By: Ammar Dodin



# INTRODUCTION

The hard drive can become faulty if you drop the laptop while it's running, or if it's placed under an excessive amount of stress. If the laptop doesn't boot or indicates hard disk read errors, follow this guide to replace it.

The battery for this device is not easily accessible and cannot be easily removed. Before you begin your replacement, be sure to disconnect the laptop from any power source. Additionally, we recommend that you drain the battery completely before you begin this replacement.



## TOOLS:

[Phillips #1 Screwdriver](#) (1)  
[Heavy-Duty Spudger](#) (1)



## PARTS:

[Crucial MX500 1 TB SSD](#) (1)  
[Crucial MX500 250 GB SSD](#) (1)  
[Crucial MX500 500 GB SSD](#) (1)  
[2 TB SSD](#) (1)  
[5H20J35762 - Lenovo Laptop Hard Drive - Genuine](#) (1)

---

## Step 1 — Bottom Back Cover



- Unscrew the two 7mm Phillips #1 screws that hold the bottom back plate in its place.



## Step 2



- Place your hands at the bottom of the cover and slide it towards you.
- Lift the cover up to remove it.

## Step 3 — Hard Drive



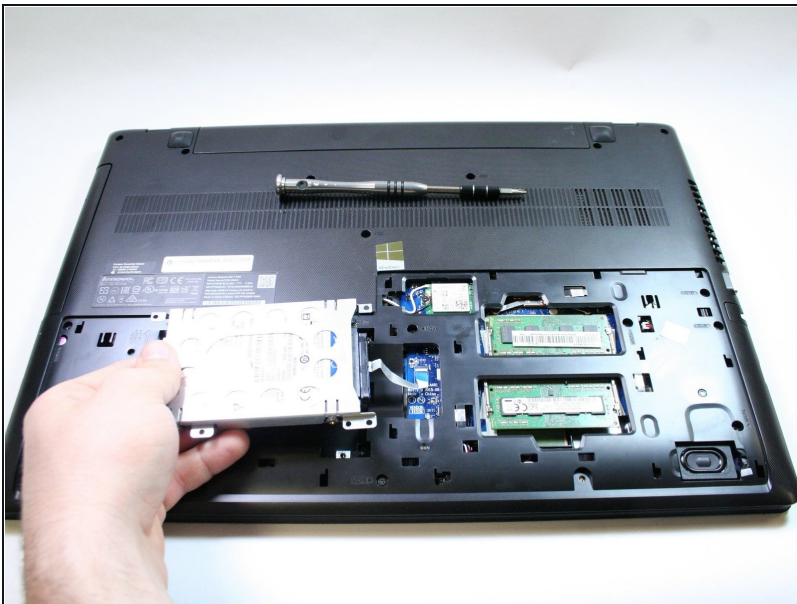
- The hard drive is located at the bottom of the laptop.

## Step 4



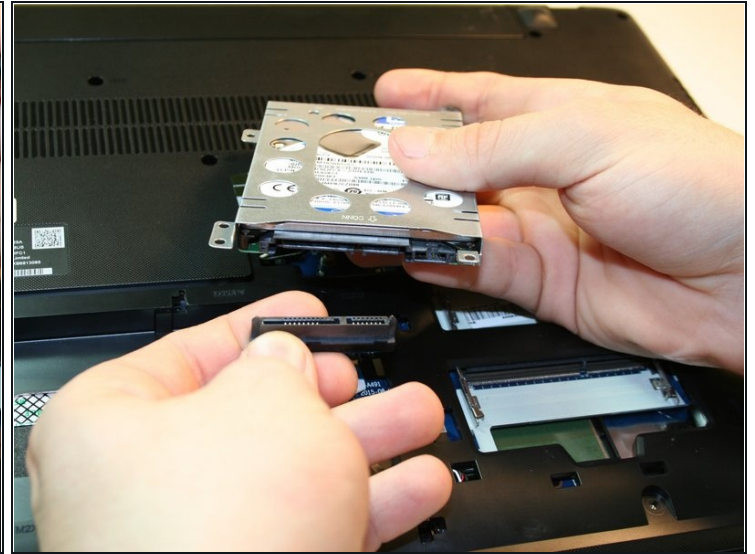
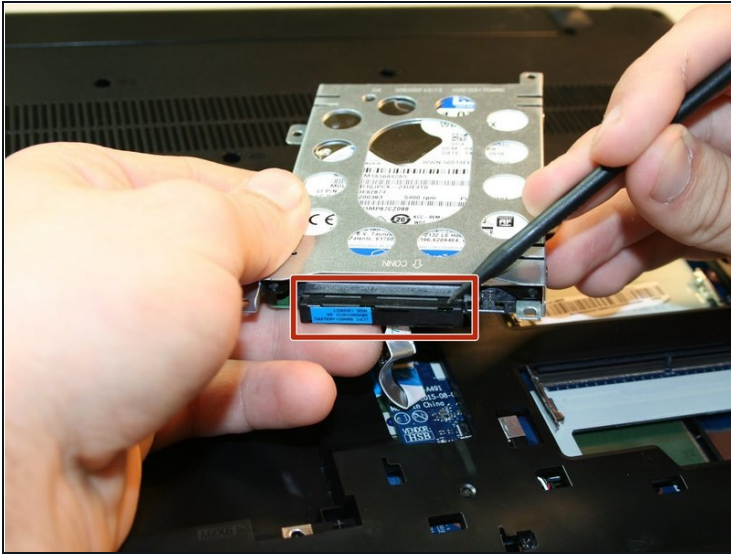
- Unscrew the four 6mm Phillips #1 screws that hold the hard drive frame in place.

## Step 5



- Gently pick up the hard drive without pulling it completely out.
- ⚠ You shouldn't use excessive force because the hard drive is still attached to the motherboard.

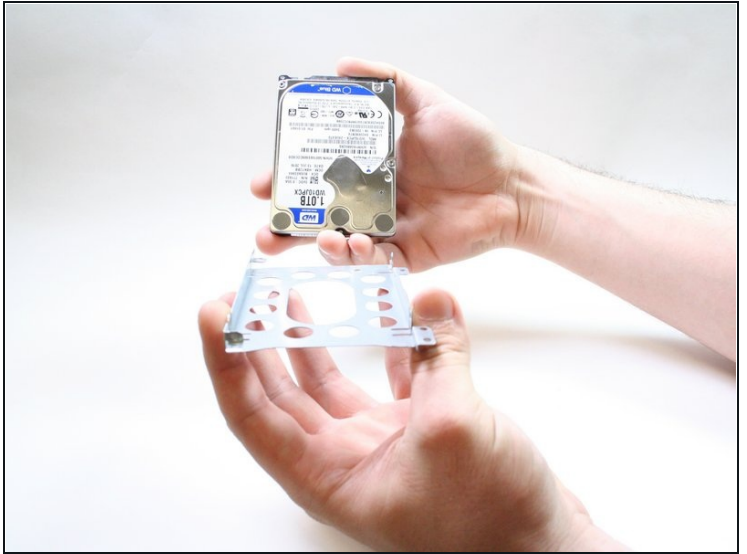
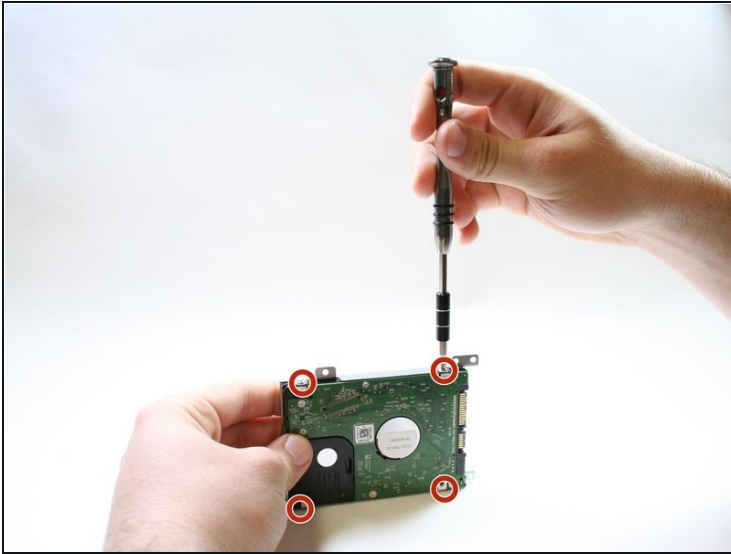
## Step 6



- Use the spudger to disconnect the hard drive from its motherboard connector.
- ① The connector should come right off without excessive force.



## Step 7



- Remove the four 3mm Phillips #1 screws, two on each side, that secure the hard drive in its protective frame.
- ⚠ These screws are different from the rest of the laptop screws. You can damage the drive using the wrong screws.
- Lift the frame to separate it from the hard drive.

---

To reassemble your device, follow these instructions in reverse order.