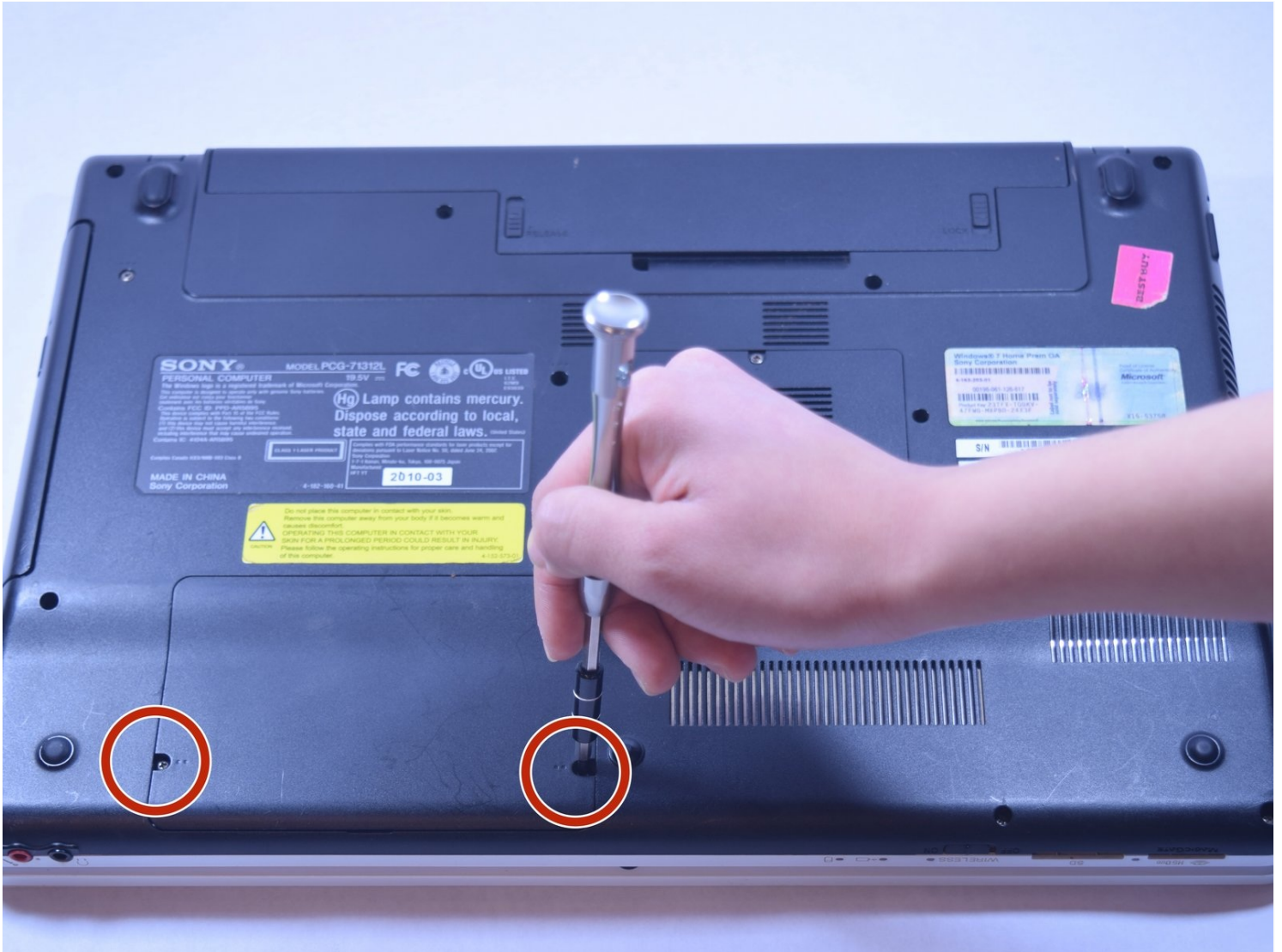




# Sony Vaio VPCEB11FM Hard Drive Replacement

Written By: Maxine Filcher



## TOOLS:

Phillips #1 Screwdriver (1)

## PARTS:

1 TB SSD (1)


250 GB SSD (1)

Crucial MX500 500 GB SSD (1)

2 TB SSD (1)

### Step 1 — Battery



 Power down and disconnect the laptop from power supply.

- Using your fingers, unlock the tab by pushing on the slide.

### Step 2



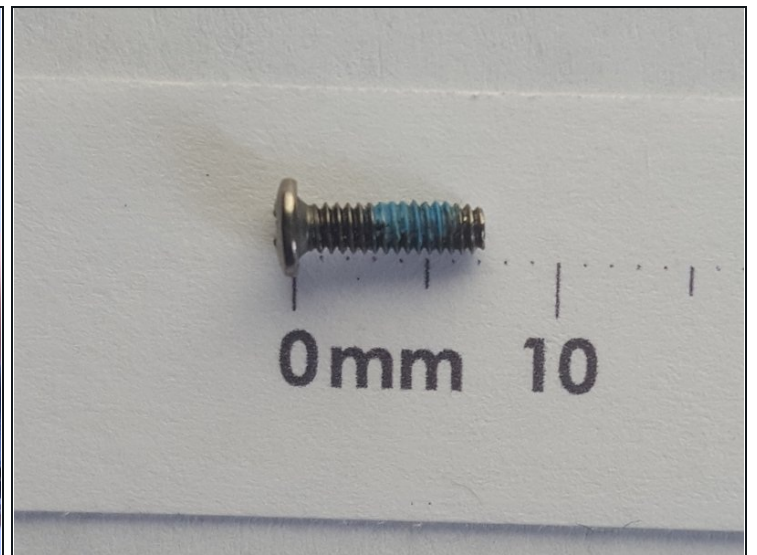
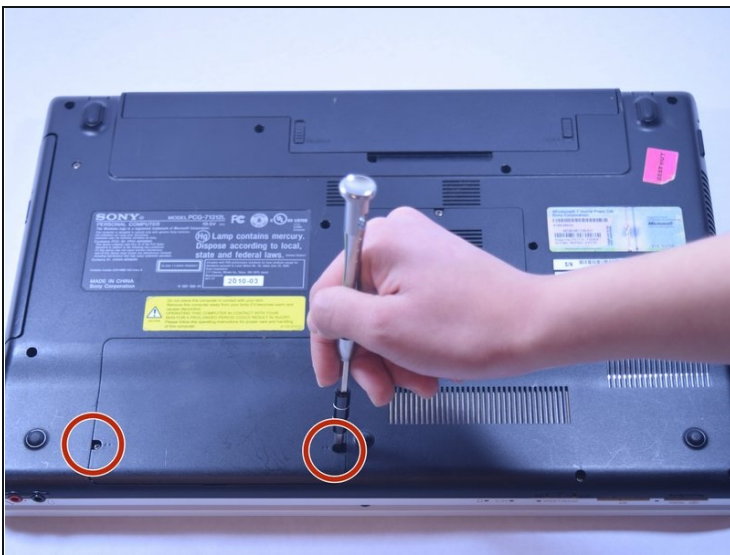
- While holding the release slide, use your thumb to lift the lip of the battery to pull it out.

### Step 3



- Pull the battery out.

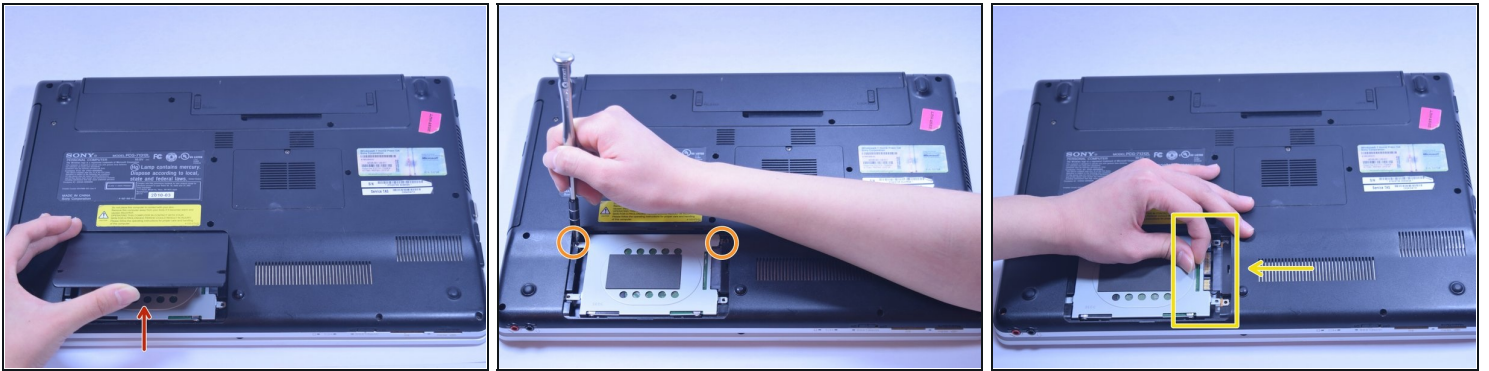
### Step 4 — Hard Drive



- Using the Phillips #01 Screwdriver, remove the two 7mm screws.

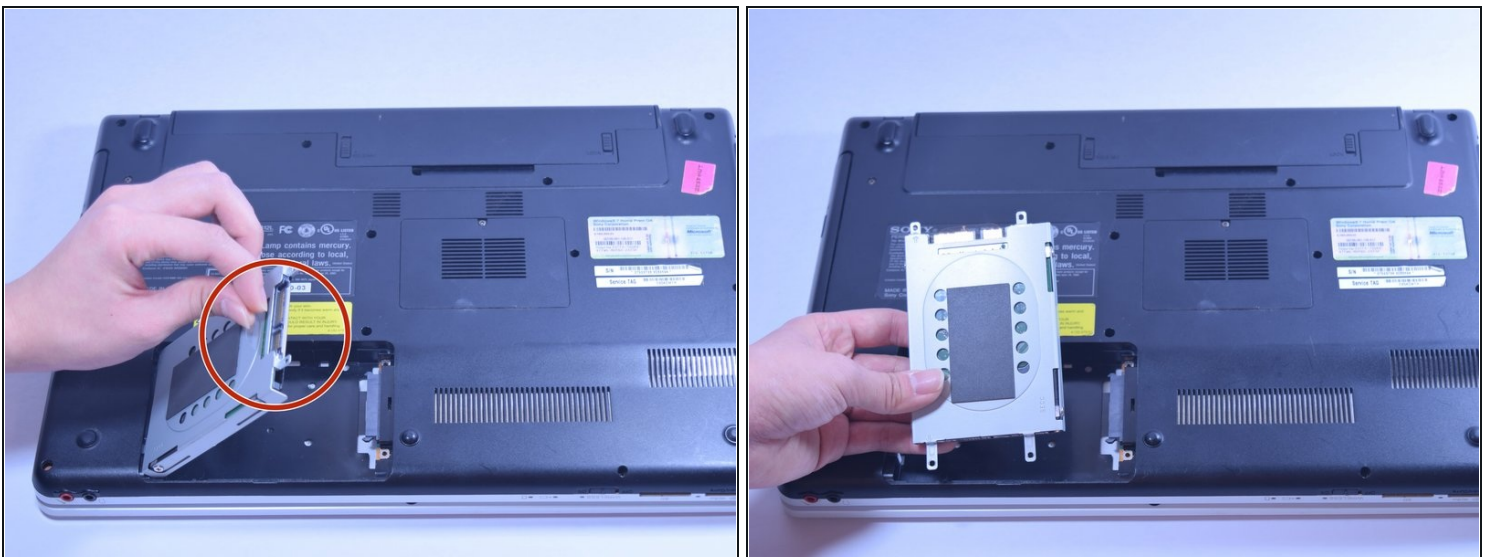


## Step 5



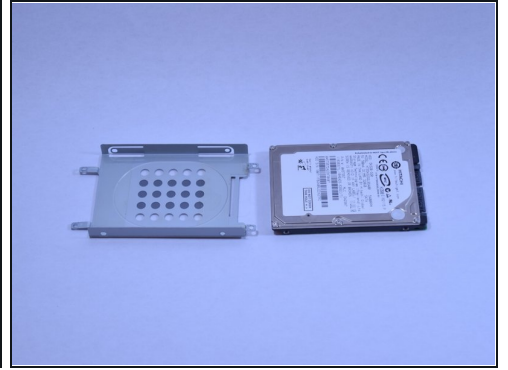
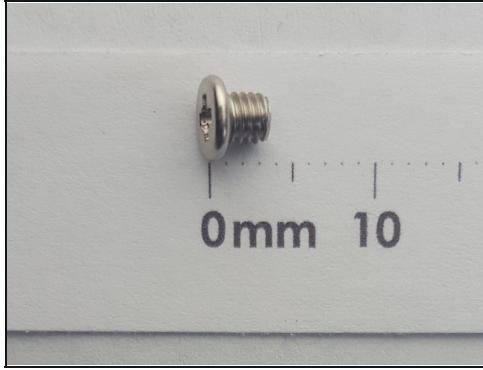
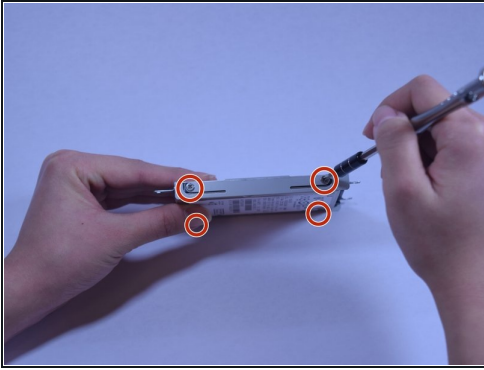
- Use your fingers to pry the cover upward.
- Unscrew the two 7mm screws.
- Pull the plastic tab in the direction of the arrow to take out.

## Step 6



- Lift plug side first.
- Remove all the way.

## Step 7



ⓘ Skip to next step if accessing other components.

- Remove the 3mm screws with the Phillips #1 Screwdriver from hard drive bracket.

---

To reassemble your device, follow these instructions in reverse order.