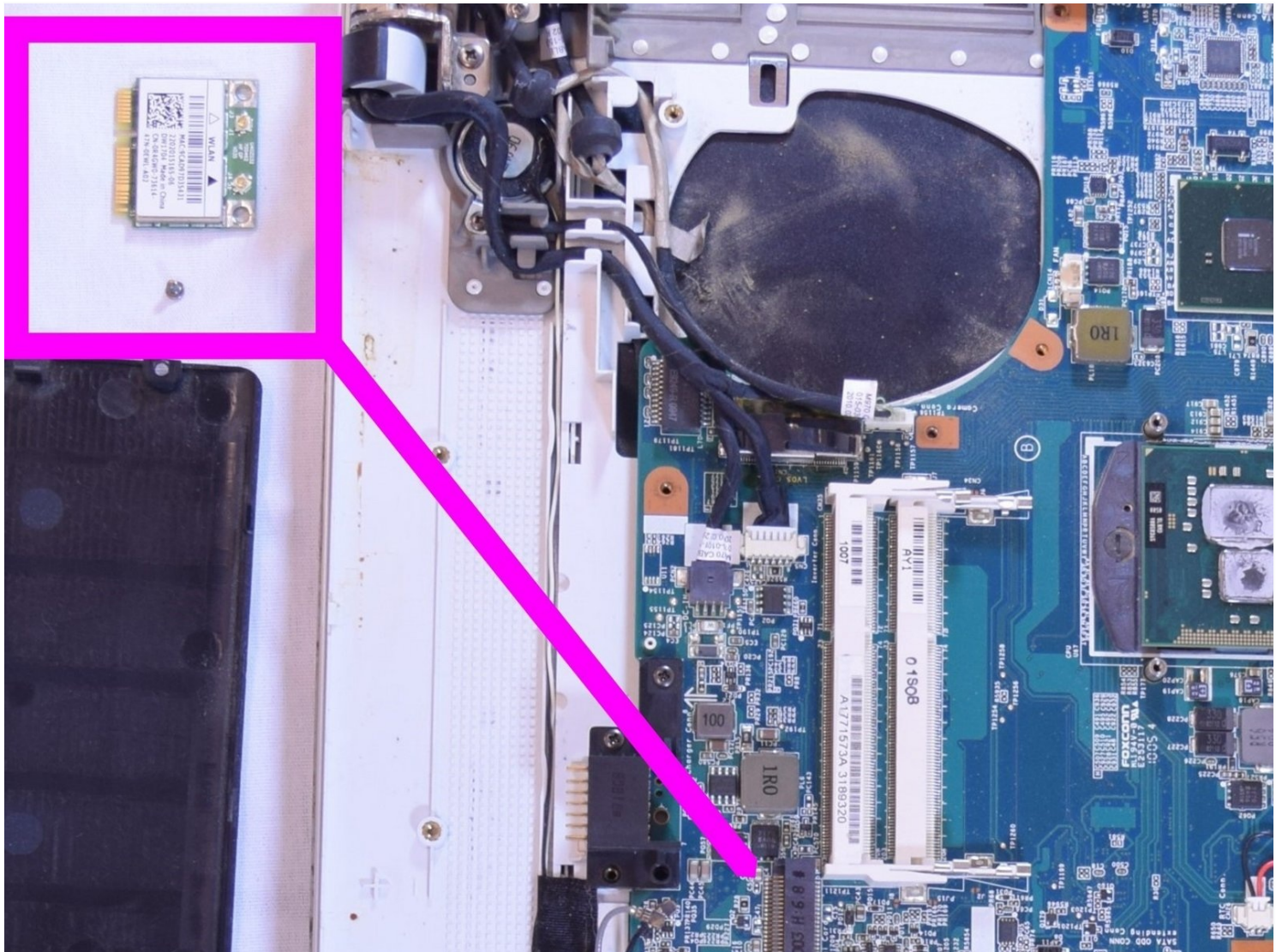




Sony Vaio VPCEB11FM Wifi Card Replacement

This guide is used to replace the Sony Vaio...

Written By: Maxine Filcher



INTRODUCTION

This guide is used to replace the Sony Vaio VPCEB11FM Wi-Fi Card. This repair might be needed when the laptop no longer connects to the internet via Wi-Fi due to the faulty card. This repair would resolve the problem of not being able to connect to the internet via Wi-Fi. There are no special skills and there is nothing unusual about this repair.


TOOLS:

Phillips #000 Screwdriver (1)

Phillips #1 Screwdriver (1)

Step 1 — Battery



 Power down and disconnect the laptop from power supply.

- Using your fingers, unlock the tab by pushing on the slide.

Step 2



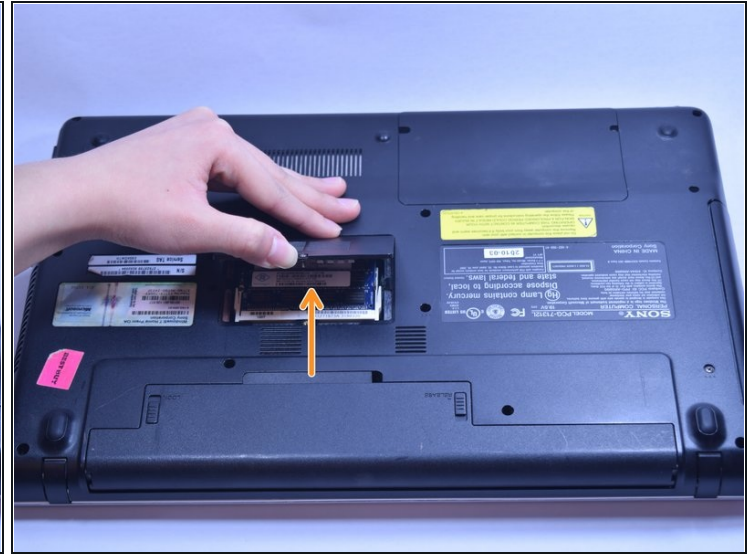
- While holding the release slide, use your thumb to lift the lip of the battery to pull it out.

Step 3



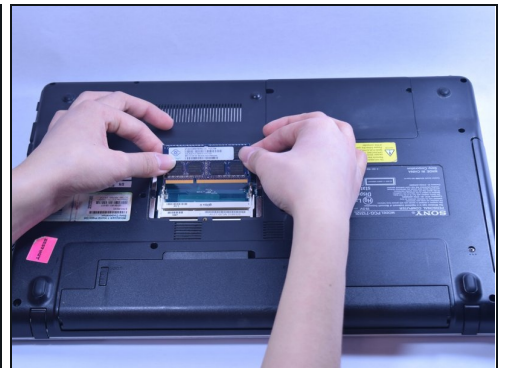
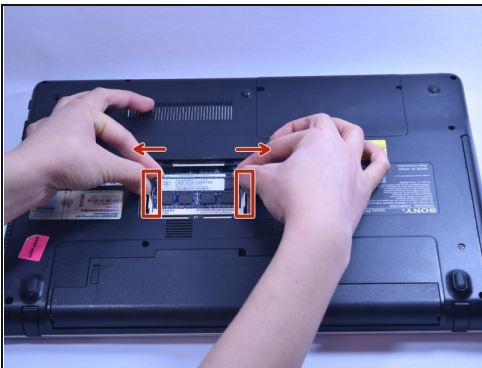
- Pull the battery out.

Step 4 — RAM



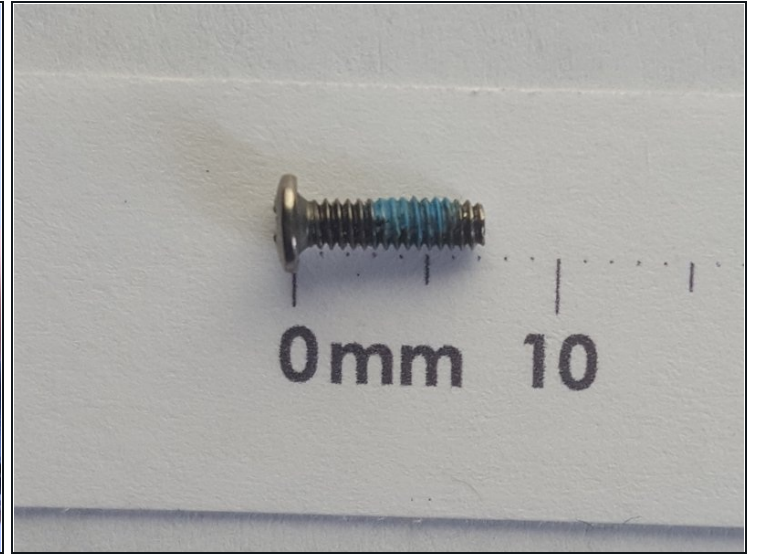
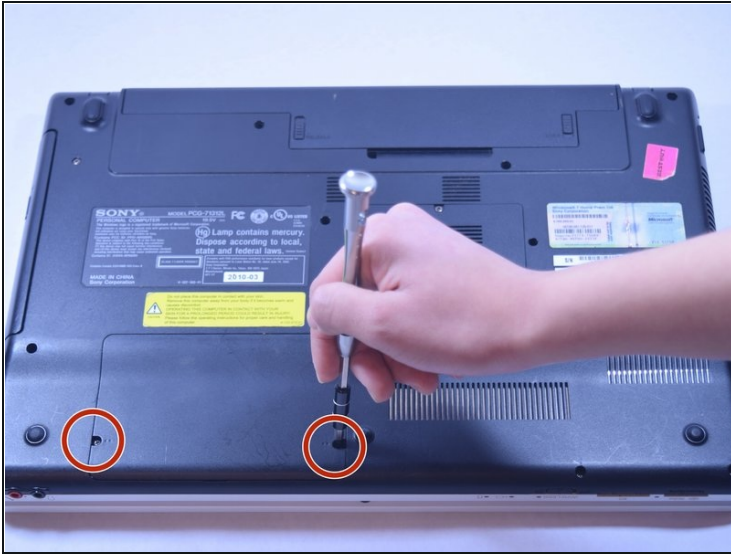
- Unscrew the RAM cover plate using the Phillips #1 Screwdriver.
- Once the cover has been loosened, pry the cover with your finger for it to come off.

Step 5



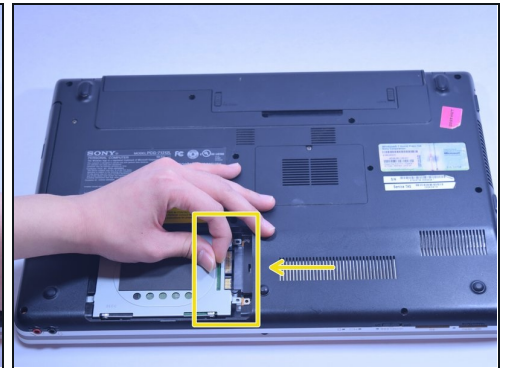
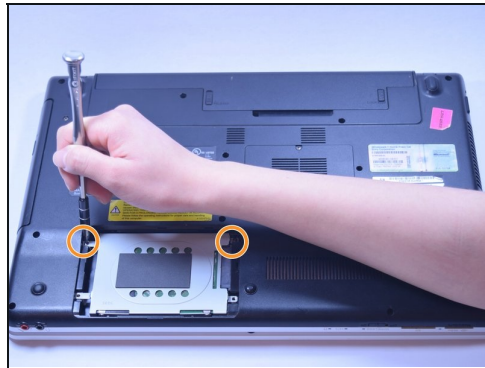
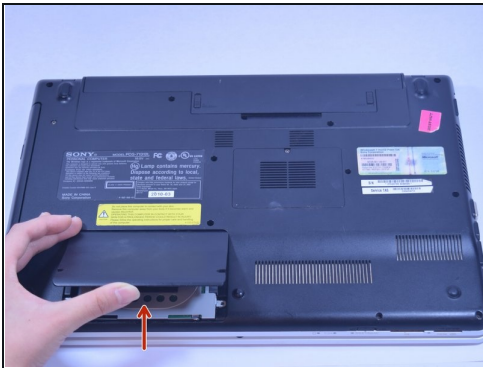
- Use your fingers to gently pull the white plastic strip outward on both sides.
- Once you pull the strip, the strip of RAM will loosen up. Once loose the strip of RAM should lift out.
- Once done with the top strip of RAM continue for all continuous strips.

Step 6 — Hard Drive



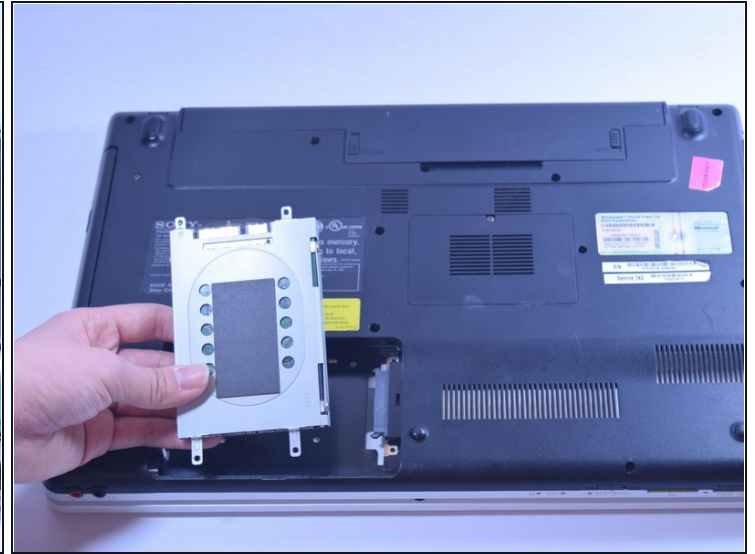
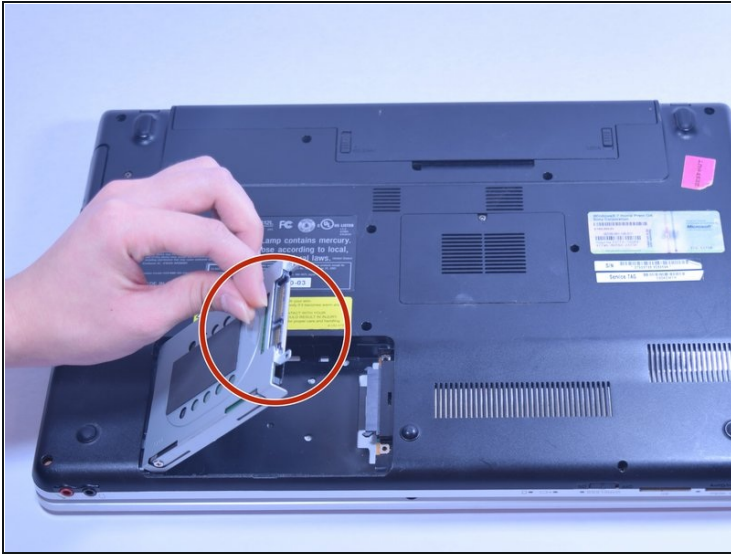
- Using the Phillips #01 Screwdriver, remove the two 7mm screws.

Step 7



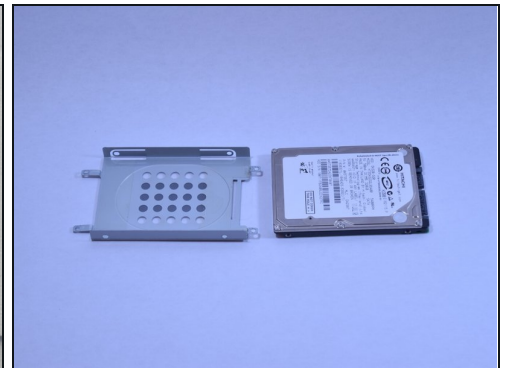
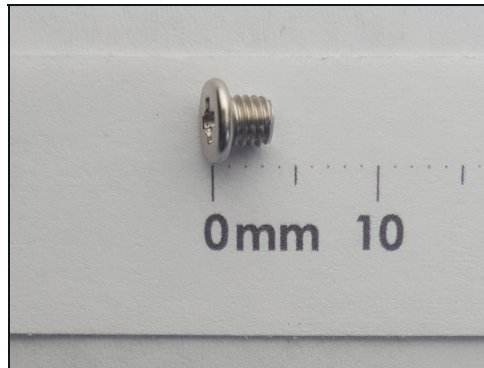
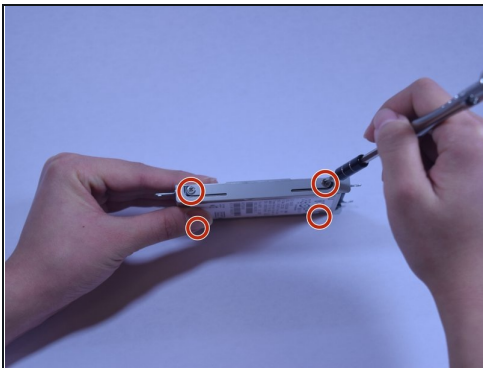
- Use your fingers to pry the cover upward.
- Unscrew the two 7mm screws.
- Pull the plastic tab in the direction of the arrow to take out.

Step 8



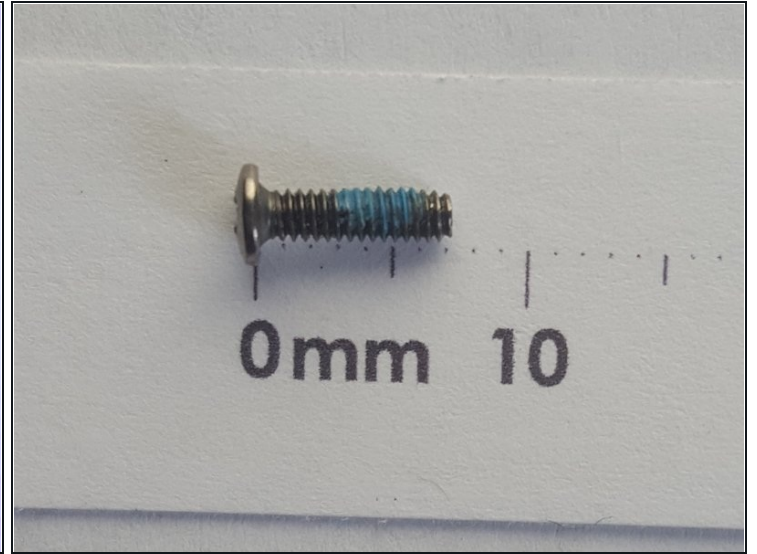
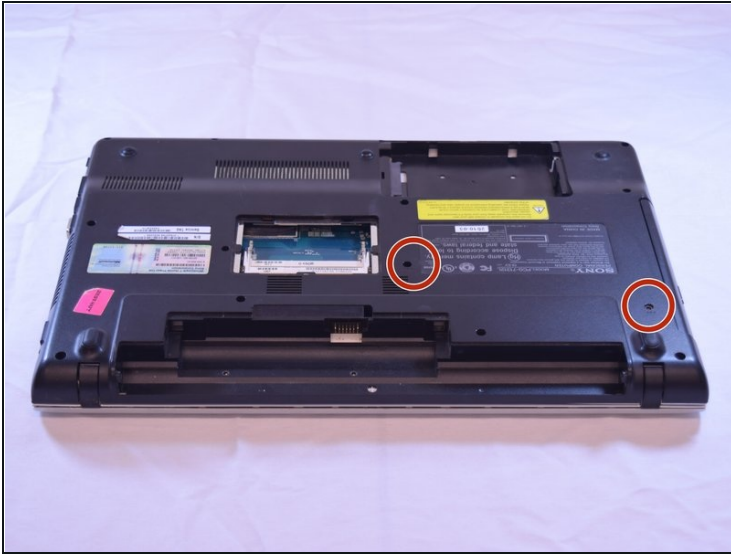
- Lift plug side first.
- Remove all the way.

Step 9



- ① Skip to next step if accessing other components.
- Remove the 3mm screws with the Phillips #1 Screwdriver from hard drive bracket.

Step 10 — DVD Drive



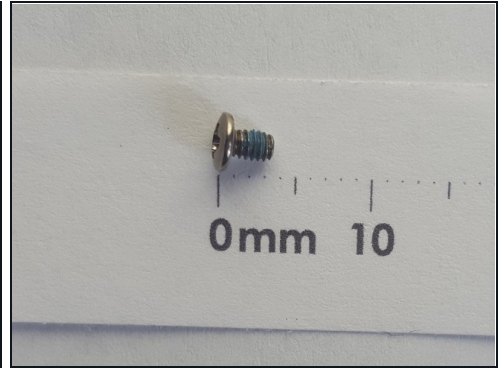
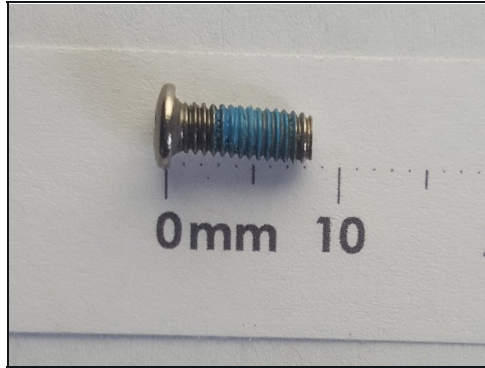
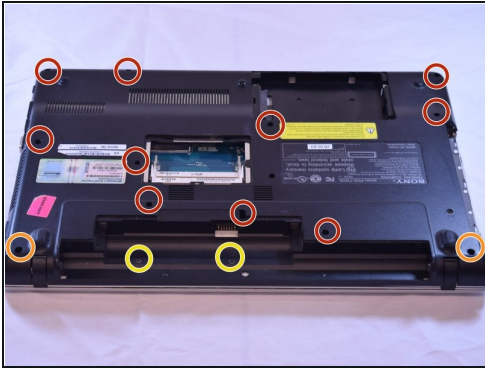
- Remove the 7mm screws with the Phillips #1 Screwdriver.

Step 11



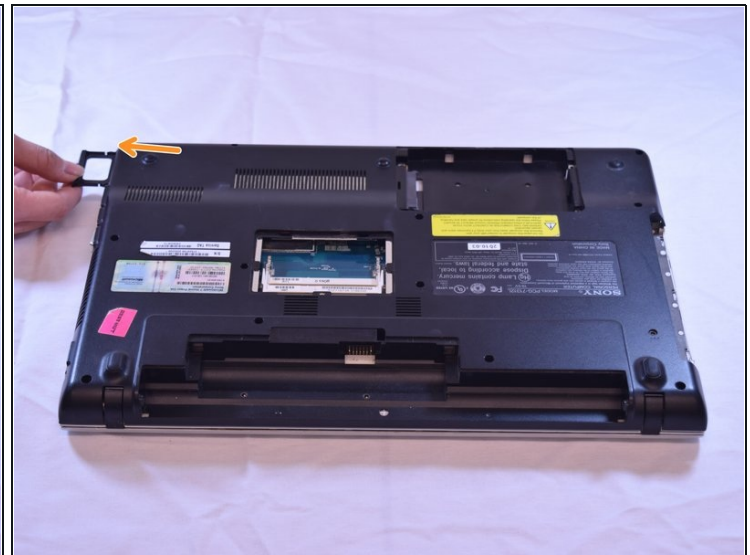
- Grasp the DVD drive's face plate with your fingers and pull out.

Step 12 — Cooling Fan



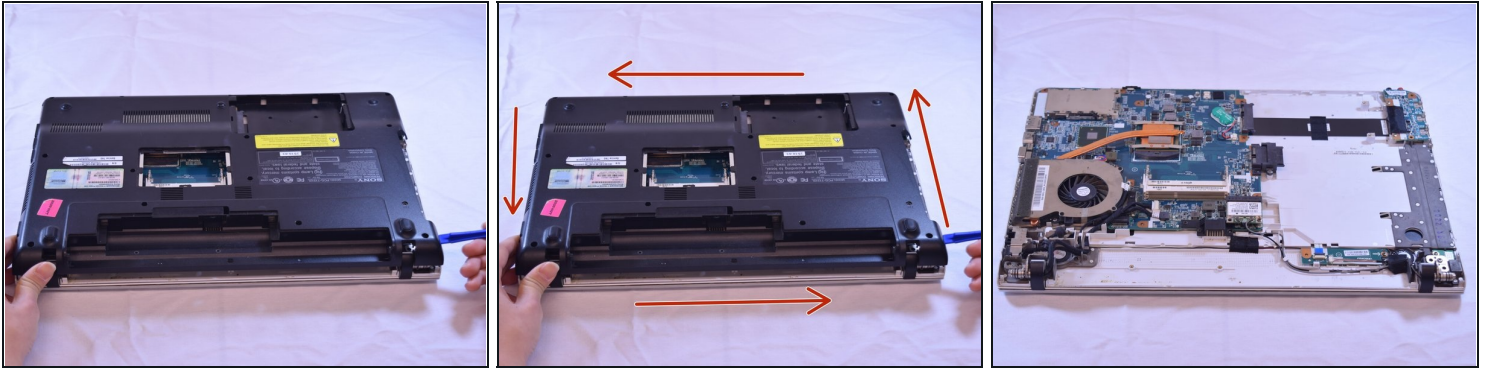
- Remove ten 7mm screws with the Phillips #1 Screwdriver.
- Remove two 8mm screws with the Phillips #1 Screwdriver.
- Remove two 3mm screws with the Phillips #1 Screwdriver.

Step 13



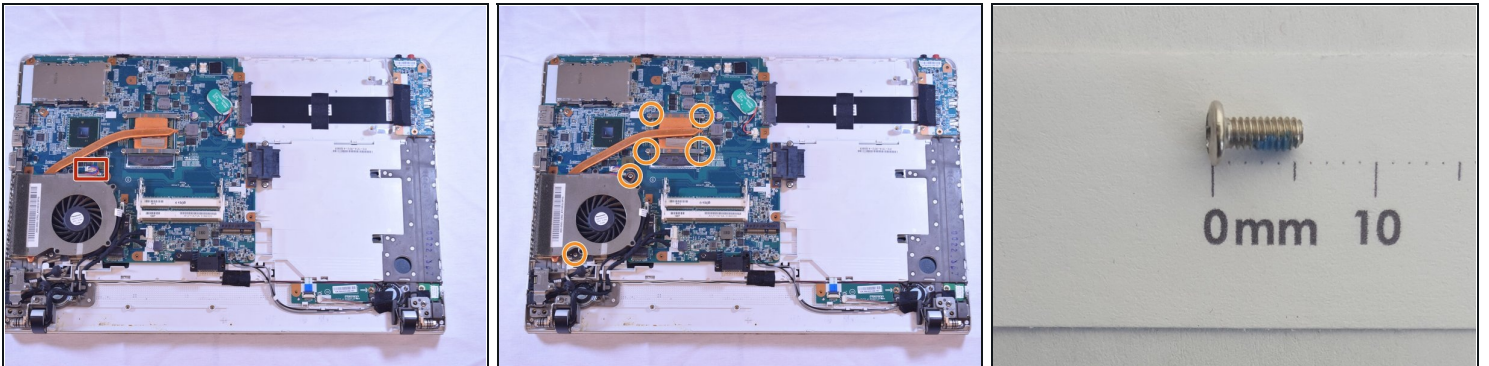
- Remove SD card slot block by pushing it in until it releases.
- Once released pull out to remove.

Step 14



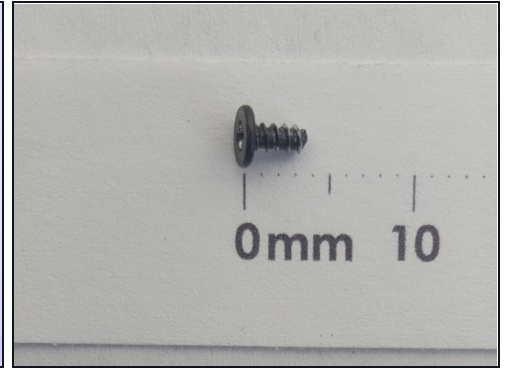
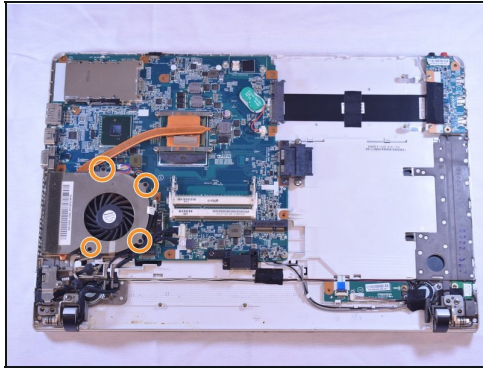
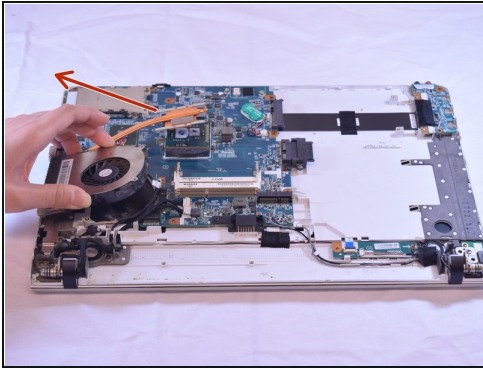
- To take off the cover plate, start by finding a loose corner to begin prying it open.
 - Work the tool around the sides to release the cover. You may need a second tool to help keep your loose corner open.
 - Lift cover away.
- ⓘ NOTE: If you are attempting to access other components, skip 2 steps.

Step 15



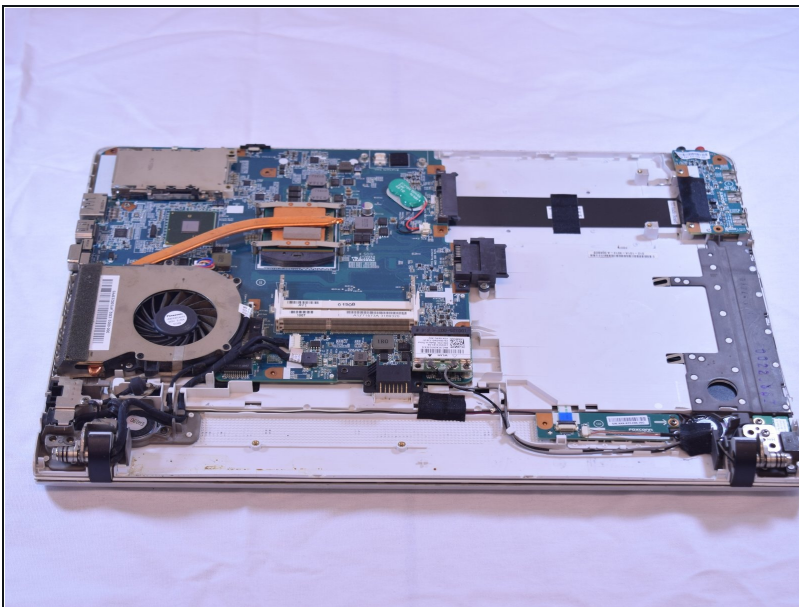
- Remove the plug shown using a pry tool.
- Remove seven 5mm screws with the Phillips #01 Screwdriver.

Step 16



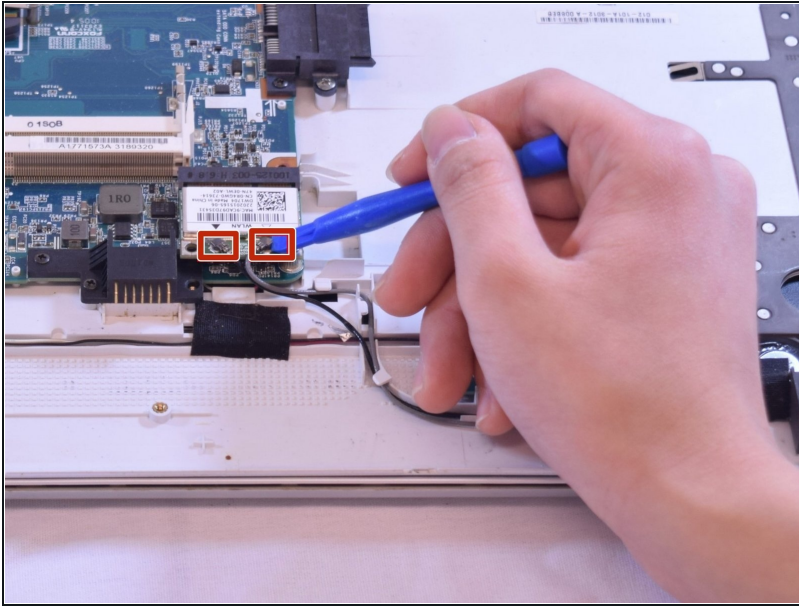
- To break the thermal paste, apply gentle constant upward force until it comes free.
- Remove four 3.5mm screws with the Phillips #000 Screwdriver to access cooling fan.

Step 17 — Wifi Card



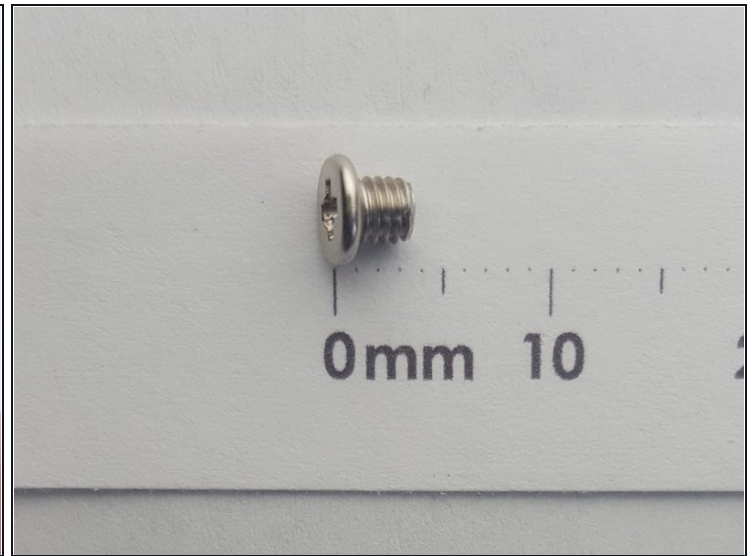
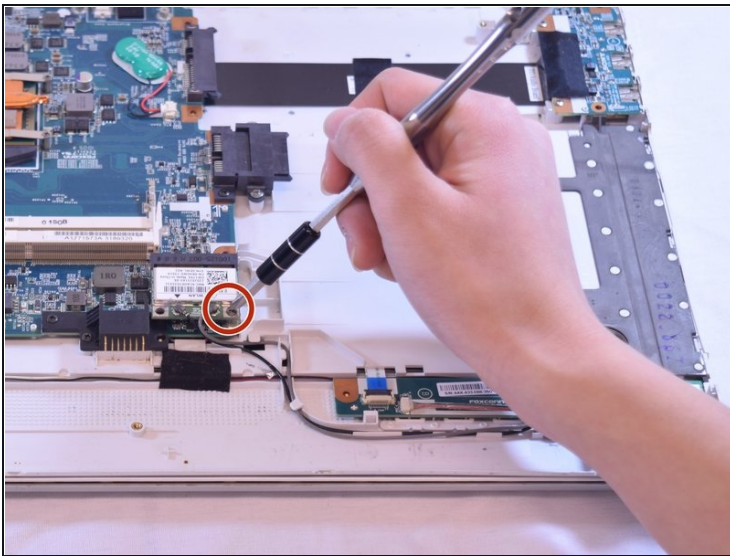
☒ Continuing from Step 3.

Step 18



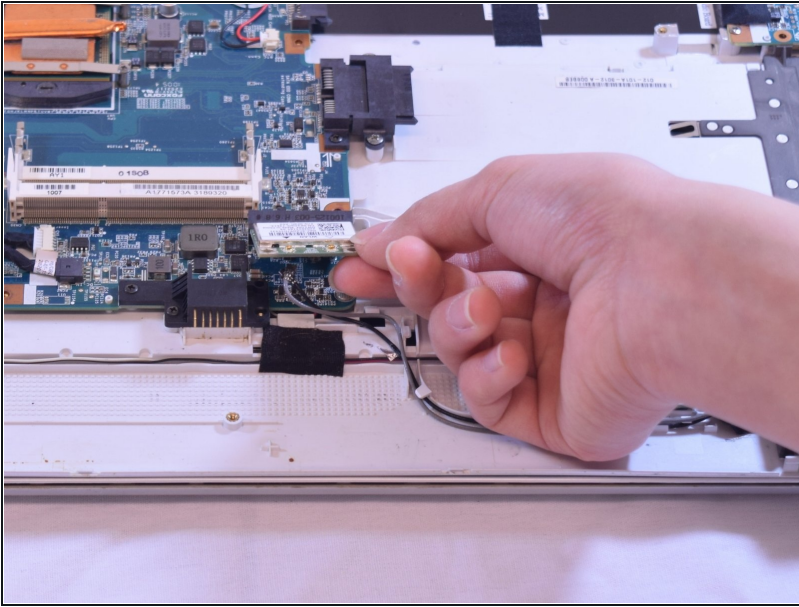
- Carefully remove the antenna plugs.

Step 19



- Remove the 3mm screw with the Phillips #01 Screwdriver

Step 20



- Remove the Wifi Card.

To reassemble your device, follow these instructions in reverse order.