



Asus X502C-RB01 Keyboard Panel Removal

Prerequisite Only

Written By: Jaspal Chauhan



INTRODUCTION

This guide will show you how to remove the keyboard panel in order to access the internal parts of the laptop.

TOOLS:

- [Phillips #0 Screwdriver](#) (1)
 - [iFixit Opening Tools](#) (1)
- Prying Tool
- [Spudger](#) (1)
-

Step 1 — Keyboard Panel



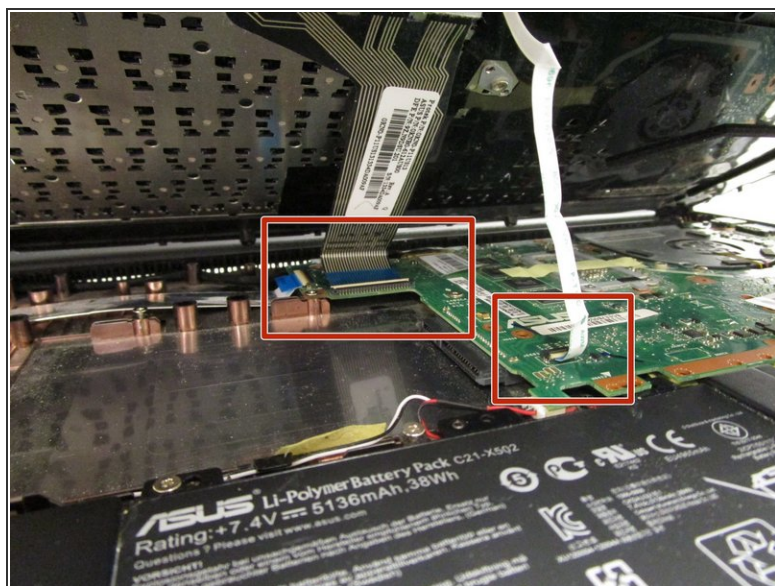
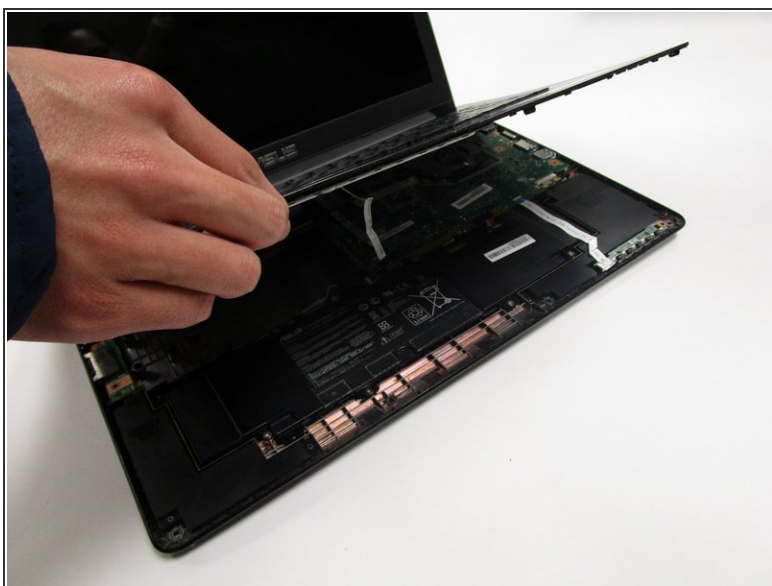
- Turn off the laptop and flip it face down.
- Using a Phillips #0 screwdriver, remove the seven 9mm screws circled in red.
- With the same screwdriver, remove the four 5mm screws circled in orange.

Step 2



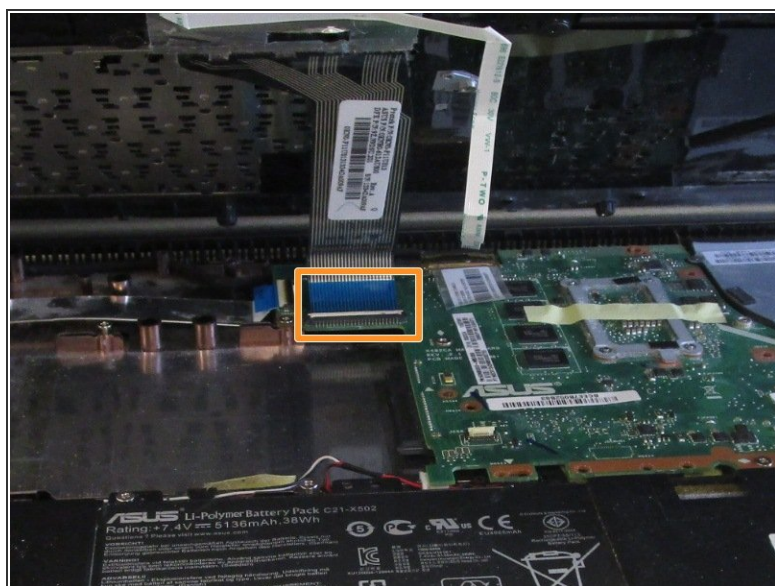
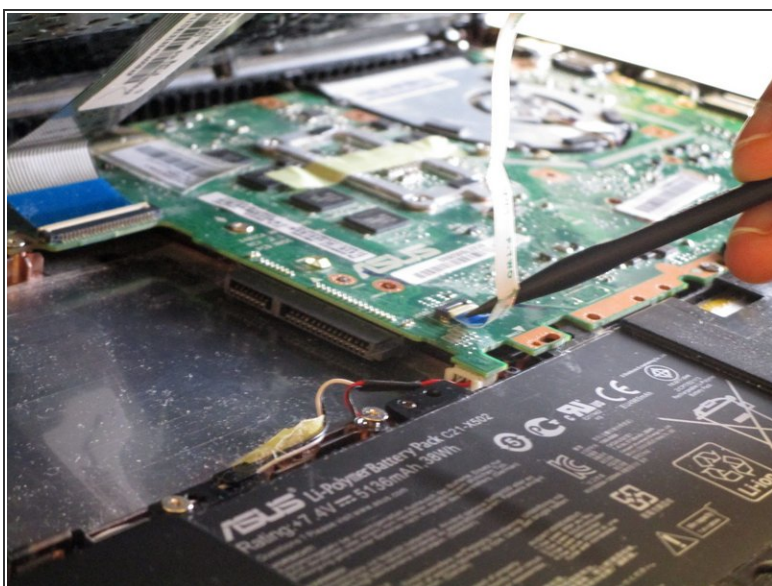
- Flip the laptop face up and open the lid.
 - Use the plastic opening tool to pry around the entire edge of the keyboard panel to loosen the panel from the base.
- ⚠ Be careful not to lift the panel just yet, as it is still connected to the motherboard.

Step 3



- Partially lift the panel up, revealing the two cables connected to the motherboard.

Step 4



- Disconnect the first ZIF cable by lifting the tab using the spudger tool or your fingernail and gently pull the cable out.
- Disconnect the second ZIF cable by lifting the tab using your fingernail and gently pull the cable out. This one is more difficult to reach with the spudger.

Step 5



- Remove the keyboard panel completely and set it aside. The internal components of the laptop are now exposed.

To reassemble your device, follow these instructions in reverse order.