



# Samsung Galaxy Tab 7.0 Sprint Front Panel Replacement

This guide will teach the reader how to replace the Front Panel for this device (Samsung Galaxy Tab 7.0 Sprint).

Written By: Peter Van Ausdeln



This document was generated on 2020-11-19 06:01:15 AM (MST).

## INTRODUCTION

Use this guide to replace the front panel of your device. This will require some disassembly of your device, and removal of the front panel is required for replacing any other part on the inside of your device.



### TOOLS:

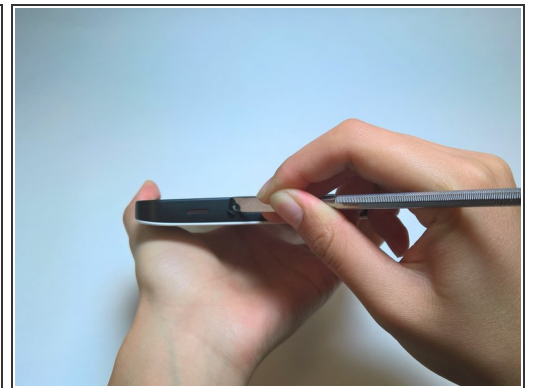
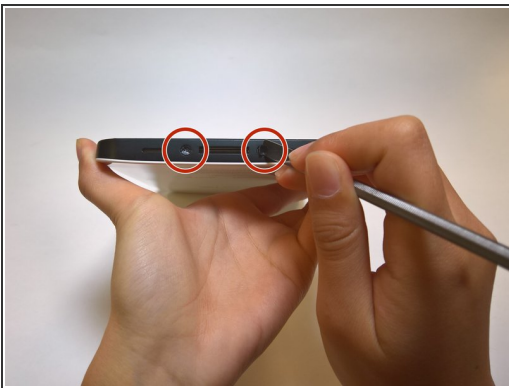
- [iFixit Opening Tools](#) (3)
  - [Tri-point Y0 Screwdriver](#) (1)
  - [Phillips #00 Screwdriver](#) (1)
  - [Metal Spudger](#) (1)
-

## Step 1 — Front Panel



- Fully power off the device.
- Disconnect and remove any cables that are connected to the device (i.e. chargers or headphones).
- Place the device on a flat, stable, and clean surface.

## Step 2



- Remove the plastic tabs on the bottom of the device using the metal spudger, as shown in the pictures.
- ☑ Make sure you have a place to store small parts like this where they are easily accessible but hard to lose.

## Step 3



- Using a Tri-Point YO Screwdriver, remove the two 4.1mm Tri-Wing screws.
- ☞ Place the removed screws in a location similar to where you placed the pads that you removed in the previous step.

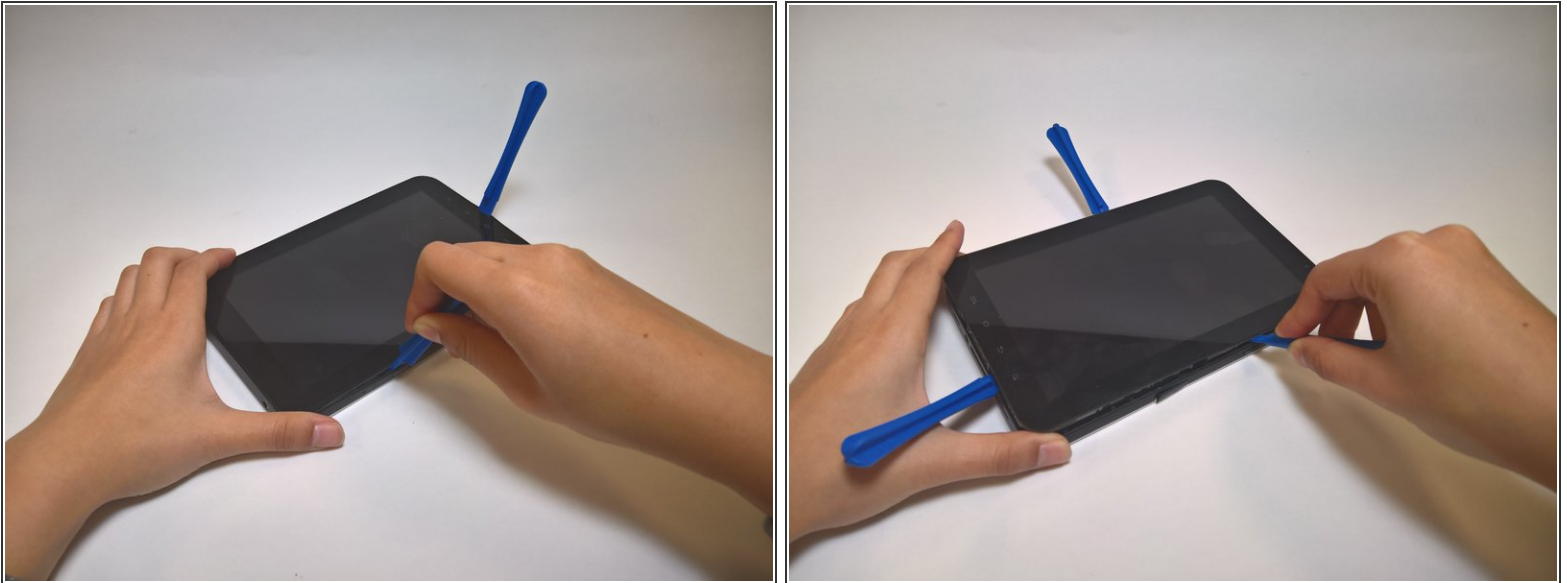
## Step 4



- Wedge a plastic opening tool between the front and back panel, on the bottom right corner.
  - Slowly push the tool down to make a small gap between the front panel and the back panel.
  - Holding the tool steady, run the tool along the bottom part of the device from right to left. This will make the gap between the front panel and the back panel bigger.
- ⚠ When wedging your tool into the device, make sure to apply the pressure to the screen and device at a slow but steady speed to the screen. Too much pressure too fast can crack the screen.

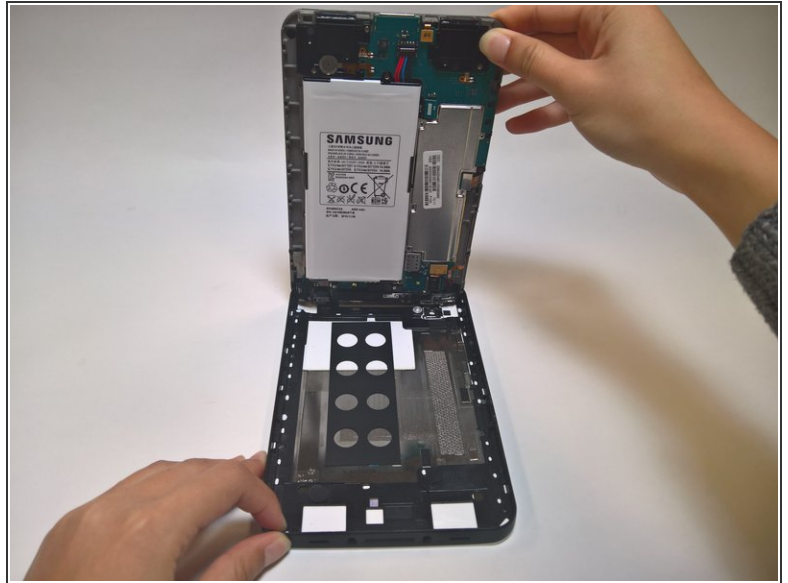


## Step 5



- Leave the previously used tool wedged in the device.
  - Insert another plastic opening tool into the bottom of the left side, as shown.
  - Using a similar procedure to the last step, run the tool along the side and widen the front panel-back panel gap. This time, run the device from bottom to top.
  - Repeat this process for the right side of the device, starting at the bottom of the right side.
- i** Some of the other tools that you wedged in may pop out. Simply wedge them back in where they were previously, and continue.

## Step 6



- Holding the bottom of the device, lift the front panel from the back panel.

⚠ Make sure to remove the front panel slowly, to ensure that you don't accidentally break anything.

To reassemble your device, follow these instructions in reverse order. Make sure that your front panel is securely attached to the rest of your device, and that all parts of the device are aligned properly.