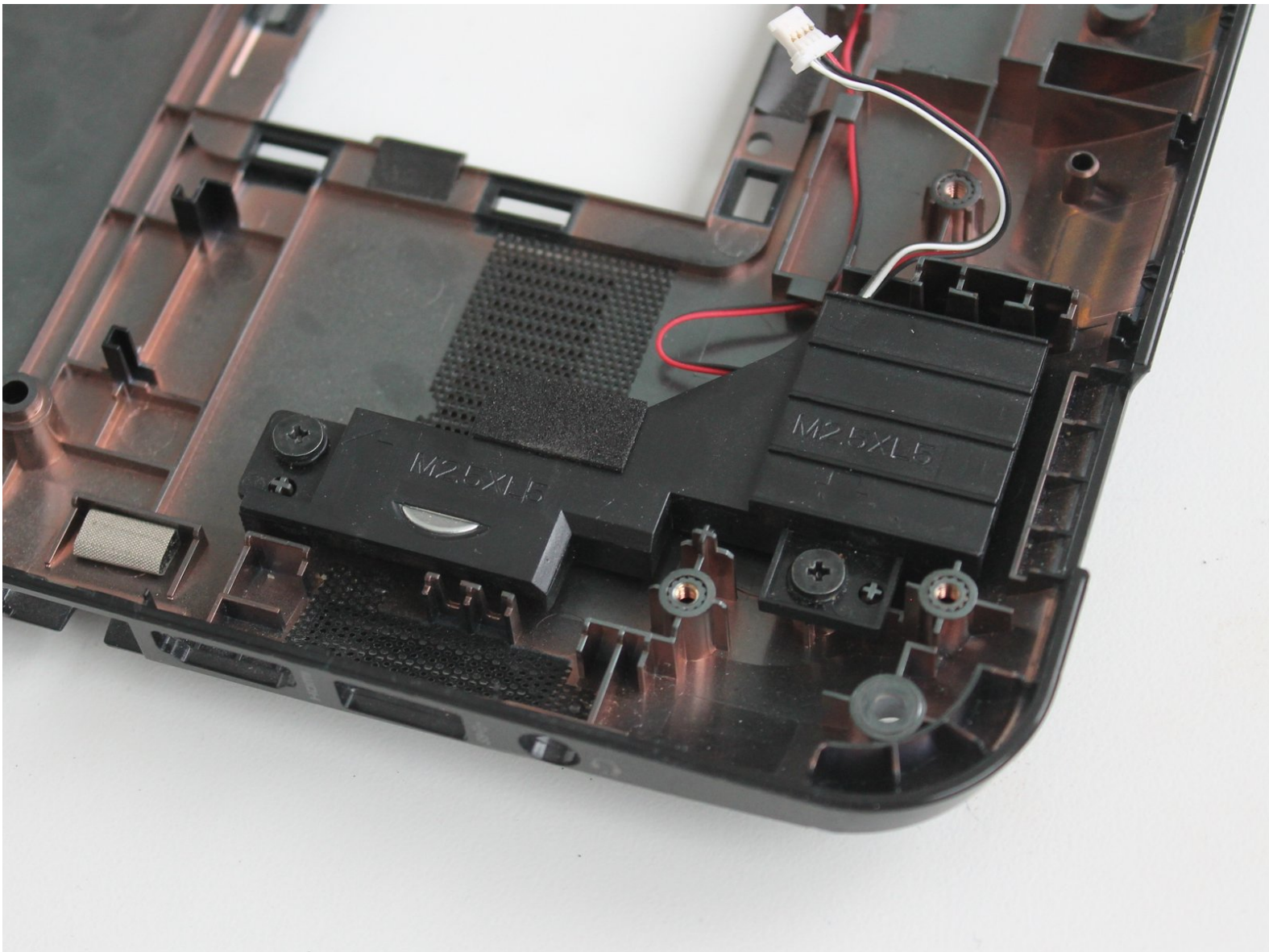




HP 15-d076nr Onboard Speakers Replacement

This guide details how to replace the onboard speakers on an HP 15-d076nr. If your laptop is not producing sound, this may be the guide for you.

Written By: Amy Weed



INTRODUCTION

This guide details how to replace the onboard speakers on an HP 15-d076nr. If your laptop is not producing noise, this may be the guide for you.



TOOLS:

- [Phillips #0 Screwdriver](#) (1)
- [Phillips #1 Screwdriver](#) (1)
- [Spudger](#) (1)



PARTS:

- [HP Speaker assembly](#) (1)
Speaker
Part # 747135-001

Step 1 — Battery



- Orient the laptop upside down so that the back of the laptop, where the battery is located, faces you.
- Locate the left and right switches at the bottom of the laptop.

Step 2



- Move the right switch to the left so that the orange unlock symbol is showing.

Step 3



- Move the left switch to the right, covering the battery symbol, and hold.

Step 4



- While holding the left switch in place, slide the battery towards you and away from the laptop.

Step 5 — Wireless Card



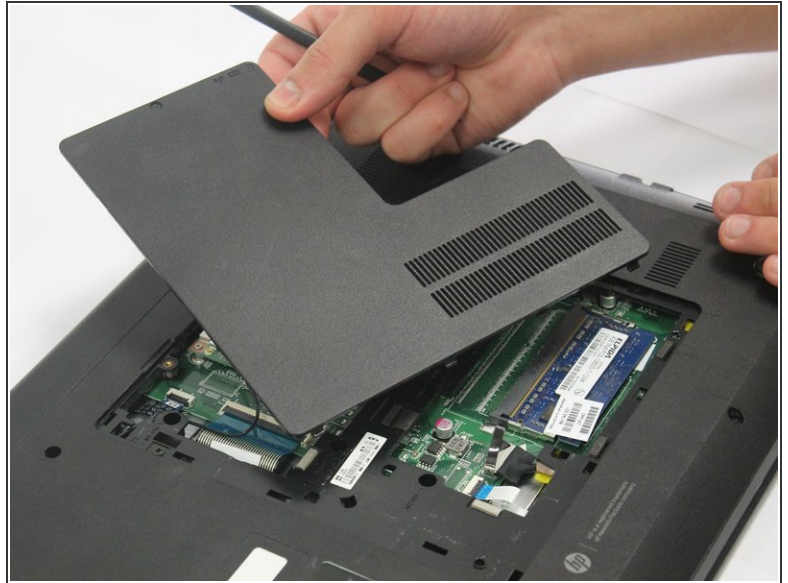
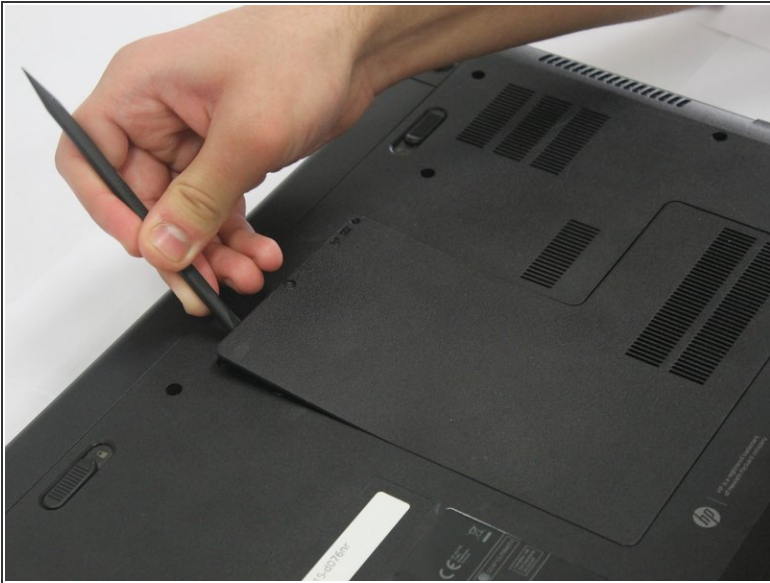
- Re-orient the laptop, so that the back of the laptop faces away from you.

Step 6



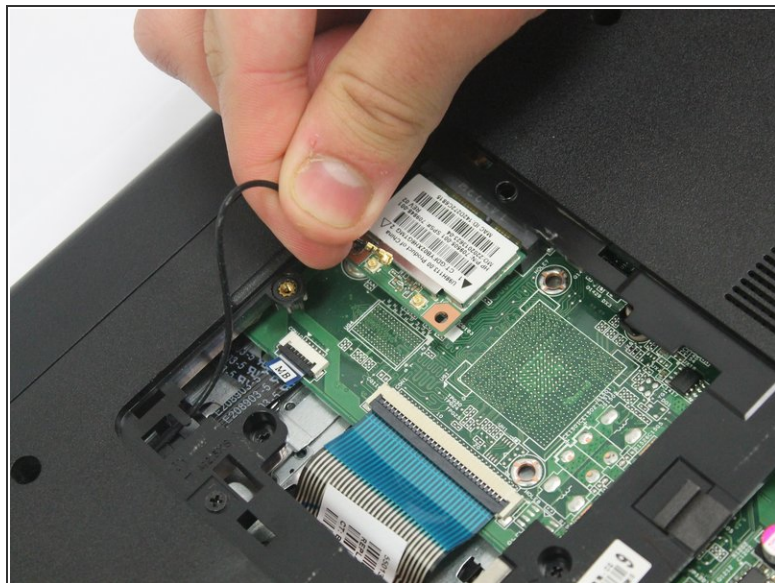
- Locate the small screw on the panel at the center of the laptop.
- Loosen the small screw using a Philips # 1 screwdriver.
- ⓘ The screw does not come free from the panel. It only needs to be loosened enough so that the panel can be lifted/pried.

Step 7



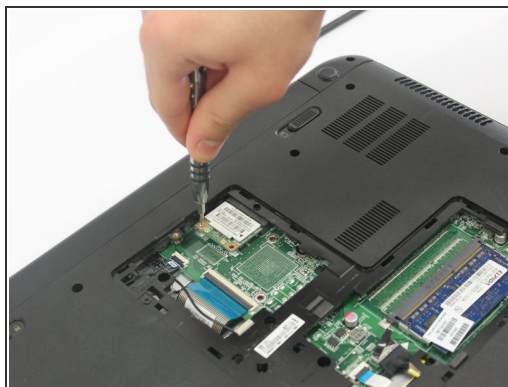
- Carefully pry the middle panel up using a plastic spudger, or other prying tool .
- Pull the panel away from the laptop and set it off to the side.

Step 8



- Gently wiggle and lift the black antenna wire away from the wireless card.
- i** If there is also a white wire attached, both black and white wires will need to be removed from the wireless card.

Step 9



- Locate the Phillips 2.0x3.0mm screw on the upper left corner of the wireless card.
- Carefully remove the 2.0x3.0mm screw using a Philips #0 screwdriver.

Step 10



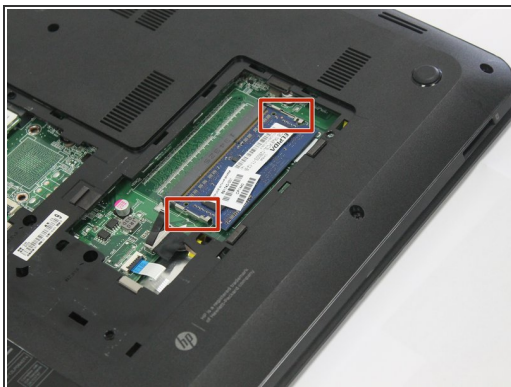
- Slide the wireless card to the left to remove it from the socket.

Step 11 — Motherboard



- Locate the RAM in the exposed area.

Step 12



- Locate the latches on the RAM.
- Slide the latches away from the RAM using a plastic spudger.
- ⓘ The RAM might spring out.

Step 13



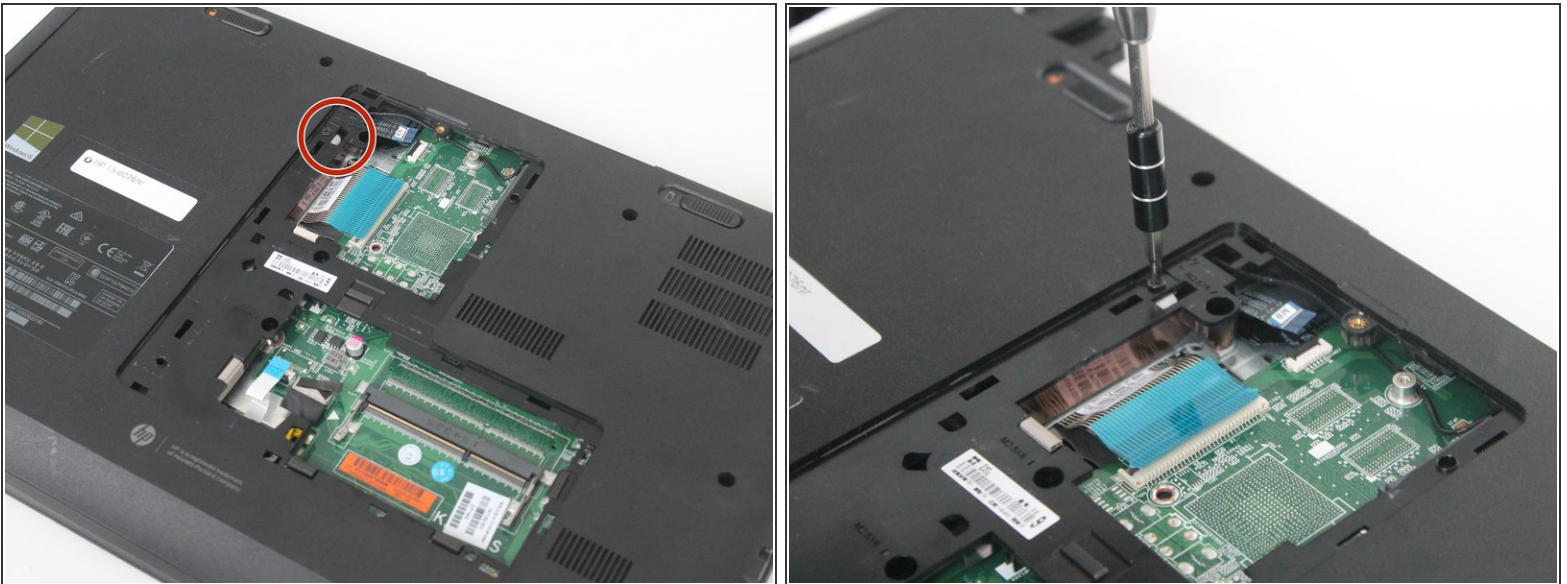
- Remove the RAM.

Step 14



- Locate the ribbon cables.
- Pry up the black tabs on the connectors and disconnect both of the ribbon cables.

Step 15



- Locate the DVD drive screw.
- Remove the Phillips PM2.5×6.5 screw using a Phillips #0 screwdriver.
- i* Continue using a Phillips #0 screwdriver for the rest of this guide, and subsequent guides.
- i* Take the screw and place it in a container so as to not lose it.

Step 16



- Push down the tab that is located by the DVD drive screw.
- Take the DVD drive in one hand, and using the plastic spludger, push the tab down, and out.

Step 17



- Remove the fourteen Phillips PM2.5×6.0 screws, and place them in a separate container.

Step 18



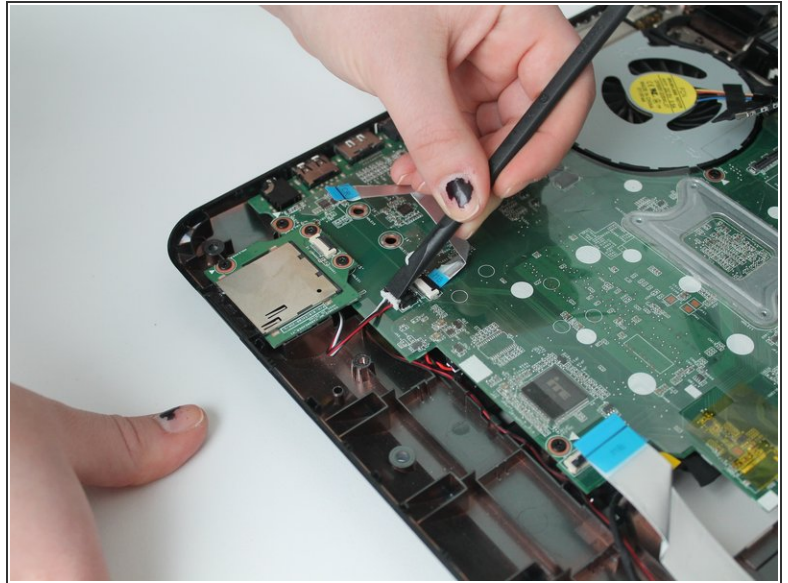
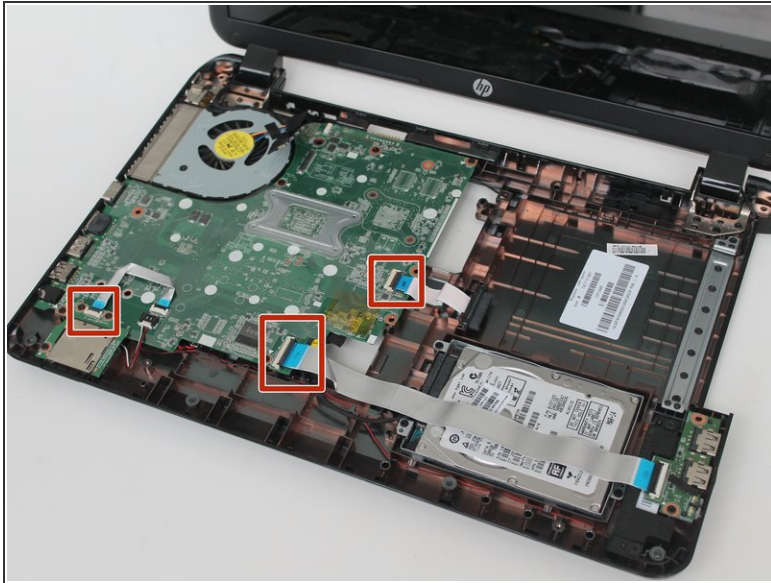
- Flip the laptop over, and open it as if you were using it.
- Gently, remove the laptop cover/keyboard from the laptop using the plastic spudger.
- ⓘ When you remove the cover/keyboard, the laptop will become top heavy.

Step 19



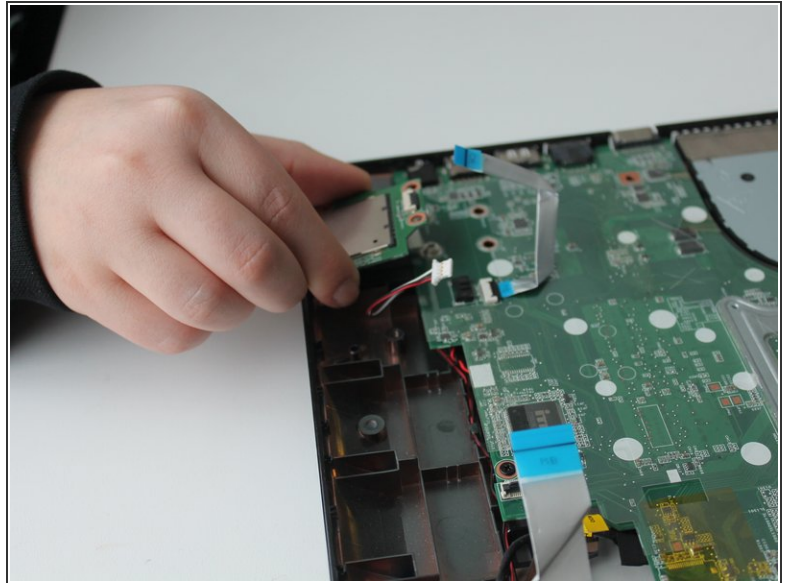
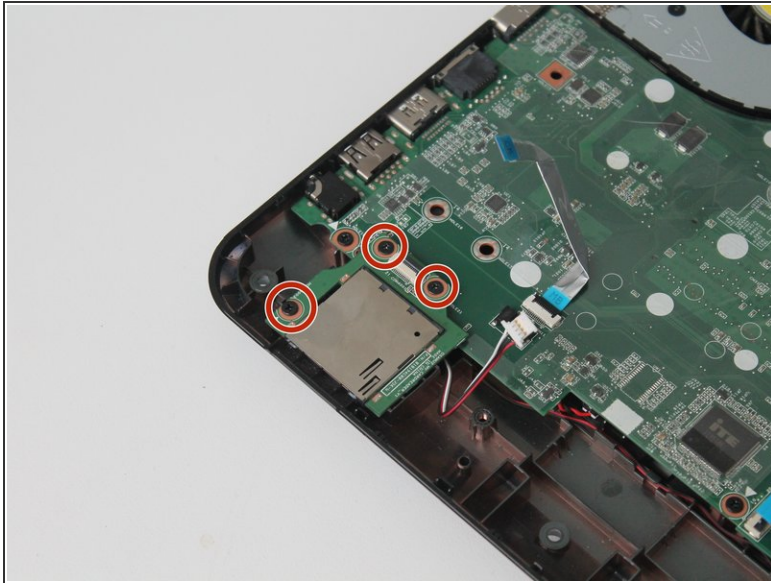
- Disconnect the monitor cable, using the plastic spudger, and pry it upwards.
- Pull the cable from its routing until it is free.

Step 20



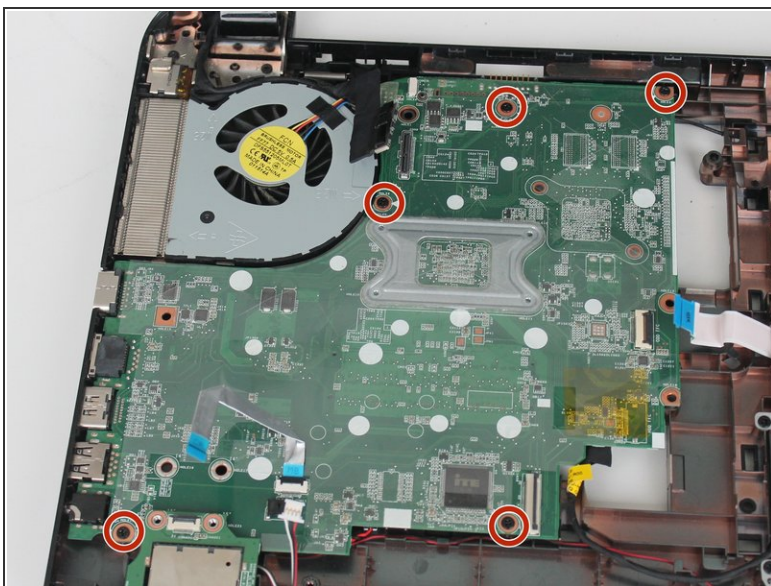
- Lift the black tabs, and disconnect the three ribbon cables.
- Disconnect the red-black-white speaker cable located in the lower left corner.

Step 21



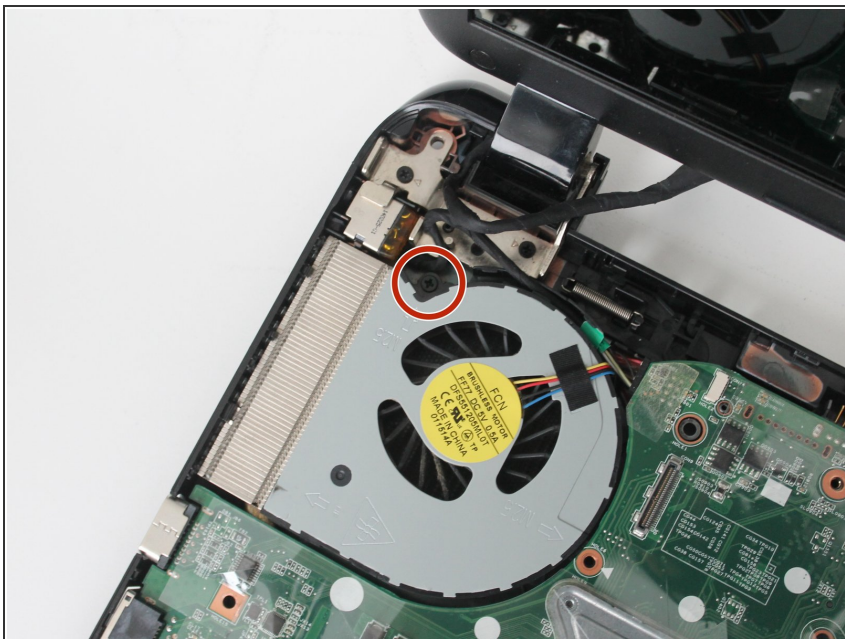
- Remove the three Phillips PM2.5×4.0 screws on the card reader in the bottom left corner.
- Place the screws in a separate container.
- Remove the card reader.

Step 22



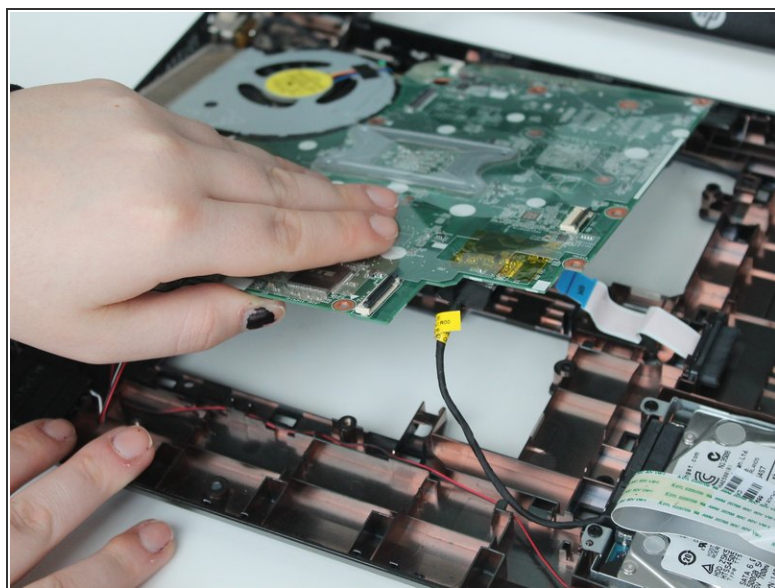
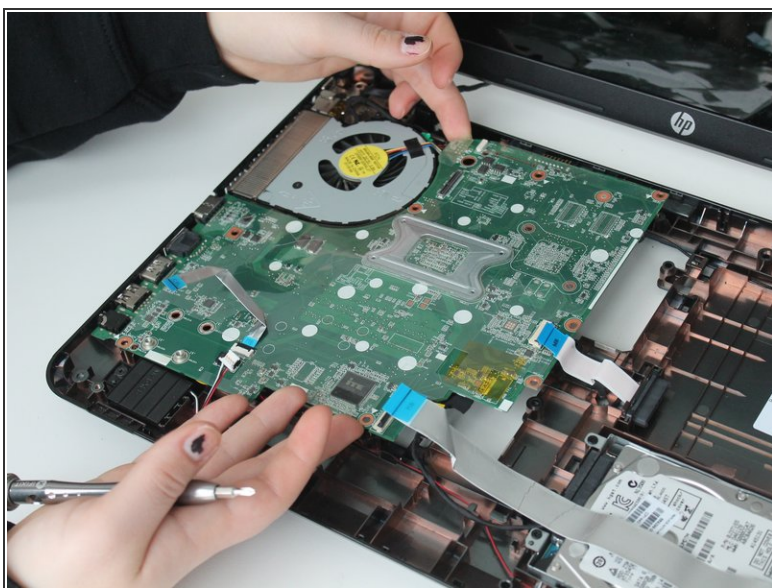
- Remove the five Phillips PM2.5×5.0 screws on the motherboard.

Step 23



- Remove the Phillips PM2.5x5.0 screw located on the fan, in the upper right corner.

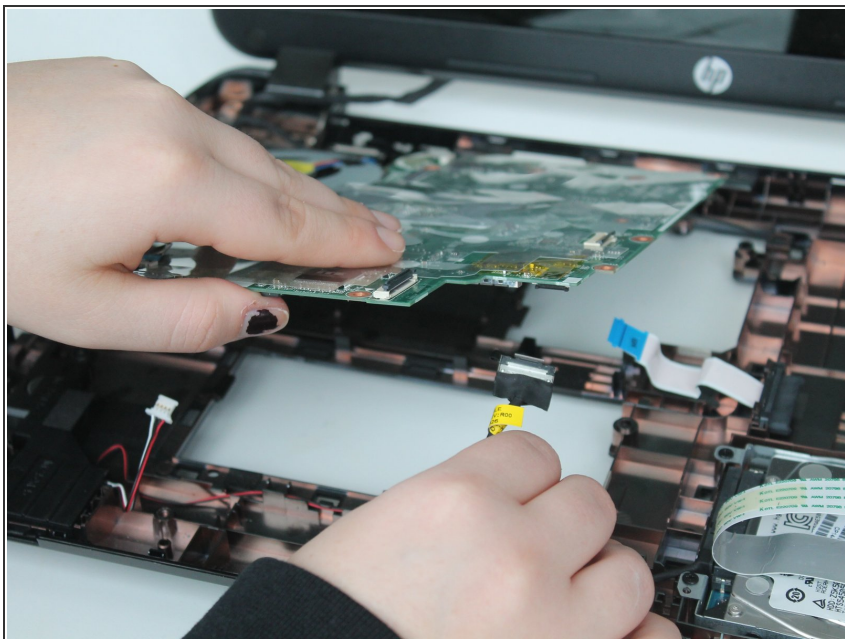
Step 24



- Carefully lift up the motherboard.

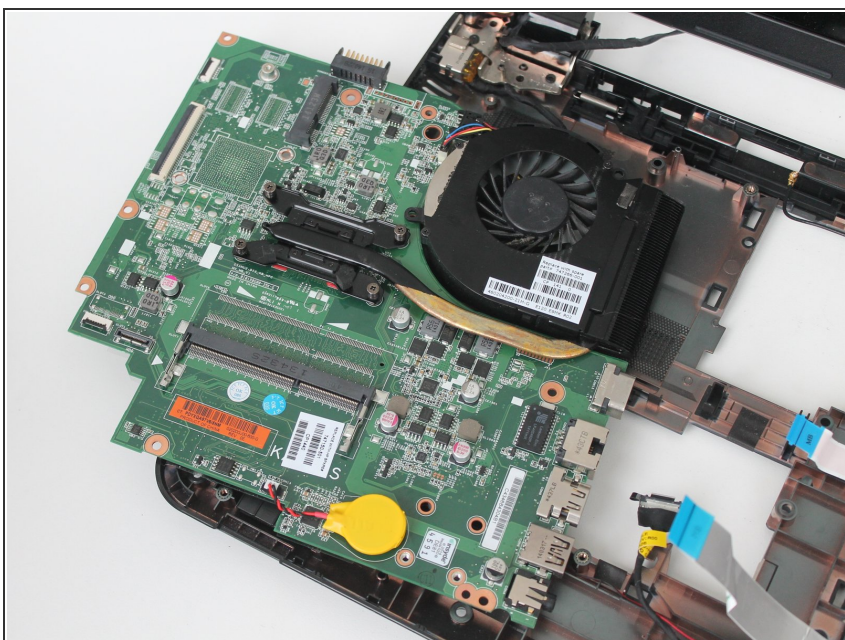
⚠ Do not completely remove the motherboard. Simply lift it. There is a black cable on the bottom of the motherboard that is anchoring it.

Step 25



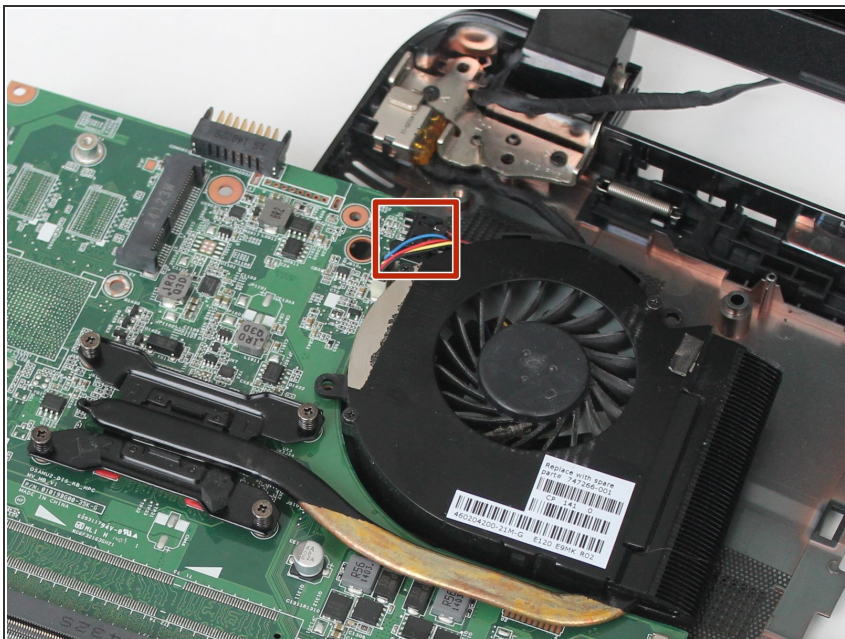
- Locate the cable on the underside of the motherboard, in its lower right corner.
- Carefully grip the cable, and pull downward to remove it.

Step 26



- Flip the motherboard over.

Step 27



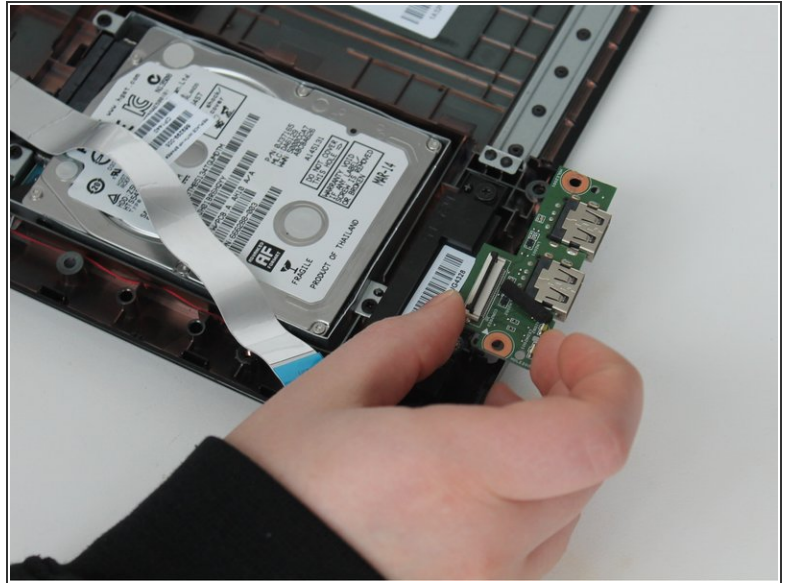
- Locate the charge port cable connection point on the motherboard.
- Grab the charge port cable's connector, and wiggle it to remove it.
- Set the board off to the side.

Step 28 — Onboard Speakers



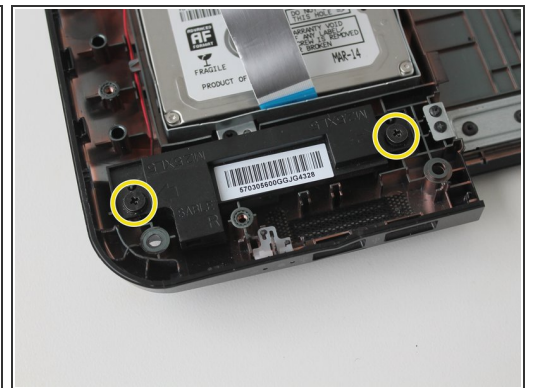
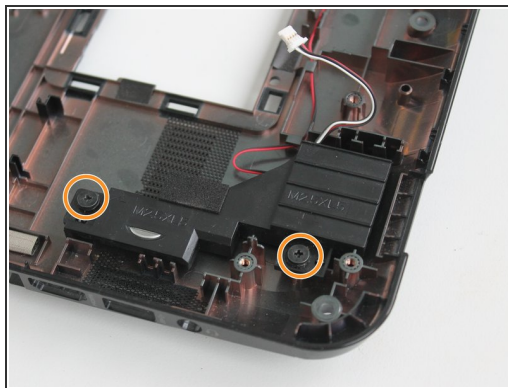
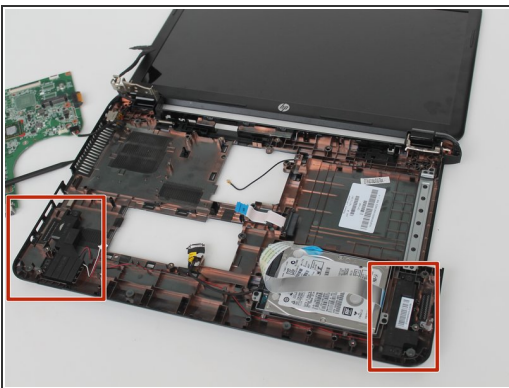
- Disconnect the ribbon cable in the bottom right corner of the laptop.

Step 29



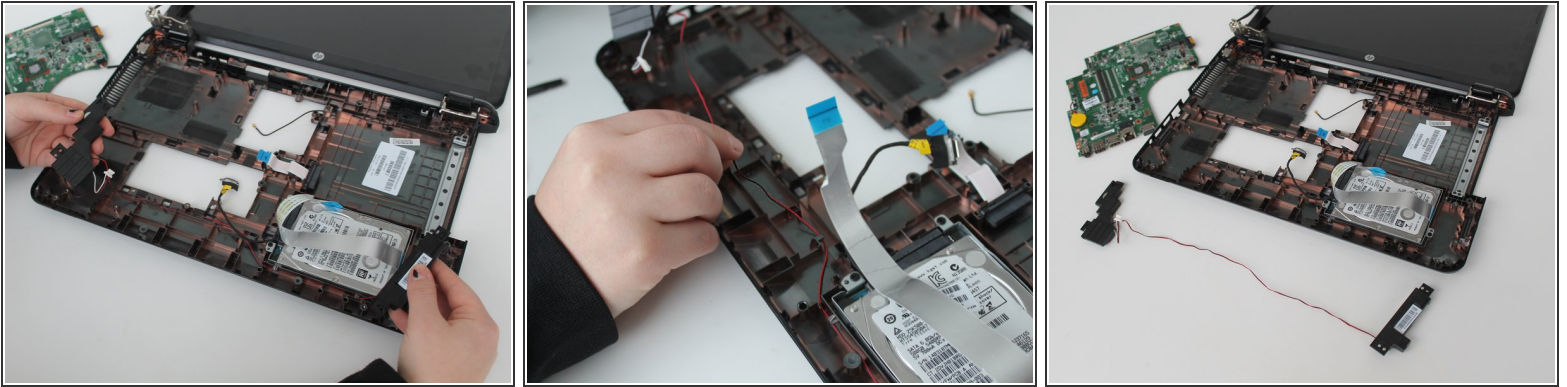
- Remove the Phillips PM2.5x5.0 screw connected to the USB board.
- Remove the USB board.

Step 30



- Locate the two speaker modules.
- Remove the two Phillips PM2.5x4.0 screws on the bottom left module.
- Remove the two Phillips PM2.5x4.0 screws on the bottom right module.

Step 31



- Slowly lift the speakers away from the laptop body.
- Remove the red and black cable, connecting the two speaker modules, from its routing.
- Remove the speakers from the laptop body.

To reassemble your device, follow these instructions in reverse order.