



# Asus G501JW-BHI7N12 Device Page Hard Drive Replacement

Replacing a hard drive that is either full or damaged in order to be able to store data again.

Written By: Bruce Baker



## INTRODUCTION

Make sure your replacement Hard Drive is compatible with this model of laptop. If you have any private information or anything else you want to keep for later, be sure to transfer the data out of it or destroy it if you cannot delete the data on it and plan on throwing it out.



### TOOLS:

- [Phillips #1 Screwdriver](#) (1)
  - [Anti-Static Wrist Strap](#) (1)
-

## Step 1 — Hard Drive



- Attach anti static wrist guard to your hand and secure clip to the laptop case.

## Step 2



- Remove the four 7mm Phillips #0 Screws from the hard drive.

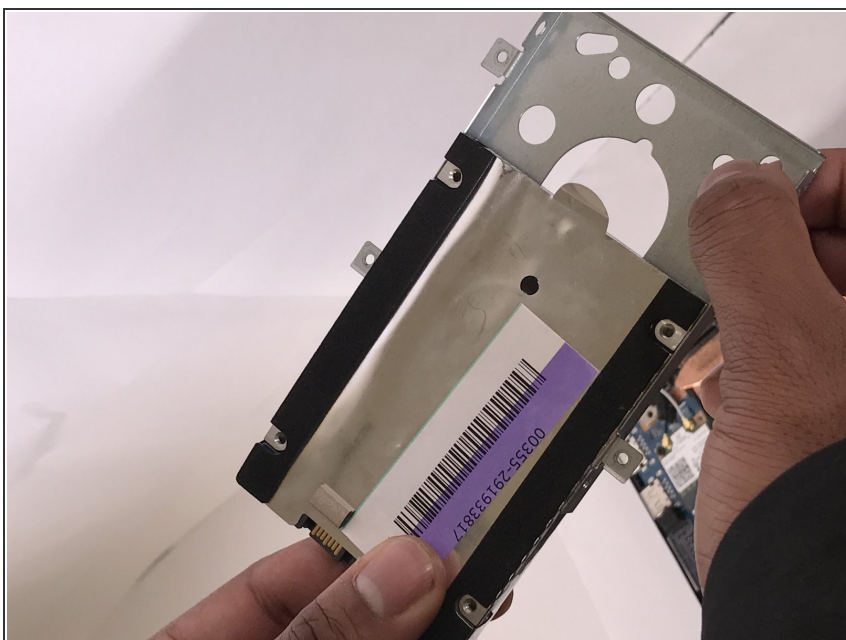


### Step 3



- Using a Phillips 1 screwdriver, unscrew the four 4.5 mm screws from the sides of the hard drive.

### Step 4



- Pull the hard drive out of the metal frame.

To reassemble your device, follow these instructions in reverse order.