

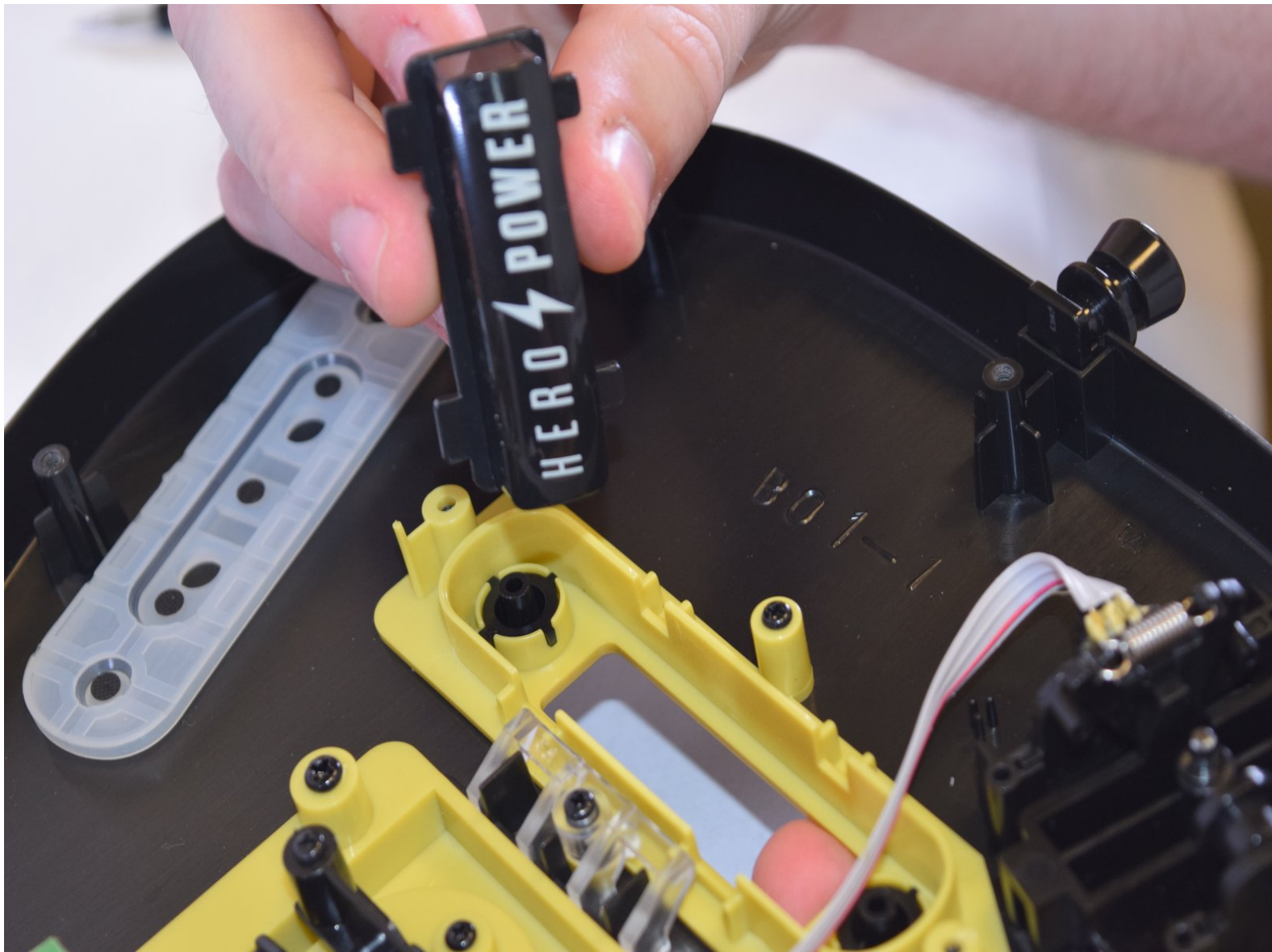


# Activision Guitar Hero Live Guitar Controller

## Hero Power Button Replacement

The Hero power button which is located right below the strum bar, controls a bonus in game power-up.

Written By: Erik Wiseman



---

## INTRODUCTION

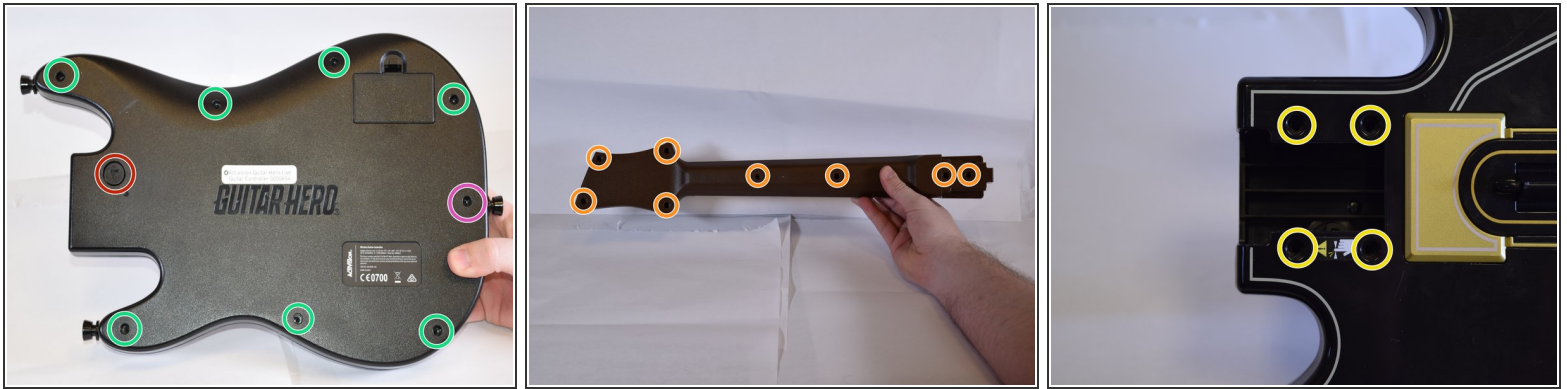
Here we are going to disassemble the Guitar Controller so that we can replace the Hero Power Button.



### TOOLS:

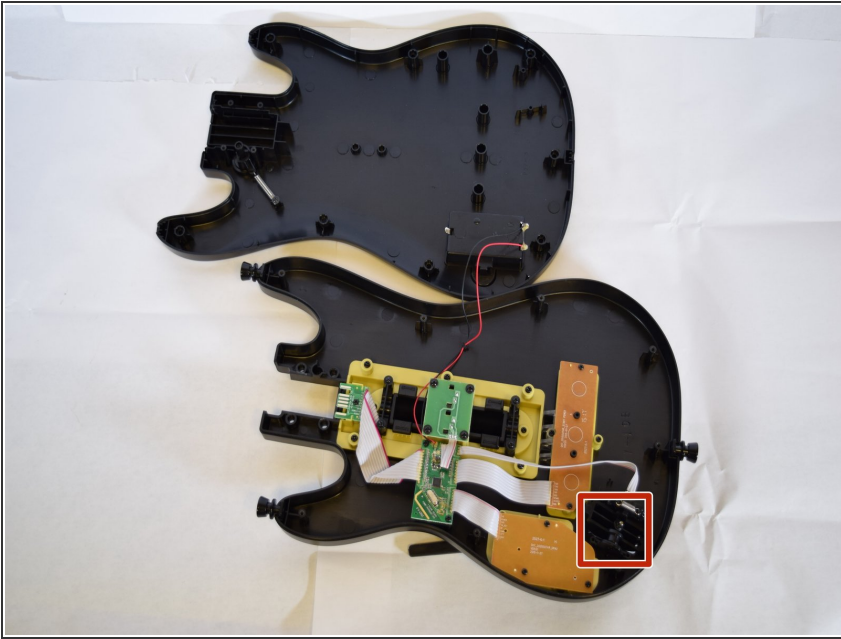
- [Phillips #00 Screwdriver](#) (1)
  - [.25" Flathead Screwdriver](#) (1)
  - [Phillips #0 Screwdriver](#) (1)
-

## Step 1 — Casing



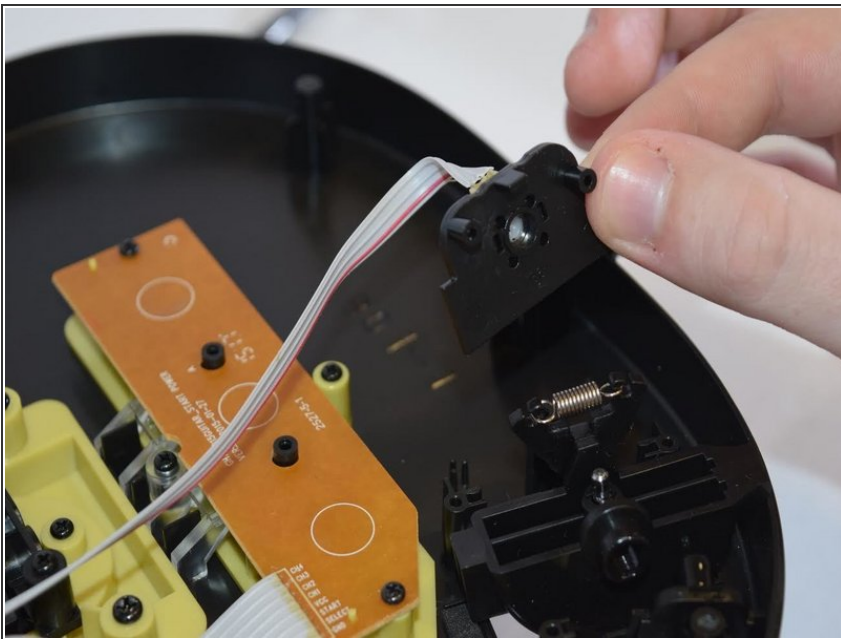
- The first thing we want to do is remove the neck from the body. This is necessary to access either the inside of the neck or the body.
  - The round tab with a triangle can be turned by inserting a .25" tip Flathead screwdriver and turning. Simultaneously, as the tab turns about a quarter circle, pull the neck and it should slide out with minimal force.
  - Once the neck has been separated from the body remove the eight screws from the back of the neck with a Phillips Head 0 screwdriver. All screws are 12 mm.
  - Next remove the four screws that were covered by the neck.
  - Finally, remove the eight screws from the back of the body.
    - This screw at the bottom of the body is a bit longer than the others.
  - With all the screws out, both the neck and the body shells should open with minimal force.
- ⚠ When separating the front and back half of the body do so carefully as the wiring from the battery pack to the components is fixed to each half with adhesive and can detach from any of the points if pulled to roughly.

## Step 2



- These are the whammy bar components, we highly recommend removing these components before working on other areas of the body as the whammy bar protrudes making it difficult to rest on a flat surface.
- To remove the whammy bar, follow the steps included in the whammy bar replacement guide, found on our device.

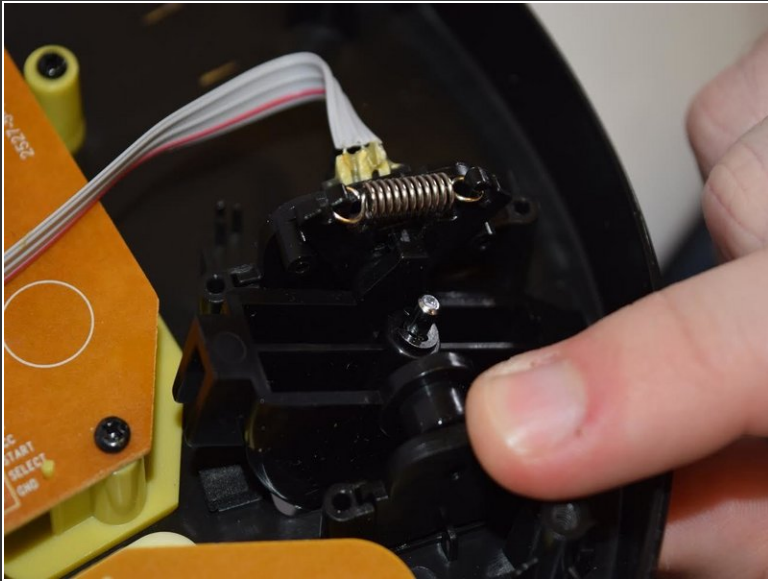
## Step 3 — Whammy Bar



- After opening the controller carefully remove the piece of plastic connected to the strip of wire as shown in the photo.
- ⓘ After the piece of plastic which connects to the wire has been removed, set it aside where it won't be damaged.

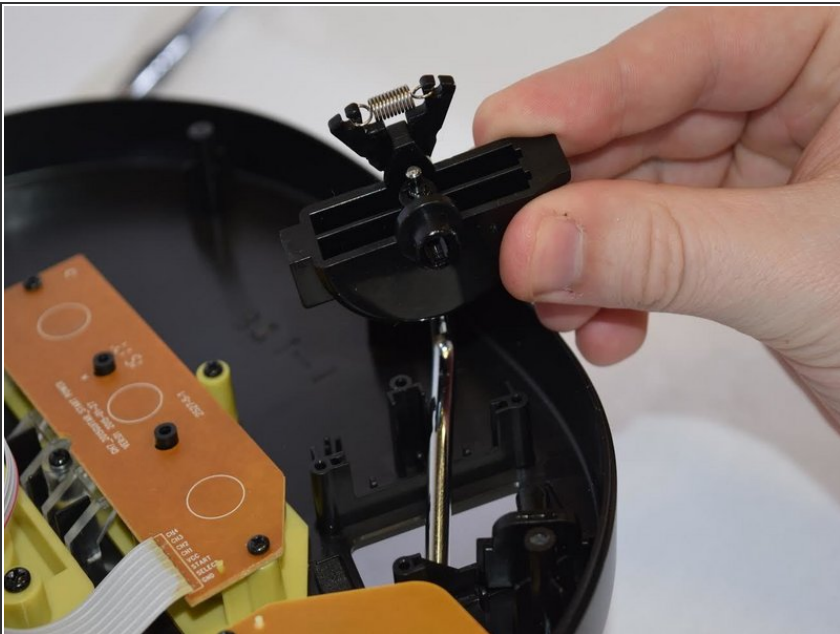


## Step 4



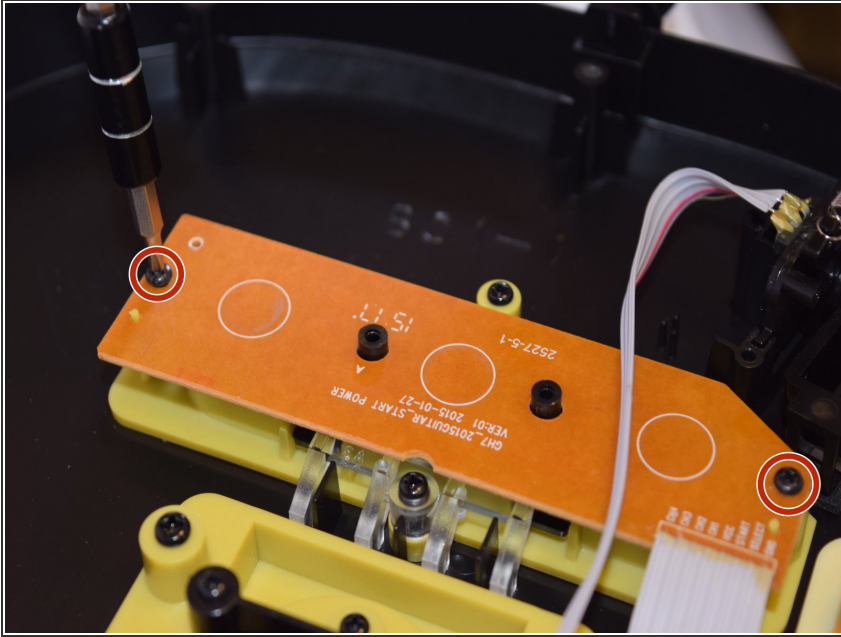
- Carefully remove the cylinder-shaped lid, by pulling outwards on the piece, it will slide out easily.
- ⓘ There should be a click when the piece has disconnected, then slowly slide part out and store safely.

## Step 5



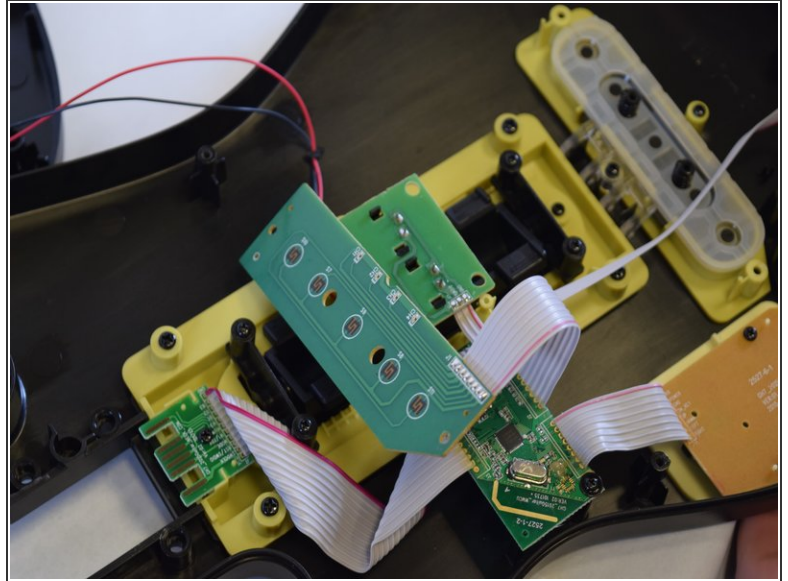
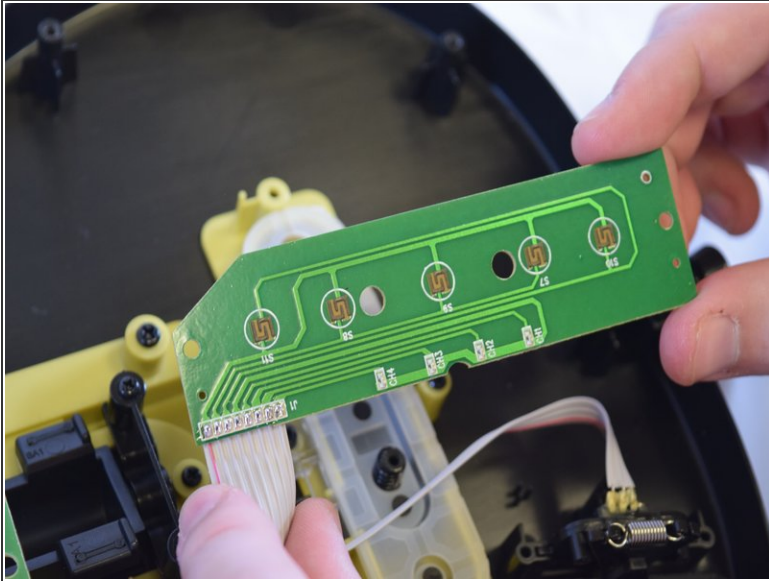
- Grab the Whammy Bar by the base of the component, and gently lift to remove the bar.
- ⓘ There won't be anything holding the Whammy Bar in place at this point, so if you feel any tension something may be caught on the Whammy Bar.

## Step 6 — Hero Power Button



- First, we are going to unscrew the Hero Power Button panel, which extends from the Motherboard to the Hero Power button's location. Use a Phillips Head 0 screwdriver to unscrew both screws.
- ⓘ The two screws being removed are 12 mm, and do not have a flared edge.

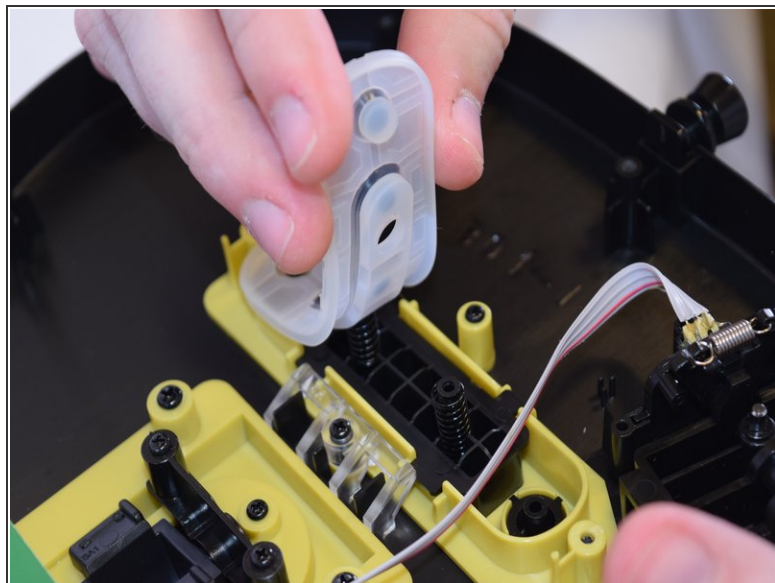
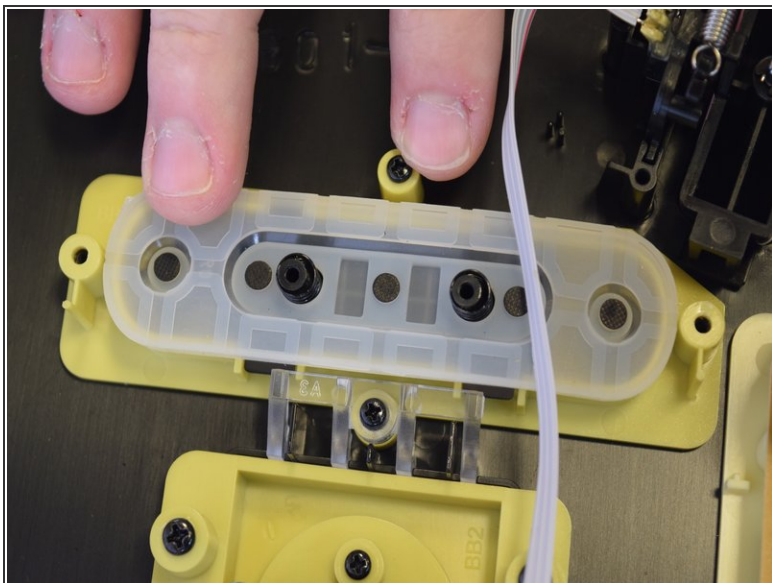
## Step 7



- Once the panel has been unscrewed, gently lift the panel from the Guitar Controller. Make sure you hold the panel by the corners, as well as the white wire wrap which is attached to the panel.
  - Set the Panel aside; if you have removed the Motherboard altogether, set all of the paneling and Motherboard aside carefully.
- ⚠ Do not jam the panel in any straining places, also be careful with the white wire wrap, which can disconnect from the panel with too much force.



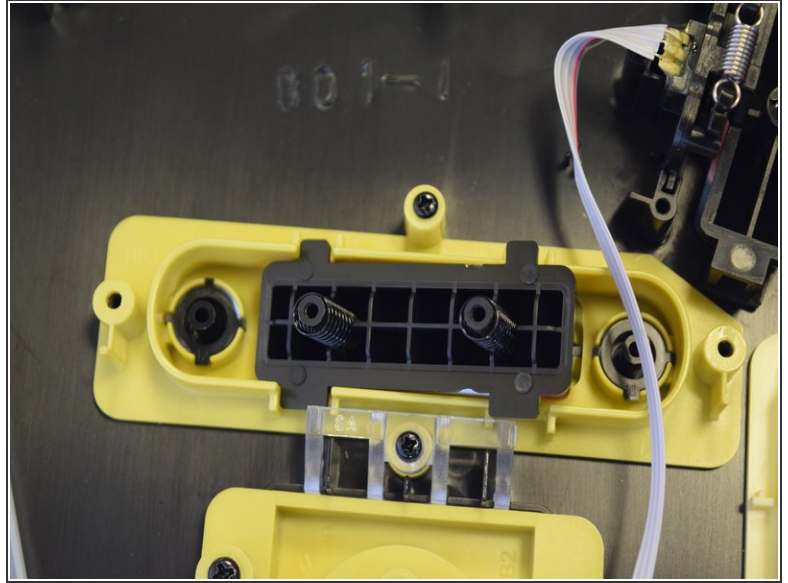
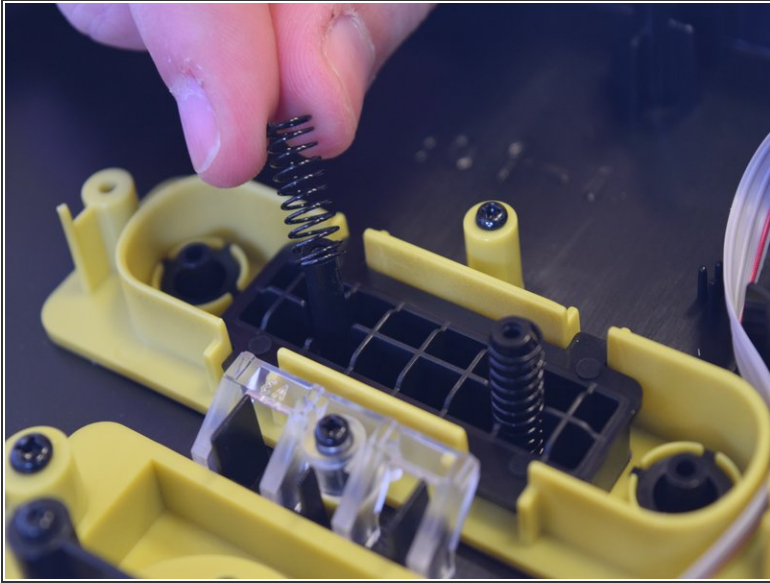
## Step 8



- Now that the panel has been removed and set aside, we are left with a gummy pad which covers the bottom side of the Hero Power Button.
- Gently pull up from either side of the gummy pad, it will come off easily with very little force.



## Step 9



- i** Once the gummy pad is removed, there will be visible springs on both features coming out of the button.
- These springs can simply be pulled off of these cylinder-like features. This is recommended as the springs can easily come off accidentally.
  - Then, pull the button out of its slot, and replace with a new Hero Power Button.

To reassemble your device, follow these instructions in reverse order.