



# HP Envy dv7 Hard Drive Replacement

This guide is a how-to on the replacement of a hard drive in a HP Envy dv7. This guide is for those who want to breathe new life into an older laptop.

Written By: Rayvin Rainer



---

## INTRODUCTION

This guide is for those who want to replace the hard drive in their HP Envy DV7 laptops.

---



### TOOLS:

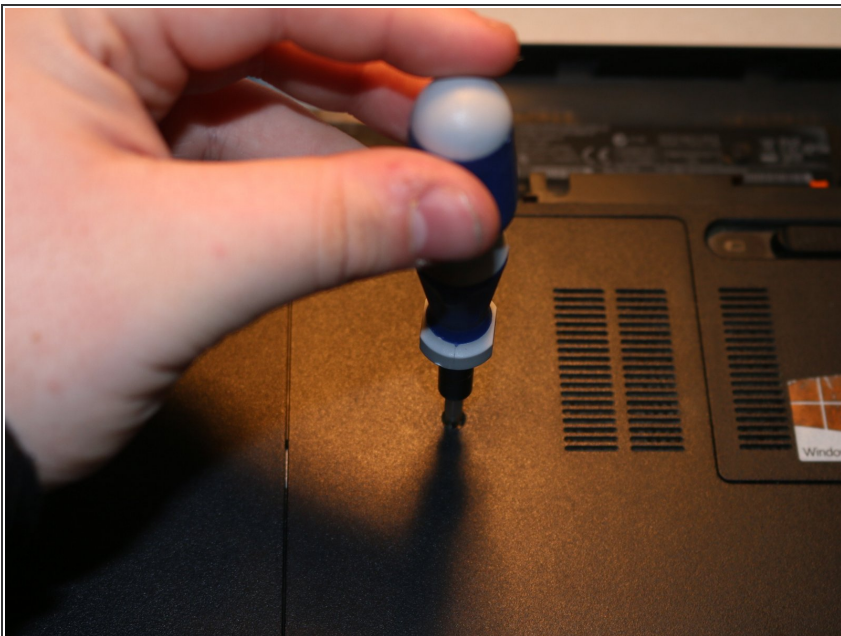
- [Phillips #1 Screwdriver](#) (1)
  - [Magnetic Project Mat](#) (1)
-

## Step 1 — Hard Drive



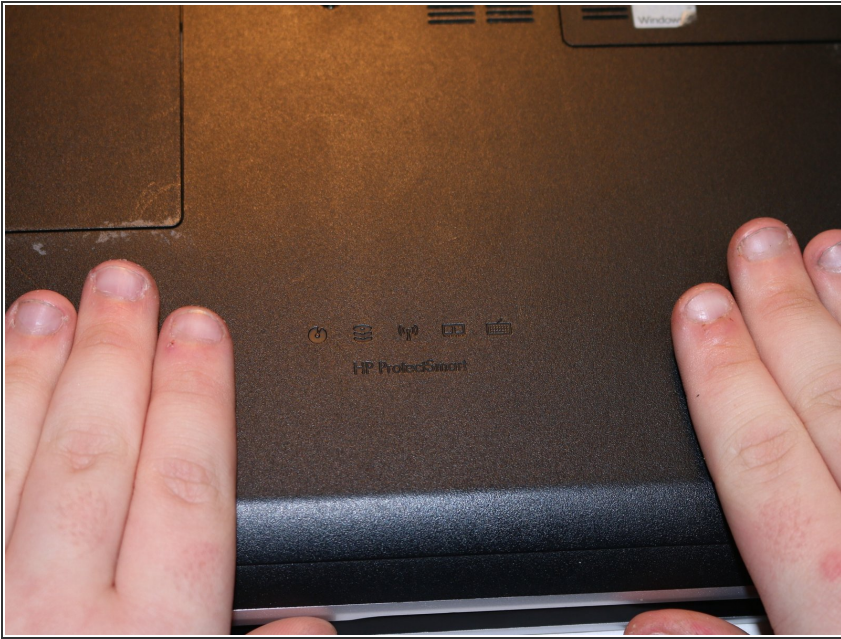
- Slide the switch shown in the circle above and remove the battery from its housing. No screws are required to remove this part, and the battery should come out with little to no effort.

## Step 2



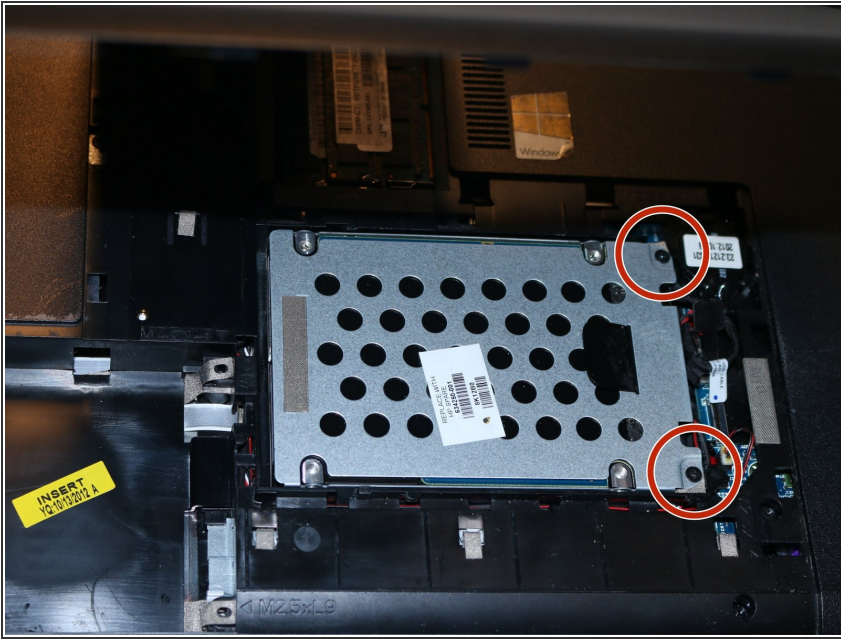
- After removing the battery, find the center screw and unscrew it using a #1 Phillips head screwdriver until it will not unscrew any further.
- ⓘ This screw is not supposed to come out, so do not be frustrated when you are not able to take it out.

## Step 3



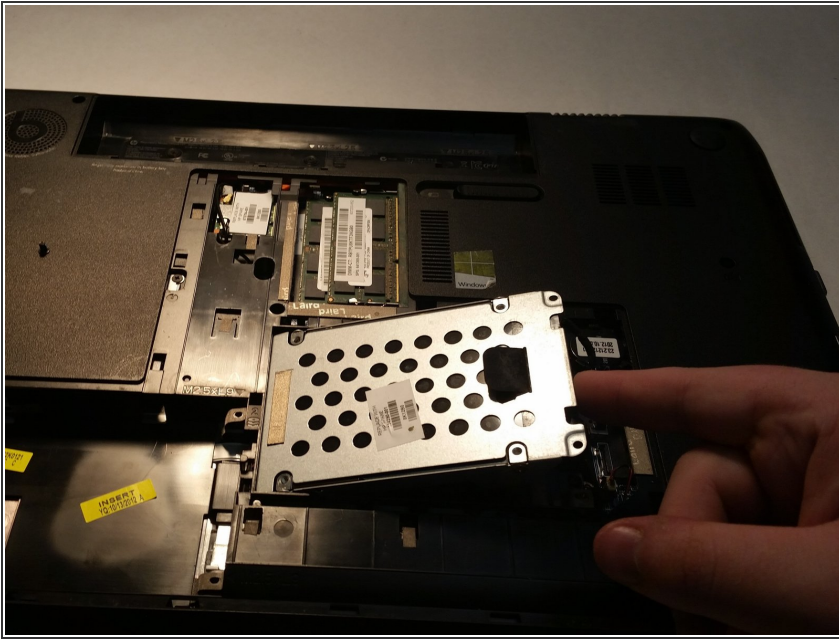
- After undoing the center screw, the back cover will be able to slide off of the computer and you will have access to the inside.

## Step 4



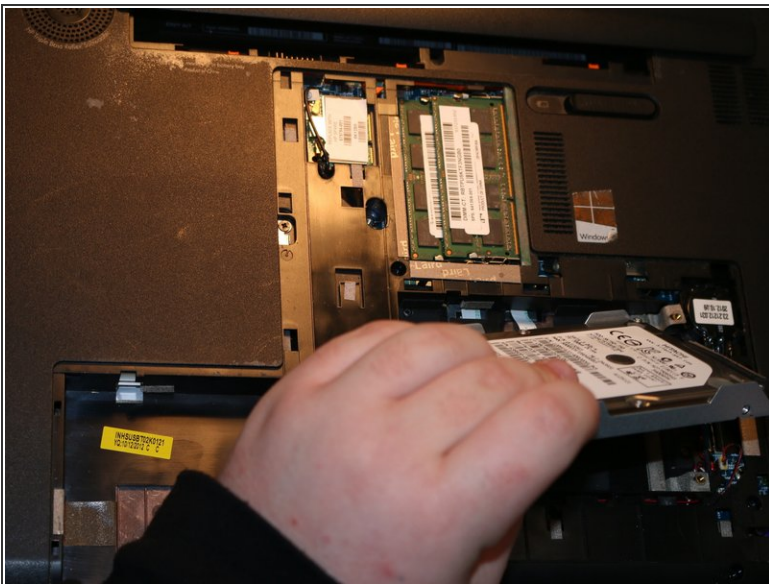
- To unfasten the hard drive's casing, there are two 3mm screws that you need to undo circled above. These screws require a Phillips #1 screwdriver.

## Step 5



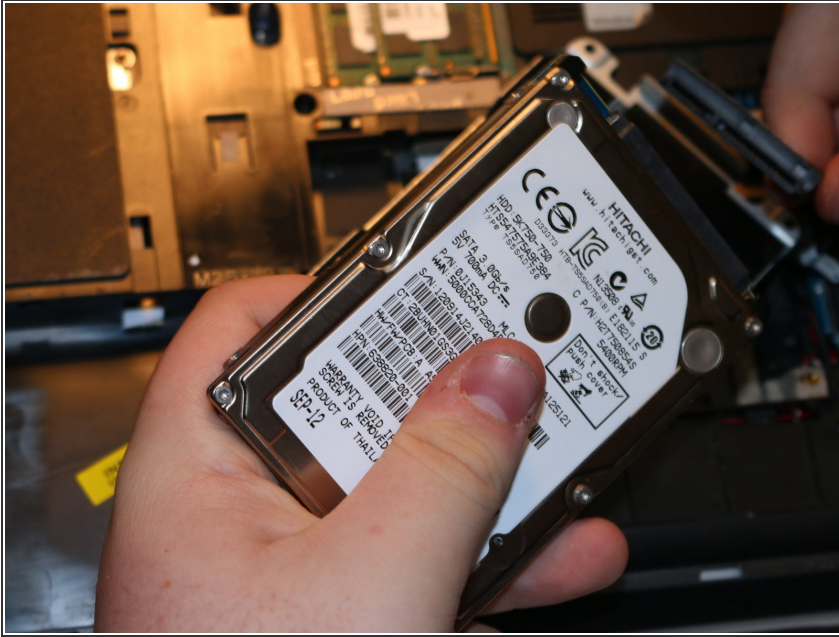
- After the screws are removed, the casing will slide to the left and then up. Make sure that the cable that connects it to the computer is as intact as possible.

## Step 6



- To gain access to the actual hard drive, there are two screws located on either long side of the casing that need to be undone. These screws are 3mm long and require a Phillips #1 Screwdriver to undo.

## Step 7



- After the screws around the casing are removed, the casing will slide off opposite to the connector. From here, grip the connector that is connected to the hard drive and gently pull to remove it.
- From here, you are free to implement whatever hard drive unit you want to, just make sure to verify that the hard drive is compatible with your computer.

To reassemble your device, follow these instructions in reverse order.