



# Toshiba Satellite C55Dt-A5306 CMOS Battery Replacement

This guide will show users how to replace the CMOS battery.

Written By: Nahrain Putris



---

# INTRODUCTION

This guide will show users how to replace the CMOS battery.



## TOOLS:

- [Phillips #0 Screwdriver](#) (1)
  - [Spudger](#) (1)
-

## Step 1 — Battery



- Place fingers on the latches and slide outwards to unlock.

## Step 2



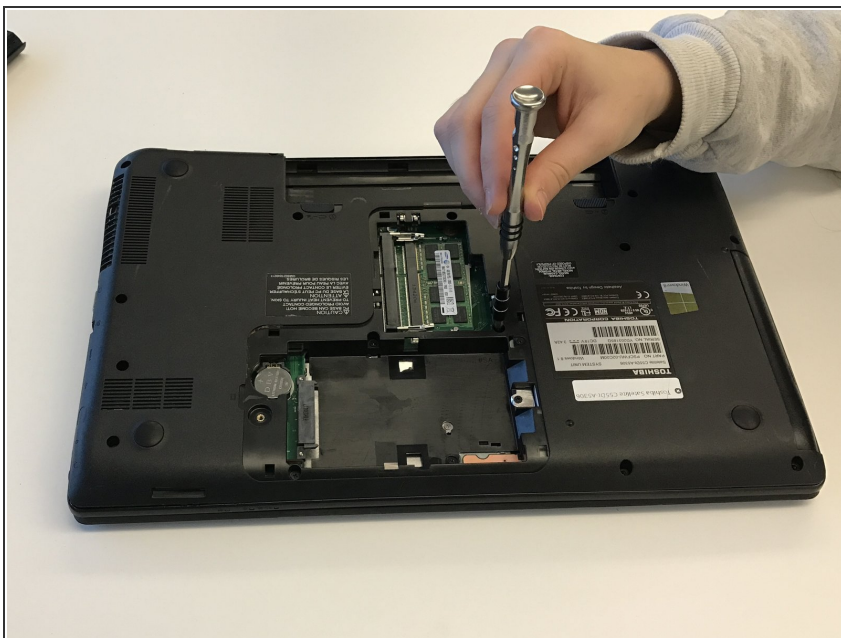
- Remove battery.

### Step 3 — CMOS Battery



- Using the Phillips Head #0 Screwdriver, remove one 3mm Phillips #0 screw as indicated.

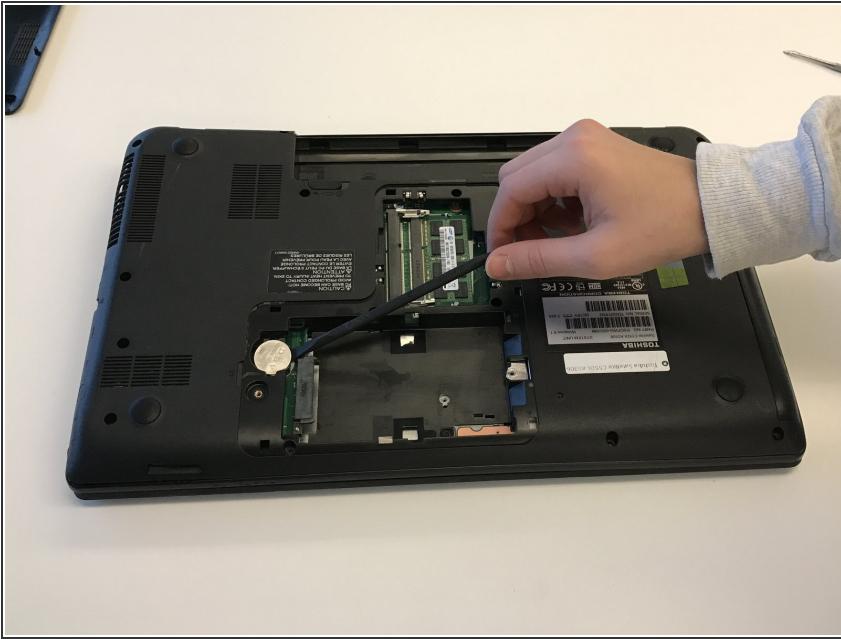
### Step 4



- Remove hard drive cover.



## Step 5



- Using the plastic spudger, remove the CMOS battery, which had the letters DBV on it.

## Step 6



- Replace CMOS battery.

To reassemble your device, follow these instructions in reverse order.