



Sony SRS-X55 DC POWER CONNECTION

This is a guide outlining how to replace the speaker system of a Sony SRS-X55.

Written By: Chris Sparzo



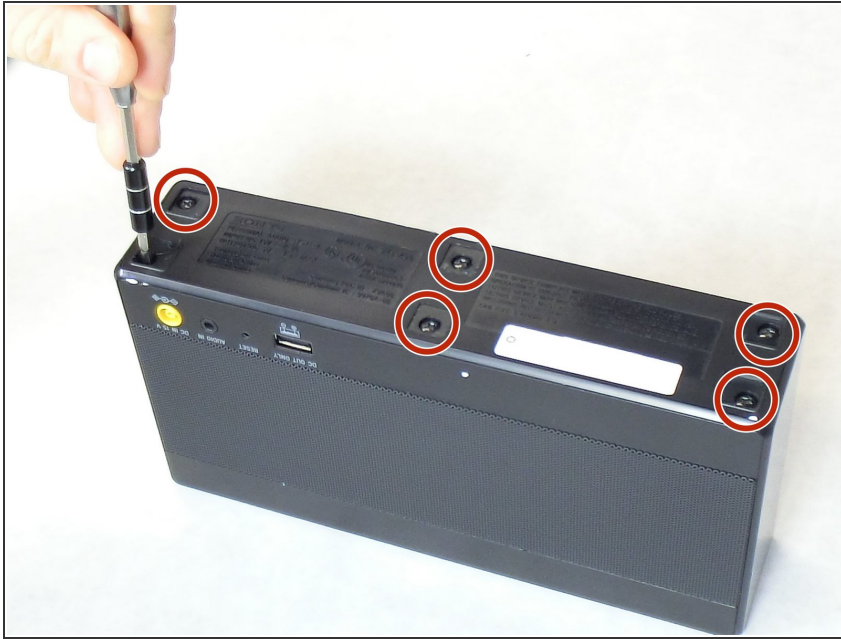
INTRODUCTION

This guide will demonstrate how to replace the speaker system of the Sony SRS-X55 portable speaker. Upon the completion of this guide the entire speaker system will be removed and replaced.

TOOLS:

- [Phillips #2 Screwdriver](#) (1)
 - [Spudger](#) (1)
 - [Tweezers](#) (1)
 - [Soldering Workstation](#) (1)
-

Step 1 — DC POWER CONNECTION



- Remove the six 9 mm screws on the bottom panel using the Phillips head #2.

Step 2



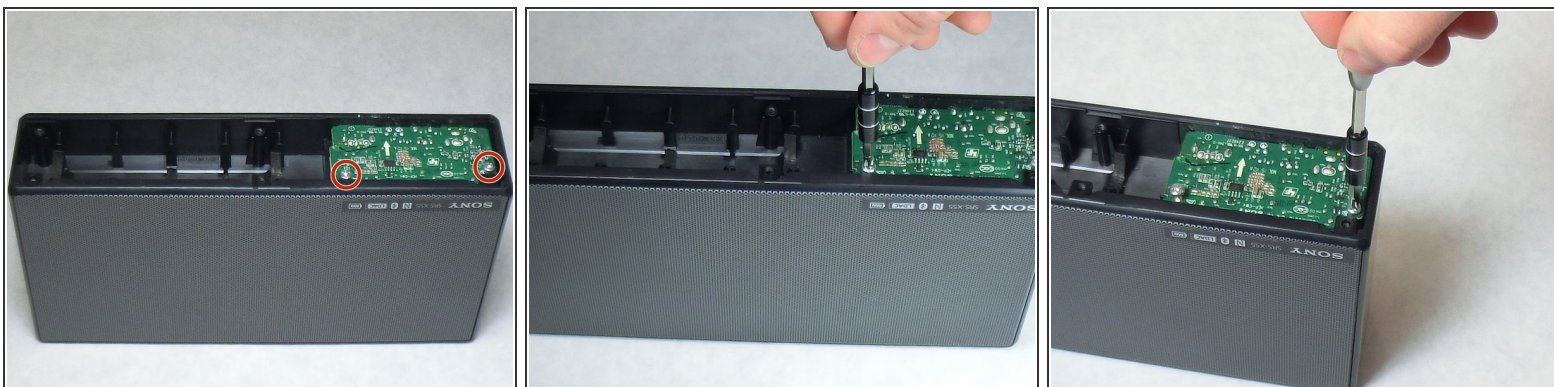
- Use the spudger tool to pry the bottom panel from the body.

Step 3



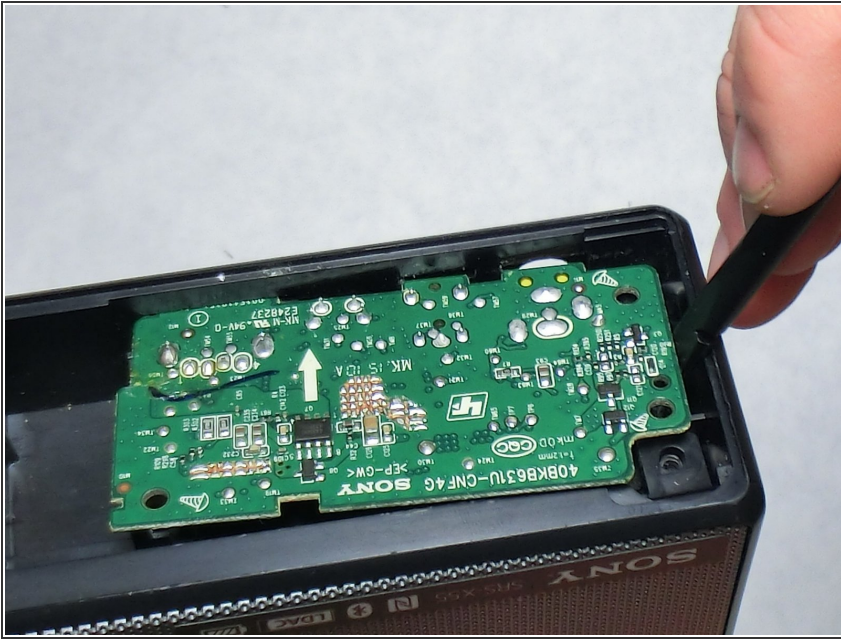
- Unplug the wiring connecting the battery to the IO board using the tweezers, then remove the battery.

Step 4



- Remove the 3.5 mm silver screws on top of the I/O board using Phillips head #2 screw driver.

Step 5



- Use the plastic spudger to lift the I/O board from the speaker body.

Step 6



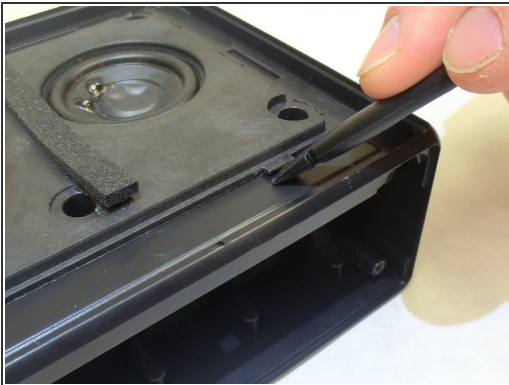
- Insert the plastic sudger into the seam where the metal speaker cover meets the speaker body. Slide the sudger along the edge to detach the two components and set aside the cover.

Step 7



- Remove the 8.9 mm screws holding the speaker assembly to the speaker body using Phillips head #2 screw driver.

Step 8



- Place the plastic spudger under one of the tabs on the face of the speaker assembly and gently lift it from the speaker body.

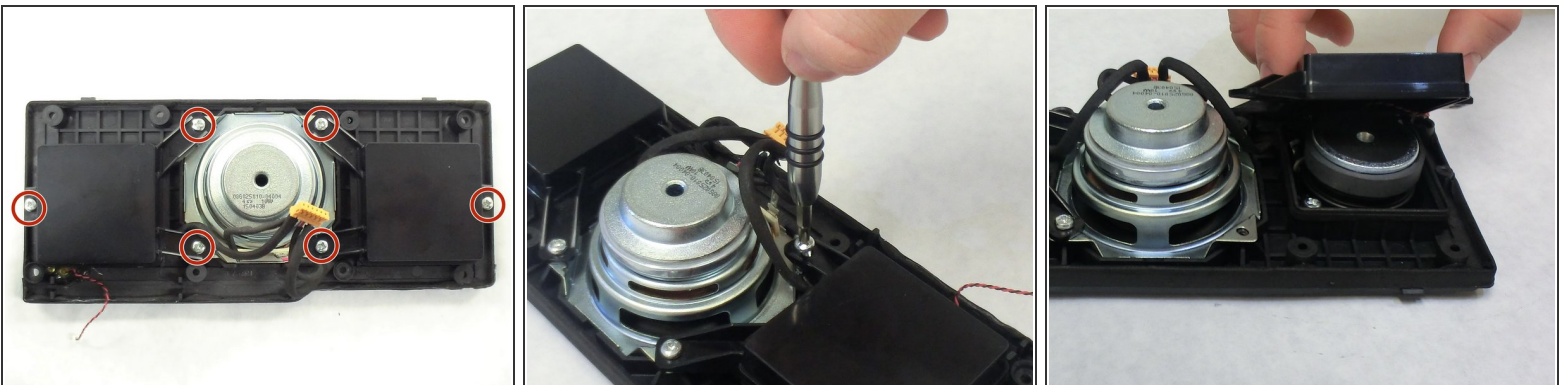
⚠ Wires connect the speaker assembly to the inside of the speaker body. Move on to the next step before lifting speakers entirely from body to avoid damaging wires.

Step 9



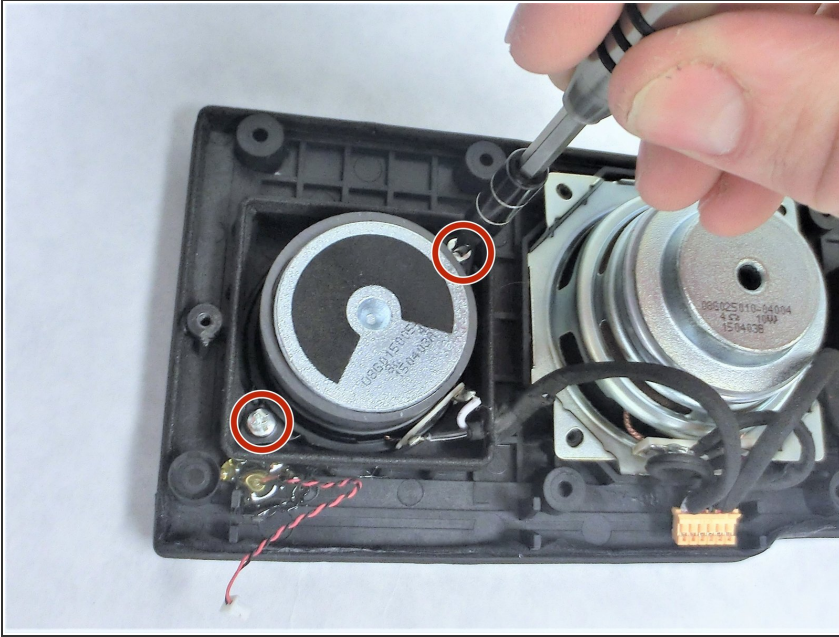
- Use the tweezers to disconnect the two cables from the input board and motherboard and finish lifting the speaker assembly from the speaker body.

Step 10



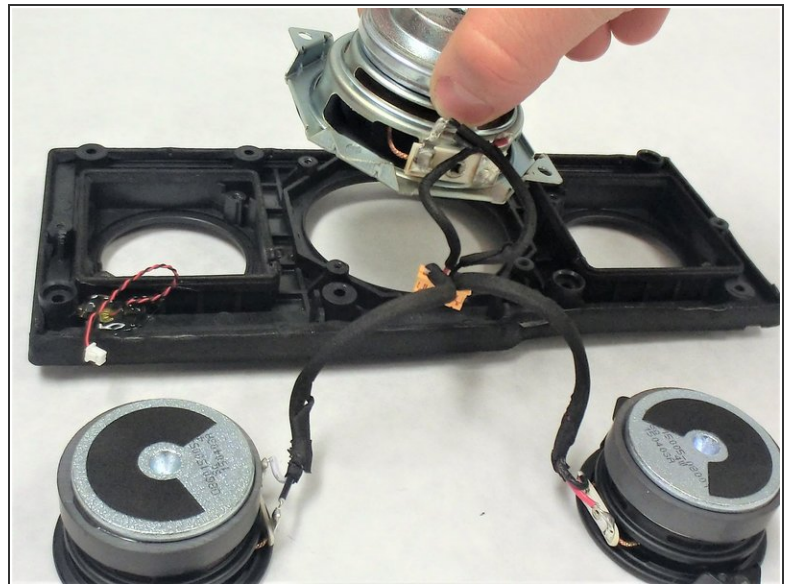
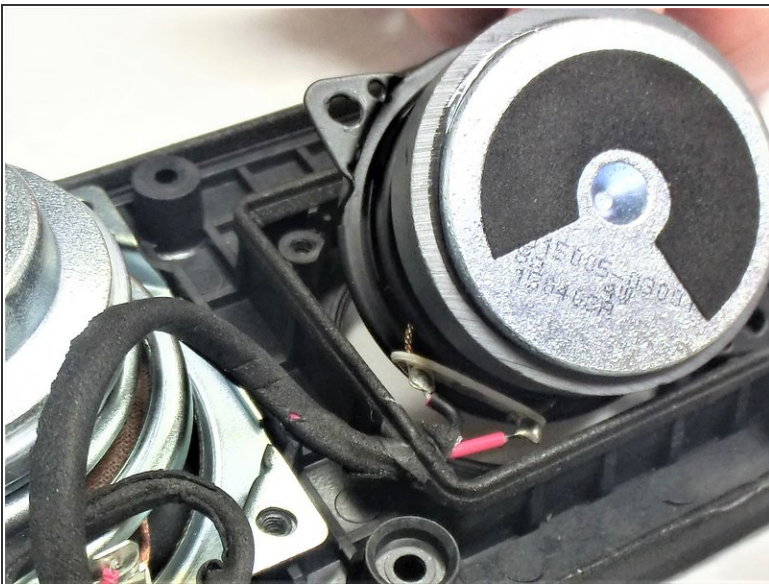
- Remove the 9 mm screws on the back of the speaker assembly using Phillips head #2 screw driver.
- Lift both speaker covers from the speaker assembly.

Step 11



- Remove the 6.3 mm screws holding each of the auxiliary speakers into the speaker assembly with Phillips head #2 screw driver.
- The speakers are magnetic so they will attract the screws.

Step 12



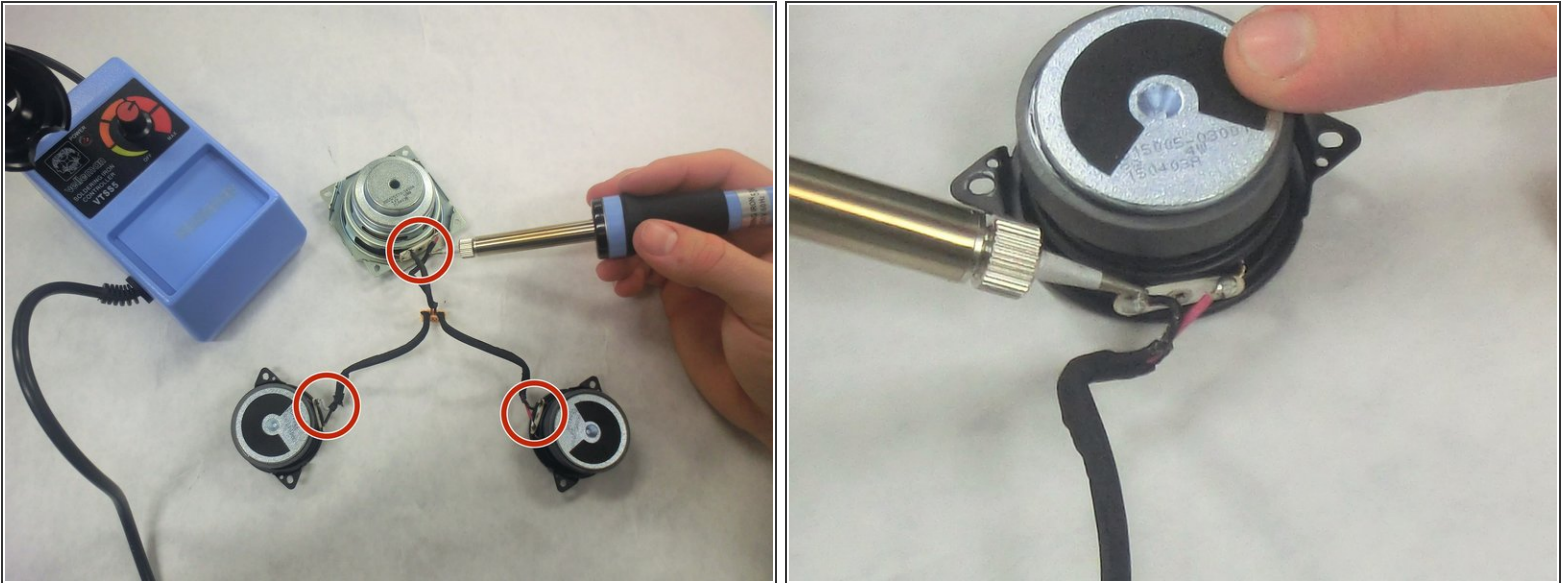
- Gently lift the auxiliary speakers from the speaker assembly.

⚠ CAUTION: Lift the auxiliary speakers slowly to prevent damaging the wires; they are held in place by a mild adhesive.

- Lift the sub-woofer from the speaker assembly.

This document was generated on 2022-06-23 08:02:52 PM (MST).

Step 13



- Place the tip of the soldering iron against the wire terminals until the connection separates on its own. The three terminal locations are shown.
- Reconnect the leads to the proper terminals. Use either of the other speakers as a reference if needed; they will have the same wire configuration.
- For step-by-step instructions on soldering check out this link [How To Solder and Desolder Connections](#).

To reassemble your device, follow these instructions in reverse order.