



# Sony Walkman NWZ-E353 Navigation Key Replacement

Use this tutorial to replace the 5 way navigation key on the Sony Walkman NWZ-E353

Written By: Dina Rafanomezantsoa

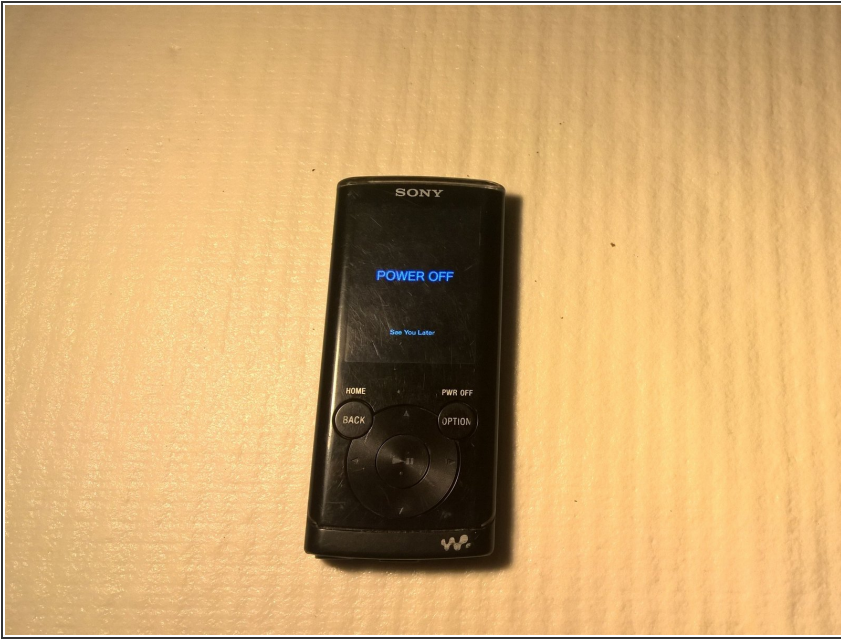




## TOOLS:

- [Phillips #00 Screwdriver](#) (1)
  - [iFixit Opening Tools](#) (1)
-

## Step 1 — 5-way navigation key



- Before you start, turn off your player.

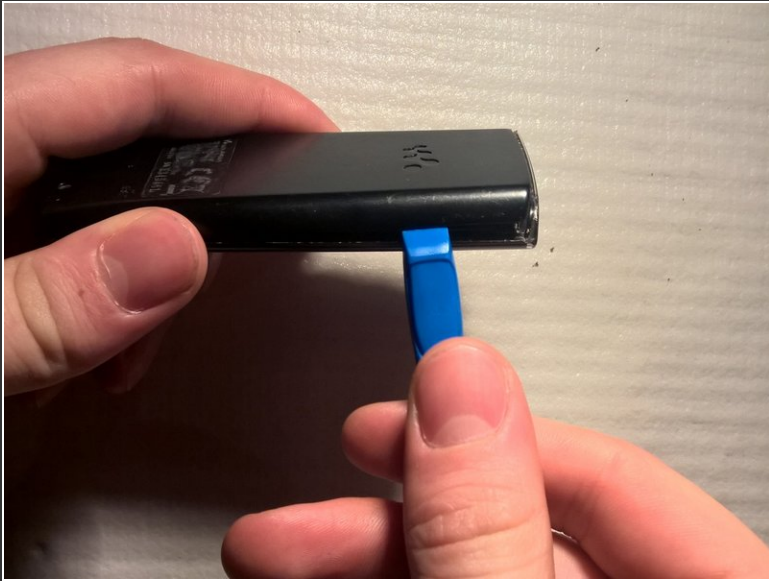
## Step 2



- Unscrew the two Phillips screws on the back of the drive.



### Step 3



- Use a plastic opening tool to pry on the edges of the drive.
- i** Once the cover is detached from the front panel of the player, be careful not to lose the volume key.
- i** Also be careful not to lose the small room below the Hold switch (see image 2)

### Step 4



- Remove the single Phillips screw that holds the front panel and the interior components of the drive.

## Step 5



- The interior components of the reader are held by 4 plastic clips.
- Be careful not to break them by removing the display assembly, battery and the motherboard.

## Step 6



- Remove the 5-way navigation key.

To reassemble your device, follow the instructions in reverse order.