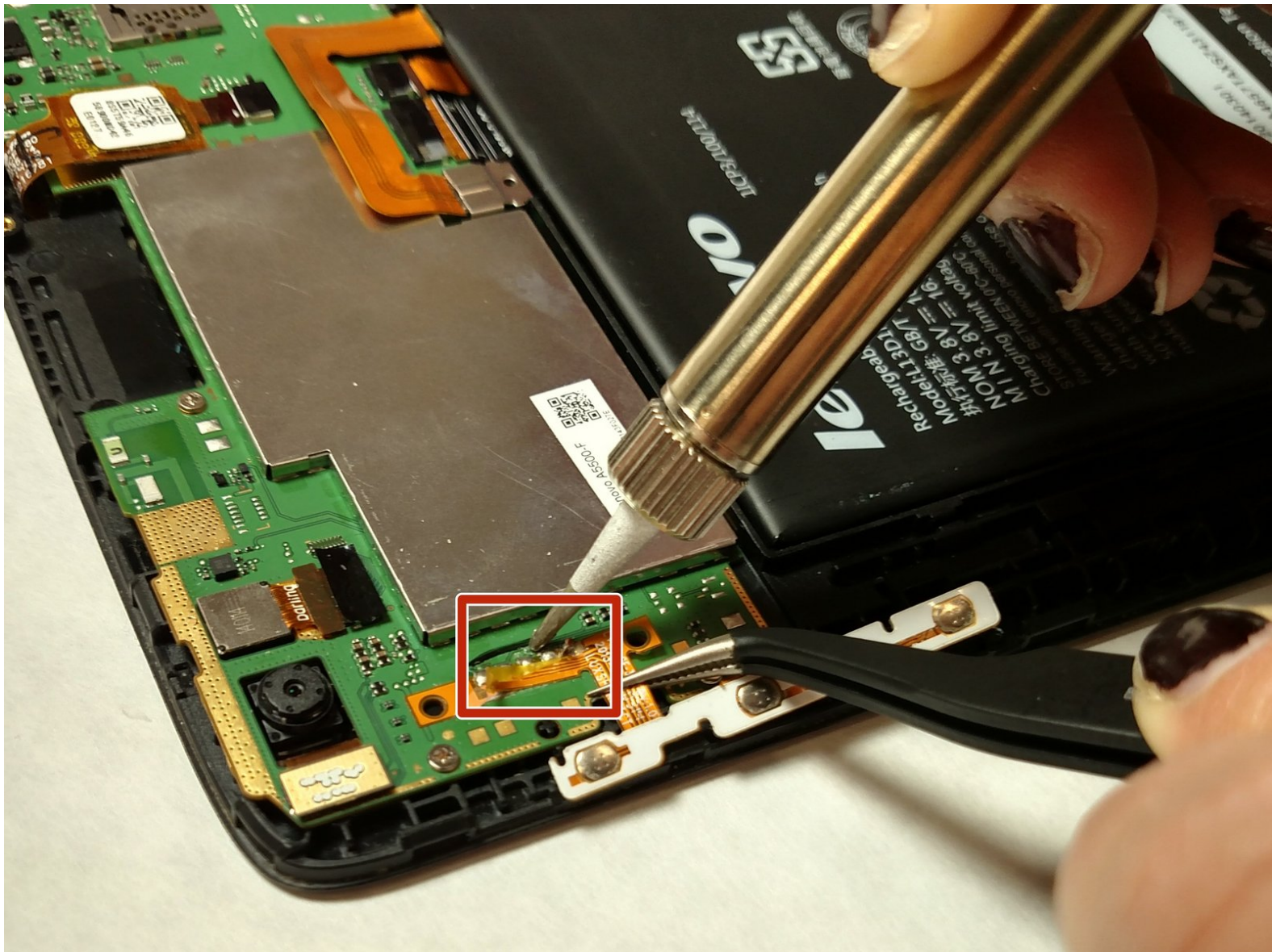




Lenovo Tab 2 A8 Volume & Power Button Sensor Replacement

Volume or power buttons not working properly when pressed? Read this guide to learn how to replace the volume and button sensors.

Written By: Taylor Smith



INTRODUCTION

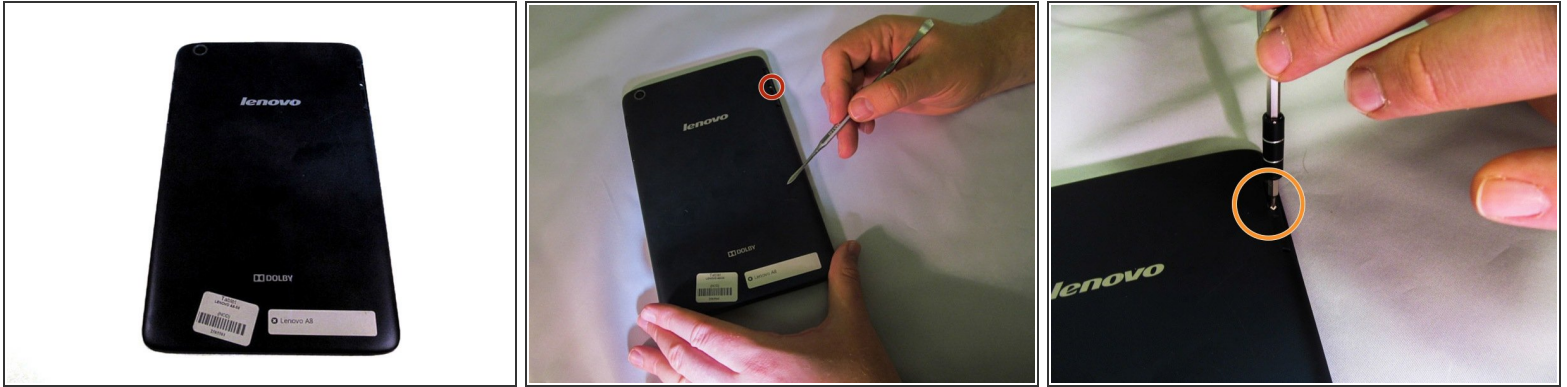
This replacement guide will describe how to remove the back cover on your device in order to access the volume and power buttons and button sensors. This guide also explains how to remove the existing button sensors before replacement.



TOOLS:

- [Tweezers](#) (1)
 - [Phillips #000 Screwdriver](#) (1)
 - [Portable Soldering Iron](#) (1)
-

Step 1 — Removing the Back Panel



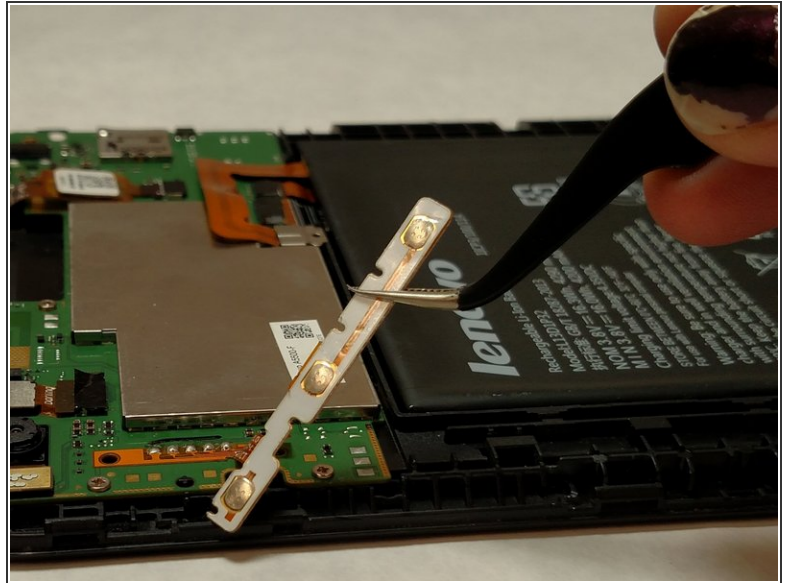
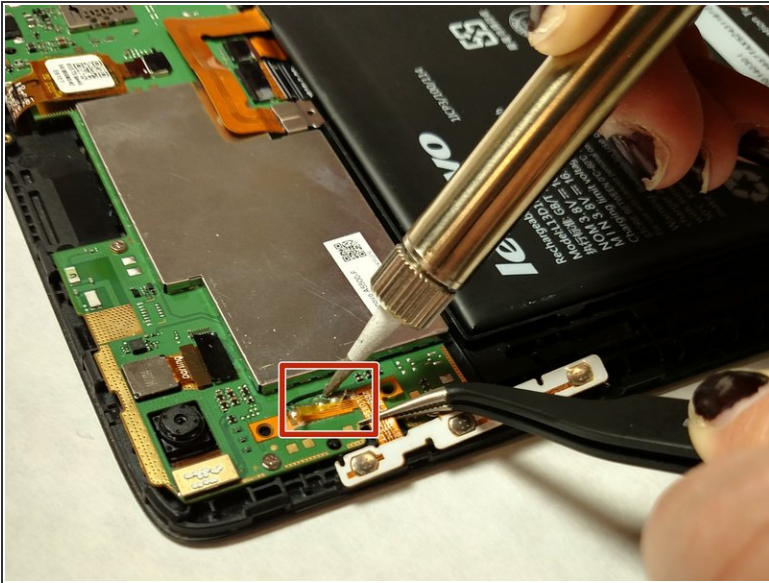
- Place the tablet face down on a soft, stable surface that will protect the screen.
- Next, Scrape off the seal over the screw in the back of the tablet with a Metal Spudger.
- Use the Phillips #000 Screwdriver to remove the M1.4 × 2.5 screw.
- ⓘ If the seal covering the screw has already been removed, please proceed to the next step in the process.
- ⓘ As the screw is small, you may wish to extract it using a pair of tweezers.

Step 2



- Starting on the side, work your way around the the tablet to pop off the back cover. You will want to utilize a metal Spudger for this.
- ⓘ Some force may be required initially to pry the back cover off.
- ⓘ Note that the button tabs for this device are loose inside the case and will fall out when opening.

Step 3 — Volume & Power Button Sensor



- Use tweezers to gently lift the button panel away from the device. Be aware that pulling on the ribbon with too much force could tear the ribbon cable.
- Carefully desolder the button strip contact point.

To reassemble your device, follow these instructions in reverse order.