



# Logitech M235 Teardown

A teardown of the Logitech M235 wireless mouse

Written By: Daniel



---

# INTRODUCTION

A teardown of the Logitech M235 wireless mouse

---



## TOOLS:

- [Essential Electronics Toolkit](#) (1)
-

## Step 1 — Logitech M235 Teardown



- Remove the battery and battery cover

## Step 2



- Remove the the two screws holding the cover.
- ⓘ I had two of these mice and one of them had a screw hidden under the CE sticker so make sure you check it out before opening the mouse apart

### Step 3



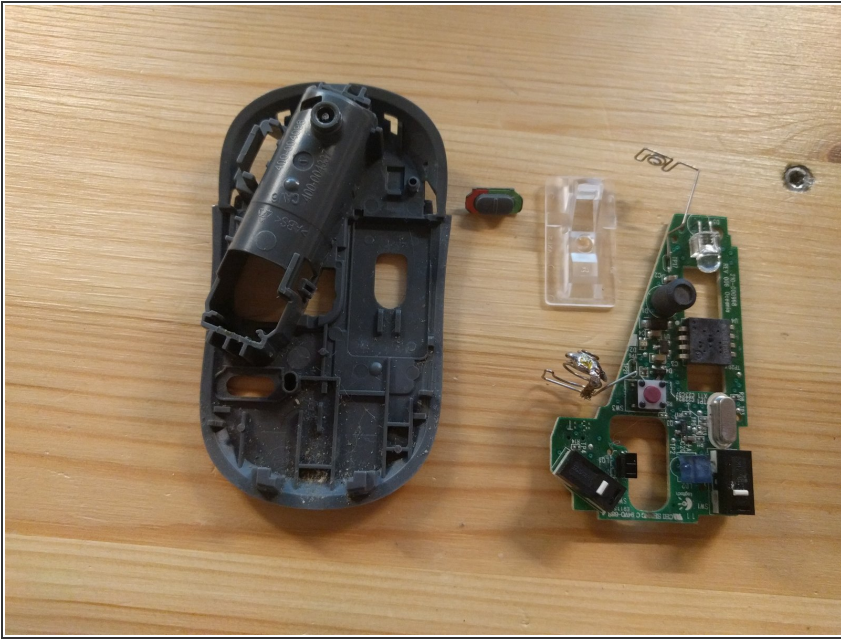
- Use a prying tool to split the mouse case apart.

### Step 4



- The case should be easy to open and not require much force.

## Step 5



- The PCB is only held by a few clips and can be easily removed.

## Step 6



- The top mouse cover can be removed by undoing three white clips holding it on the grey plastic part.

## Step 7



● Done!