



# Dyson V6 Motorhead Upper Housing and Brush Bar Housing Replacement

Clear cover that protects and houses the brushbar, susceptible to breakage overtime.

Written By: Addie Hedge



---

## INTRODUCTION

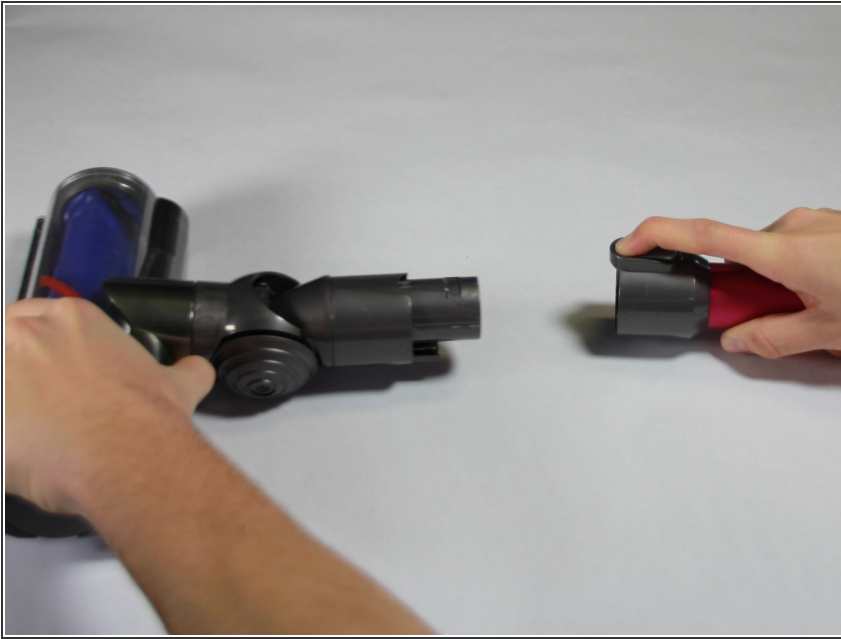
Connection tube and brushbar will need to be removed before replacement. Housing for the brushbar may be damaged and break overtime.



### TOOLS:

- [iFixit Opening Tools](#) (1)
  - [T8 Torx Screwdriver](#) (1)
  - [Coin](#) (1)
-

## Step 1 — Brush Bar



- Press the button to disconnect the vacuum head from the connecting pole.

## Step 2



- Turn the end cap counterclockwise using the iFixit Opening Tool.
- ⓘ If you do not have an iFixit Opening Tool, a quarter may be used instead.

### Step 3



- Pull the brush bar out of the housing.

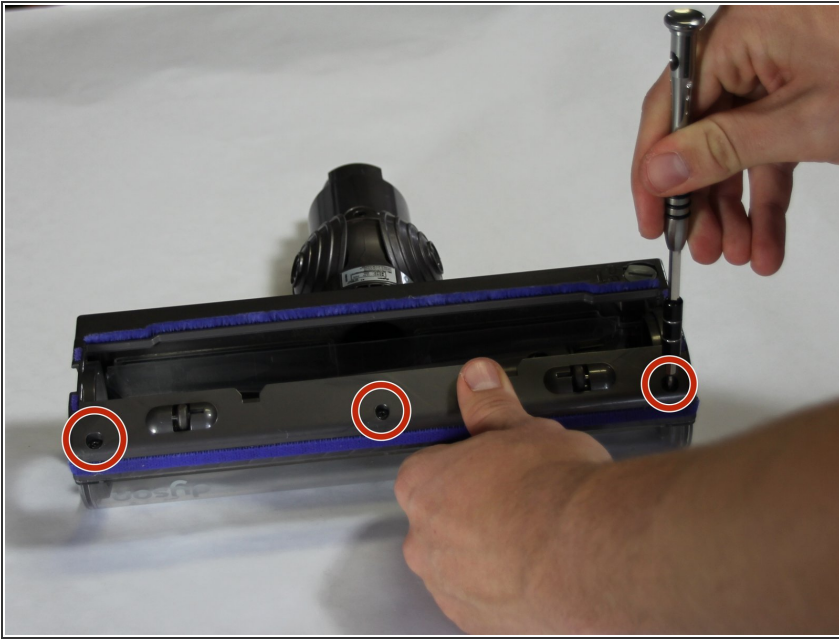
### Step 4 — Upper Housing and Brush Bar Housing



- Turn the padlock key counterclockwise using the iFixit Opening Tool.
- ⓘ If you do not have an iFixit Opening Tool, a quarter may be used instead.

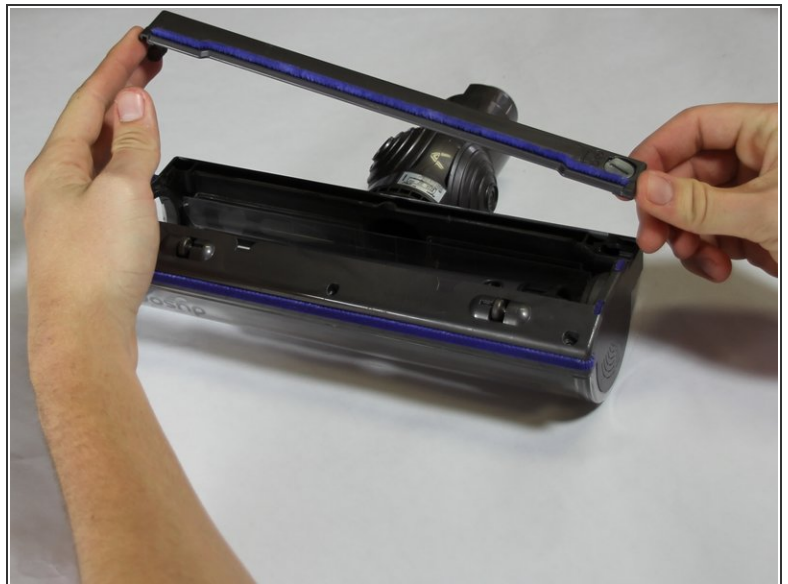


## Step 5



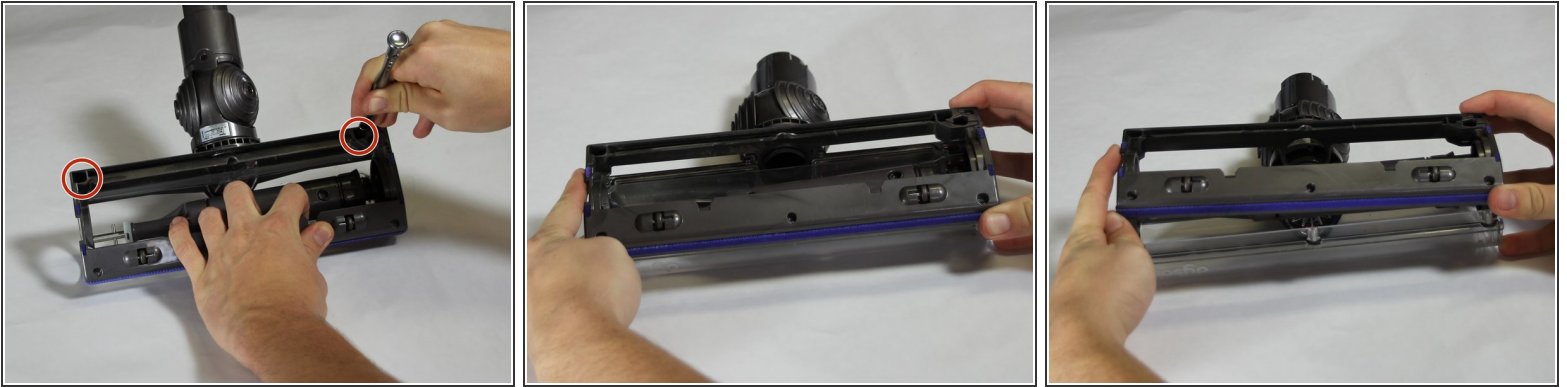
- Unscrew the three front 1.4 cm torx screws using the T8 Torx screwdriver.

## Step 6



- Remove the upper plate once the padlock is unlocked.

## Step 7



- Unscrew the top two corner 1.4 cm torx screws using the iFixit T8 Torx screwdriver.
- Remove axle and roller after the screws are taken out.

## Step 8




- Remove the drive assembly from vacuum housing.
- ⚠ Red wire connecting the drive assembly to housing.

## Step 9



- Pop off the circular plating to remove the housing from the connection piece.

 Red wire connects through the upper portion of the housing.

To reassemble your device, follow these instructions in reverse order.