



Garmin Nuvi 255W Battery Replacement

Installing a new Battery for the Garmin Nuvi 255W.

Written By: Timothy



INTRODUCTION

Use this guide to replace the battery in the Garmin Nuvi 255W.



TOOLS:

- [Phillips #00 Screwdriver](#) (1)
Screwdriver
- [iFixit Opening Tools](#) (1)
- [T5 Torx Screwdriver](#) (1)



PARTS:

- [Garmin Nuvi 200/205/250/255/260/265/270 Replacement Battery](#) (1)

Step 1 — Power Button



- Remove the barcode sticker at the bottom of the device.

Step 2



- Remove two 8.4 mm T5 screws from the bottom of the device.

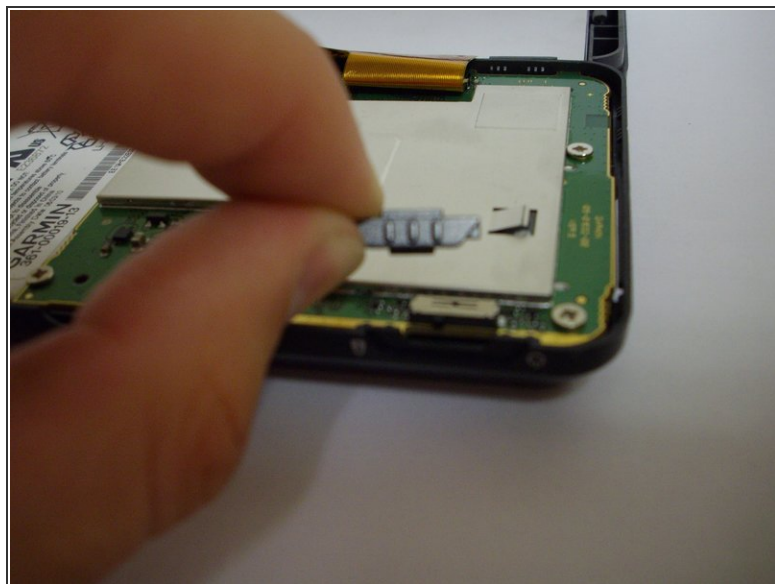
Step 3



- Using a plastic opening tool, carefully pry open the device.

⚠ Open the device carefully, making sure not to damage the gold ribbon cable that connects the screen to the motherboard.

Step 4



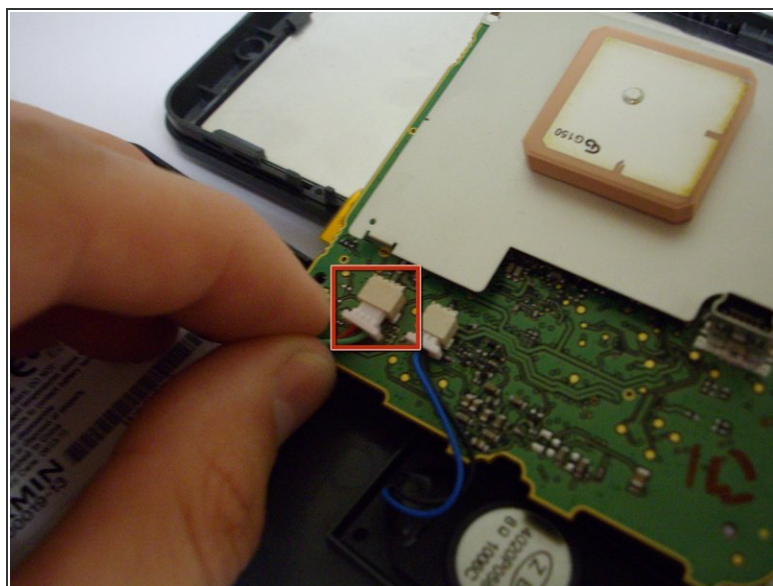
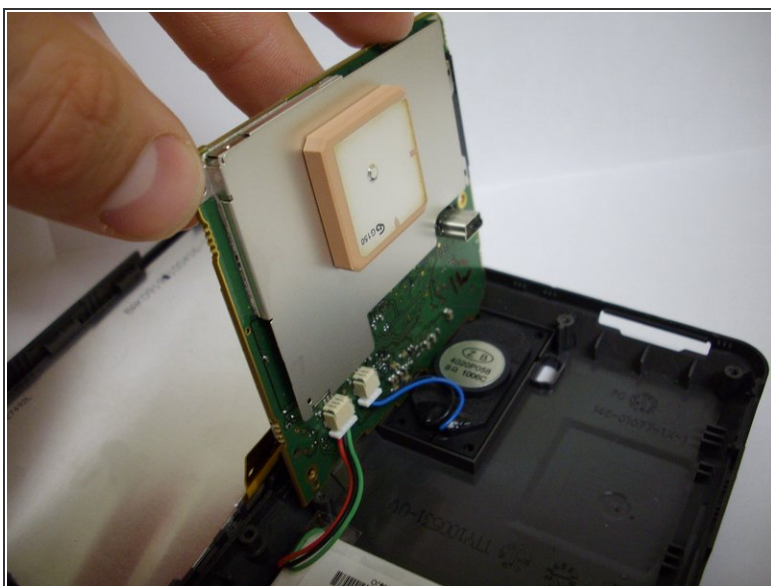
- Remove the power button.

Step 5 — Battery



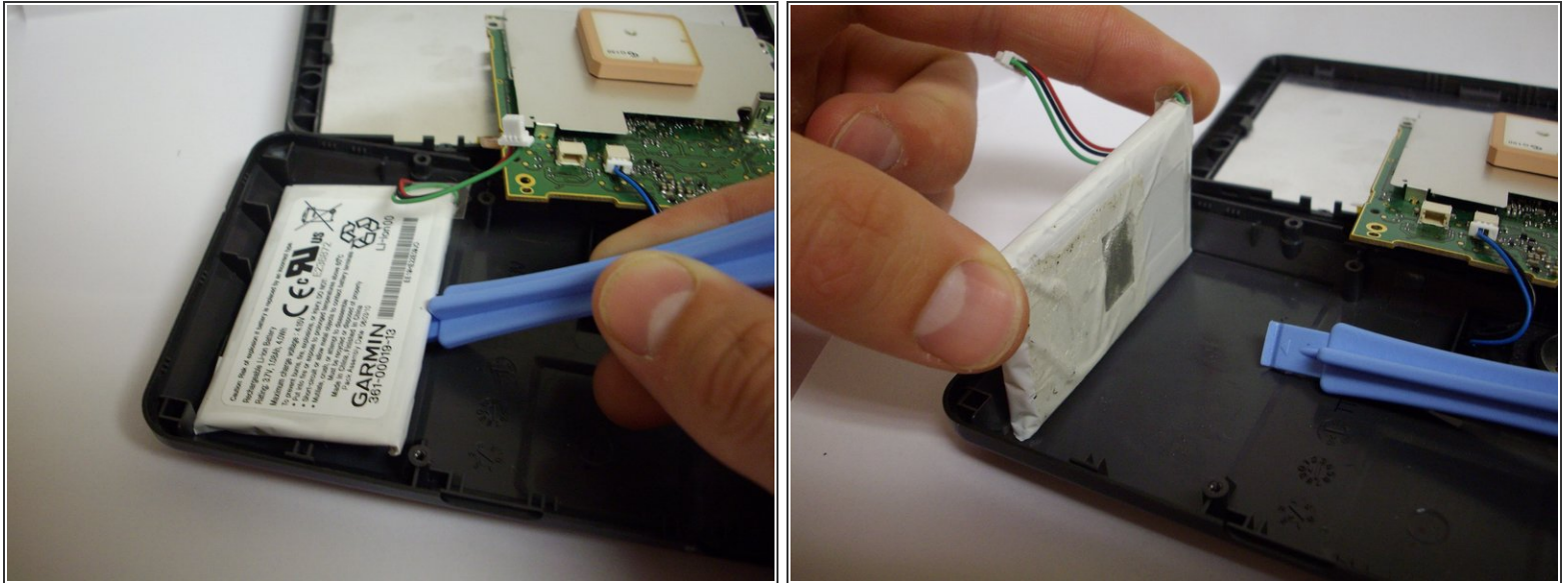
- Unscrew the four 6.70 mm screws holding the motherboard in place using a philips #0 screw driver.

Step 6



- Lift up the motherboard.
- Carefully disconnect the battery and motherboard. Slowly wiggling the connection makes it easier to disconnect the battery from the motherboard.

Step 7



- Using the plastic opening tool as a wedge, pry the battery from the case. This can be fairly tough as the battery is glued to the case. Don't be afraid to use force and some good leverage.

To reassemble your device, follow these instructions in reverse order.