



Renew Kärcher K3.68 MD E-Kasten

Instructions for the exchange of the Mainswitch. Guide shows the disassembly of the high pressure cleaner also.

Written By: Wolfgang



INTRODUCTION

High pressure cleaner can no longer switch off at the main switch or the Hand gun. Motor runs and runs and turn off only with the power-plug.



TOOLS:

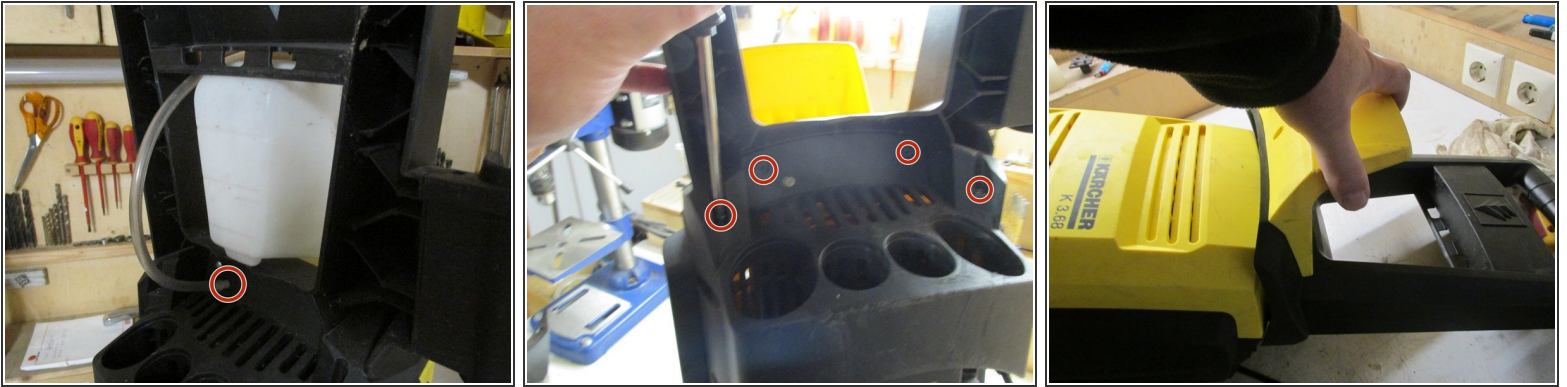
- [New Item](#) (2)
- [New Item](#) (1)
- [New Item](#) (2)
- [New Item](#) (1)
- [New Item](#) (1)



PARTS:

- [New Item](#) (1)

Step 1 — Remove handle element



- First, the detergent dispenser must be removed, to the hose at the marked position must be removed, turn the container by slightly be removed. Remove the handle Assembly to the marked cross-head screws must be unscrewed, then the handle element can be pulled off to the front.

Step 2 — Remove bumper



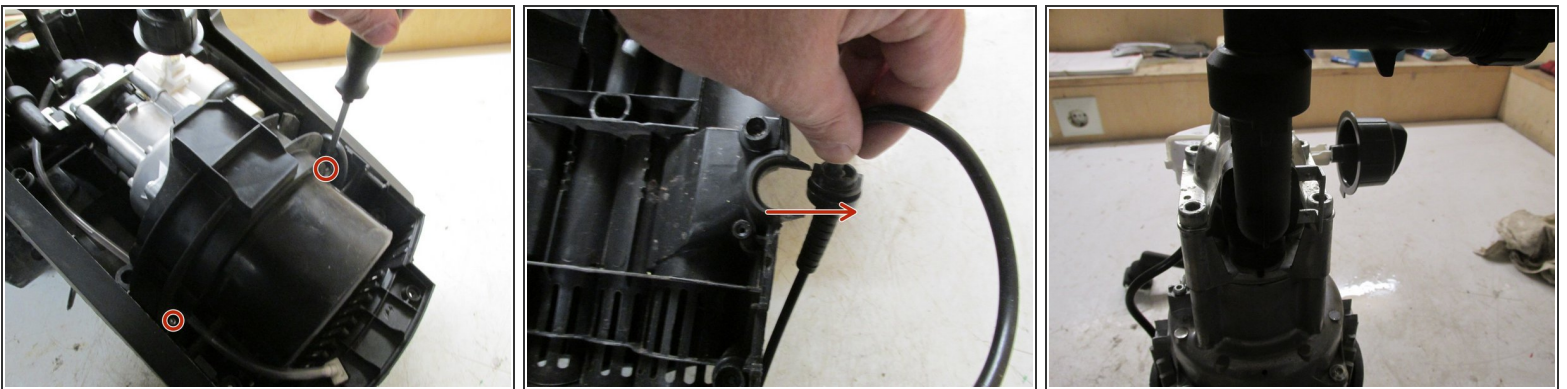
- Remove the four marked Torx TX16 screws, then remove the screws from the small side cover. The small lid can be removed then sideways. He is fitted on one side, this is done the bumper can be removed.

Step 3 — Remove yellow Front Cap



- To disassemble the yellow front hood 6 cross head screws must be removed on the back. Also at the bottom, in the middle and on top. To reach the middle screws a 110 mm long screwdriver is necessary. Turn the device and the yellow lid can be removed .

Step 4 — Remove the motor unit



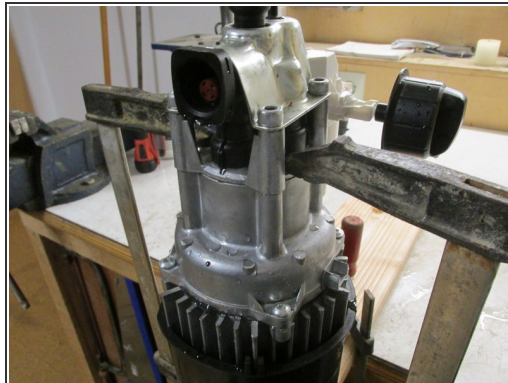
- Unscrew the Screws of the motor holder flange and remove the flange, then the strain relief of the cable from the mounting brackets side out, so that the engine is now freely be removed

Step 5 — Remove the water connectors



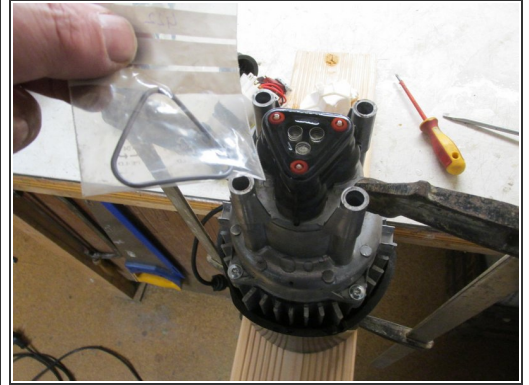
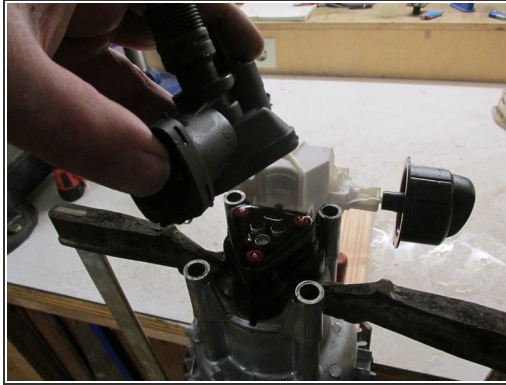
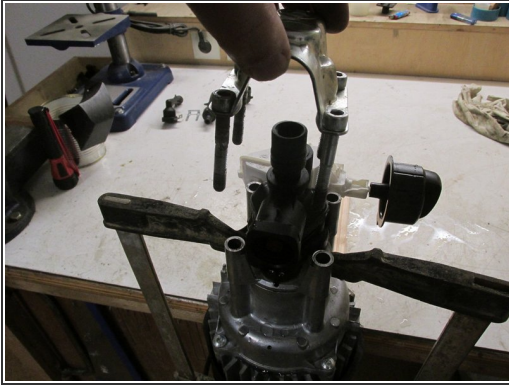
- Remove the securing clips to remove the suction connection and the connection of the pressure side, then the ports can be situated. The inlet side goes out somewhat hard, there must be a little.

Step 6 — Building a holder for GeradSschubführung



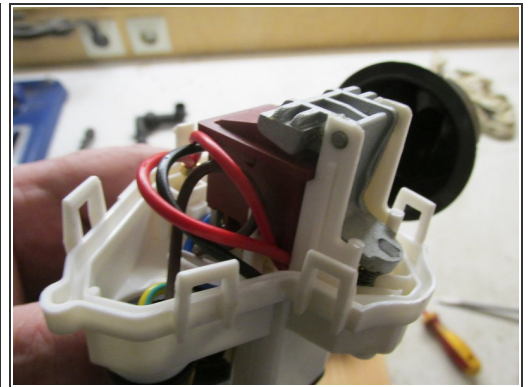
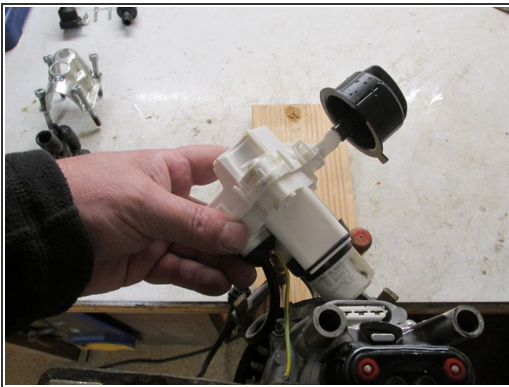
- This step is important because, if the top metal bracket is removed without backup, the whole pressure springs of the thrust management come out and it will be very difficult to get them back together. I've taken long two screw clamps holding together the lower straight thrust Guide

Step 7 — Remove the control box



- Loos the four 6 mm Allen bolts and remove the metal lid, then the head carefully remove because among them are also feathers. If necessary also the seal (90814220) can be changed in this context

Step 8 — Refer to E box



- The E-box can now be pulled off upwards. The protective earth conductor must be unscrewed from the housing. You can disassemble the E box also by pushing on the clip mounts and the hood then away, how to get on the inside. The E-box comes just completely, so that it can then be replaced

In order to turn the screws of the hood to sitting very deep, again, it is advisable to magnetize the screwdriver.

Since I had more problems with my Kärcher I unfortunately have to say that the quality could be better. Shortly after the warranty period, the control unit got a crack so I also had to replace this. In addition, the spare parts prices are quite high.

There are spare parts here:

<http://www.Kaercher-ersatzteile-Schreibe...>