



Logitech K750 keyboard disassembly guide

Remove the keyboard for internal cleaning something deeper than outside.

Written By: Miguel Cretu



INTRODUCTION

Half disassemble the keyboard for deep cleaning.



TOOLS:

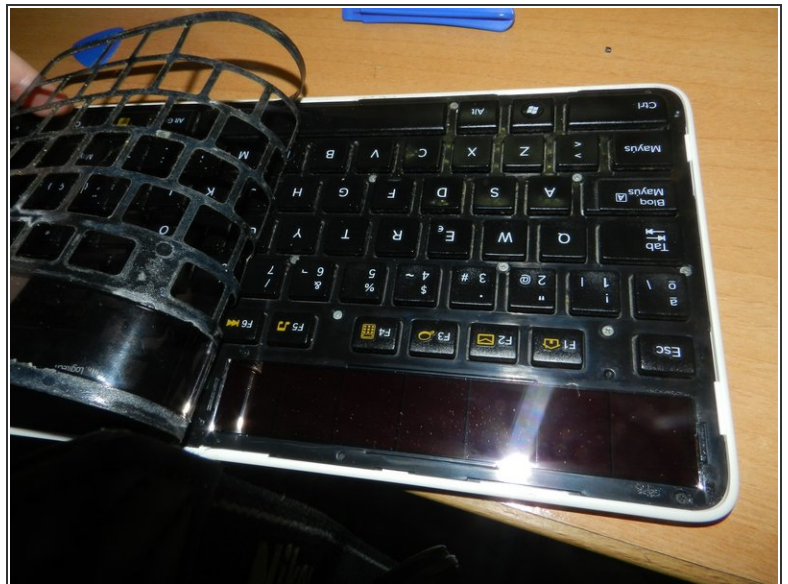
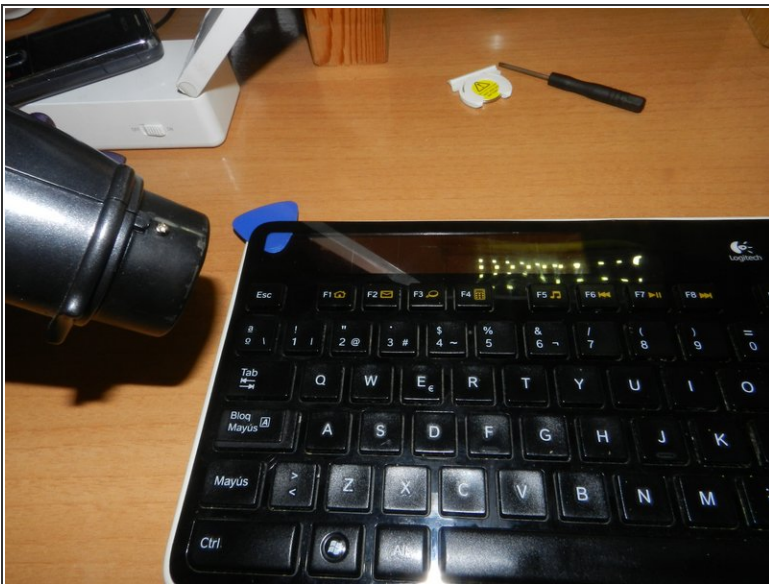
- [New Item](#) (1)
 - [New Item](#) (1)
 - [New Item](#) (1)
-

Step 1 — remove the battery




- Carefully remove the battery by levering it with a flat screwdriver

Step 2 — Heat the cover.

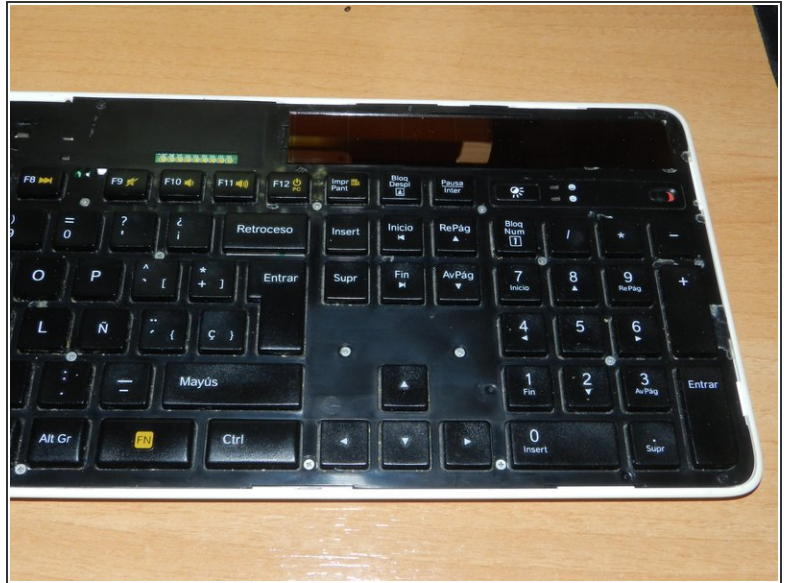
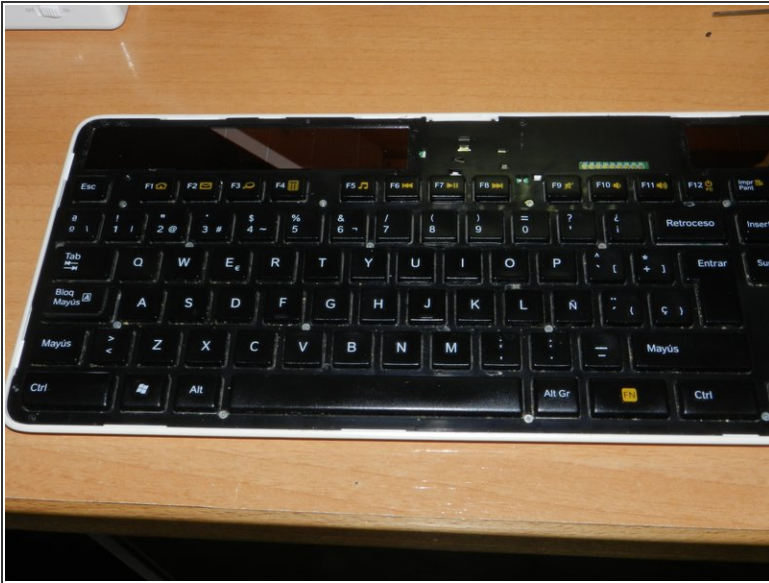


- With a hair dryer, heat the cover and pull little by little with your hand so as not to break it.

 Note: Some marks may appear on the plastic if it is pulled incorrectly.

 Do not heat excessively

Step 3 — Remove Cover



- After removing the cover, the screws are visible

Step 4 — Unscrew



i Note: Consider placing the screws in the same order that they have on the keyboard to help you with the reverse process later.

- Unscrew the 28 "PHILIPS" screws, order according to output order as they have different heights and diameters.

Step 5 — Last step



- Carefully pry up the tabs around the keyboard body. Between the F8 and F9 keys there is another tab. To open it, raise it a little from below and lever it with the screwdriver, as if we were going to screw.

Step 6 — Final




- Once the previous steps are completed, we would find the keyboard half disassembled.

⚠ Warning: Be careful to center the plastic cover on the keyboard perfectly.

Step 7 — Mounting



-  To reassemble it, follow the same steps in reverse. Watch out for the plastic, it has to be completely centered.

Recommended to remove that dirt that remains between keys, and that cannot be easily removed, it is very easy to do, and with simple tools.