



# LG Notebook LGC40 A410 WiFi module Replacement

Shows how to replace the WiFi module

Written By: Claudio Felix



---

## INTRODUCTION

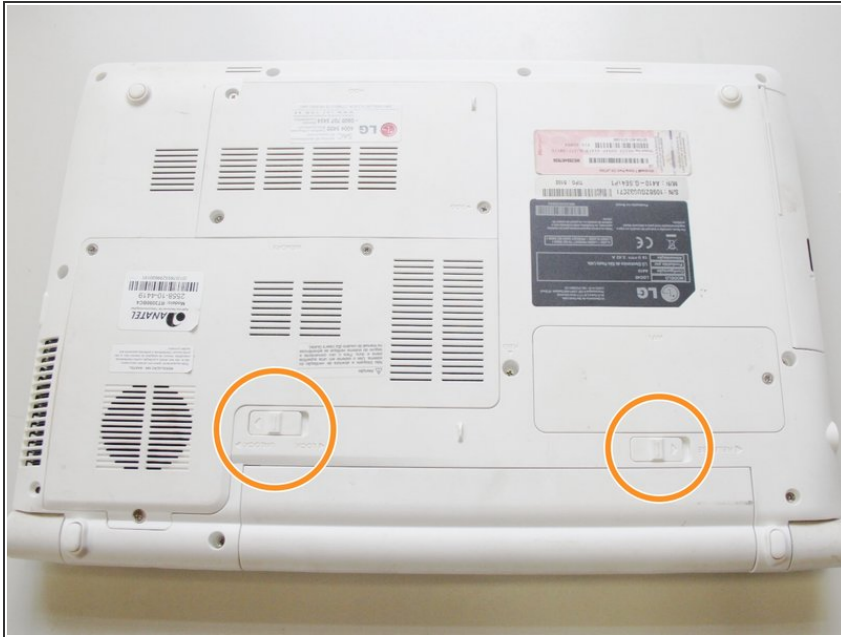
Shows how to replace the WiFi module



### TOOLS:

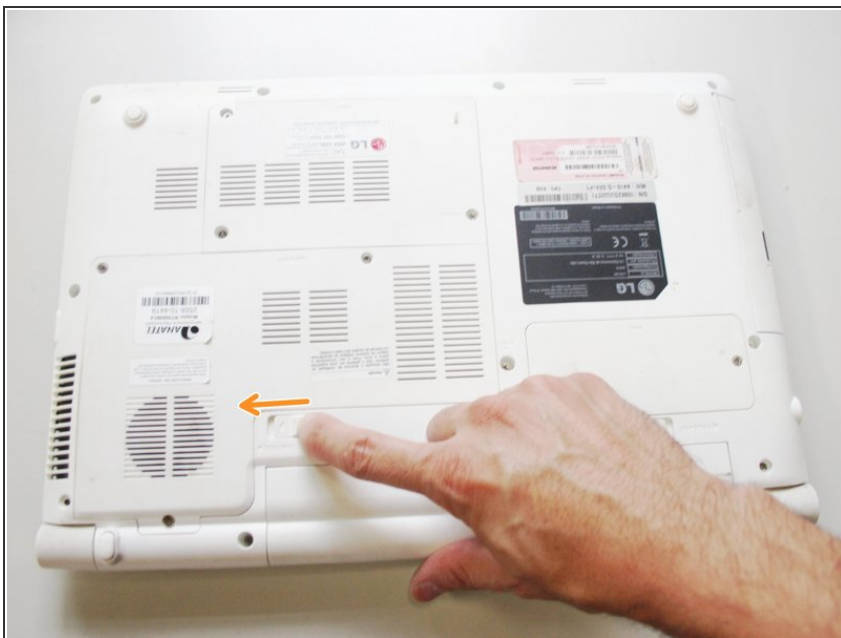
- [Phillips #1 Screwdriver](#) (1)
-

## Step 1 — Locate the keys to unlock and release the battery



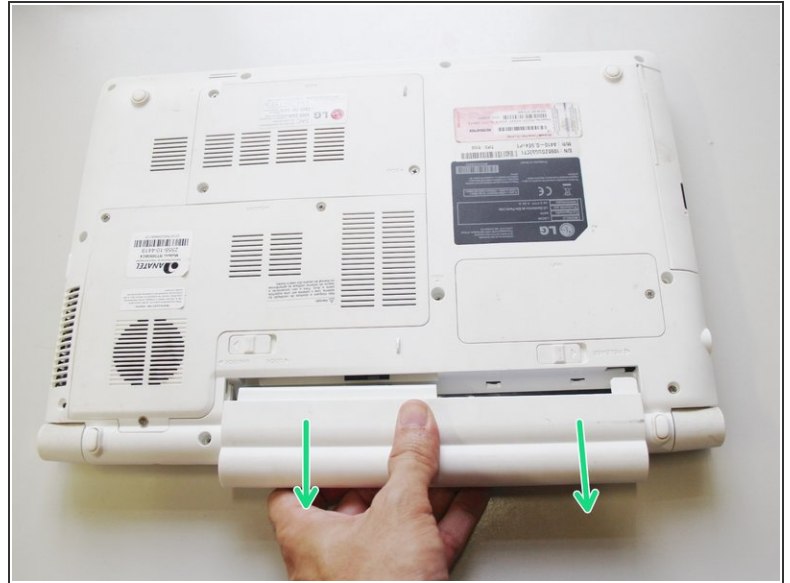
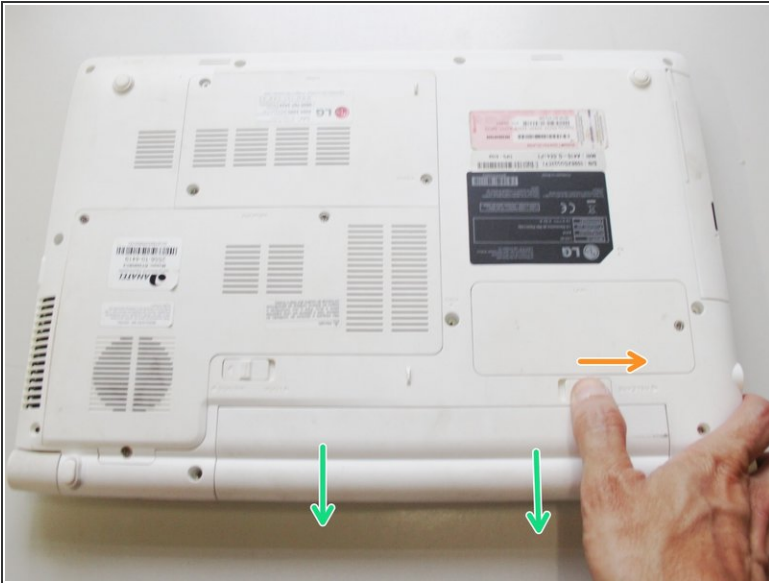
- Put the notebook upside down, preferably on top of a soft surface so any movement doesn't scratch the top cover.
- Locate the keys to unlock and release the battery

## Step 2 — Unlock the battery



- Slide the unlock key in the indicated direction to unlock the battery

### Step 3 — Release and remove the battery



- Slide and hold the release key in the indicated direction
- Pull out the battery

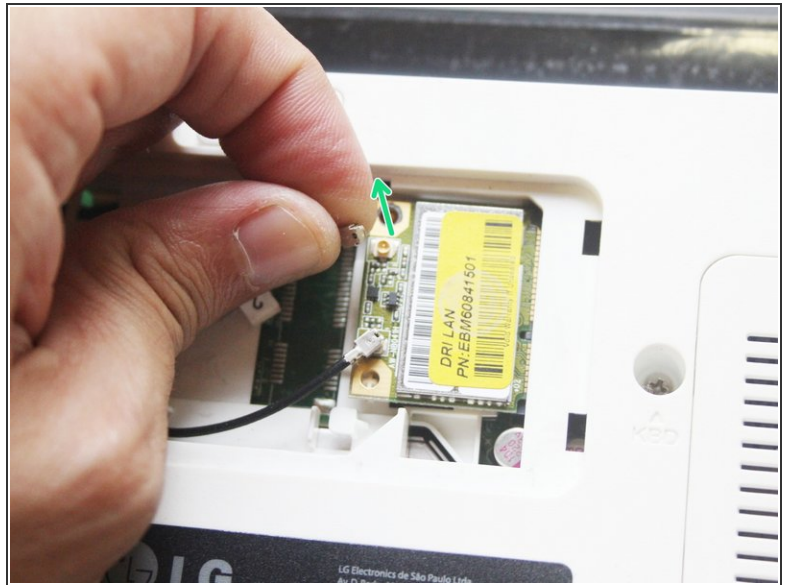
### Step 4 — Remove the WiFi module cover



- With the notebook upside down, locate the WiFi module cover and unscrew the philips screw.



## Step 5 — Remove the antenna connectors



- Locate the antenna connectors on the WiFi module
- Holding the antenna connectors with the tips of your fingers, carefully pull them out of the WiFi module board.

## Step 6 — Remove the WiFi module



- Remove the Philips screw
- Lift the WiFi module by the edge where the screw is located
- Pull the WiFi module from the motherboard connector

To reassemble your device, follow these instructions in reverse order.