



Logitech R400 Presenter Disassembly

Short disassembly instructions for the R400 Presenter

Written By: Stephan



INTRODUCTION

Quick and easy disassembly of the presenter.

I ended up breaking a part, but it does not seem to be needed...

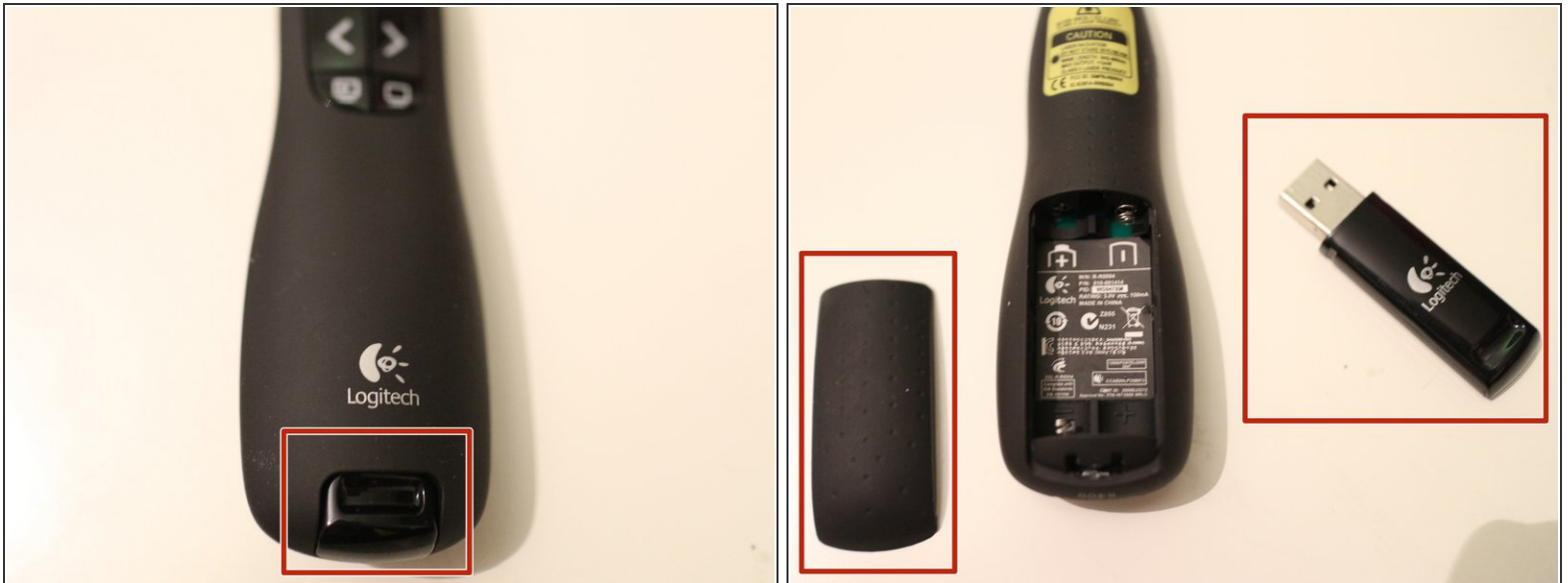
Should be similar for the R700 & R800, but I don't have one...



TOOLS:

- [Phillips #0 Screwdriver](#) (1)
 - [Flathead 3/32" or 2.5 mm Screwdriver](#) (1)
-

Step 1 — Remove the unnecessary parts



- Remove the USB-Receiver.
- Open the battery compartment.
- Remove the batteries.

Step 2 — Remove the sticker



- To remove the sticker that's covering the next screws, I used a small slot screwdriver and carefully inserted it at the shown position. There is a little notch here that guides you in.

Step 3 — Remove 2 screws



- Below the sticker we have two Philips screws (red). Unscrew them.
- Edit according to Simon (see comment): In the yellow slot there is a tab that is to be pushed down to unlatch it. If you insert a pick in the seam between the top and the bottom half of the device it should open easily when downward pressure is applied to the latch..
- Now carefully pry apart the two halves of the cover, starting from the side of the battery compartment.

Step 4 — Just another screw.



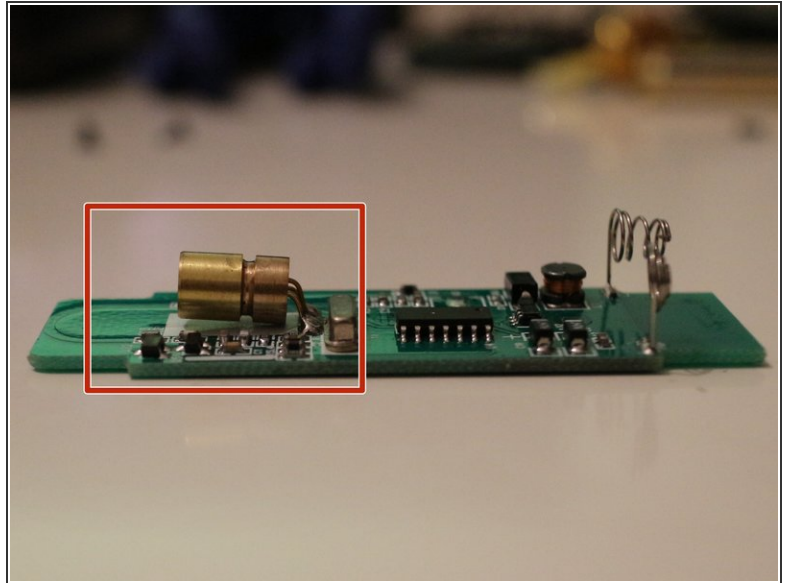
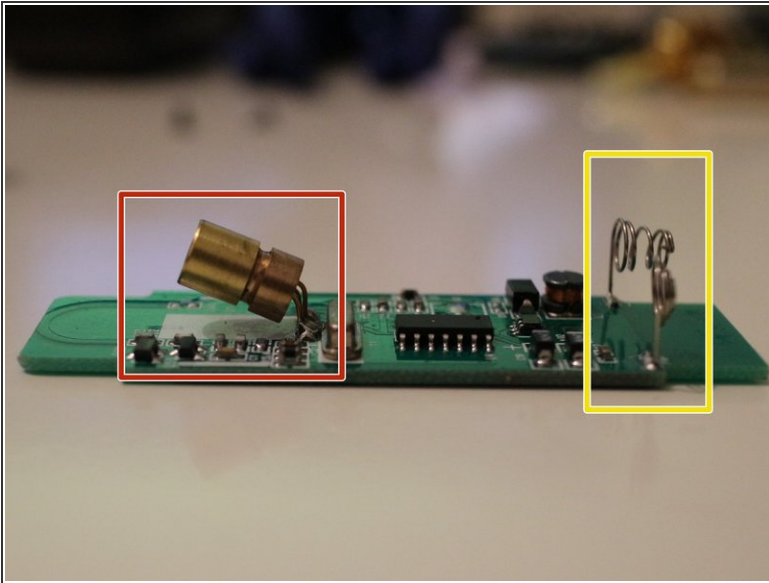
- The green board is where all the application logic is in, so don't scratch it.
- There is one single screw. Unscrew it.
- Carefully take out the green board. The connectors for the batteries are attached here, don't break them (though they are quite sturdy). Step 6 has an image how the board looks from the other side.

Step 5 — Finished



- This should be the end product.

Step 6 — Not actually part of the disassembly...



- The reason why I disassembled my presenter was, that the laser diode (red) did not project out of the case any more. You can clearly see the laser being at a very odd angle. I can not imagine how that happened.
- The yellow marker shows the battery connectors you are not supposed to break in step 4.
- In the last image you see the "fixed" laser diode. I just gently pushed it down, now it's working again.

To reassemble your device, follow these instructions in reverse order.