



GATEWAY ML6720 Keyboard Replacement

This repair could help you save hundreds of...

Written By: Nathan Da Silva



INTRODUCTION

This repair could help you save hundreds of dollars on key installments. The GATEWAY ML6720 Keyboard replacement can resolve unresponsive keys or prevent keys from sticking down.

This guide will help you with the tool required (listed on the right) by looking under the “what you need” section.

TOOLS:

Phillips #00 Screwdriver (1)

Step 1 — Battery



- Flip the laptop on to the backside.

Step 2



- Locate the battery at the very top on the backside of the laptop.

Step 3



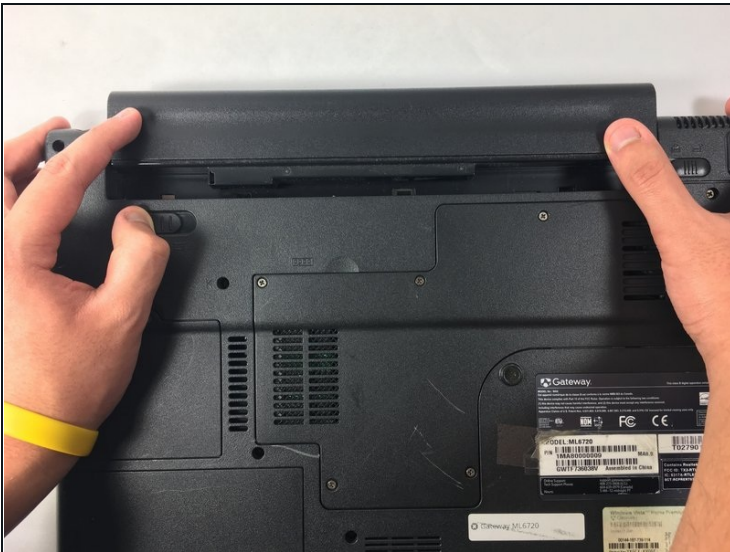
- Slide the latch in the top right corner to the right, to set it to unlocked.

Step 4



- Hold the other latch in the top left corner to the left.
- Hold it in that place with your thumb until the completion of the next step. (This step unlocks the second latch.)

Step 5



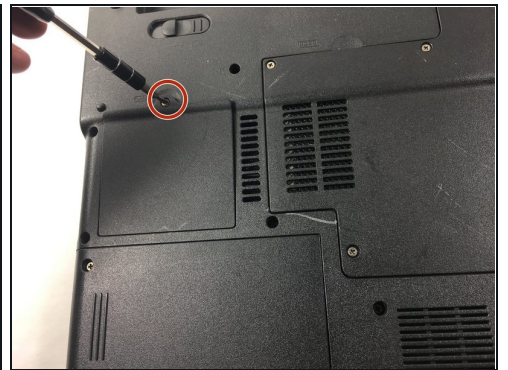
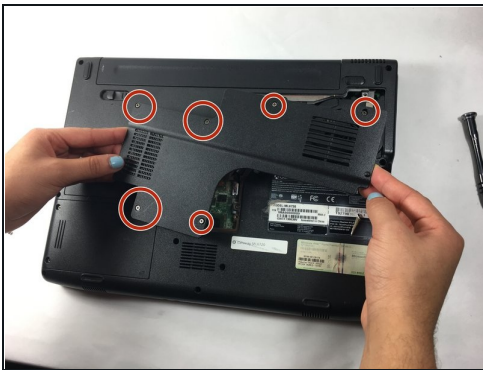
- With both latches unlocked you can now slide out the battery, by pushing it off the top.

Step 6 — Keyboard



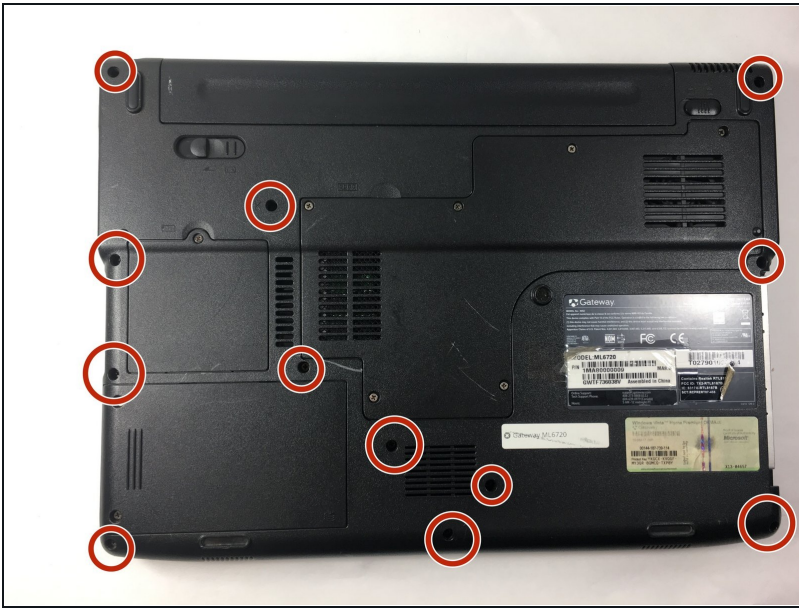
- Turn the laptop on its backside with the stickers and barcode facing you.

Step 7



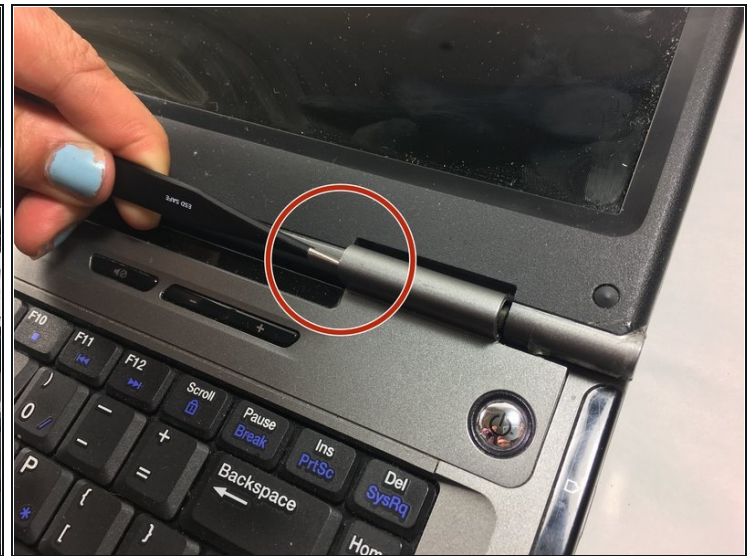
- Be careful of losing the screws because of how small they are
- Remove the six 2.0mm Phillips screws and panels from the back of the RAM, motherboard, and laptop fan.

Step 8



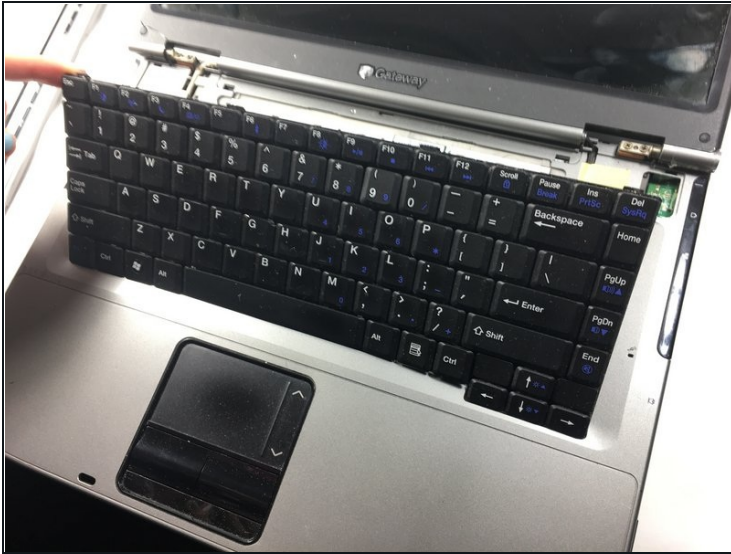
- Have your laptop remained on the backside
- Remove the twelve identical 2.0mm Phillips Screws located around the back of the laptop using the Phillips #0 Screwdriver.
- Remove the entire back panel of the laptop

Step 9



- Using a pair of tweezers or the tip of your screw driver, dig into the laptop cover and apply force to pop it out.
- Do this on the left and right side of the cover

Step 10



- Pull up the keyboard with your finger

To reassemble your device, follow these instructions in reverse order.