



How to repair the foot pedal (spring)

This guide will help you replace the spring inside the foot pedal, you will need a phillips screwdriver and an all purpose wrench.

Written By: Barrie van der Goes



INTRODUCTION

This guide will teach you how to remove the casing, remove the pin of the pedal and replace the spring for the pedal. You will need a medium sized Phillips screwdriver and an all-purpose wrench (although any small flat wrench will work).



TOOLS:

- [Combination Pliers](#) (1)
 - [Phillips #1 Screwdriver](#) (1)
-

Step 1 — Pedal Spring



- Turn over the EC20.
- Unscrew all 7 screws on the back.

Step 2



- Put the EC20 on its side and put your thumb on the edge.
- Place your other thumb on the jack input.
- Pull them apart and slightly open the case.

Step 3



- Turn the EC20 around and place your thumb on one of the knobs.
- Place your other thumb on the bottom edge where part of the casing sticks out.
- Pull them apart, you should now be able to open the casing completely.

Step 4



- Push the rod out by using the screwdriver as a lever.
- Pull out the rod with the wrench on the other side.

Step 5



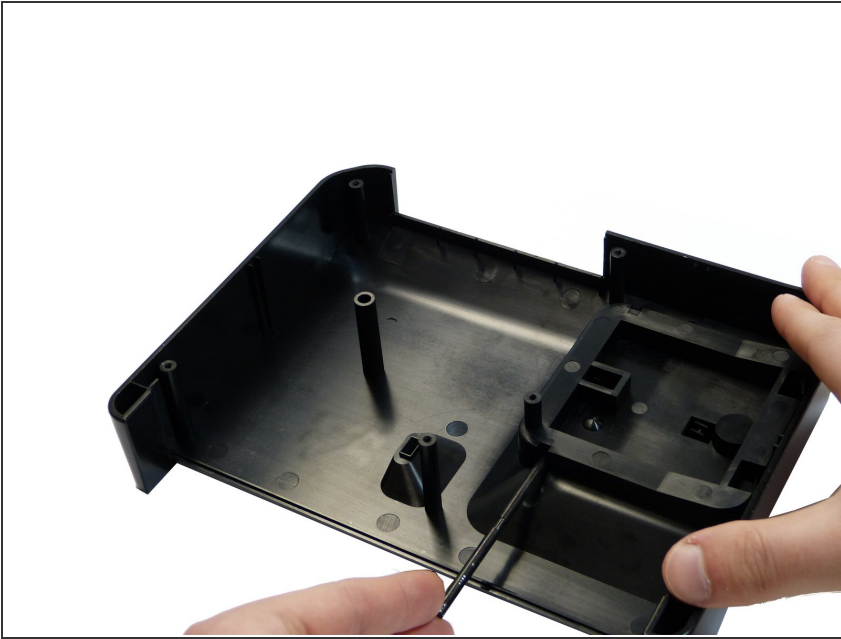
- Turn around the upper casing.
- Grab the pedal and pull it out of the casing.

Step 6



- Push the spring back in position on the ring.
- Put the pedal back in the casing.

Step 7



- Push the rod back in position.

Close the casing again and fasten the casing with the screws. You have now successfully replaced the spring!