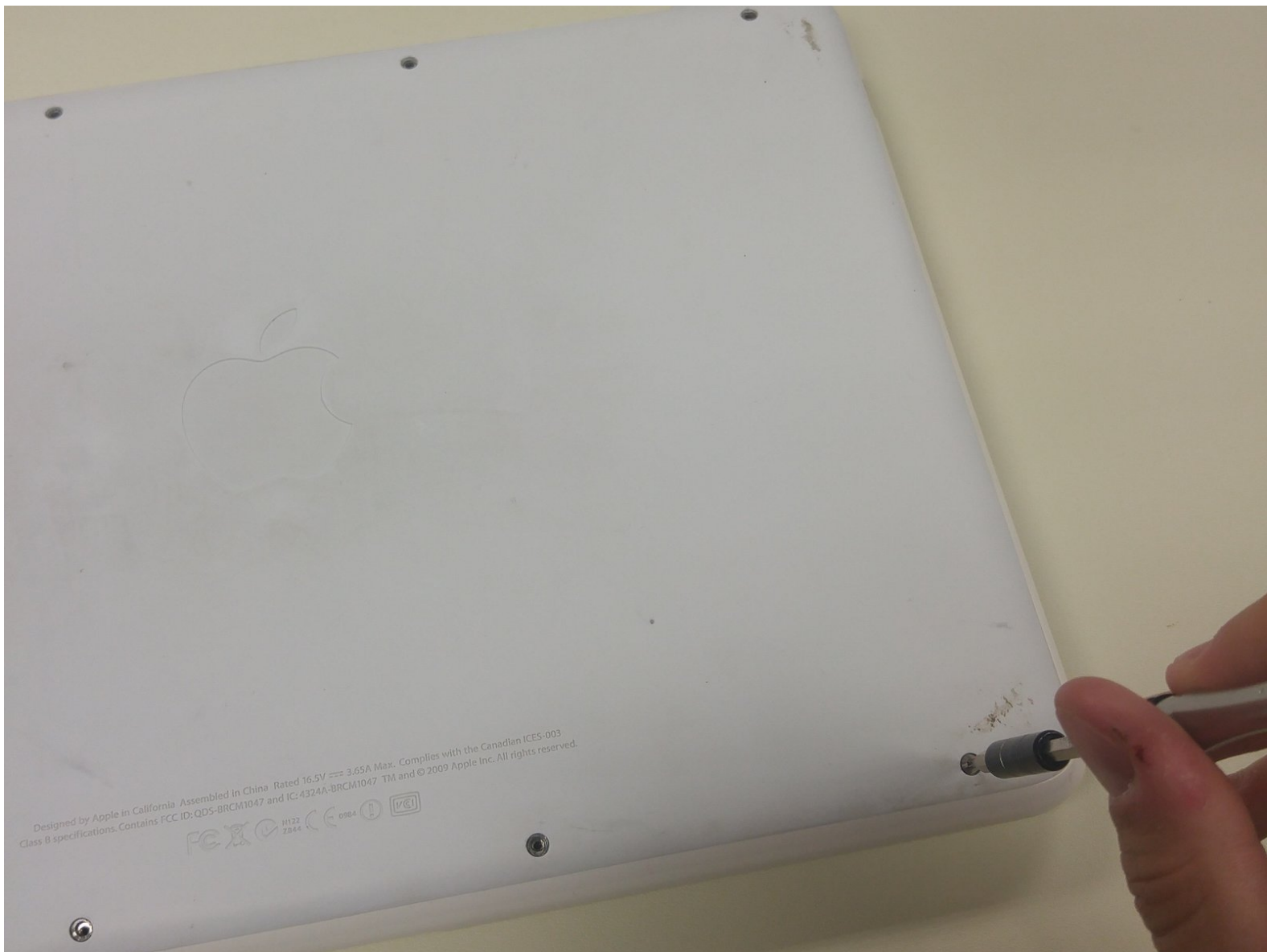




MacBook Unibody Model A1342 Disassembly

In this guide we will cover how to remove and replace the hard drive and RAM in a Macbook Unibody Model A1342.

Written By: Bob McBoberface



INTRODUCTION

First, we will remove the two 1GB RAM sticks. Then, we will remove the stock 500GB, 5400 RPM HDD.



TOOLS:

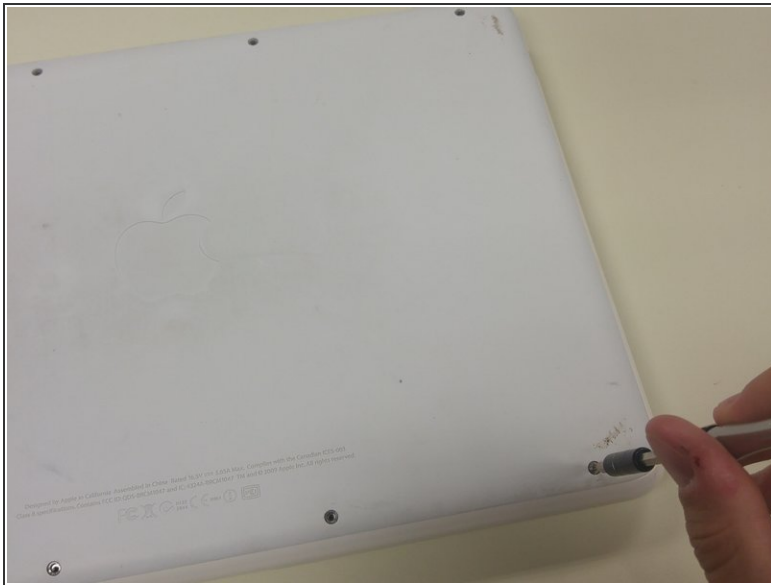
- [Phillips #00 Screwdriver](#) (1)
- [Spudger](#) (1)



PARTS:

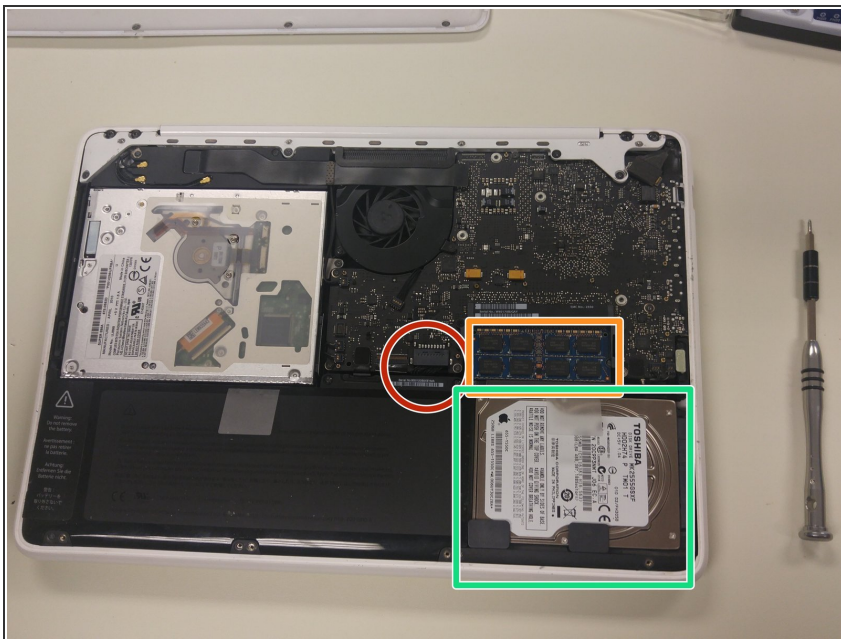
- [PC3-8500 1 GB RAM Chip](#) (2)
- [Toshiba MK2555GSXF 250GB SATA/300 5400RPM 8MB 2.5" HDD](#) (1)

Step 1 — Lower Case



- Using a PH00 bit, remove the eight 4 mm Phillips screws securing the lower case to the MacBook.

Step 2 — Identify



- Identify the parts we need to remove. Start with unplugging the battery (circled in red), followed by

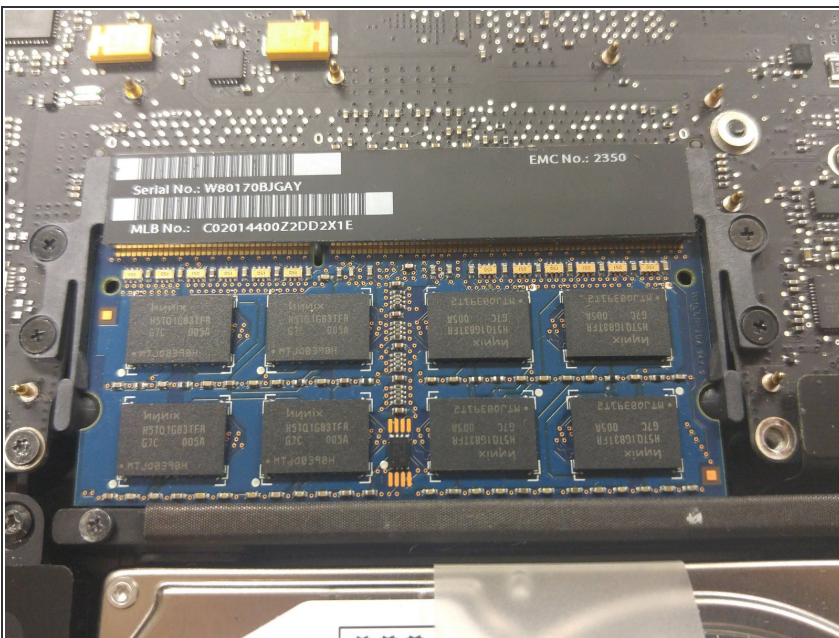
removing the RAM sticks (circled in orange), and lastly removing the hard drive (circled in green).

Step 3 — Unplug Battery



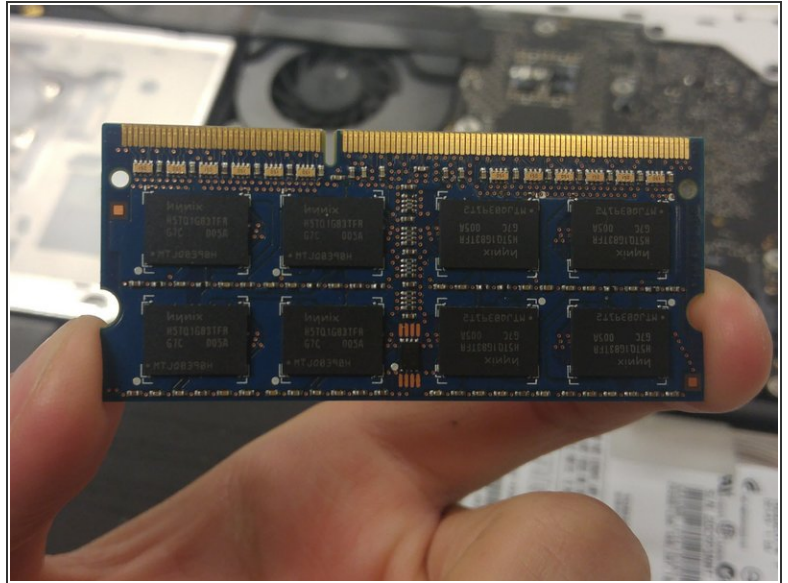
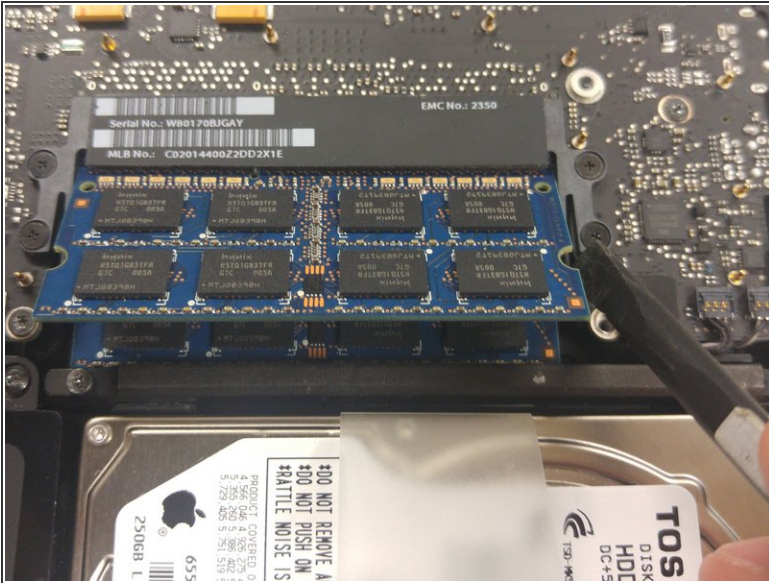
- Use the flat end of a spudger to lift the battery connector up out of its socket on the logic board.

Step 4 — Remove RAM



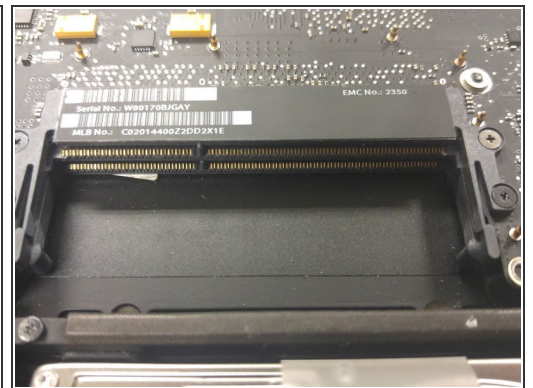
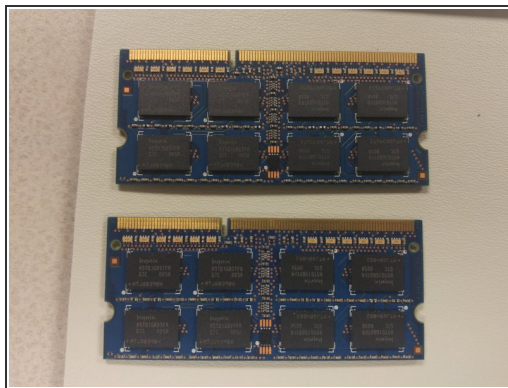
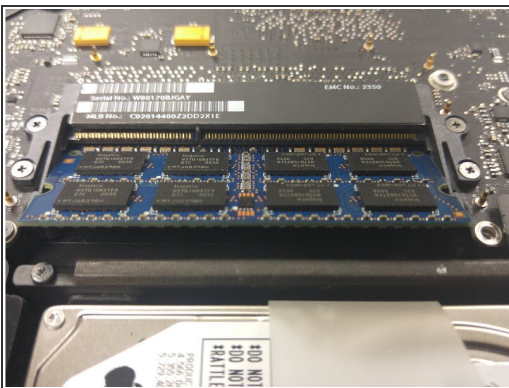
- Release the tabs on each side of the chip by simultaneously pushing each tab away from the RAM.

Step 5 — RAM cont.



- After the RAM chip has popped up, pull it straight out of its socket.
- BE SURE TO HANDLE THE RAM STICK BY THE EDGES. DO NOT TOUCH THE CIRCUITRY.

Step 6 — Second RAM Stick



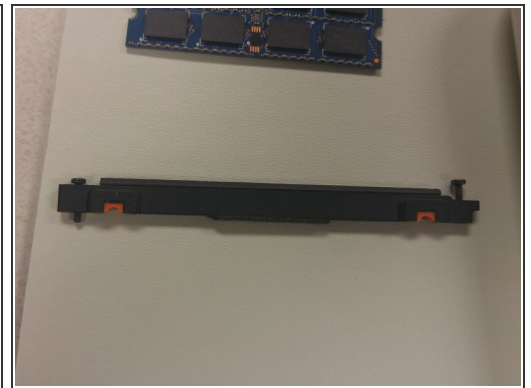
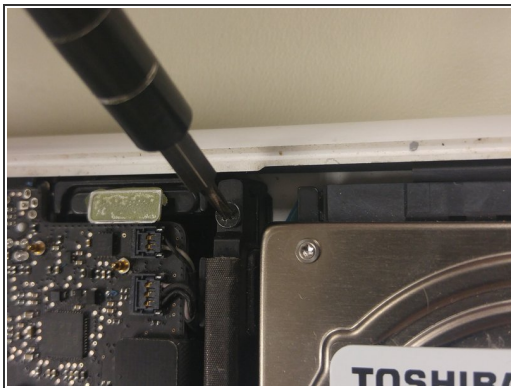
- Repeat steps 4-5 to remove the second RAM stick.

Step 7 — Hard Drive



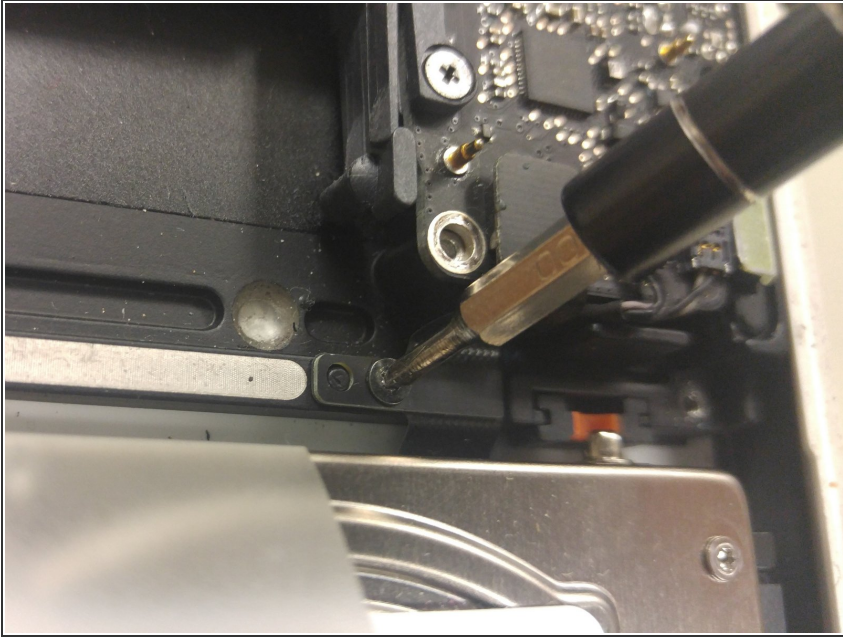
- Identify Hard Drive.

Step 8 — Hard Drive cont.



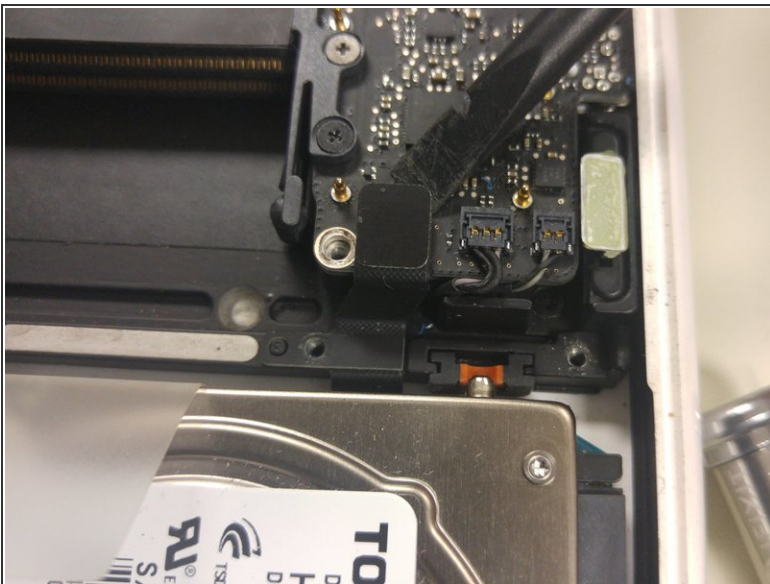
- Using a PH00 bit, remove two 11 mm Phillips screws securing the hard drive bracket to the upper case.
- Lift the retaining bracket out of the upper case.

Step 9 — Hard Drive cont.



- Using PH00 bit, unscrew the 4mm Phillips screw holding down the ribbon attaching the HDD to the motherboard.

Step 10 — Hard Drive cont.



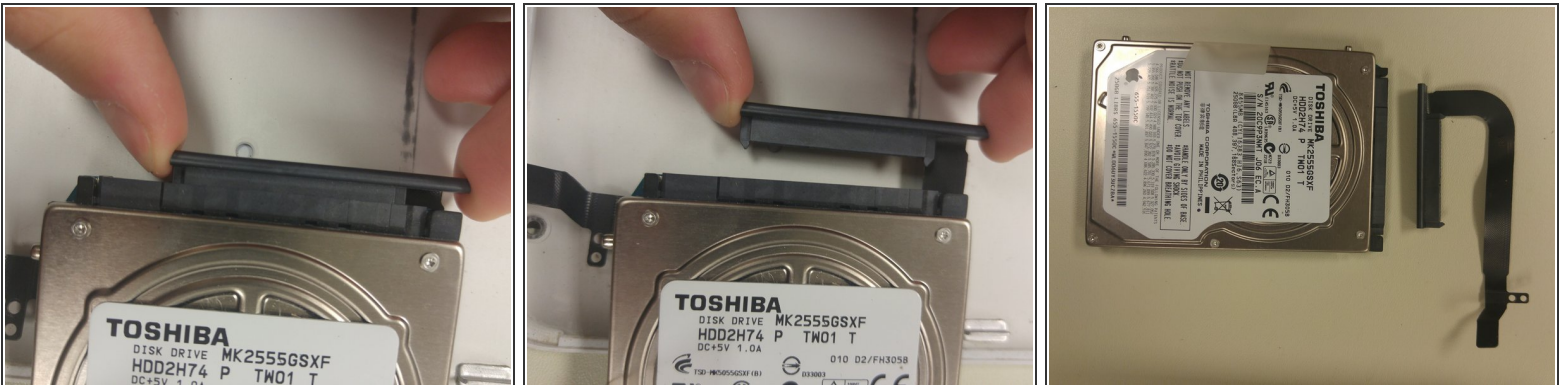
- Using the flat end of a spudger, detach the ribbon from the motherboard.

Step 11 — Removed Hard Drive



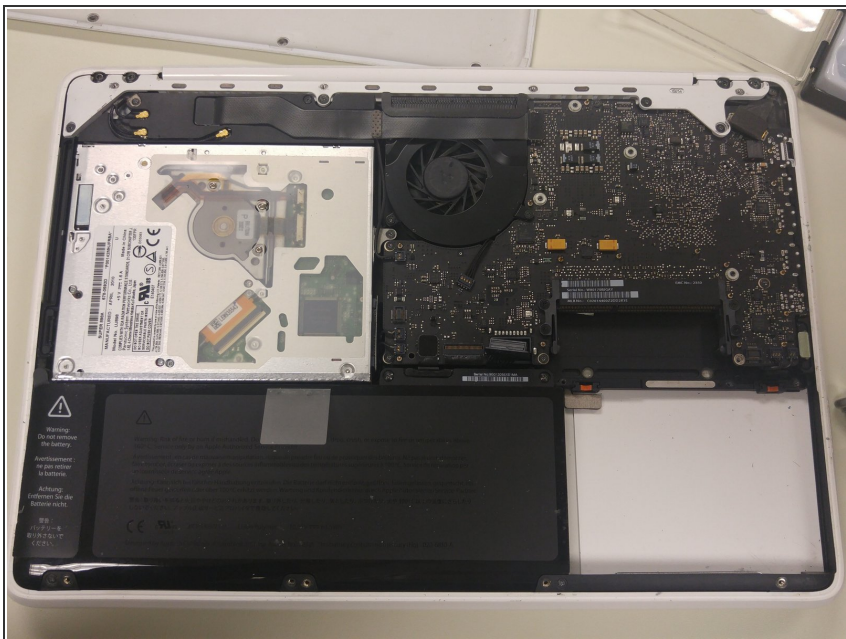
- Congrats, you have removed the hard drive!

Step 12 — SATA



- Remove the SATA cable from the hard drive by gently pulling the connector away from the body of the hard drive.

Step 13 — Nice Job!



- To replace all the removed parts, do the aforementioned steps in reverse order.

To reassemble your device, follow these instructions in reverse order.