



TEFAL juicer Gear Replacement

Replace the gear in your TEFAL juicer by disassembling the kitchen device.

Written By: [deleted]



INTRODUCTION

This guide tells you how to fix your TEFAL juicer whenever it is broken, by simply replacing the gears. This will prevent you from having to throw away a kitchen device that can easily be fixed.



TOOLS:

- [Large Needle Nose Pliers](#) (1)
- [T15 Security Torx Screwdriver](#) (1)




PARTS:

- [Tefal juicer gear 20 mm](#) (1)

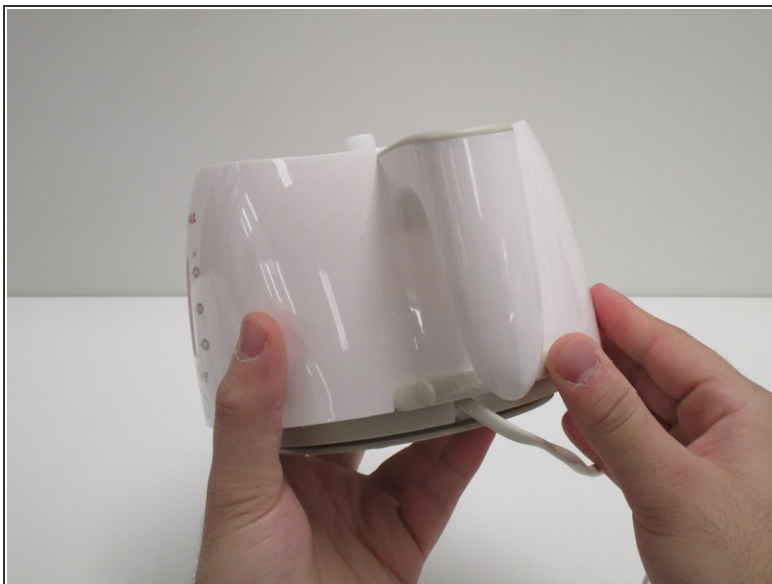
Step 1 — Disconnect the upper part of the juicer



 Before dismantling, disconnect the juicer from the grid.

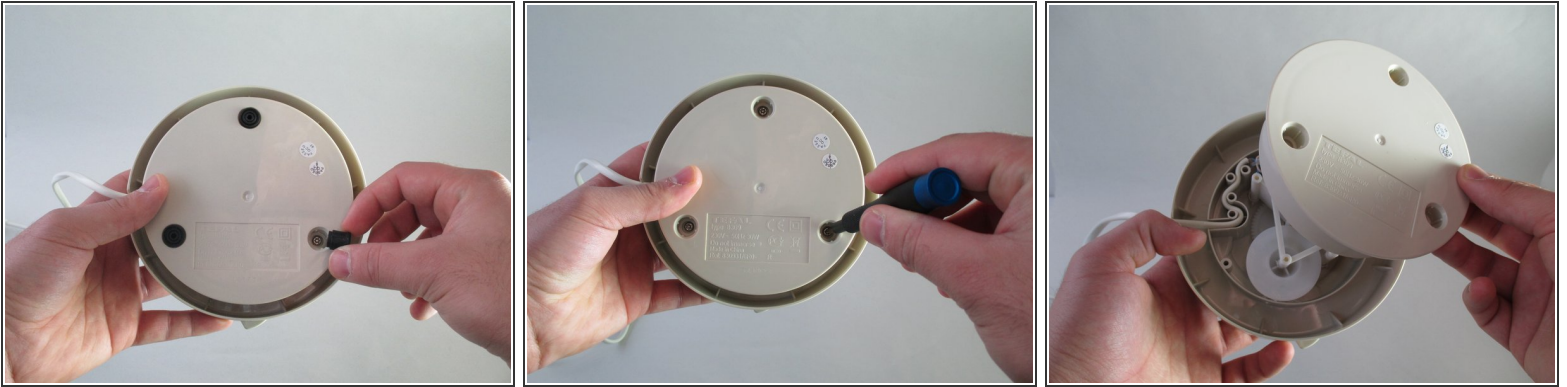
- Remove the lid of the juicer by lifting it up and away from the juicer.
- Remove the upper inner part of the juicer.

Step 2 — Remove the middle casing



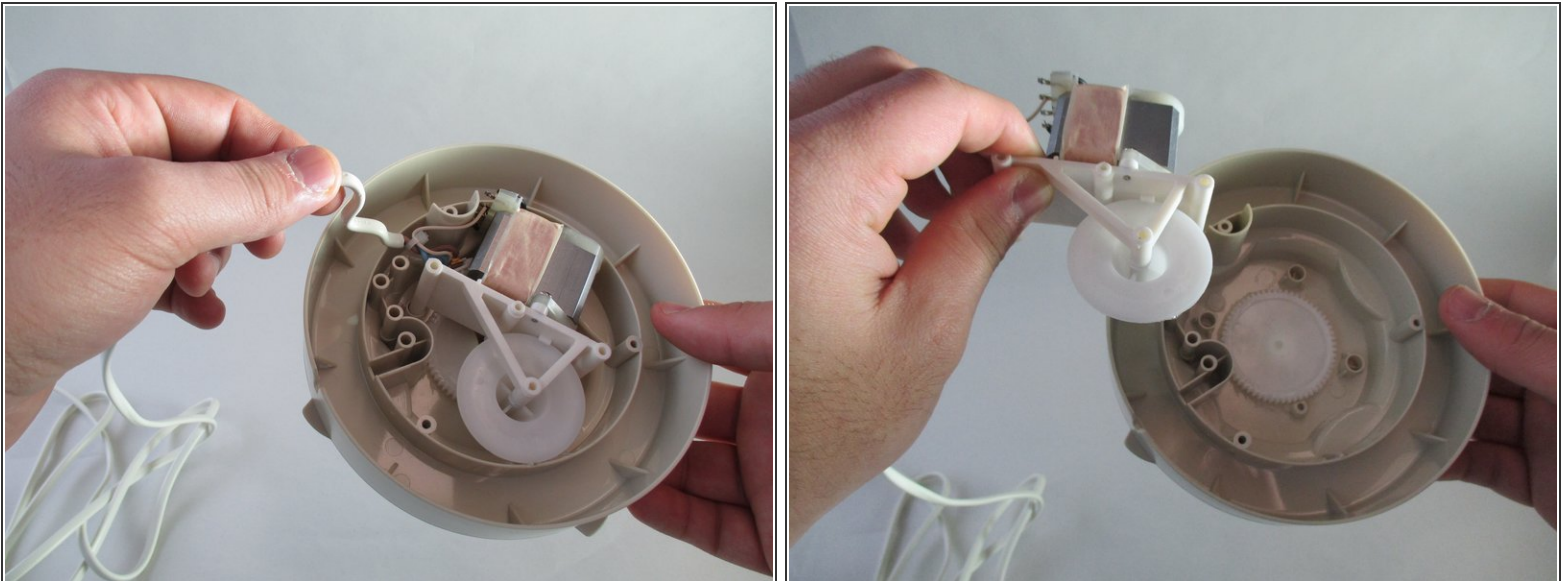
- Slide the beige button to the right so that the beige bottom casing of the juicer unlocks.
- Remove the middle casing.

Step 3 — Unscrew the bottom of the casing



- Pull the three black rubber grips from the bottom with your fingers.
- Use a Torx T15H security bit screwdriver to untwist the three 15.5 mm long socket screws of 5.5 mm head diameter that are hidden behind the black rubber grips.
- Lift the bottom of the juicer.

Step 4 — Detach the power cable and motor



- Pull on the power cable of the juicer.
- Remove the power cable with the attached motor.

Step 5 — Disassemble the shaft by pulling



- Clamp the shaft tight with a needle nose plier.
 - Disassemble the shaft, the bottom of the juicer and the gear by pulling the pressfitted parts from each other.
- ★ When reassembling make sure to press the components tight again.

Step 6 — Replace the gear



- Remove the gear from the bottom casing.

To reassemble your device, follow these instructions in reverse order.