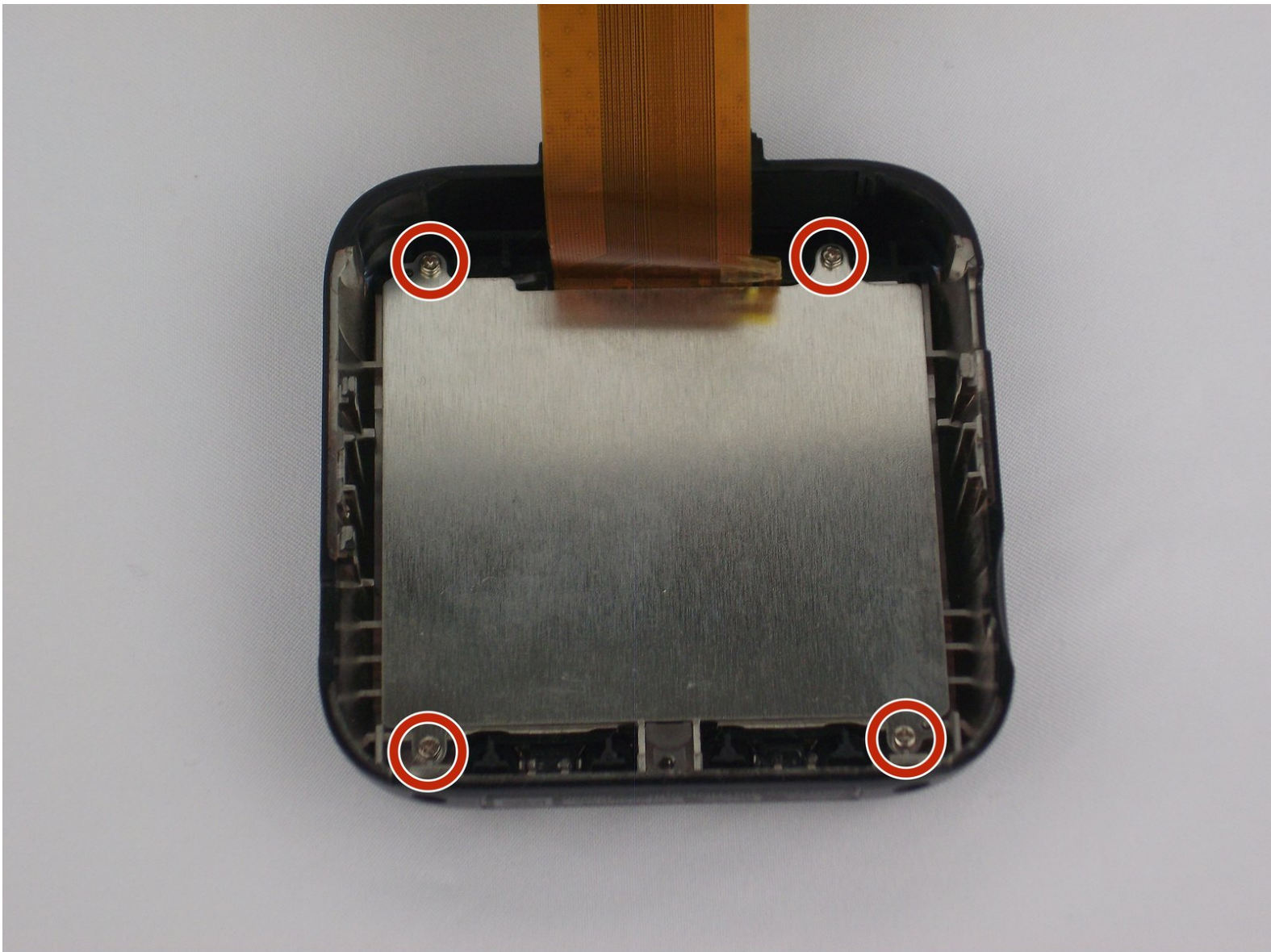




Garmin Dash Cam 20 Screen Replacement

This guide will give readers the necessary steps in replacing the Garmin Dash Cam's 20 screen.

Written By: Jesse Hillman





TOOLS:

- [Metal Spudger](#) (1)
- [T5 Torx Screwdriver](#) (1)
- [T6 Torx Screwdriver](#) (1)
- [Phillips #1 Screwdriver](#) (1)

Step 1 — Internal Assembly



 Be sure to turn off the Dash Cam by pressing the power button.

Step 2



- Rotate the Dash Cam to where the socket faces you.
- Remove the 9 mm screw using the Torx T6 screwdriver.

Step 3



- Remove the Dash Cam socket piece.

Step 4



- Rotate the Dash Cam to where the product information faces you.
- Remove the two 5 mm screws using the Torx T5 screwdriver.

Step 5



- Remove top case from the bottom case.

i The compact nature of the casing requires use of the metal spudger for needed leverage.

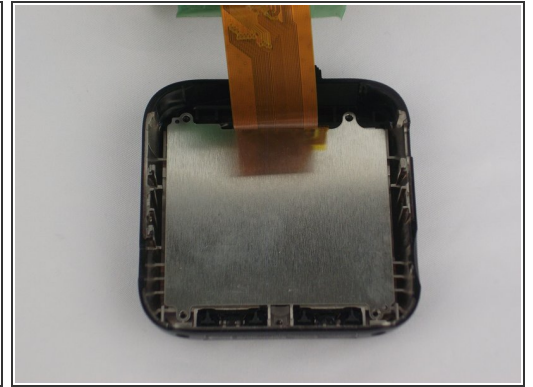
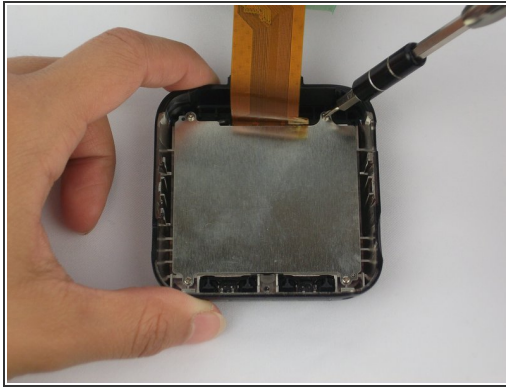
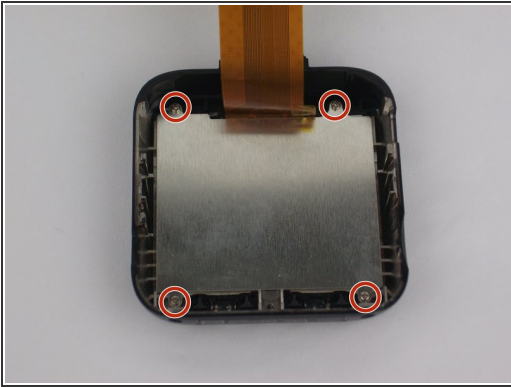
Step 6



- Remove the two 5mm screws using the Torx T5 screwdriver

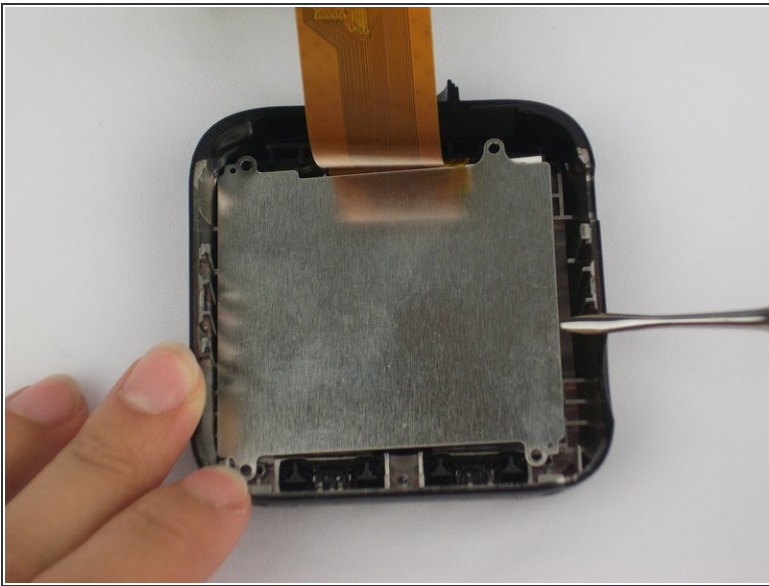
i By removing the screws, the metal battery frame will now become free from the rest of the device.

Step 7 — Screen



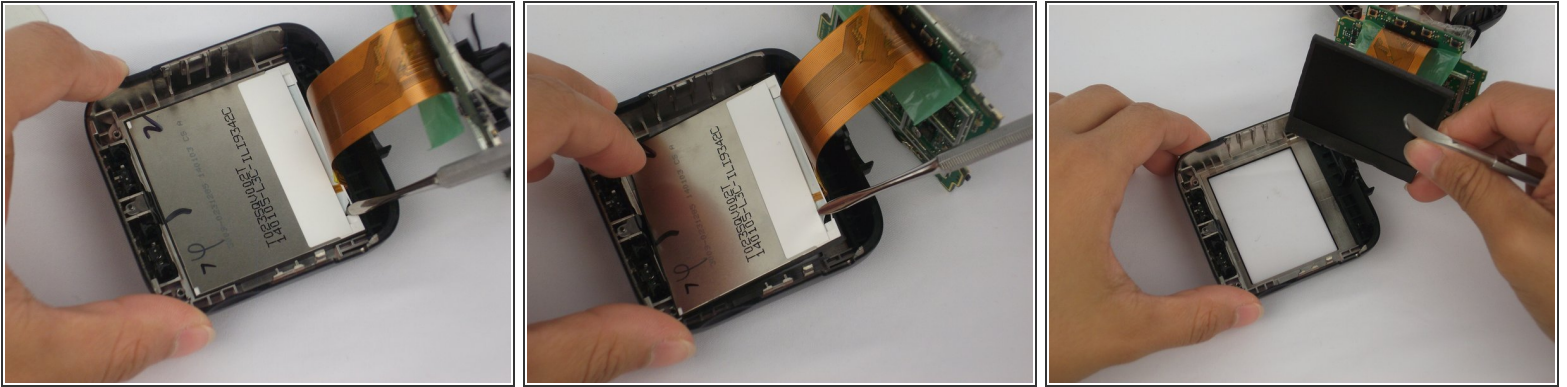
- Use the Phillips screwdriver to remove the four 5mm screws.

Step 8



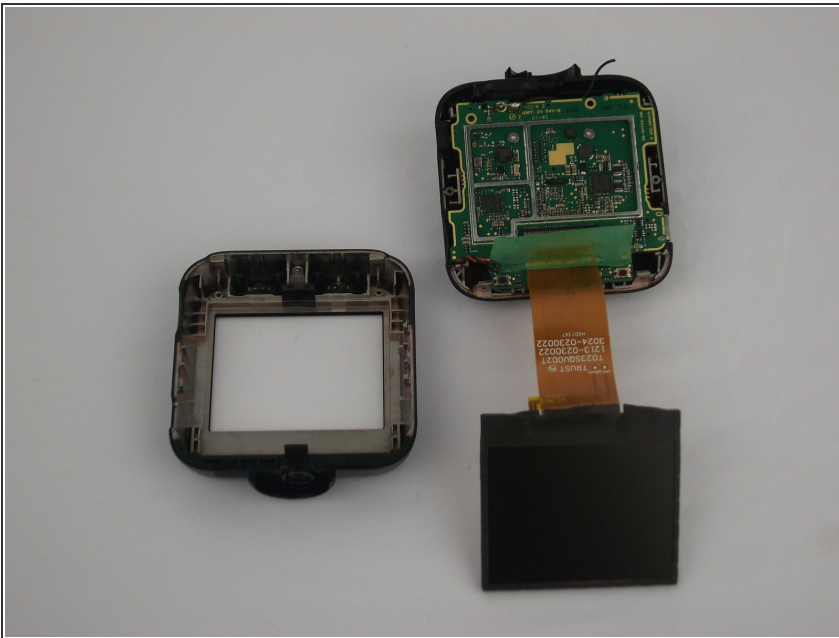
- Use the metal spudger to remove metal plate from device. This will reveal the screen.

Step 9



- Use the metal spudger to remove screen from device.

Step 10



- The screen is now detached.

To reassemble your device, follow these instructions in reverse order.