



# Timer Switch Relay Replacement

The guide shows how to replace the relay...

Written By: Michelle Mertens



# INTRODUCTION

The guide shows how to replace the relay (transformer) in a timer switch. This transformer is used for heater control. Without this transformer, the switch does not work.

The timer switch was bought at Gamma ([link](#)), a large construction store.

---

## TOOLS:

[Phillips #1 Screwdriver](#) (1)

[Soldering Iron 60w Hakko 503F](#) (1)

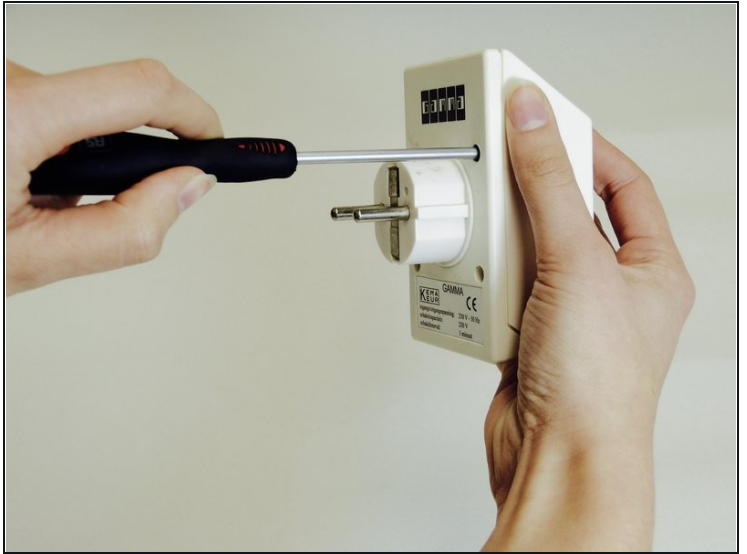
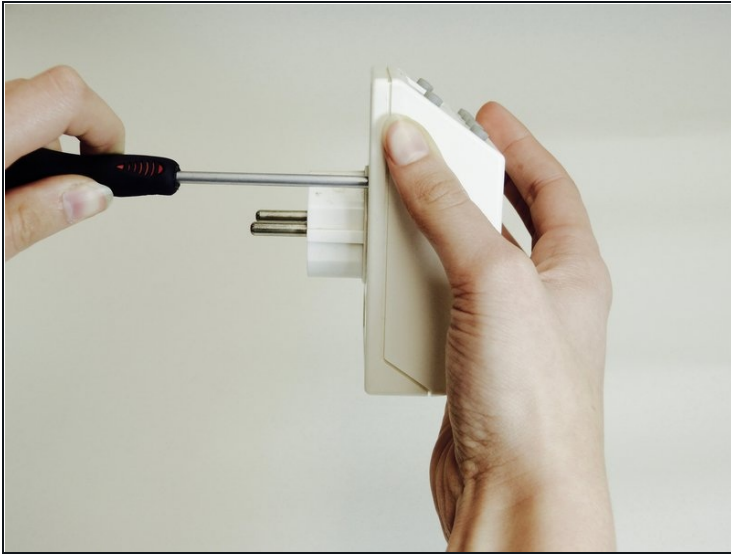
---

## Step 1 — Relay



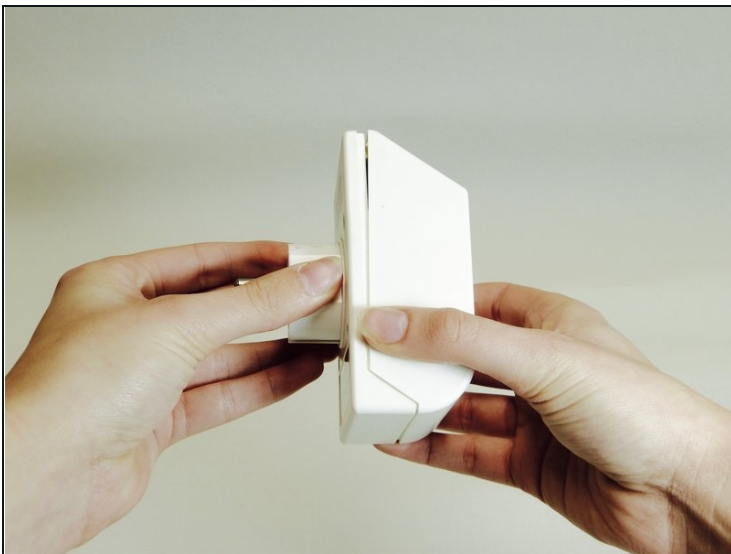
- Locate the screw holes.

## Step 2



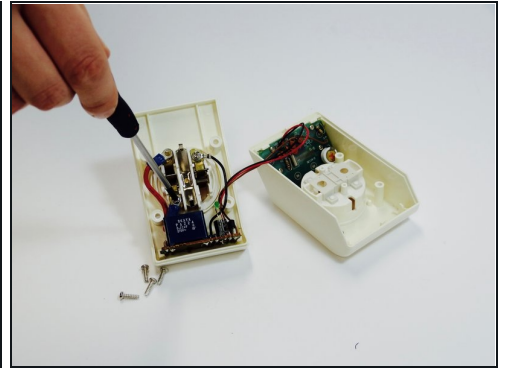
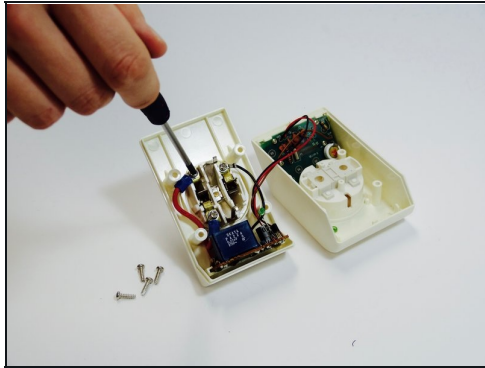
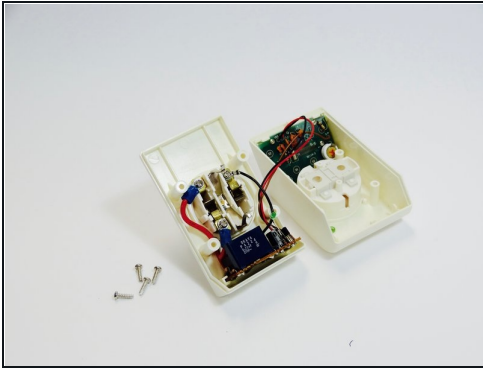
- Use the #1 Phillips head screwdriver to remove the screws. This may cost some prying effort.

## Step 3



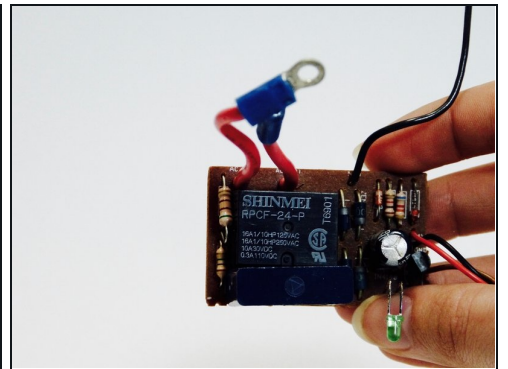
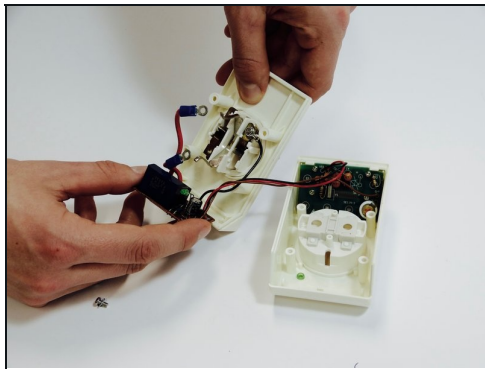
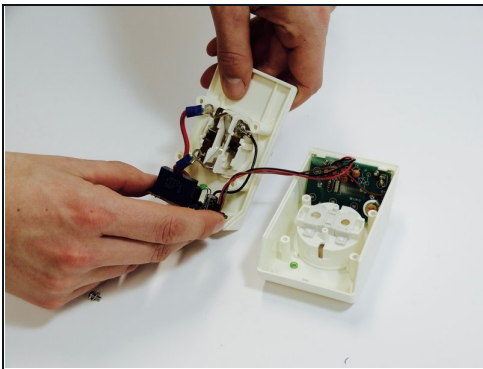
- Open the case by pulling the back case from the front case.

## Step 4



- Use the #1 Phillips head screwdriver to remove the screws on the inside.

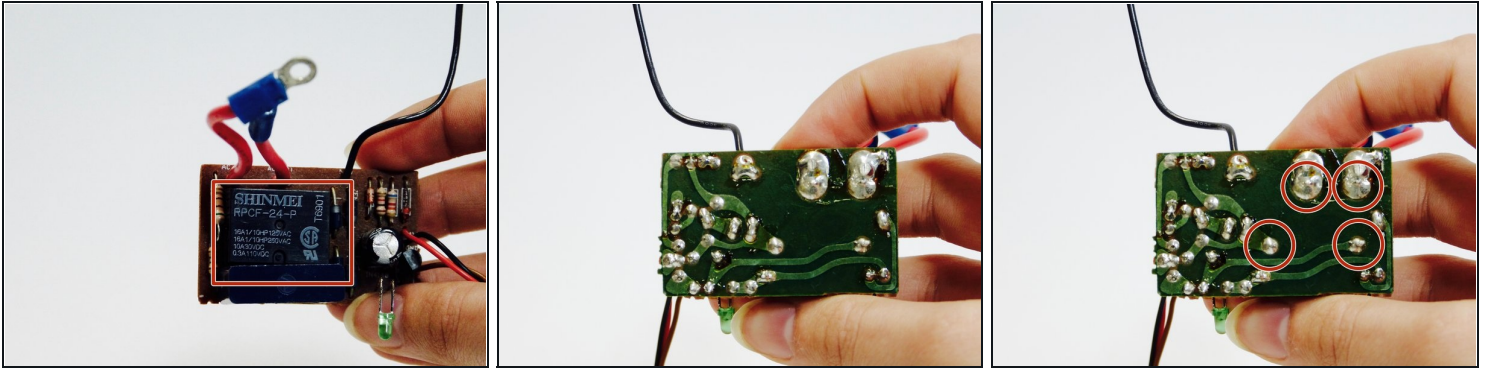
## Step 5



- Pull the PCB (printed circuit board) from the case.

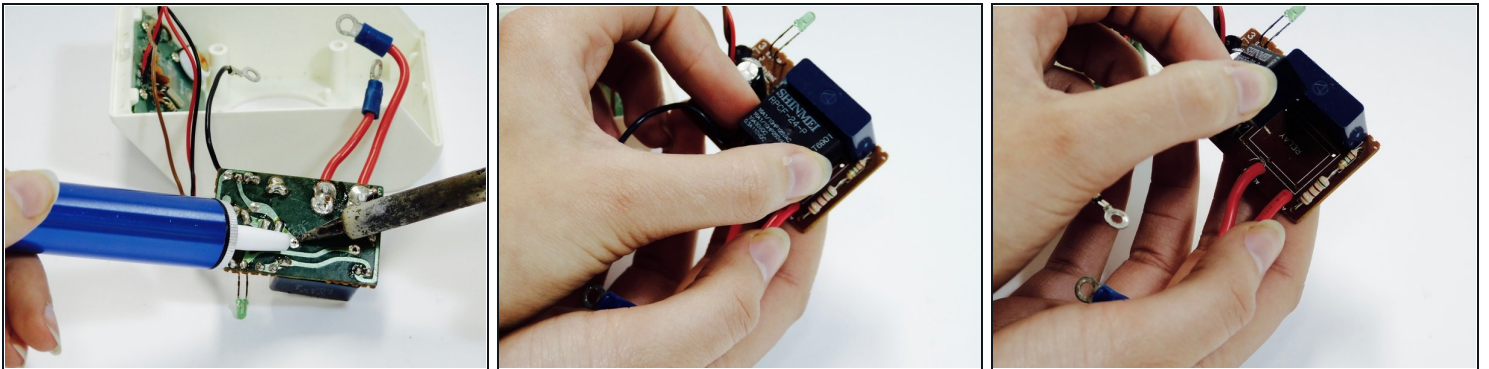


## Step 6



- Locate the relay.
- Locate where the relay is connected to the PCB.

## Step 7

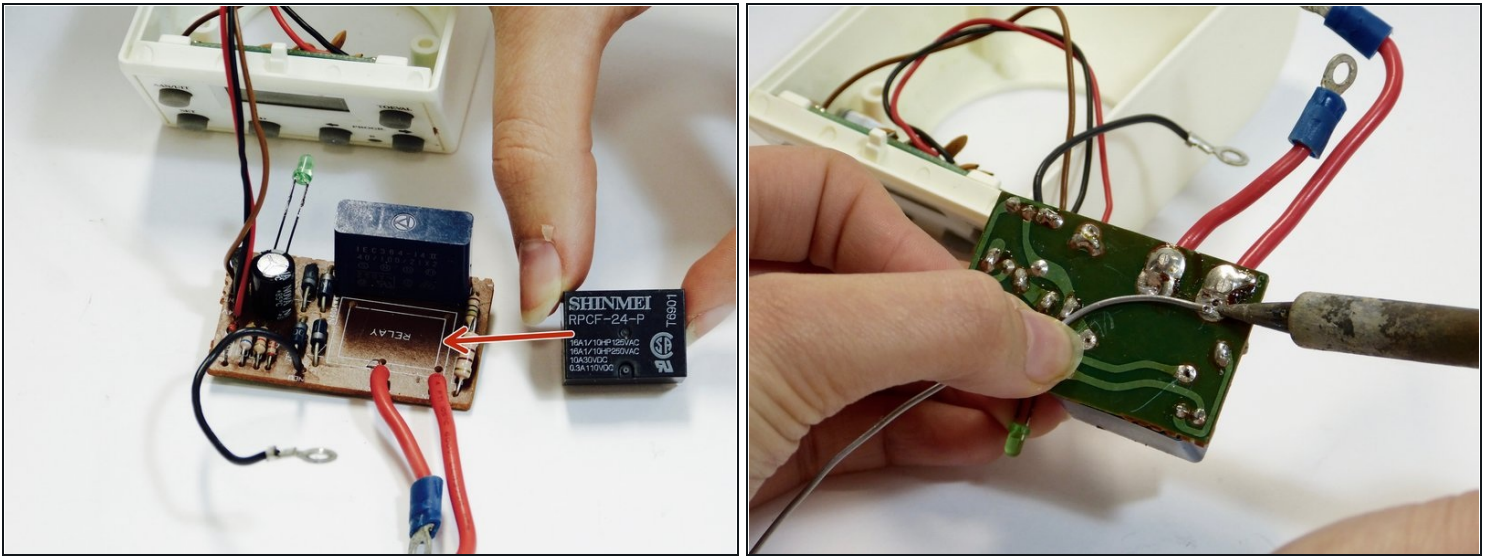


- Melt the solder with the soldering iron.

⚠ Don't burn yourself by touching the hot soldering iron tip.

- Use the [desoldering pump](#) to suck up the old solder.
- Pull the relay from the PCB.

## Step 8



- Put a new relay at the same place as the old relay.
- Use new solder and the soldering iron to connect the new relay to the PCB.

⚠ Don't burn yourself by touching the hot soldering iron tip.

To reassemble your device, follow these instructions in reverse order.