



# Magellan Roadmate 9055-LM Battery Replacement

This guide will help you, how to change the battery of your Magallen Roadmate 9055-LM device.

Written By: Umar siddique



# INTRODUCTION

If your device won't turn on , you can access or replace the battery by using this guide. Also , make sure you have clean open place to work with. Make sure you have all the tools including the glue, which holds the battery to the panel.



## TOOLS:

- [Phillips #0 Screwdriver](#) (1)
  - [iFixit Opening Tools](#) (1)
-

## Step 1 — Magellan Roadmate 9055-LM Back Panel Disassembly



⚠ Flip your device with back panel facing up.

## Step 2



- Unscrew four Phillips #0 screws from the back panel.

### Step 3



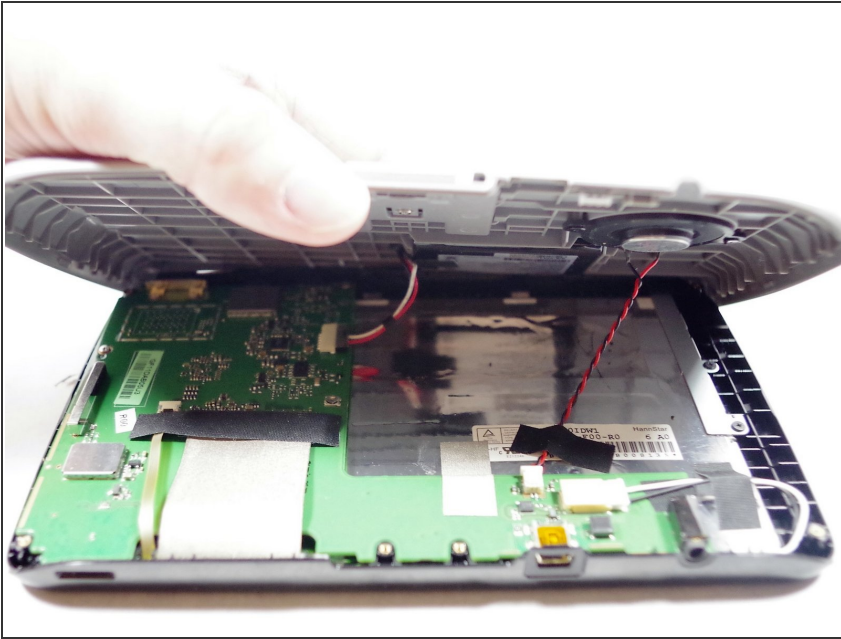
- Unscrew two Phillips #0 screws from the back panel.

### Step 4



- Use a plastic opening tool to pop the right side of the panel.

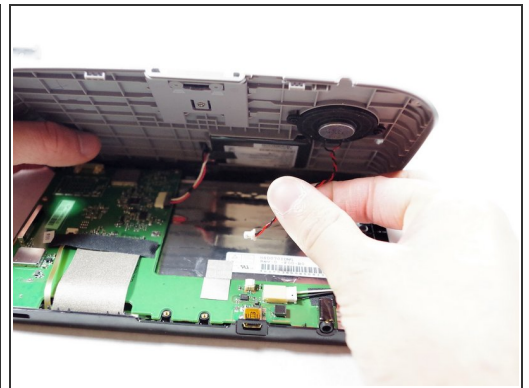
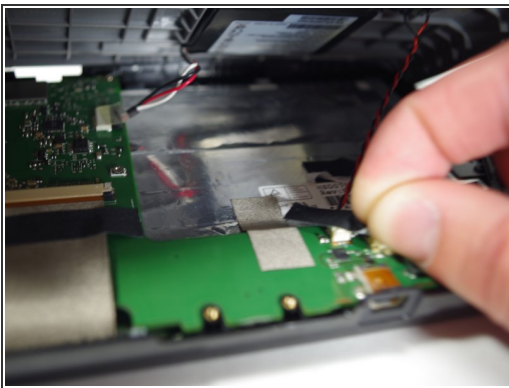
## Step 5



⚠️ Lifting the back panel too quickly or forcefully may damage the speaker cable and battery cable, which are still attached underneath.

- Gently lift up the back panel.

## Step 6




- Remove the tape.
- Unplug the cable for the speaker.

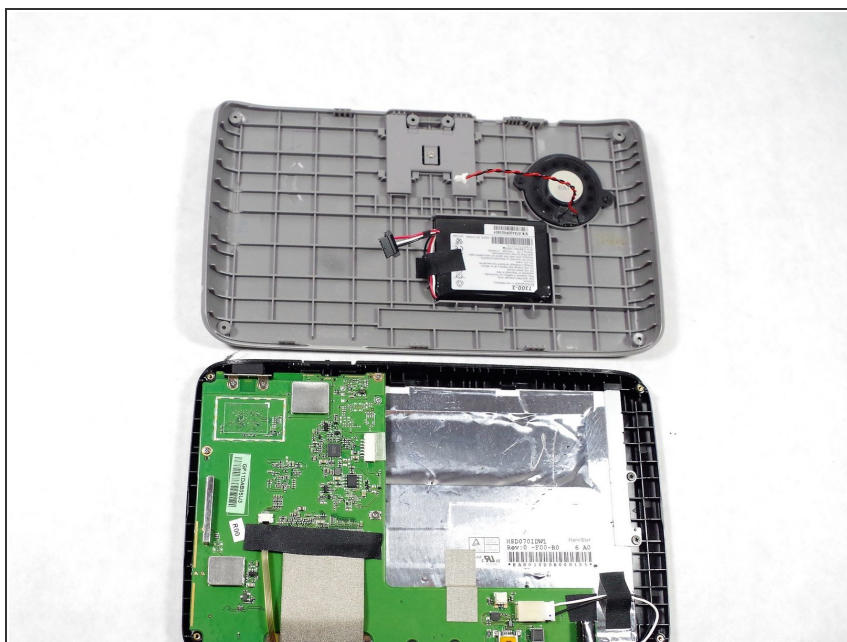
## Step 7



- Remove the cable of the battery.

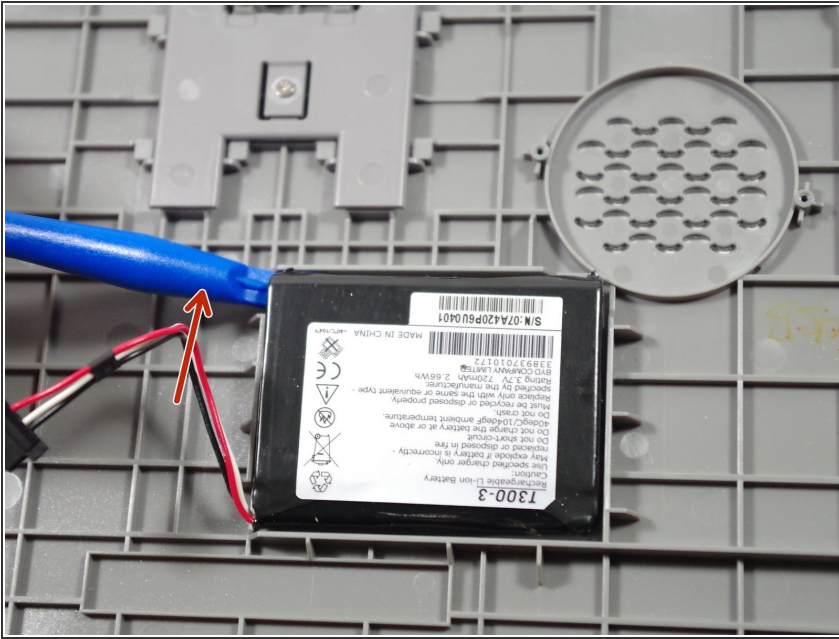
 Tape removal is not necessary.

## Step 8



- Place the back panel gently on the table.

## Step 9 — Battery



- Remove the battery by using the iFixit plastic tool.
- ⚠ Battery is held by glue to the panel.
- ★ Remember to glue the new battery with the panel to keep it secure..

To reassemble your device, follow these instructions in reverse order.