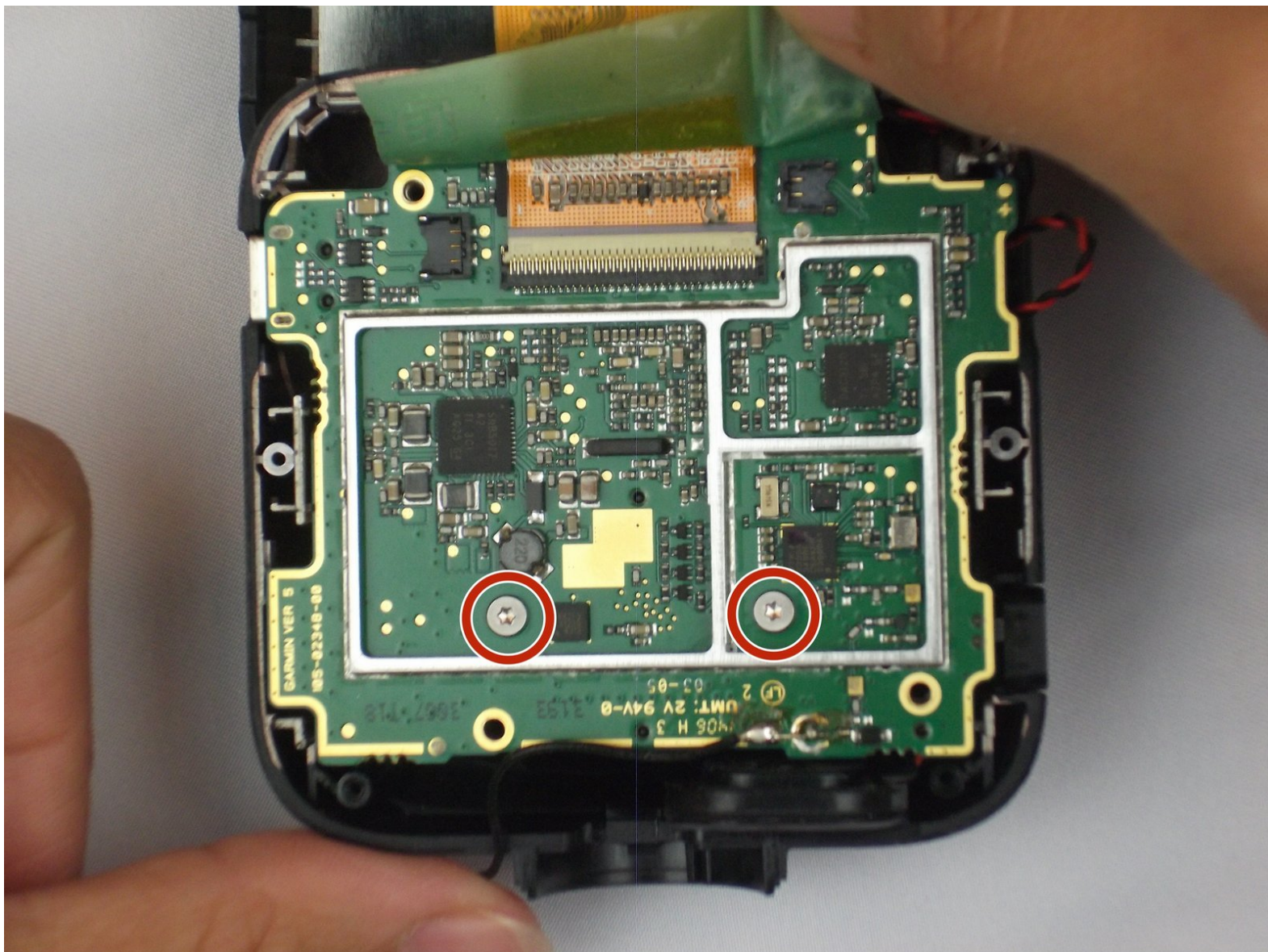




Garmin Dash Cam 20 Camera Lens Replacement

This guide will help users replace the camera lens on their Garmin Dash Cam 20.

Written By: Jesse Hillman






TOOLS:

- [Metal Spudger](#) (1)
 - [T5 Torx Screwdriver](#) (1)
 - [T6 Torx Screwdriver](#) (1)
 - [Tweezers](#) (1)
-

Step 1 — Internal Assembly



 Be sure to turn off the Dash Cam by pressing the power button.

Step 2



- Rotate the Dash Cam to where the socket faces you.
- Remove the 9 mm screw using the Torx T6 screwdriver.

Step 3



- Remove the Dash Cam socket piece.

Step 4



- Rotate the Dash Cam to where the product information faces you.
- Remove the two 5 mm screws using the Torx T5 screwdriver.

Step 5



- Remove top case from the bottom case.

i The compact nature of the casing requires use of the metal spudger for needed leverage.

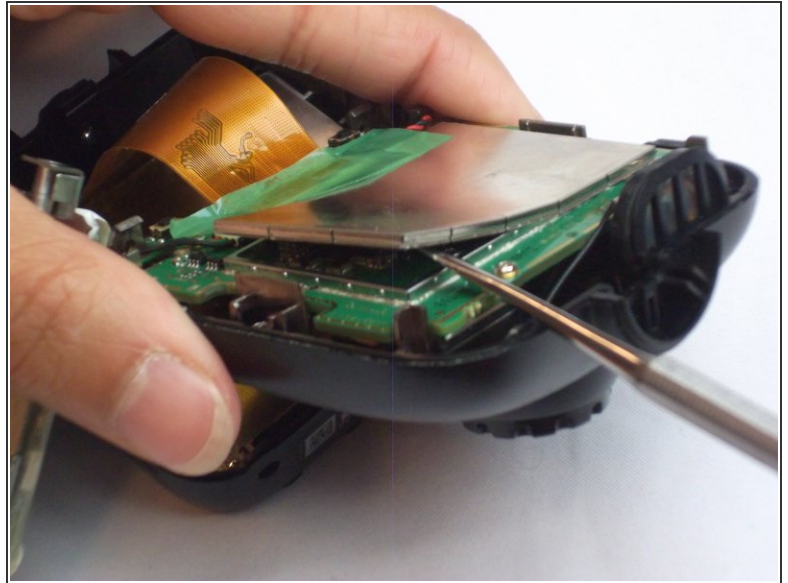
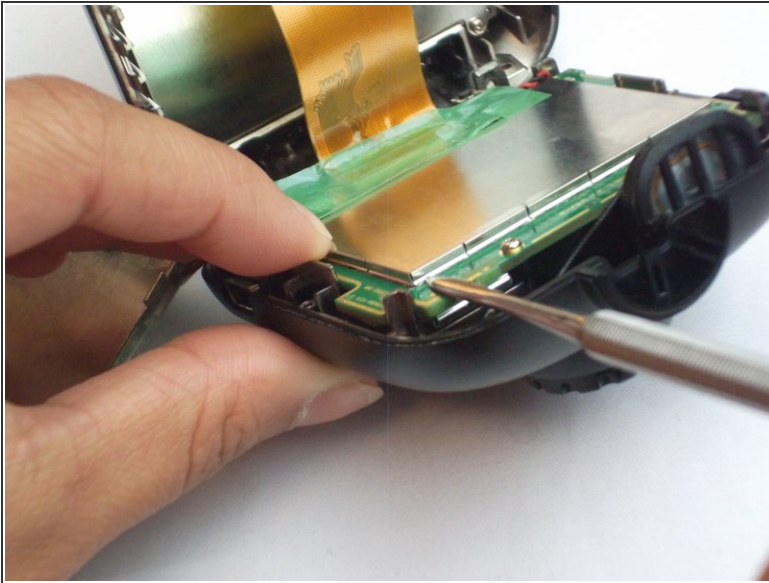
Step 6




- Remove the two 5mm screws using the Torx T5 screwdriver

i By removing the screws, the metal battery frame will now become free from the rest of the device.

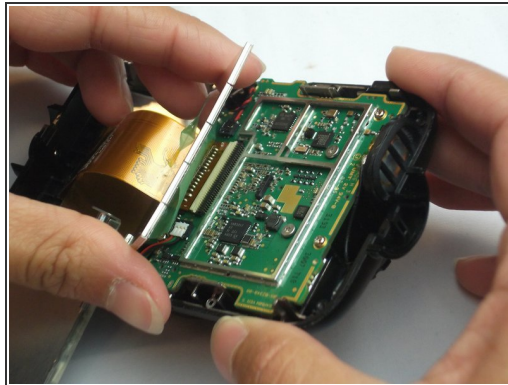
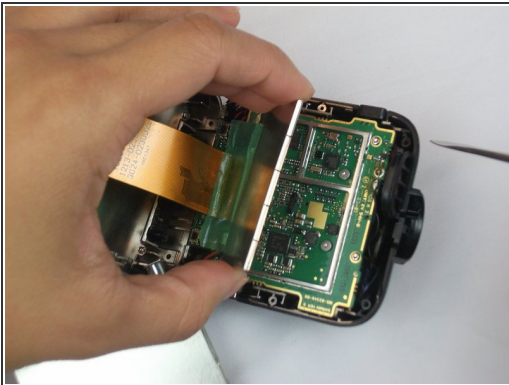
Step 7 — Motherboard Components



 This step shows the use of an incorrect tool. Always use an ESD safe tool, like a nylon spudger, when working with delicate internal components.

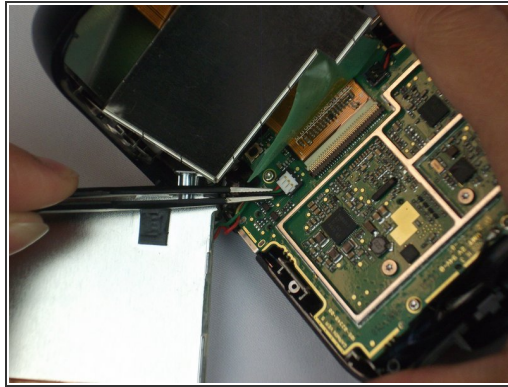
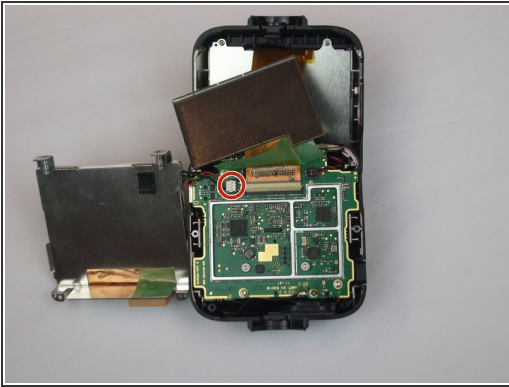
- Use the nylon spudger to pry the corner of the case off of the motherboard.

Step 8



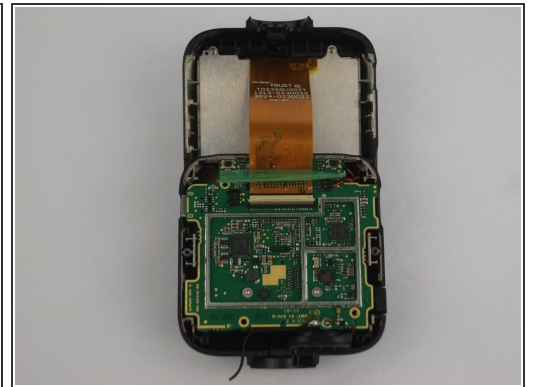
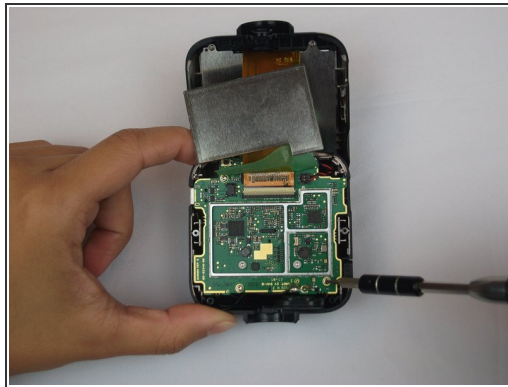
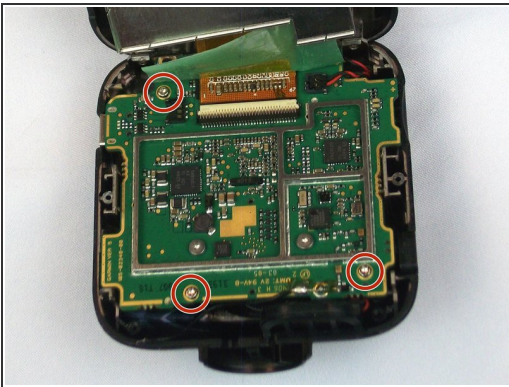
- Remove the metal case off of the motherboard.

Step 9



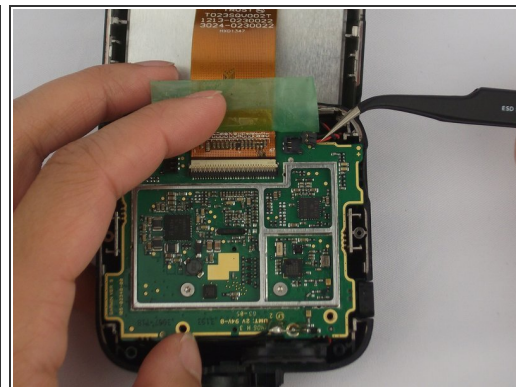
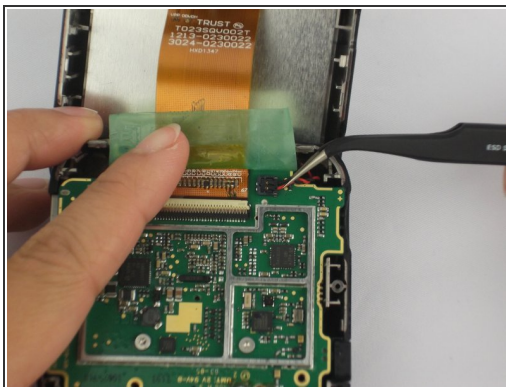
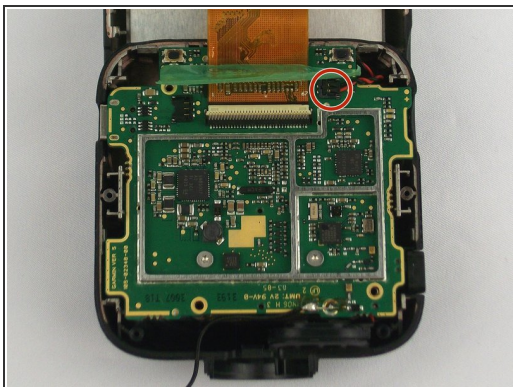
- Remove the battery connection.

Step 10



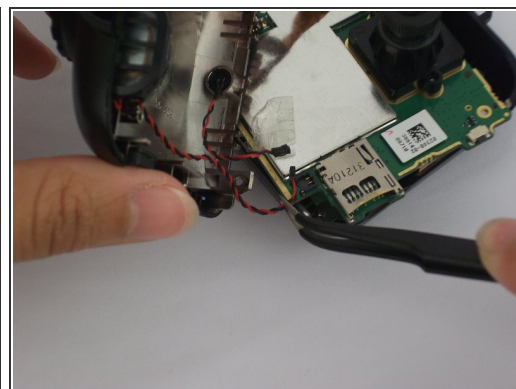
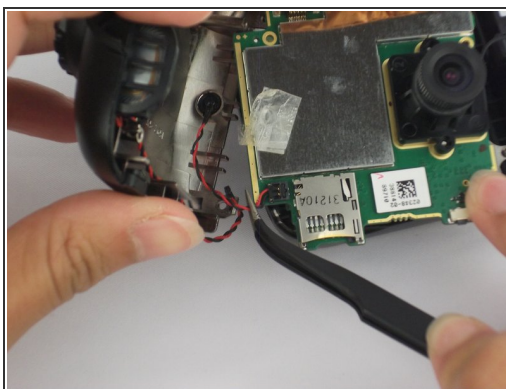
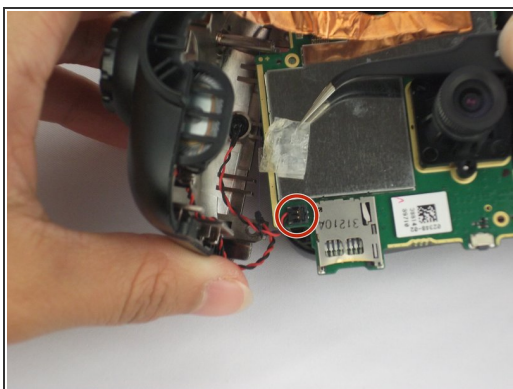
- Remove the three 5 mm screws using the Torx T5 screwdriver.

Step 11



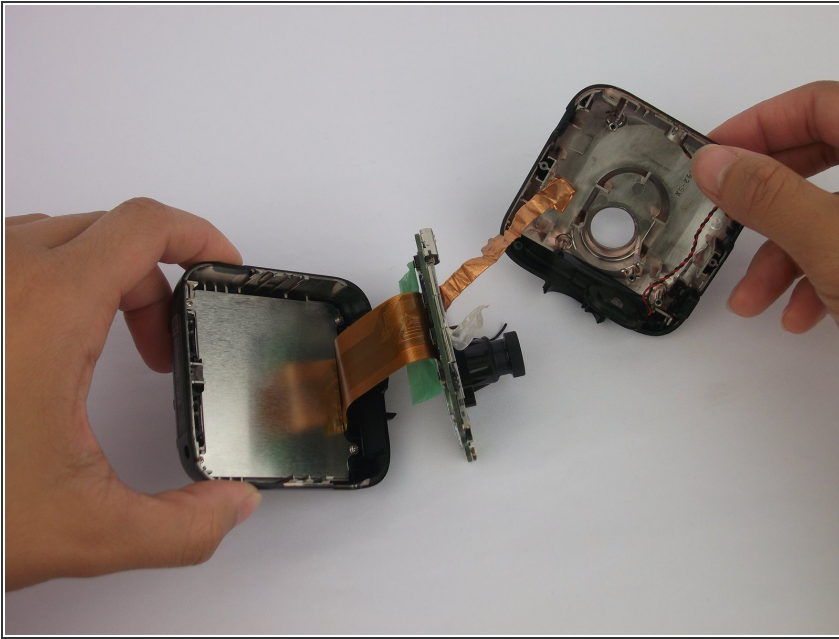
- Use tweezers to remove the connector on the top right of the motherboard.

Step 12



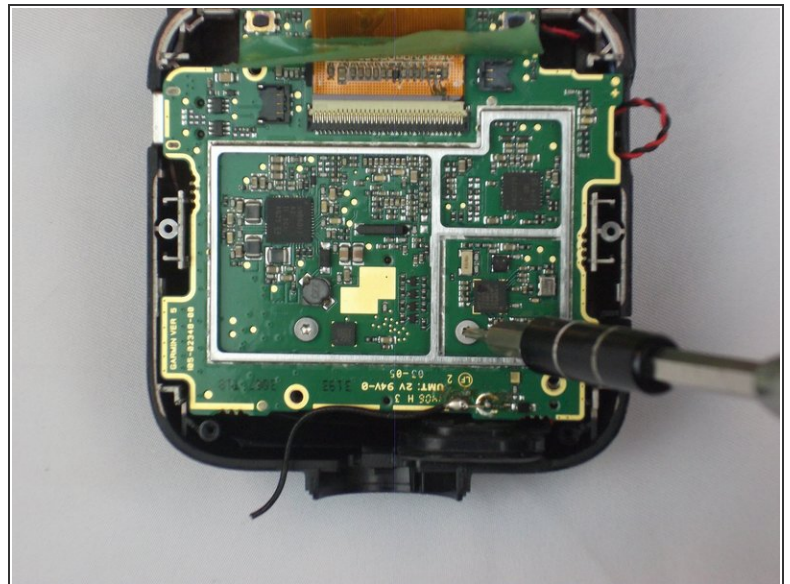
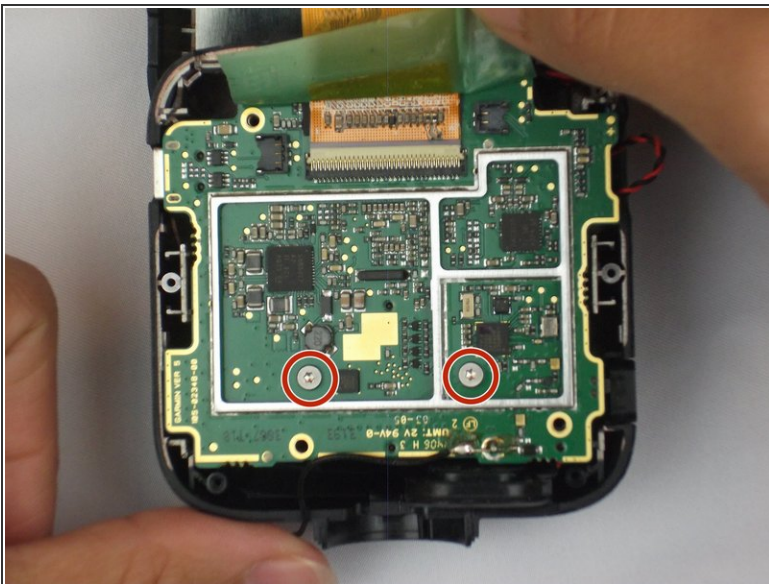
- Remove the motherboard from the case and flip to reveal SD connection.
- Use tweezers to remove the connector next to the SD card slot.

Step 13



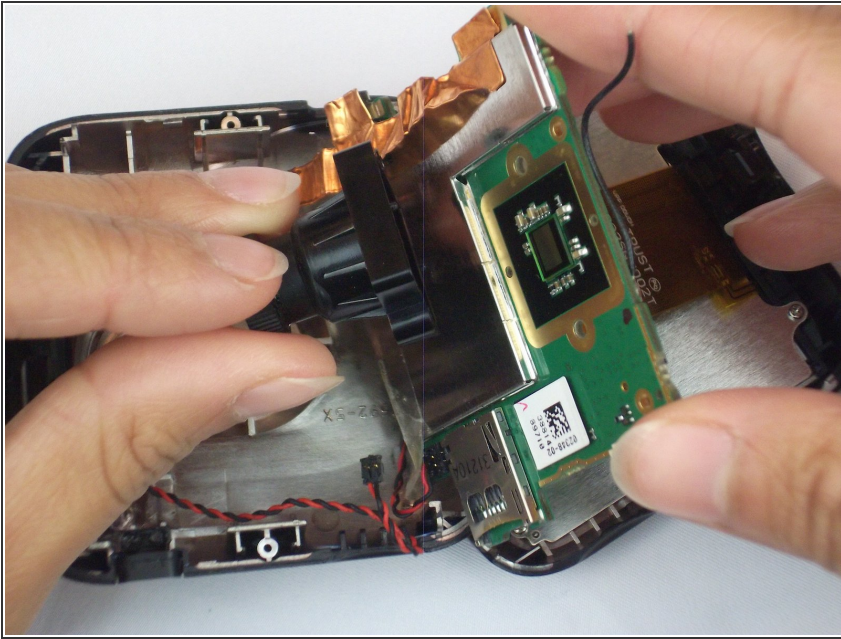
- The motherboard is now removed aside from the copper strip and its connector.
- Disconnect from the front case and the copper strip.

Step 14 — Camera Lens



- Use the Torx T5 screwdriver to remove the two 5mm screws.
- ⓘ These screws hold the camera in place. Therefore, the lens will fall into the bottom case.

Step 15



- The camera lens is now detached.

To reassemble your device, follow these instructions in reverse order.