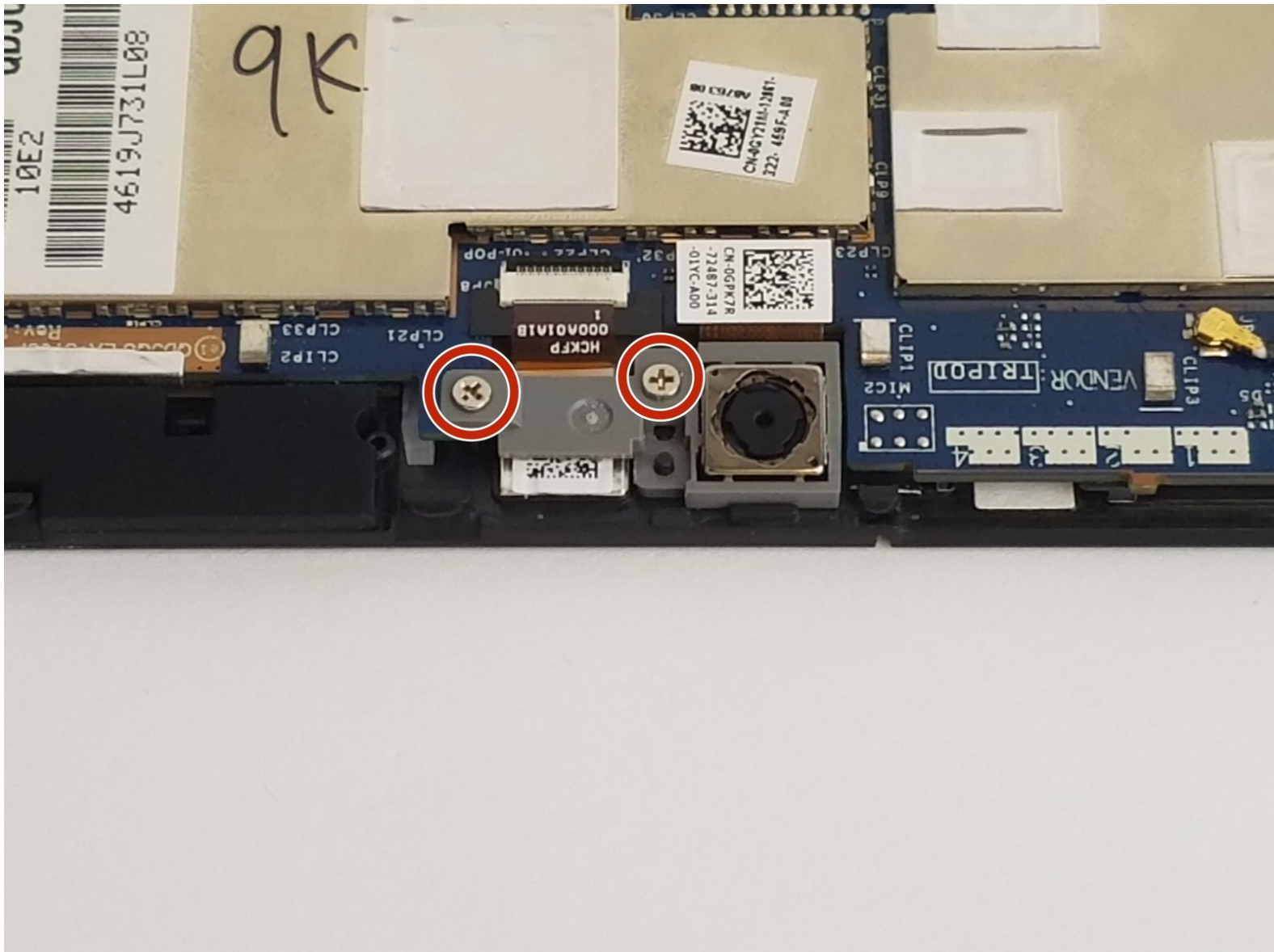




# Dell XPS 10 Front and Rear Camera Replacement

This guide will walk you through replacing the camera.

Written By: James



## INTRODUCTION

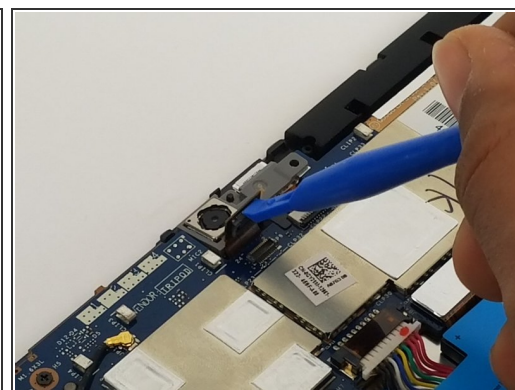
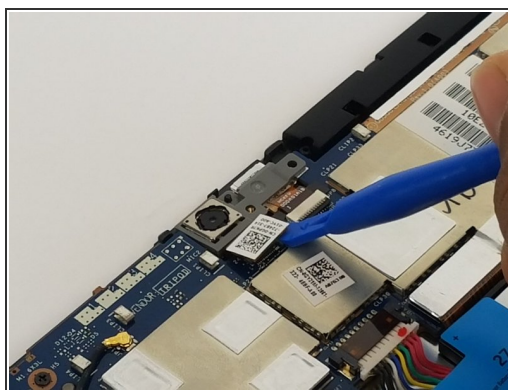
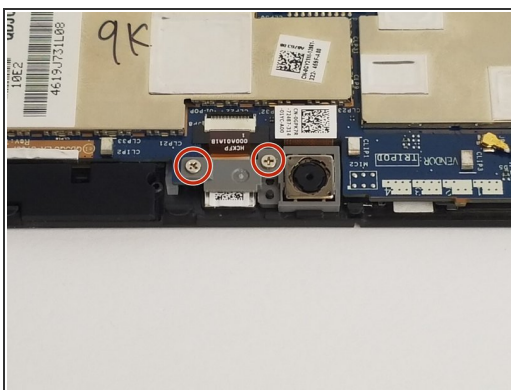
Even though this repair is not very difficult it will require a few special tools. The rest of the repair is easy enough and there are no hazards to be aware of. This repair might be needed if your cameras are cracked or internally damaged and are no longer being recognized.



### TOOLS:

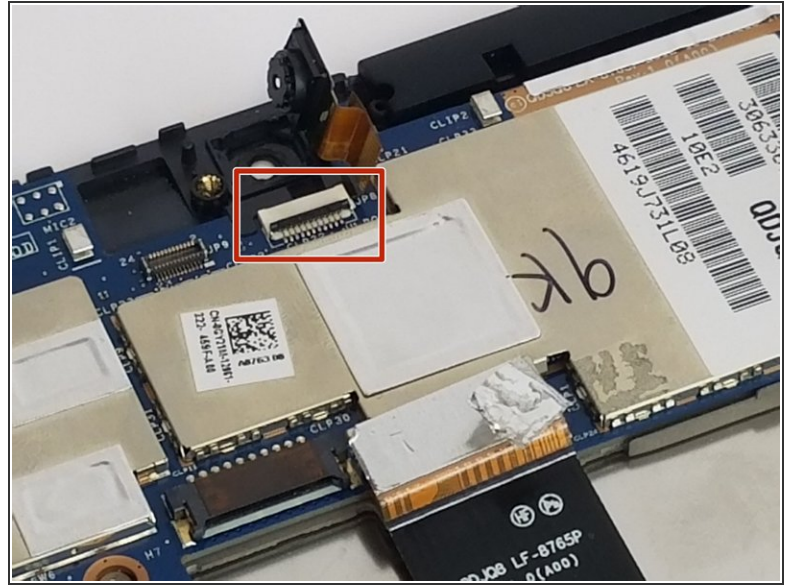
- [iFixit Opening Tools](#) (1)
  - [Heavy-Duty Spudger](#) (1)
  - [Phillips #0 Screwdriver](#) (1)
-

## Step 1 — Front and Rear Camera



- Unscrew the two screws shown circled in red in the picture.
- Use a #0 Phillips screwdriver to remove the two 4 mm screws
- Lift up the plug that connects the camera to the motherboard using the plastic opening tool as shown in the pictures.

## Step 2



- i** After the rear facing camera is removed, you may now remove the front facing camera.

  - Use the nylon spudger to disconnect the cable on the motherboard.
- i** Make sure you use the black plastic spudger to pry up the aluminum tape holding the front facing camera. Be careful as the tape is fragile.

To reassemble your device, follow these instructions in reverse order.