



Magellan Roadmate 9055-LM Touchscreen Replacement

This guide will show you how to safely replace the touchscreen of the GPS

Written By: YuChe Chang





TOOLS:

- [iFixit Opening Tools](#) (1)
- [Phillips #0 Screwdriver](#) (1)
- [Phillips #1 Screwdriver](#) (1)

Step 1 — Magellan Roadmate 9055-LM Back Panel Disassembly



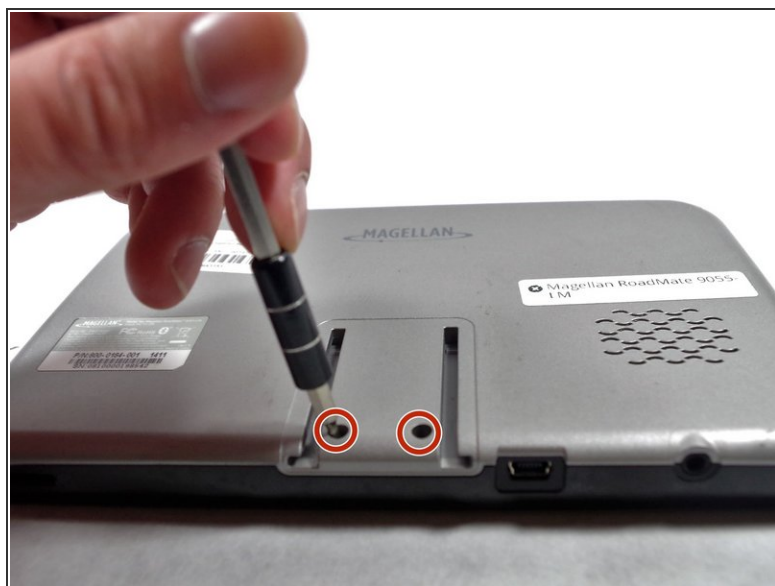
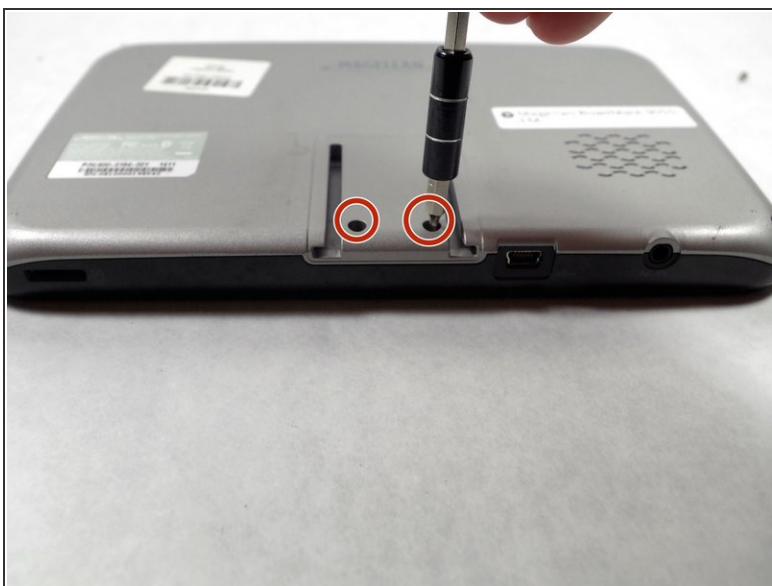
⚠ Flip your device with back panel facing up.

Step 2



- Unscrew four Phillips #0 screws from the back panel.

Step 3



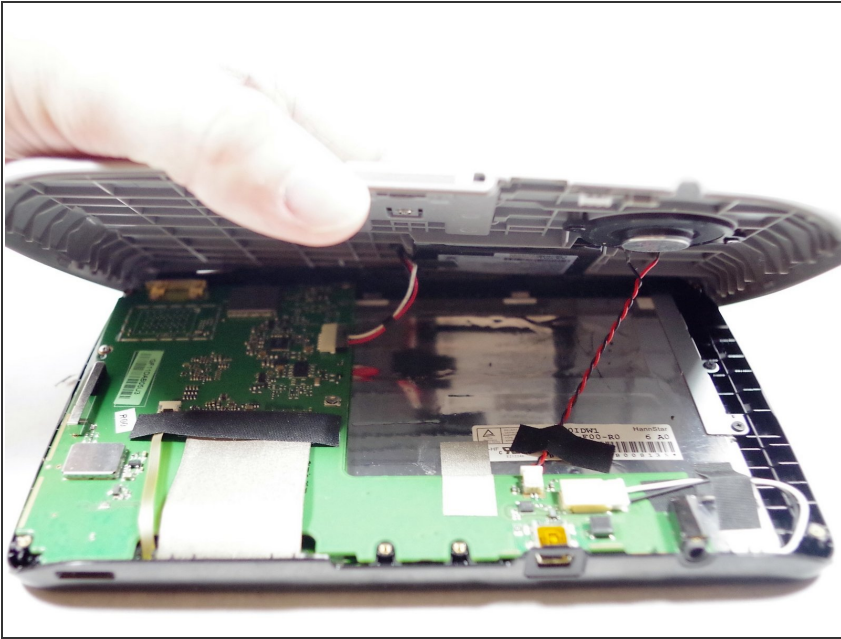
- Unscrew two Phillips #0 screws from the back panel.


Step 4



- Use a plastic opening tool to pop the right side of the panel.

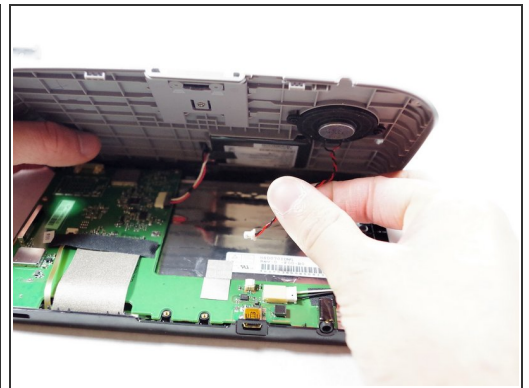
Step 5



 Lifting the back panel too quickly or forcefully may damage the speaker cable and battery cable, which are still attached underneath.

- Gently lift up the back panel.

Step 6




- Remove the tape.
- Unplug the cable for the speaker.

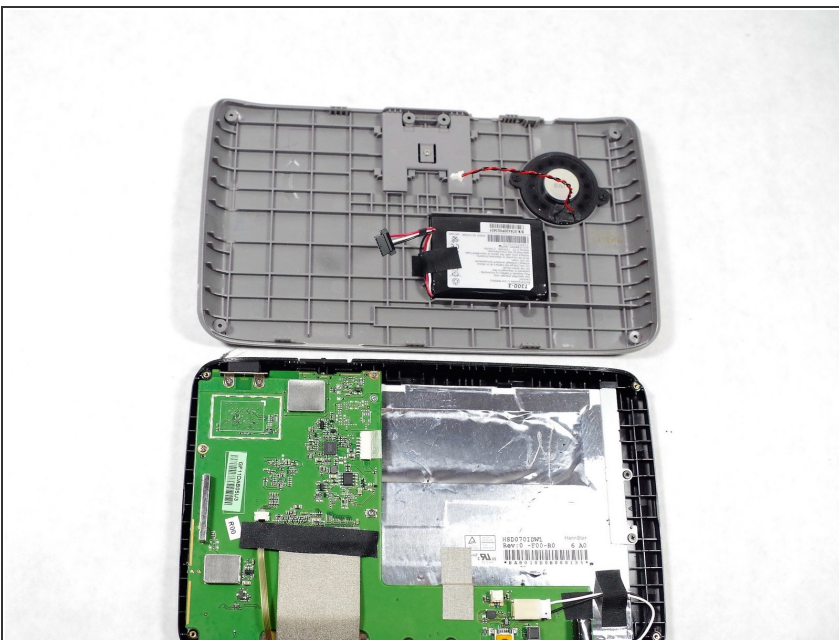
Step 7



- Remove the cable of the battery.

 Tape removal is not necessary.

Step 8



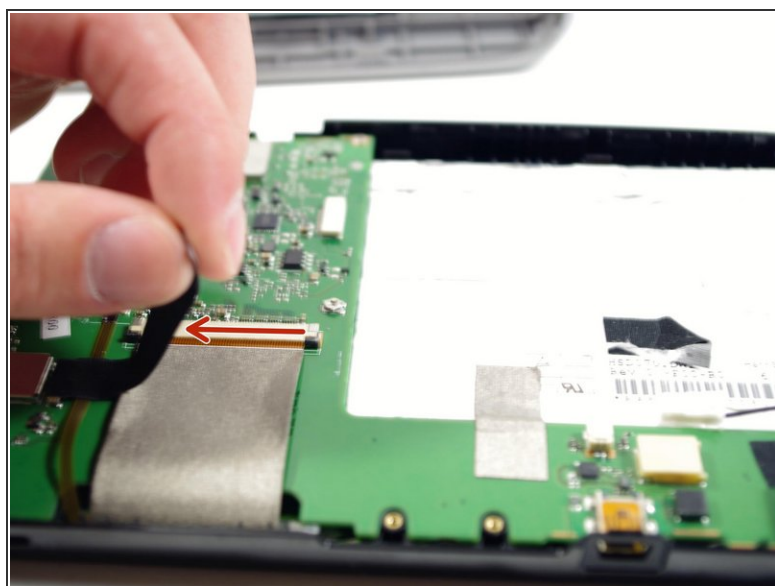
- Place the back panel gently on the table.

Step 9 — Motherboard



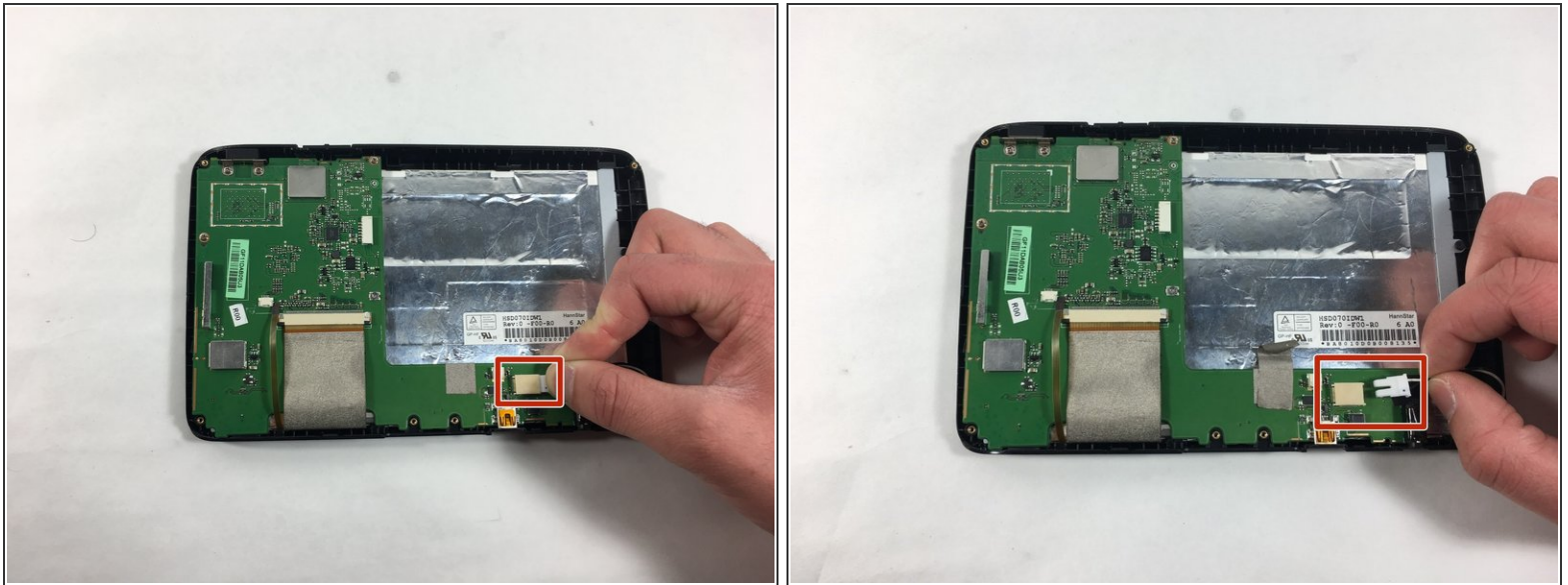
- Unscrew four screws in the top left corner by using Phillips #0 size screwdriver.

Step 10



- Remove all the electrical tapes from different places as indicated.

Step 11



- Remove the white clip attached with black and white wires.
- ⚠ Carefully remove the clip by pulling it to the opposite side from the clip.

Step 12



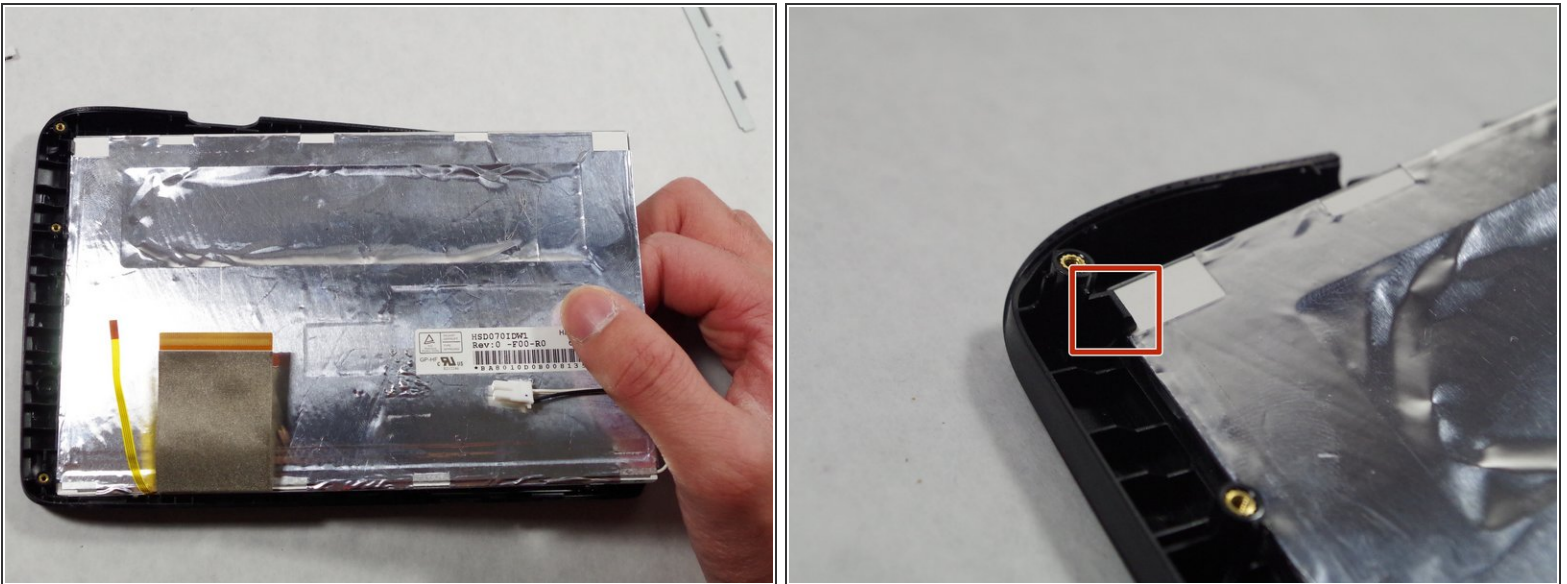
- Unplug the wires by pushing it down and slowly pulling it towards you.
- After unplugging the wires, take the motherboard out.

Step 13 — Touchscreen



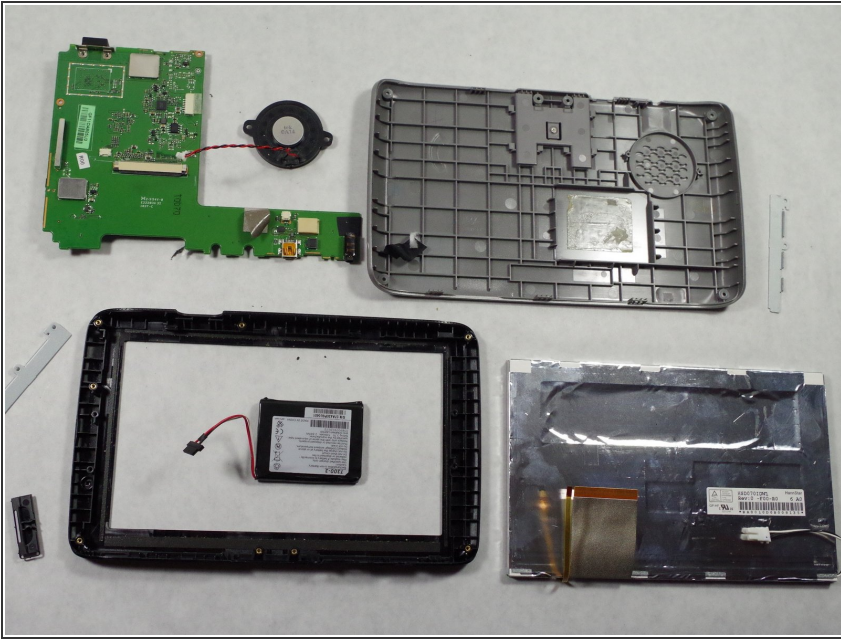
- Unscrew four Phillips #1 screws.
- Remove the two metal pieces on two corners.

Step 14



- Lift touchscreen from the right side.
- ⚠ Slide the touch screen out from the top left corner.

Step 15



- Place the touchscreen gently on the table.

To reassemble your device, follow these instructions in reverse order.