



Canon ELPH Z3 Camera Film Chamber Replacement

The purpose of this guide is to help users who are in need of a film replacement in their camera. This guide provides the necessary steps to help users replace film in their camera.

Written By: Nathan Barros



INTRODUCTION

Film is a crucial component when it comes to cameras. It is necessary to replace the camera's film on a regular basis depending on the usage of the camera. This guide shows the quick and easy steps to show how to properly replace film in your Canon ELPH Z3.



TOOLS:

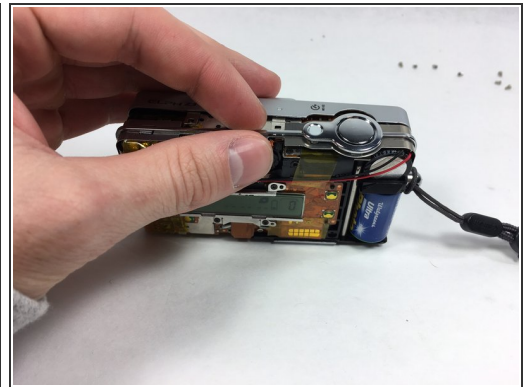
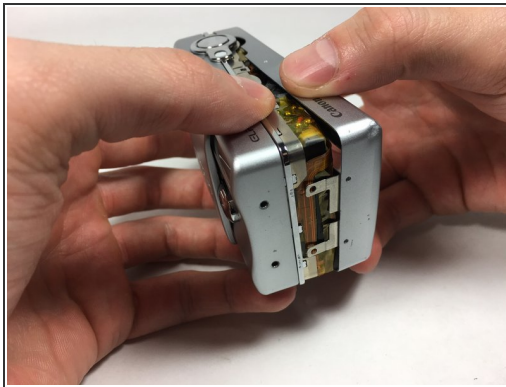
- [Phillips #000 Screwdriver](#) (1)
-

Step 1 — Shutter Button



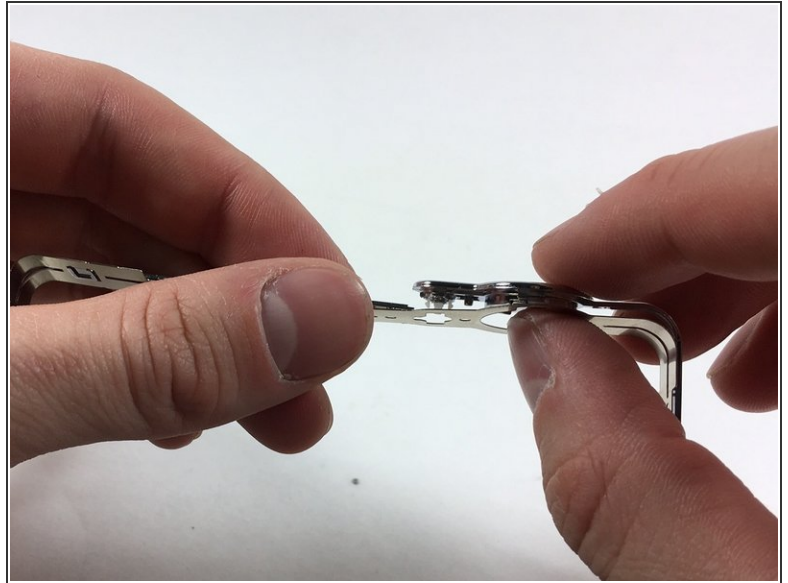
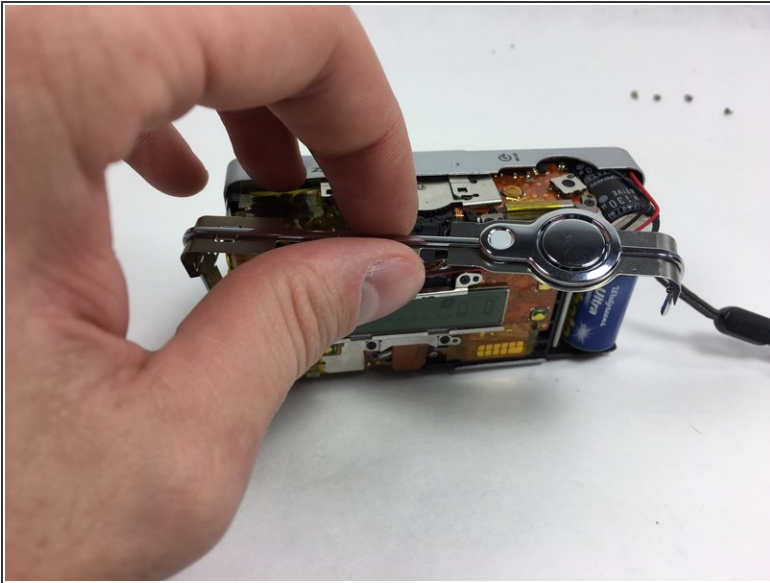
- Unscrew the 7 4.1mm screws around the camera using a PH000 screwdriver.

Step 2



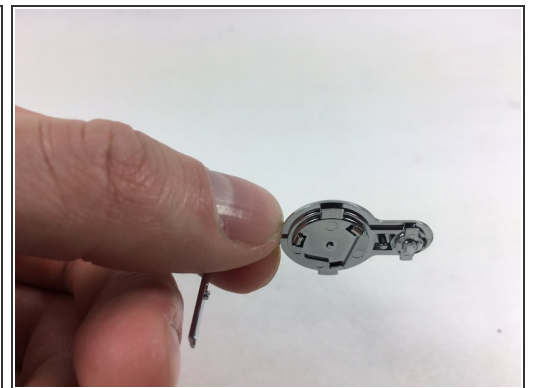
- Split the front and back coverings of the camera.
- Remove the back covering completely.
 - This allows for easier access to the shutter button carrier.

Step 3



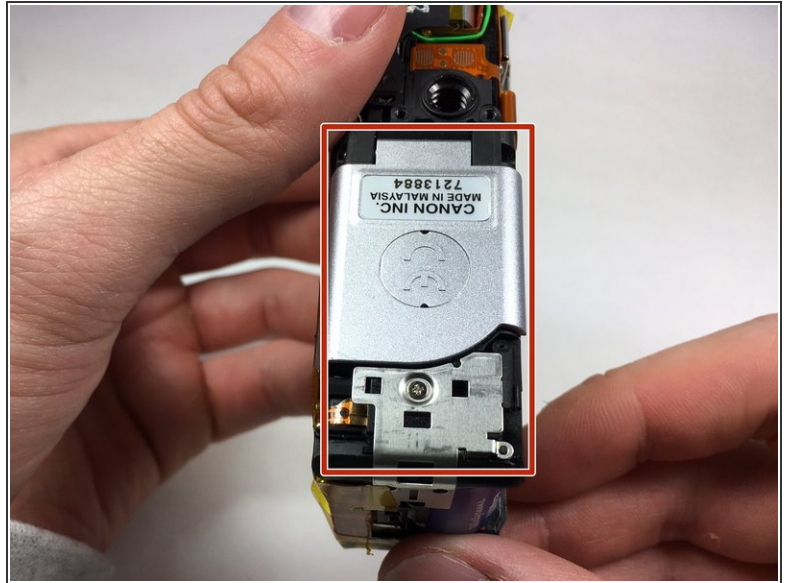
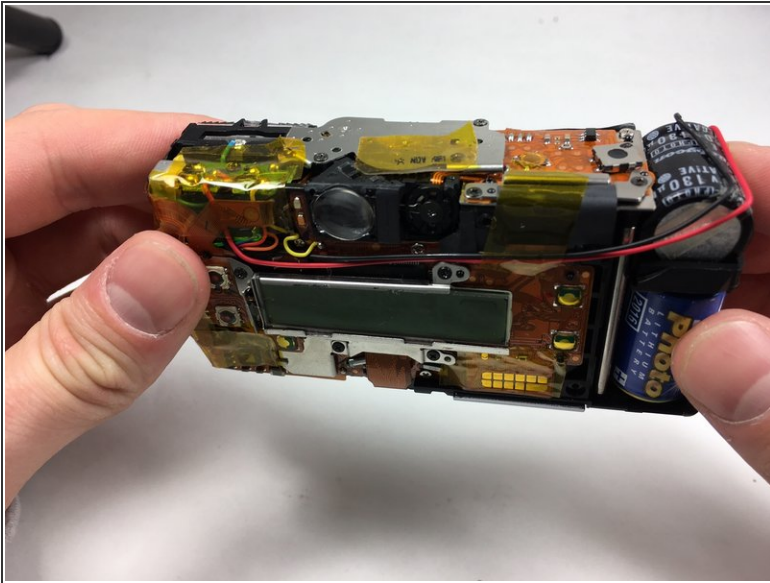
- Slide the shutter button carrier off of the camera.
- Notice shutter button is on the right hand side of the carrier.

Step 4



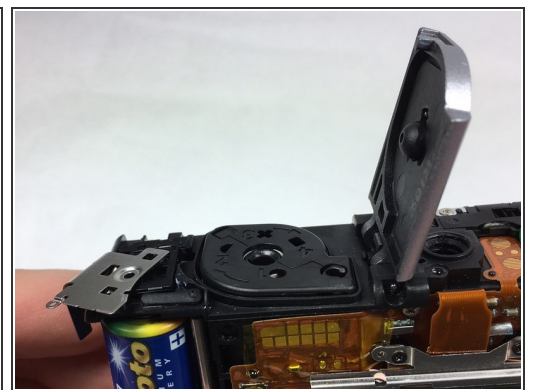
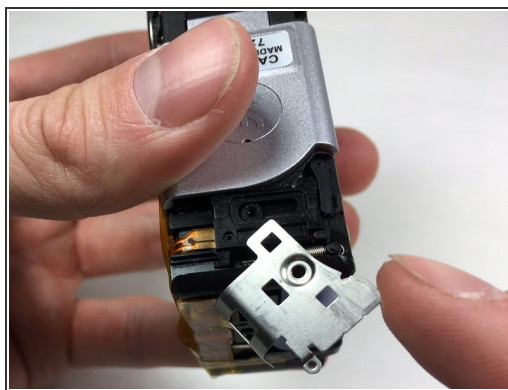
- Press upward on the shutter button from the underside of the carrier by using your thumb.
- Separate the shutter button from the carrier.

Step 5 — Film



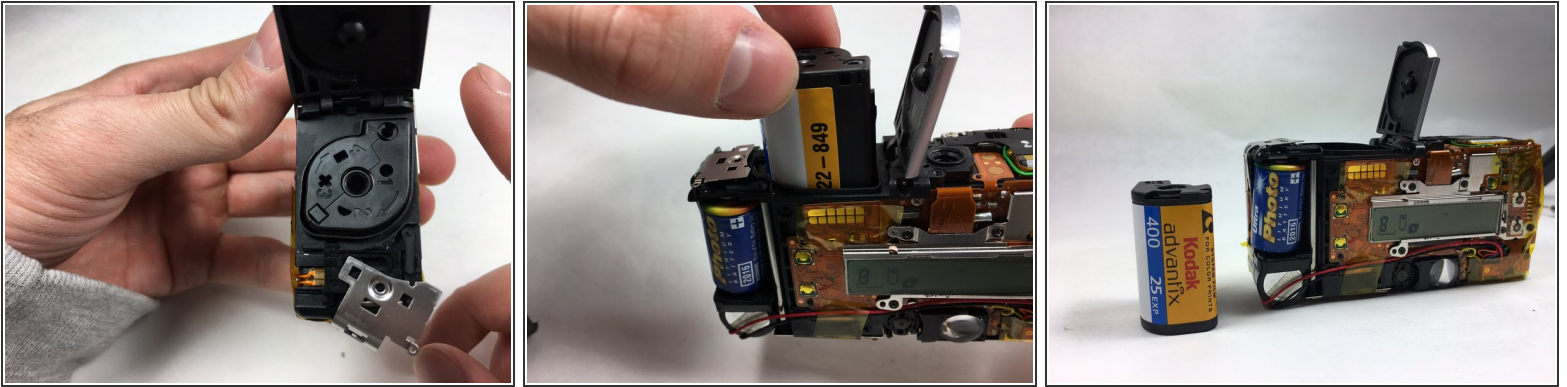
- Separate the front and back coverings of the camera completely.
- Remove both coverings from the body of the camera.
- Flip the camera upside down and focus on the bottom right portion.

Step 6



- Unscrew the 4.1mm screw using a PH000 screwdriver.
- Swivel the now loose metal portion to the right.
 - This action will open the film chamber and thus exposing the film.

Step 7



- Press gently on the film using your finger to slightly eject the film.
- Pull the film from the chamber.

To reassemble your device, follow these instructions in reverse order.