



# Chromo Noria Camera Replacement

This guide will help you remove both the front facing and back facing cameras.

Written By: Ryan Rho



---

## INTRODUCTION

This guide will walk you through the necessary steps to replace either camera on the Chromo Noria. Make sure you've got all the necessary tools and a bit of time before beginning!

---

### TOOLS:

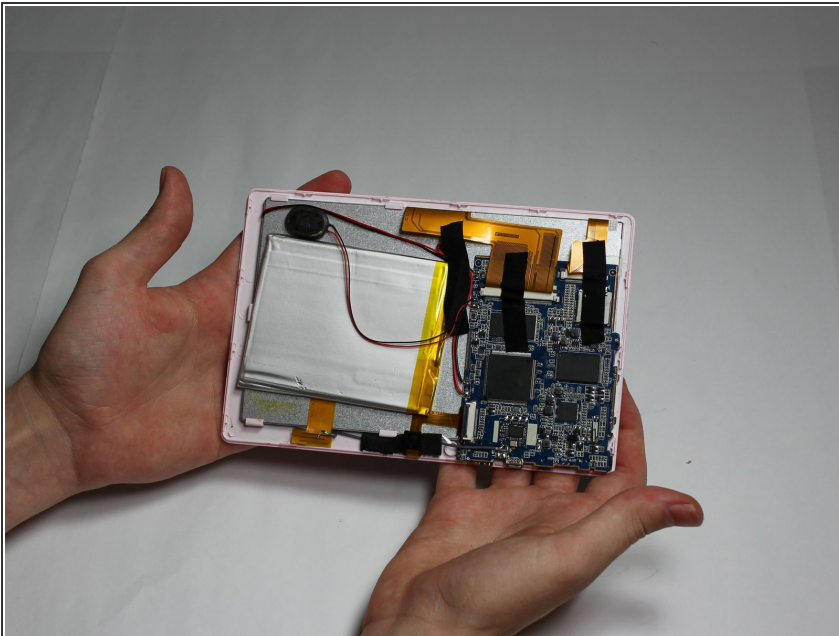
- [iFixit Opening Tools](#) (1)
  - [Tweezers](#) (1)
-

## Step 1 — Back Panel



- Insert your Plastic Opening Tool into the crease between the front panel and back panel.
- Slide the Opening Tool around the entire device. As you progress, you should see the device open.

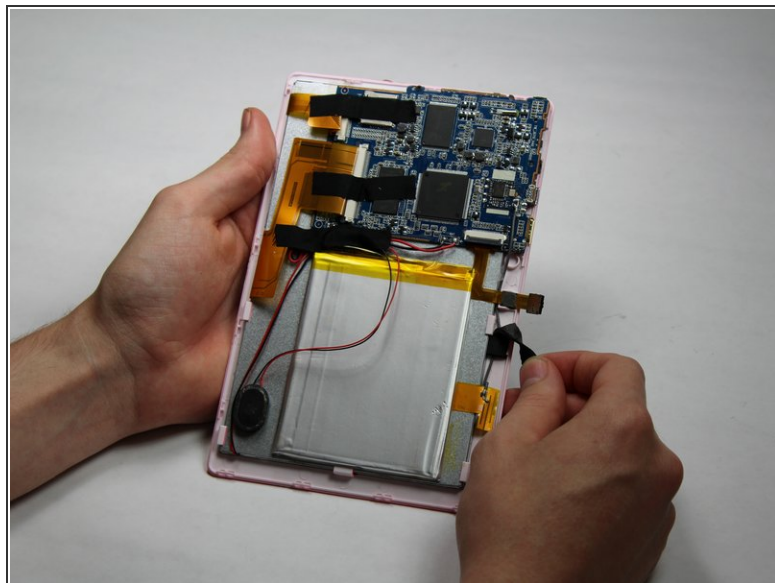
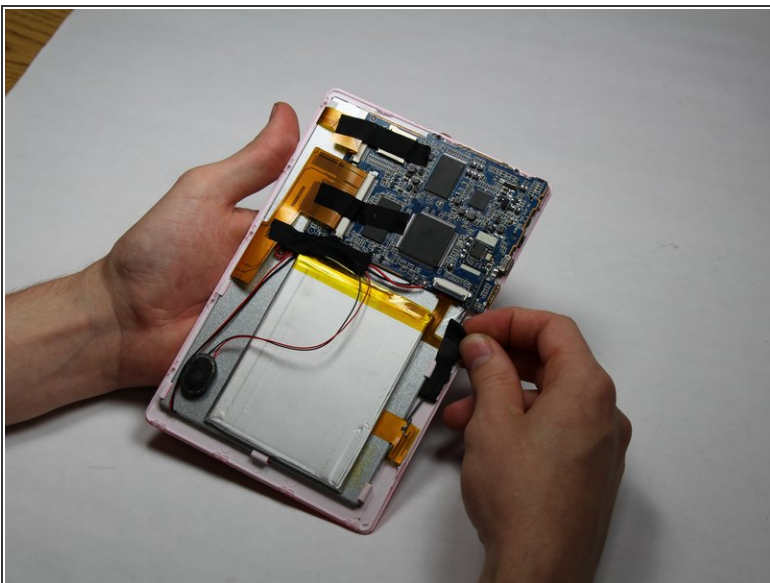
## Step 2



- Carefully turn the device over.
- Lay the back panel aside so you can see the device's parts.

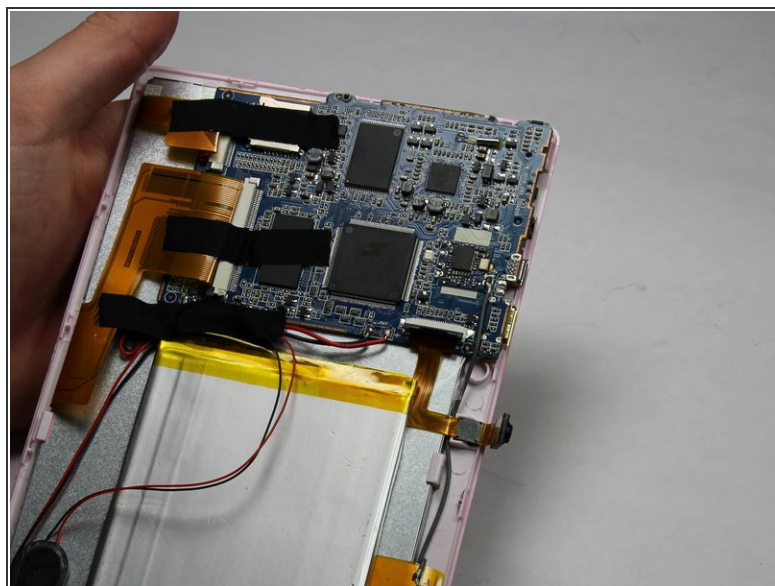
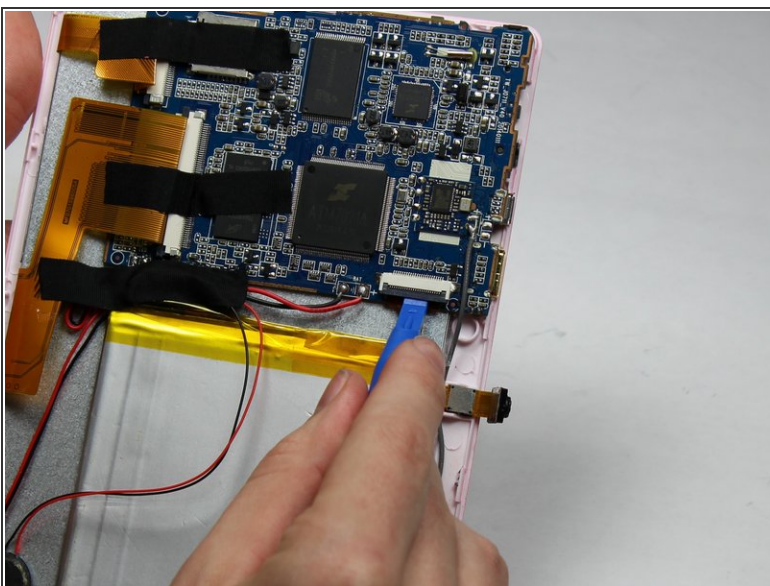


## Step 3 — Camera



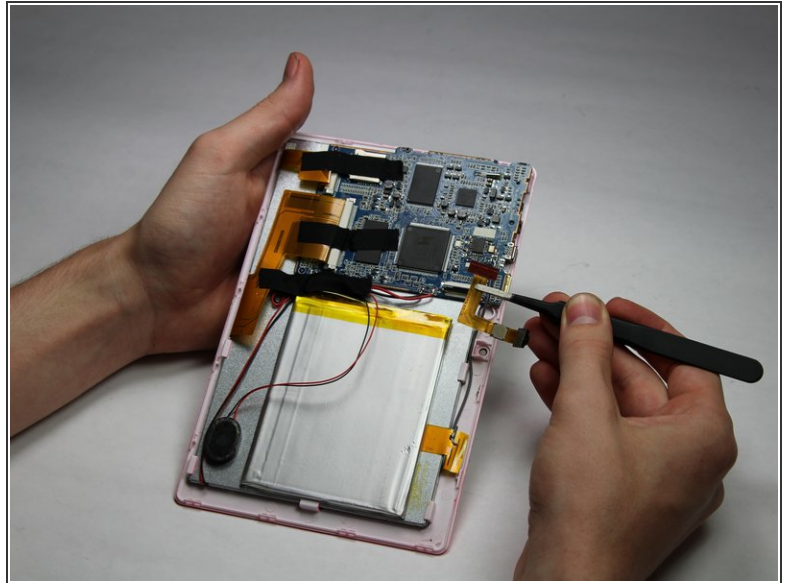
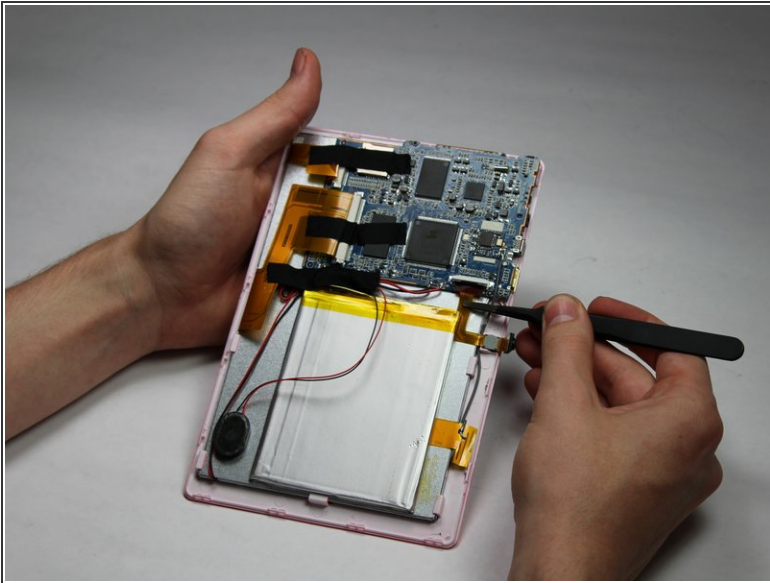
- Carefully detach one side of the black tape from the board.

## Step 4



- Using a small plastic opening tool, flip the black connector up until it makes "tick" sound.
- Now, the flexing cable is ready to be removed.

## Step 5



- Using a pair of tweezers, hold the flexing cable right below the black connector.
- Gently pull the flexing cable out of the connector while balancing the other side of the device with another hand.

To reassemble your device, follow these instructions in reverse order.