



Toshiba Portege 3110CT Keyboard Replacement

Replace your damaged or broken keyboard to restore functionality to the keys.

Written By: Spencer Gamble



INTRODUCTION

Keybaord replacement for this laptop is simple and only requires a screwdriver and a plastic opening tool.



TOOLS:

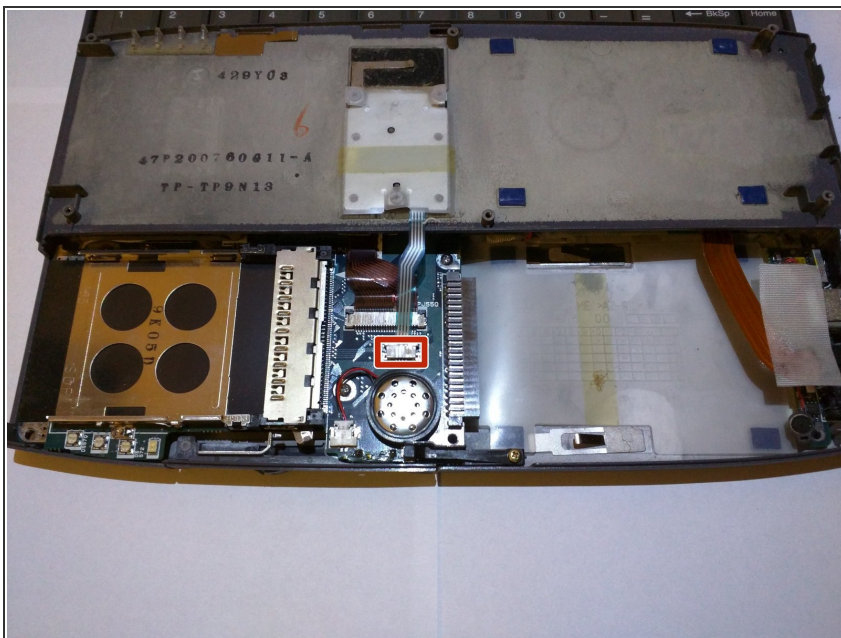
- [Phillips #0 Screwdriver](#) (1)
-

Step 1 — Keyboard



- Begin by removing the battery and flipping the laptop over to see the screws
- Using a phillips head screwdriver to remove the screws that secure the back

Step 2



- Flip the laptop back over and open it up carefully
- Lift up the bottom panel where the mouse click buttons are
- ⚠ Lift up slowly as simply flip it up and rest it on the keyboard as not to damage the ribbon cable connecting it
- Using the spudger disconnect the ribbon cable connected to the bottom of the panel

Step 3



- Using the same size phillips as before remove the two screws that hold the keyboard in place
- Lift the keyboard up and slide it downwards and out.

To reassemble your device, follow these instructions in reverse order.