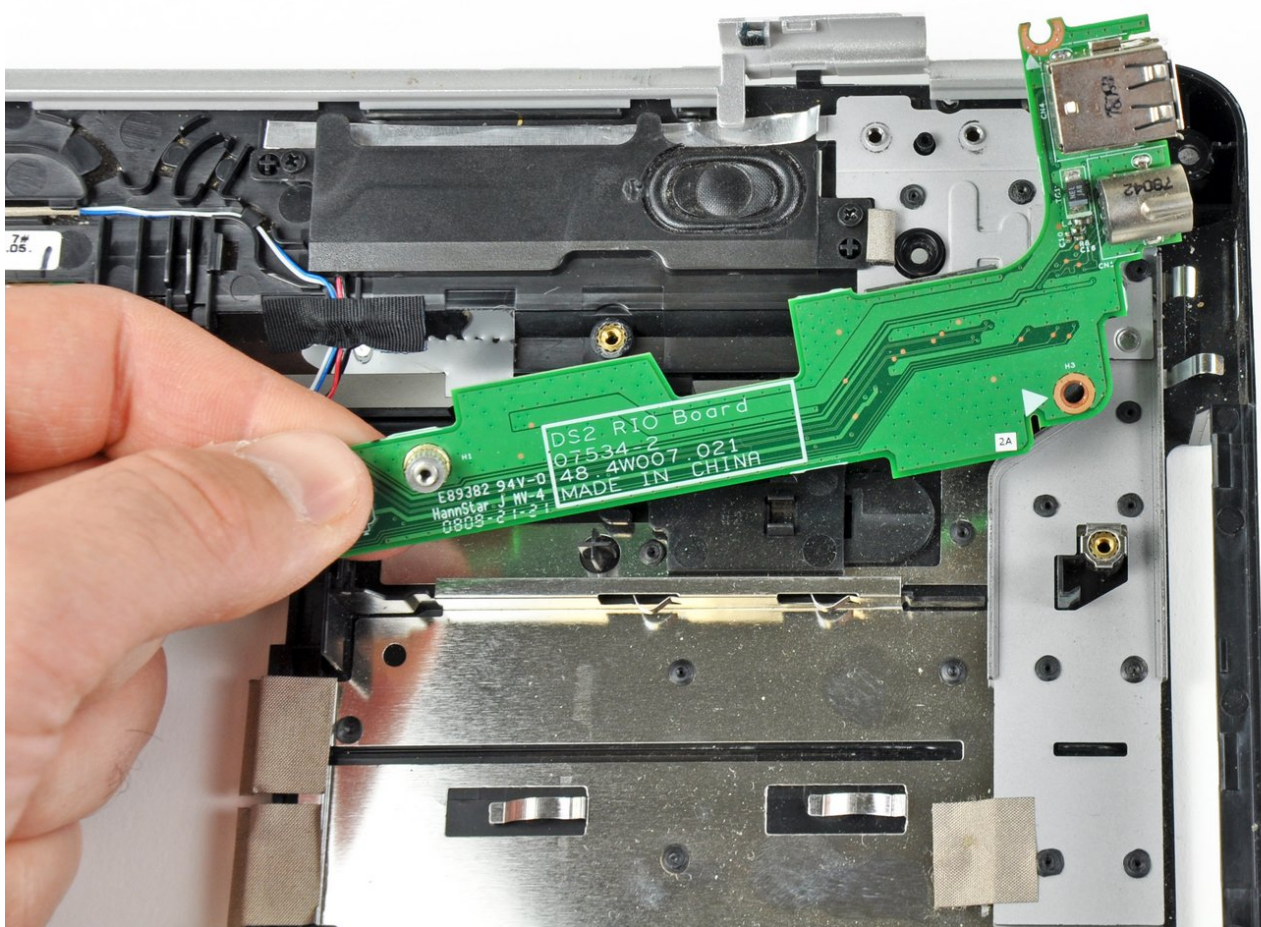




Dell Inspiron 1525 S-Video Board Replacement

Use this guide to help you replace the S-Video...

Written By: Miroslav Djuric



INTRODUCTION

Use this guide to help you replace the S-Video Board in a Dell Inspiron 1525.

TOOLS:

- [Arctic Silver ArctiClean](#) (1)
 - [Arctic Silver Thermal Paste](#) (1)
 - [Phillips #1 Screwdriver](#) (1)
 - [Flathead 3/32" or 2.5 mm Screwdriver](#) (1)
 - [Spudger](#) (1)
-

Step 1 — Battery



- Locate the battery release switch on the bottom of the laptop.

Step 2



- Slide the battery release switch away from the lock symbol until you hear the battery click.
- Slide the battery towards the back of the laptop until it comes free.

Step 3 — Central Control Cover



- Remove the two 4.00 mm Phillips #1 screws from the battery tray.

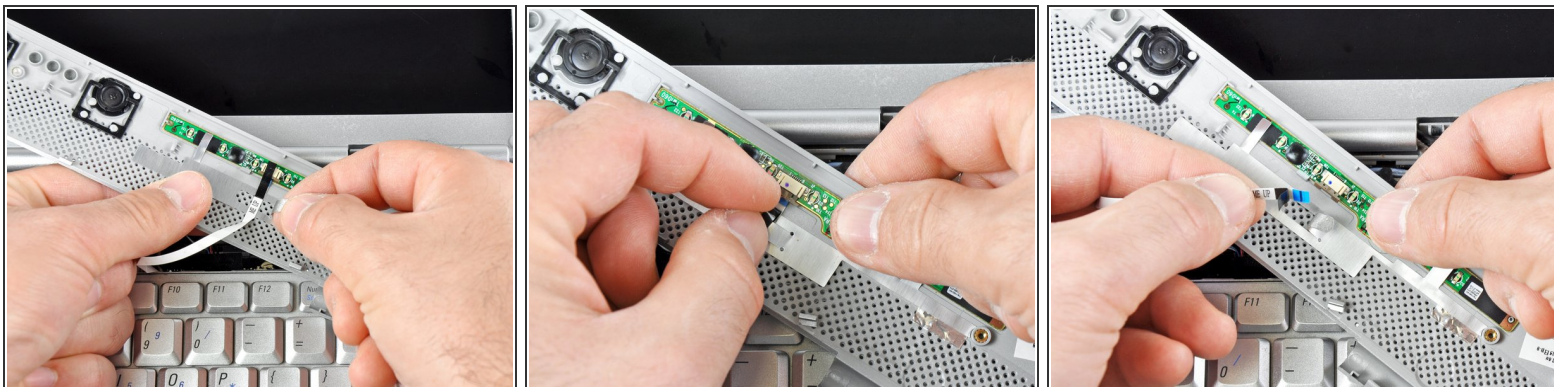
Step 4



- Insert the flat end of a spudger into the slot on the right side of the central control cover and pry it up.
- Carefully pull the central control cover up along its edges.

⚠ Do not attempt to completely remove the cover, as it is still attached via a ribbon cable.

Step 5



- Peel back the silver tape securing the ribbon cable to the cover.
- Pull the small brown latch on the ribbon cable connector out.
- Disconnect the ribbon cable to completely free the central control cover.

Step 6 — Keyboard



- Remove the two 5.75 mm Phillips #1 screws securing the keyboard to the laptop.
 - Gently slide the keyboard towards the display until the tabs on its front side are free.
- ⚠ Do not force the keyboard too far forward or attempt to remove it yet, as there is still a ribbon cable connected to it.**

Step 7



- Use a spudger to gently lift the ribbon cable retaining flap.
- Disconnect the ribbon cable.
- Shift the keyboard sideways enough to free one side from its retaining tab. Then lift the keyboard away from the laptop.

Step 8 — Hard Drive



- Remove the two 3.60 mm #1 Phillips screws securing the hard drive and hard drive tray.
- Slide the hard drive and hard drive tray out of the laptop.

Step 9 — Optical Drive



- Remove the 5.75 mm #1 Phillips screw securing the optical drive.
- Pull the optical drive straight from the laptop.

Step 10 — Bottom Cover



- Remove/loosen the eight 4.80 mm Phillips #1 screws securing the bottom panel.
 - The screws may only need to be loosened, as they are generally retained by plastic washers.
- Remove the bottom panel.

Step 11 — Display Assembly



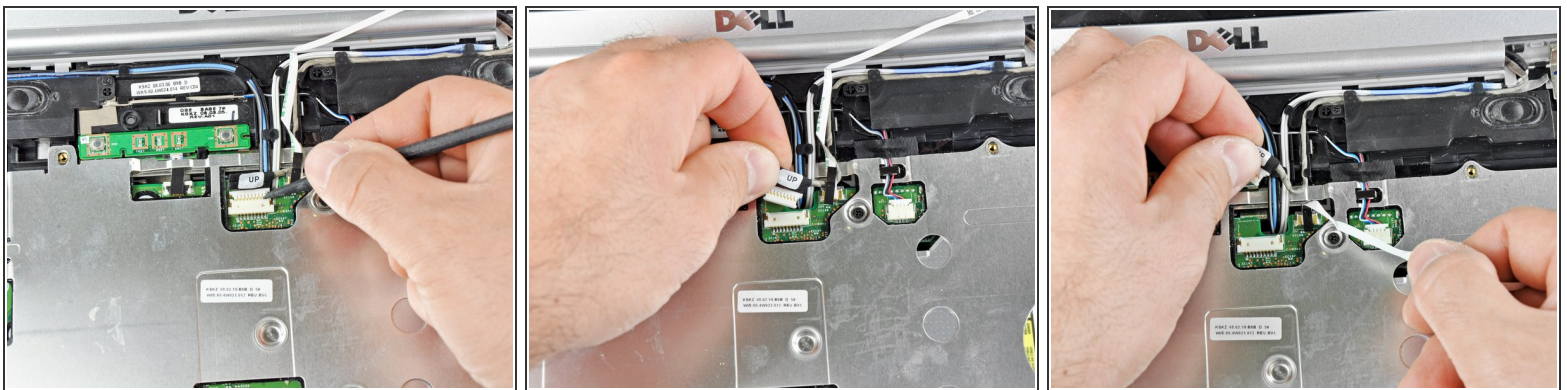
- Disconnect the five antennas from their respective cards.
- De-route the antennas from their routing retainers.

Step 12



- Remove the two 5.70 mm Phillips #1 screws securing the display assembly to the bottom case half.
- ⓘ The screw holes will be denoted by an embossed "D" by the hole.

Step 13



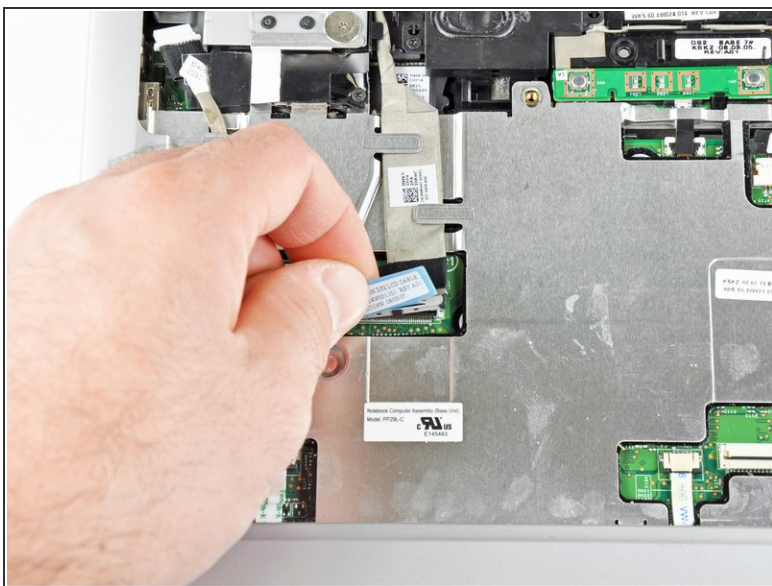
- Use the flat end of a spudger to push the camera connector out of its socket. Alternate pushing on either side to evenly remove the connector.
- Carefully release the connector from its retaining tabs.

Step 14



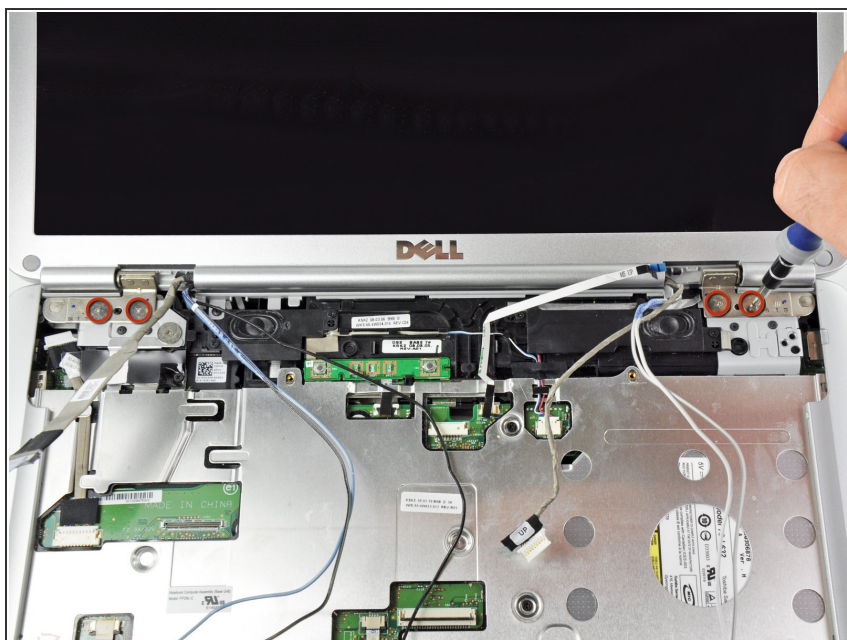
- Push the antenna wires up through their hole in the bottom case half.
- Release the antennas from their retaining tabs on the upper case.

Step 15



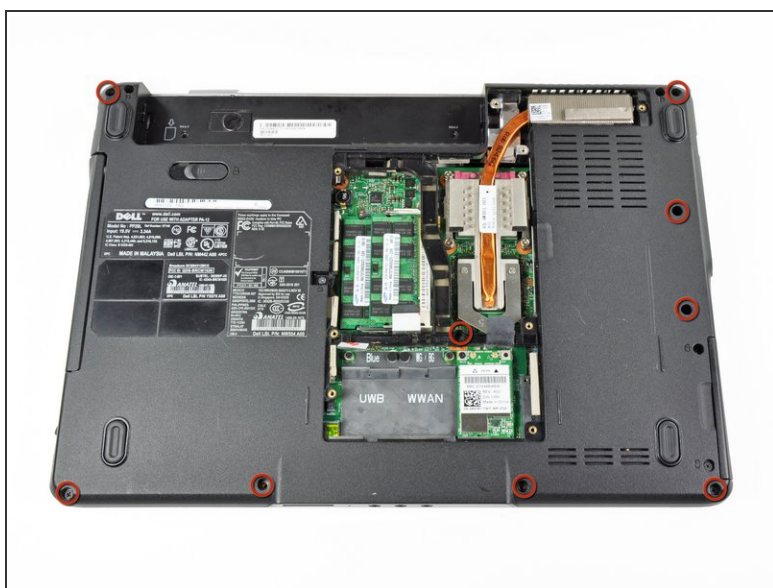
- Disconnect the flat LCD ribbon cable by pulling it up by the tab.
- Free the ribbon cable from its retaining clips.

Step 16



- Remove the four 3.45 mm Phillips #1 screws securing the display assembly to the laptop chassis.
- ⚠ Support the display assembly as you remove these screws to prevent damage to the screw and hole threads.
- Remove the display assembly from the laptop.

Step 17 — Upper Case



- Remove the nine 5.75 mm Phillips #1 screws on the bottom side of the laptop.
- Remove the two 5.70 mm Phillips #1 screws on the top side of the laptop.

Step 18



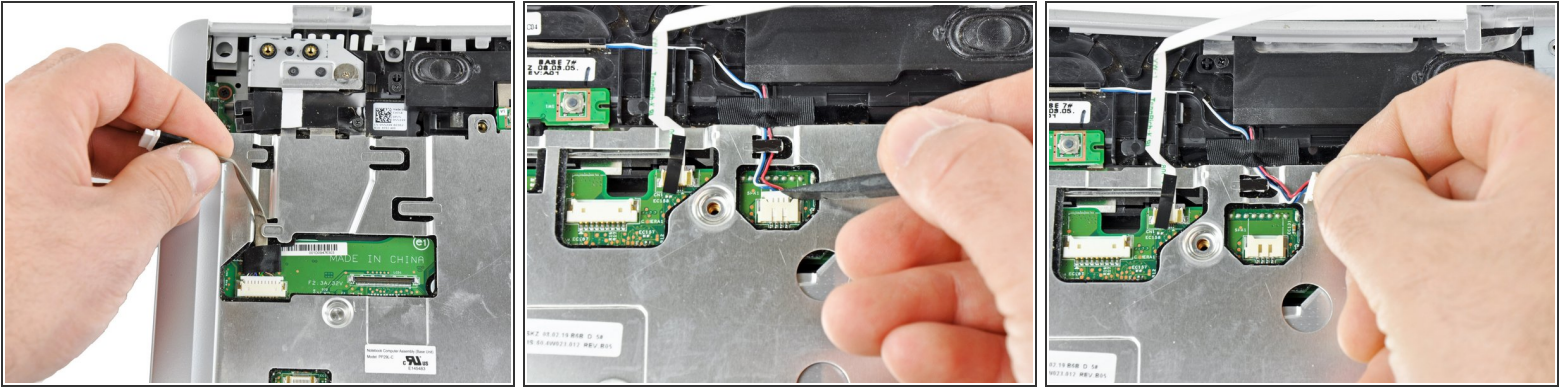
- Use a spudger to pull the touch pad connector latch towards the ribbon cable.
- Pull the ribbon cable out of the connector.

Step 19



- Use a spudger to pull the device status LED connector latch towards the ribbon cable.
- Disconnect the device status LED ribbon cable.

Step 20



- Release the ribbon cable in the upper left corner of the laptop from its retaining tabs.
- Use a spudger to unplug the speaker connector at the top center of the laptop.
- De-route the speaker wires from their retaining tabs.

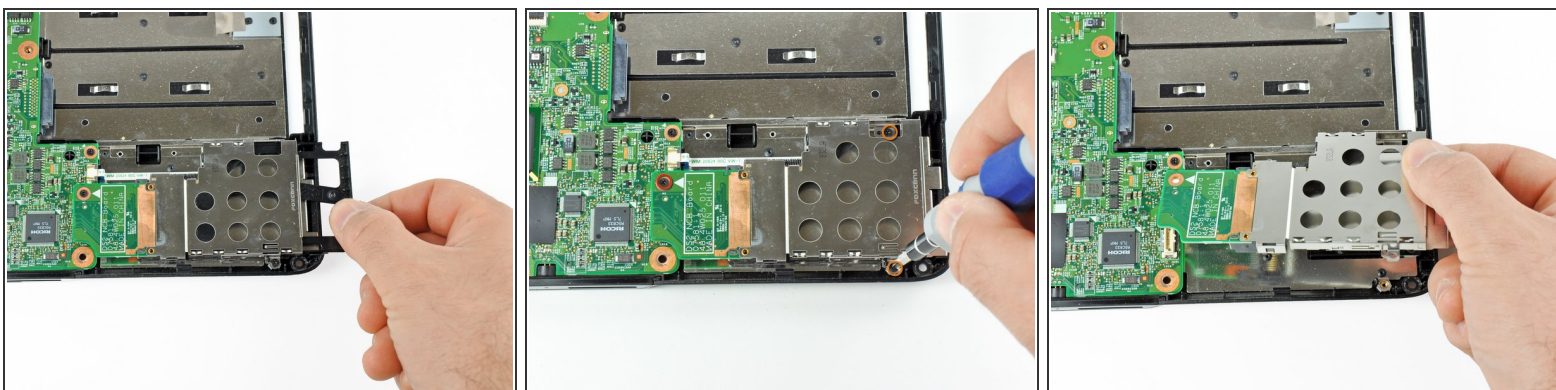
Step 21



- Use the flat end of a spudger to begin lifting the upper case at its front edge.
- Lift the front edge of the case up until it comes free.

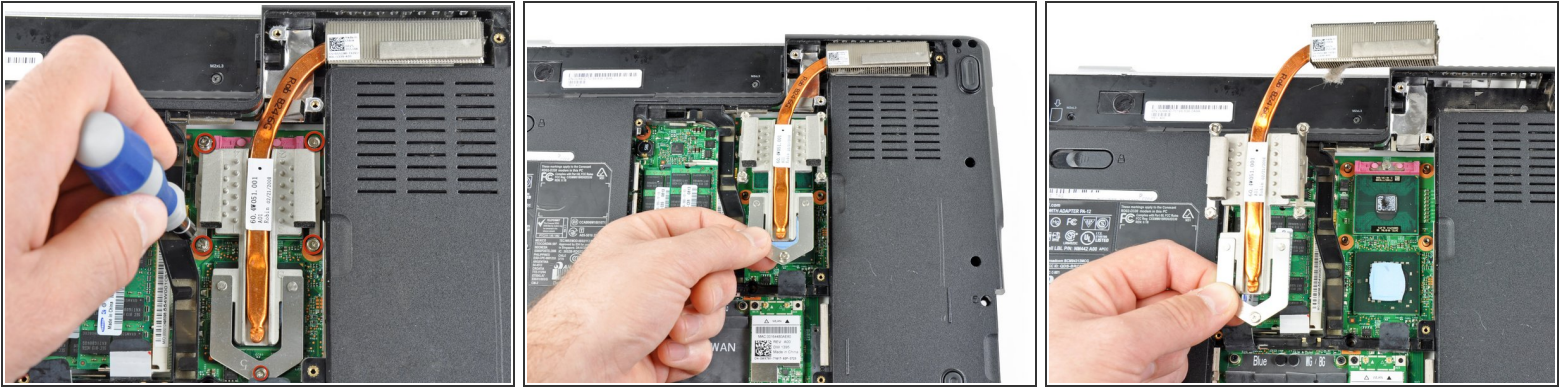
⚠ Work slowly and be sure not to get any cables caught in the upper case holes and guides.

Step 22 — ExpressCard Cage



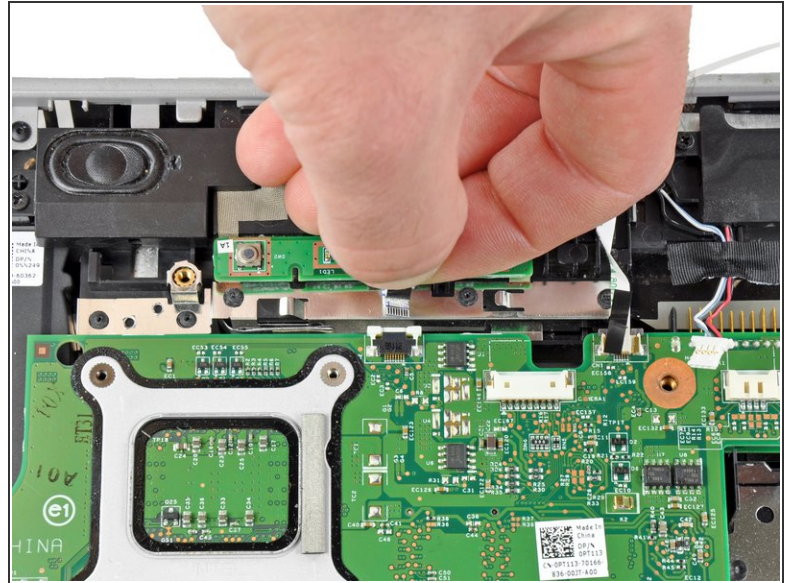
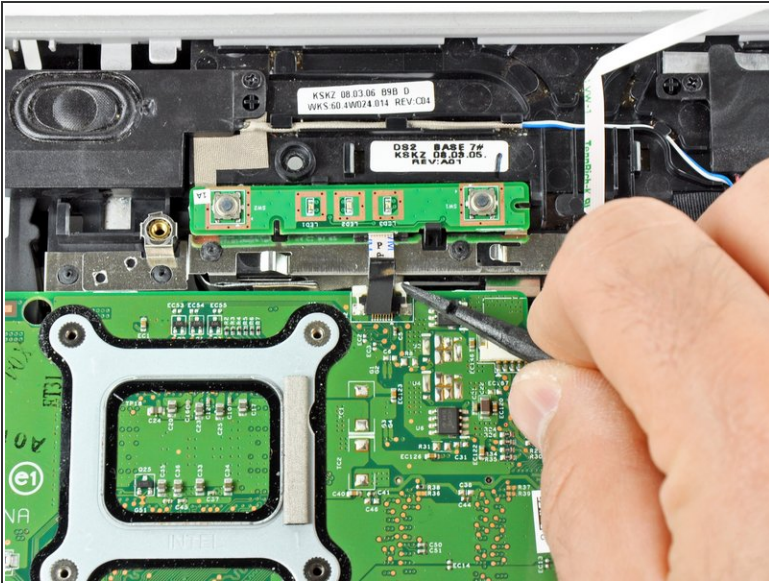
- Eject your ExpressCard or ExpressCard dust shield if you want to transfer it to the new ExpressCard cage. Eject the card by pressing it in until it clicks, releasing it, then sliding it out.
- Remove the 3.80 mm Phillips #1 screw securing the ExpressCard cage.
- Remove the two 3.70 mm Phillips #1 screws securing the ExpressCard cage.
- Lift the ExpressCard cage out of its connector.

Step 23 — Heat Sink



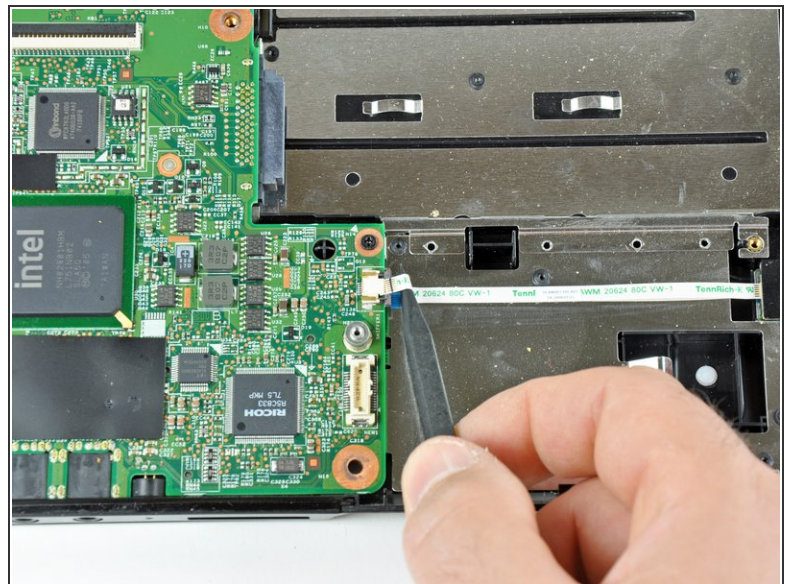
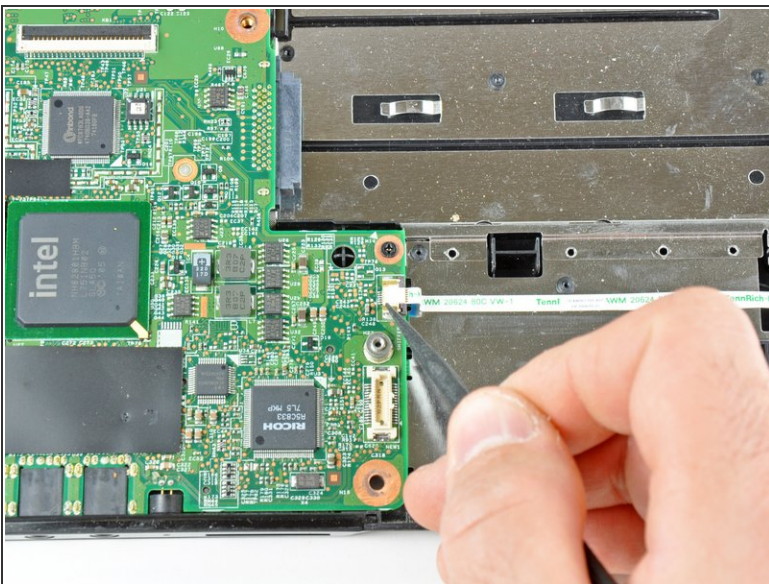
- Loosen the five #1 Phillips screws securing the heat sink and clean it with compressed air
 - ⓘ These screws are attached to the heat sink assembly.
- Gently lift the heat sink from side indicated in the picture.
 - ⓘ The heat sink may feel like it is glued to the chips because of the thermal paste. Gently wiggle the heat sink back and forth to help break it free.
- ⓘ Be sure to thoroughly clean off the old thermal paste and apply new thermal paste before reinstalling the heat sink. Follow our [thermal paste application guide](#) for detailed instructions.

Step 24 — Motherboard



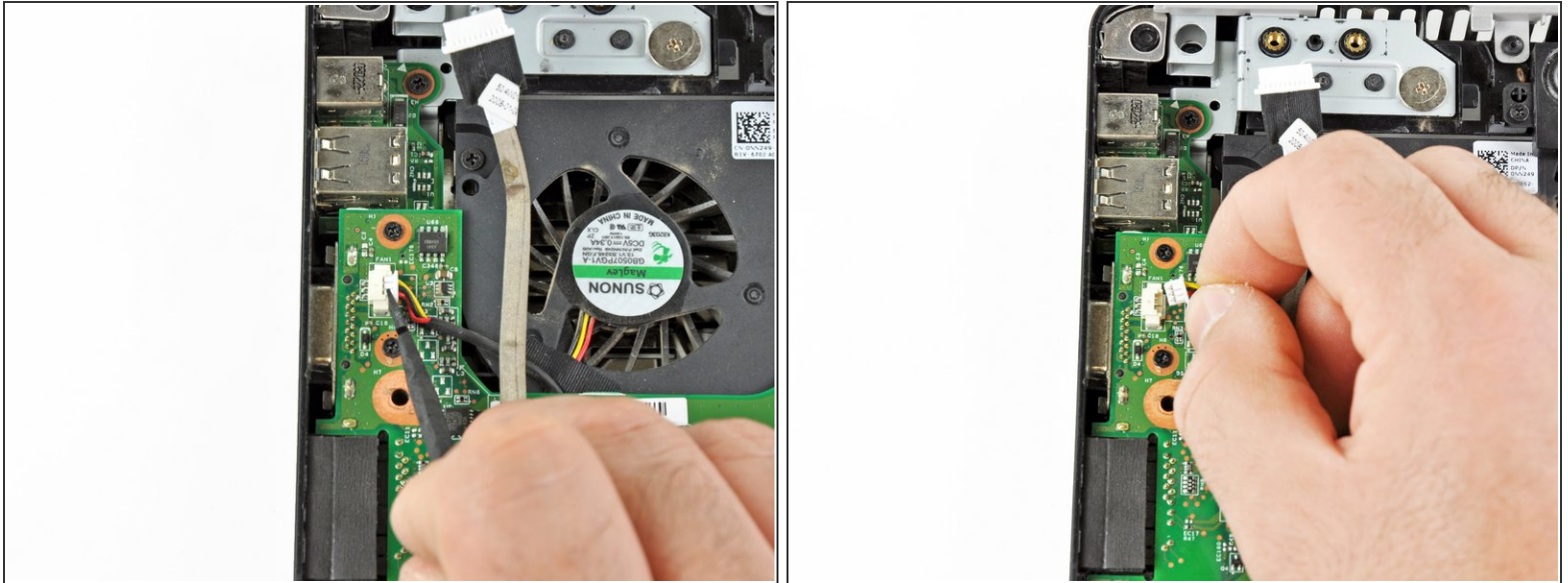
- Use a spudger to push the retaining latch of the central control button connector towards its cable.
- Pull the cable out of the connector.

Step 25



- Pull the retaining latch for the wireless sniffer cable out.
- Remove the cable from the connector.

Step 26



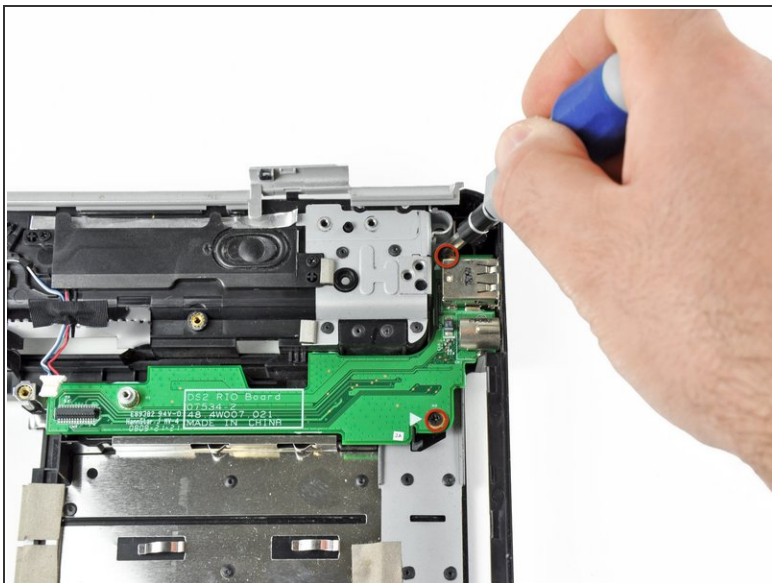
- Disconnect the fan cable connector by pulling it towards the fan with a spudger.

Step 27



- Remove the four 3.70 mm Phillips #1 screws securing the motherboard to the lower case.
 - Gently peel the front bezel off.
 - Lift the motherboard out of the lower case.
- i** If you are installing a new motherboard, make sure to transfer any remaining cables onto the new motherboard, as well as the CPU, RAM, modem, and Wi-Fi card.

Step 28 — S-Video Board



- Remove the two 5.65 mm Phillips #1 screws securing the S-Video board to the lower case.
- Remove the S-Video board.

To reassemble your device, follow these instructions in reverse order.