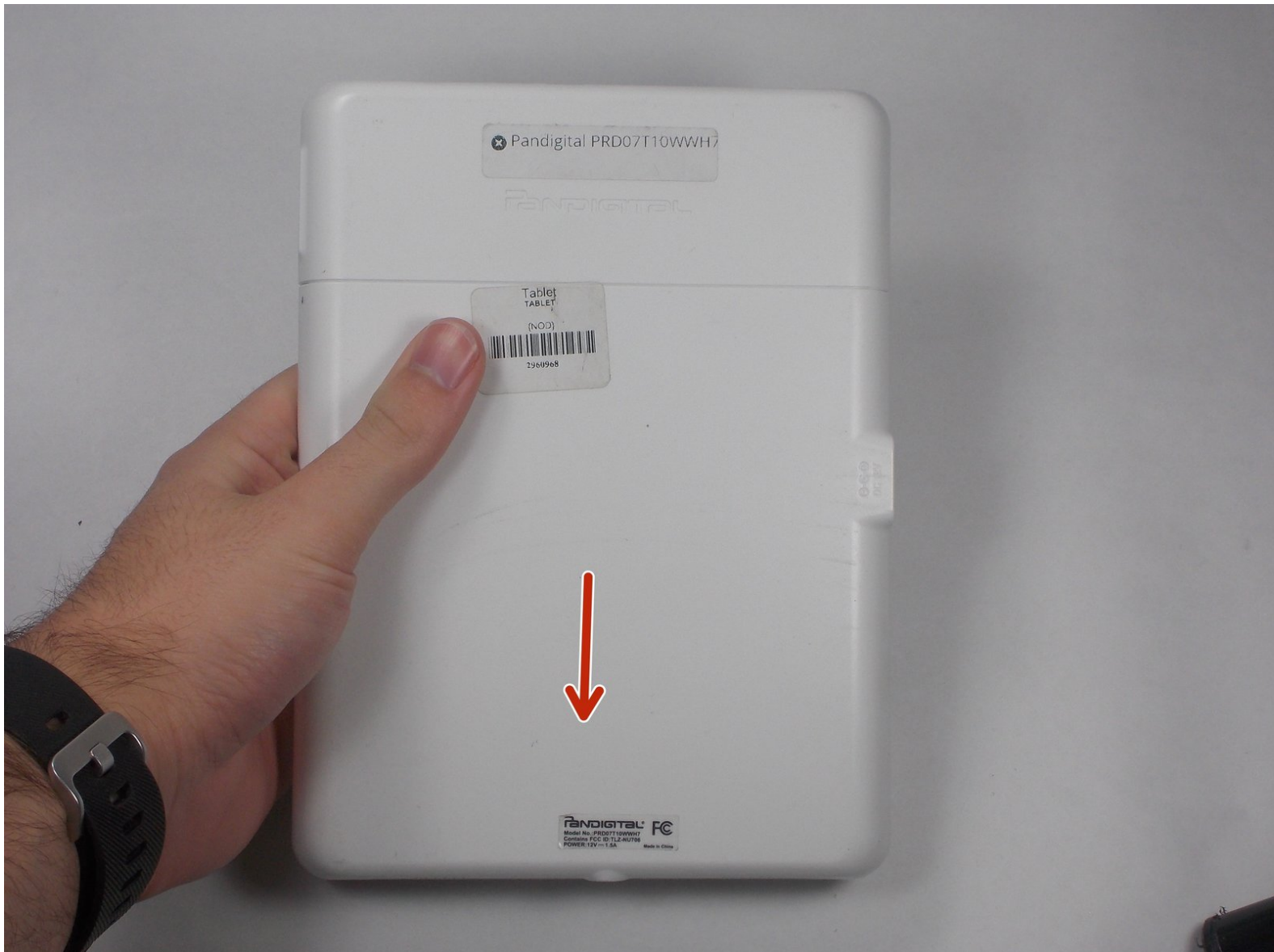




Pandigital Novel PRD07T10WWH7 SD Card Replacement

In this guide, you will replace the SD card in the Pandigital Novel PRD07T10WWH7.

Written By: Carl Weber



INTRODUCTION

You should try to replace the SD card if you want to get more memory. Also, you should try this if you are experiencing any problems with things not being saved correctly, as it could be the result of a faulty SD card.



TOOLS:

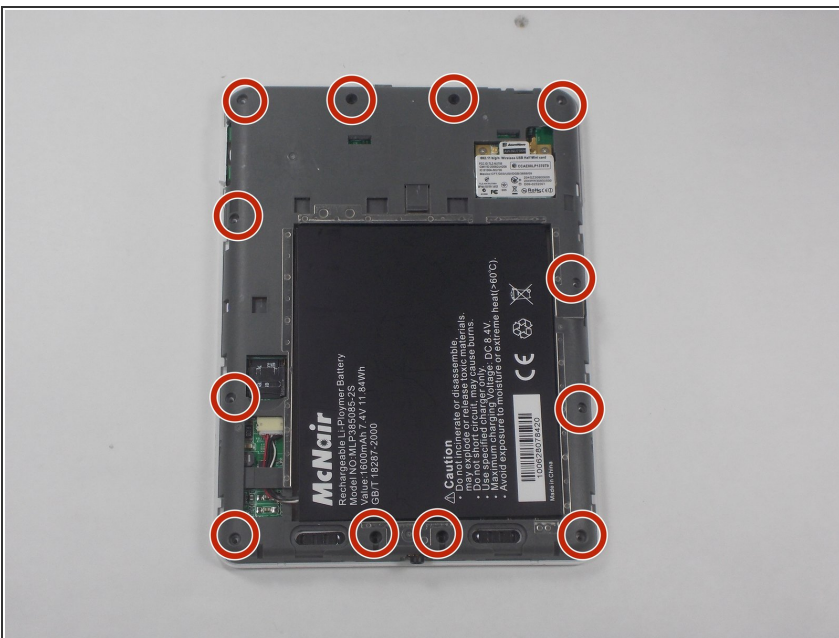
- [iFixit Opening Tools](#) (1)
 - [JIS Driver Set](#) (1)
 - [Metal Spudger Set](#) (1)
-

Step 1 — SD Card



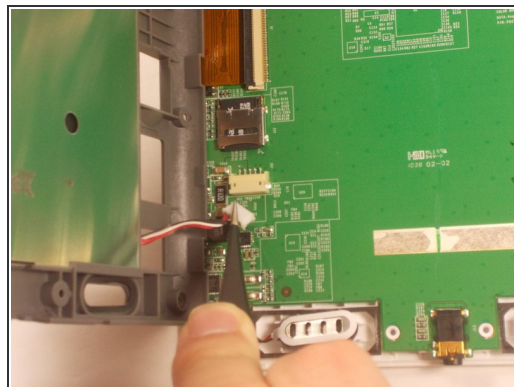
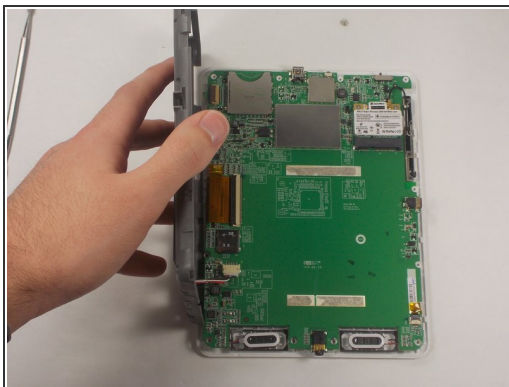
- Remove the two white panels on the back of the device, starting with the bottom one by pushing in and down.
- Then, to remove the top white piece, use the plastic opening tool to start in the middle and remove the clips, working your way around.

Step 2



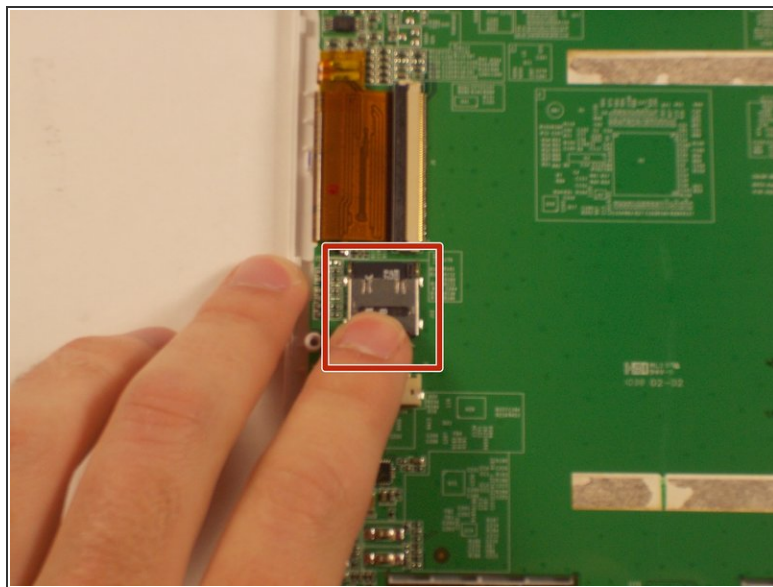
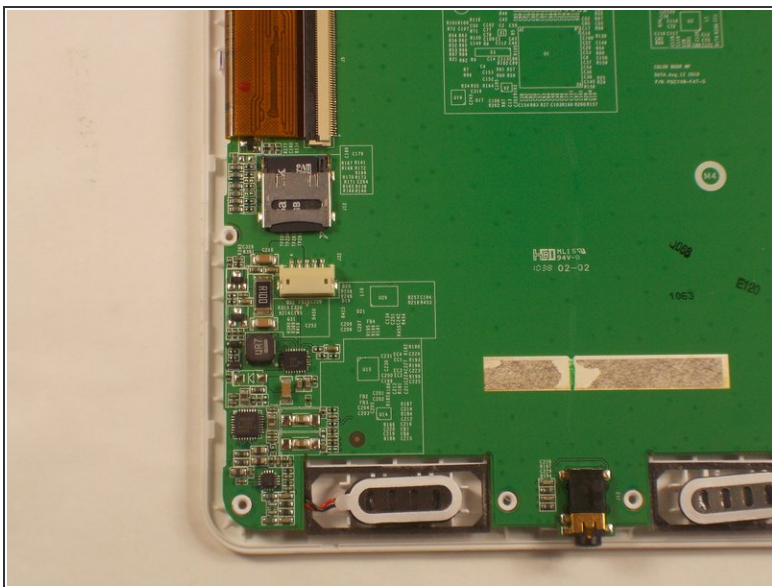
- Using a Phillips #0 bit, remove the 12 4mm screws.

Step 3



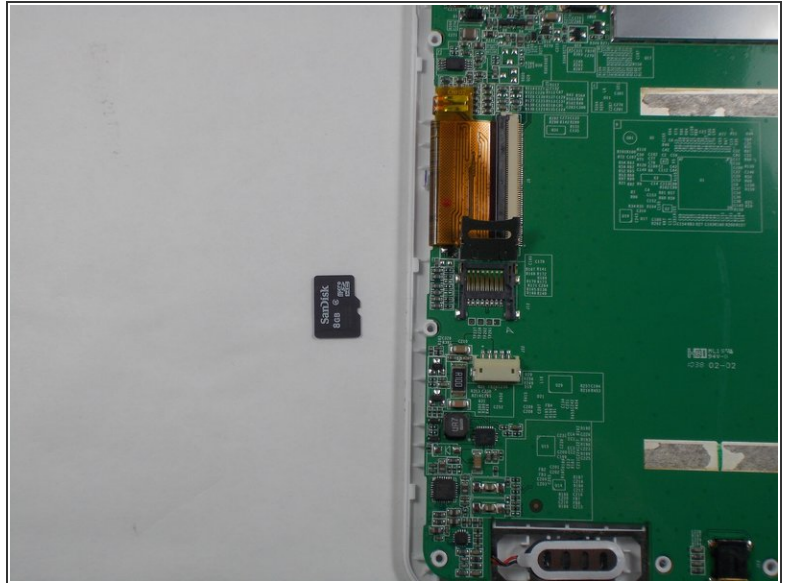
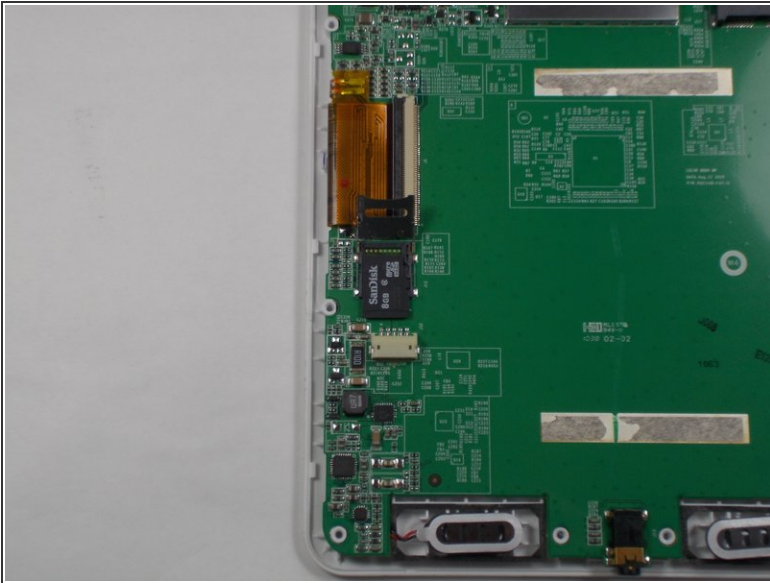
- Pry the gray piece off of the motherboard.
- Make sure the unplug the battery before you fully separate the piece.

Step 4



- Push upwards on the SD card slot to release it.

Step 5



- The SD card can now be removed safely.

To reassemble your device, follow these instructions in reverse order.