



# Minolta QTsi Maxxum View Finder Replacement

This guide will show you how to replace the viewfinder in the Minolta QTsi Maxxum .

Written By: Maya Van Londen



---

## INTRODUCTION

Replace your viewfinder if it breaks so that you can see through the camera to take pictures.

---

### TOOLS:

- [Phillips #00 Screwdriver](#) (1)
  - [Coin](#) (1)
-

## Step 1 — View Finder



- ★ Locate the battery compartment on the bottom panel of camera.
- Use a small coin to untwist and open the batter compartment door.
- ⓘ Twist the coin counterclockwise to unlock the battery compartment door.

## Step 2



- Two batteries are located inside the battery compartment
- Be careful, the batteries inside the compartment are small and easy to lose.
- Remove the two batteries from inside the battery compartment by individually pulling each out.

### Step 3



- i When the batteries are removed from the compartment, one screw will be visible in the bottom of the chamber.
- Unscrew the (1) black Phillips #00 5mm screw from the bottom of the battery chamber.
- ! Be careful when unscrewing the screw because it's small and is easy to lose.

### Step 4



- Remove the (2) black Phillips #00 5mm screws that lie on either side of the view finder.
- ! Be careful because the two screws are small and are easy to lose.



## Step 5



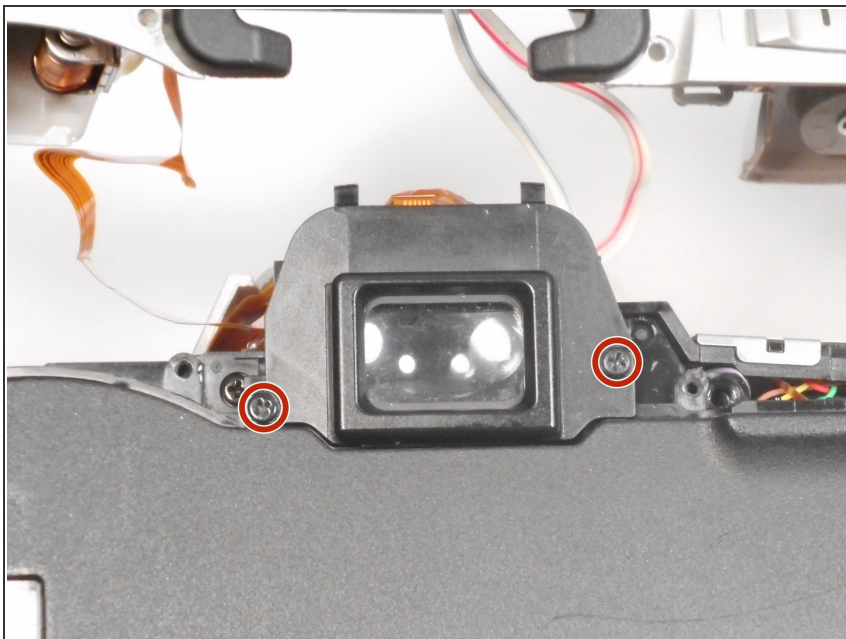
- Remove the (1) black Phillips #00 5mm screw from underneath the flash hood.
- ⚠ Be careful because the screw is small and is easy to lose.

## Step 6



- Once all screws are removed, the top of the camera should come off easily.
- ⚠ Be careful when removing the top, there are wires connected that could be damaged.

## Step 7



- ⚠ The viewfinder will fall when the screws are removed.
- Remove the (2) black Phillips #00 5mm screws that hold the viewfinder.
- ⚠ Be careful because the screws are small and easy to lose.

To reassemble your device, follow these instructions in reverse order.