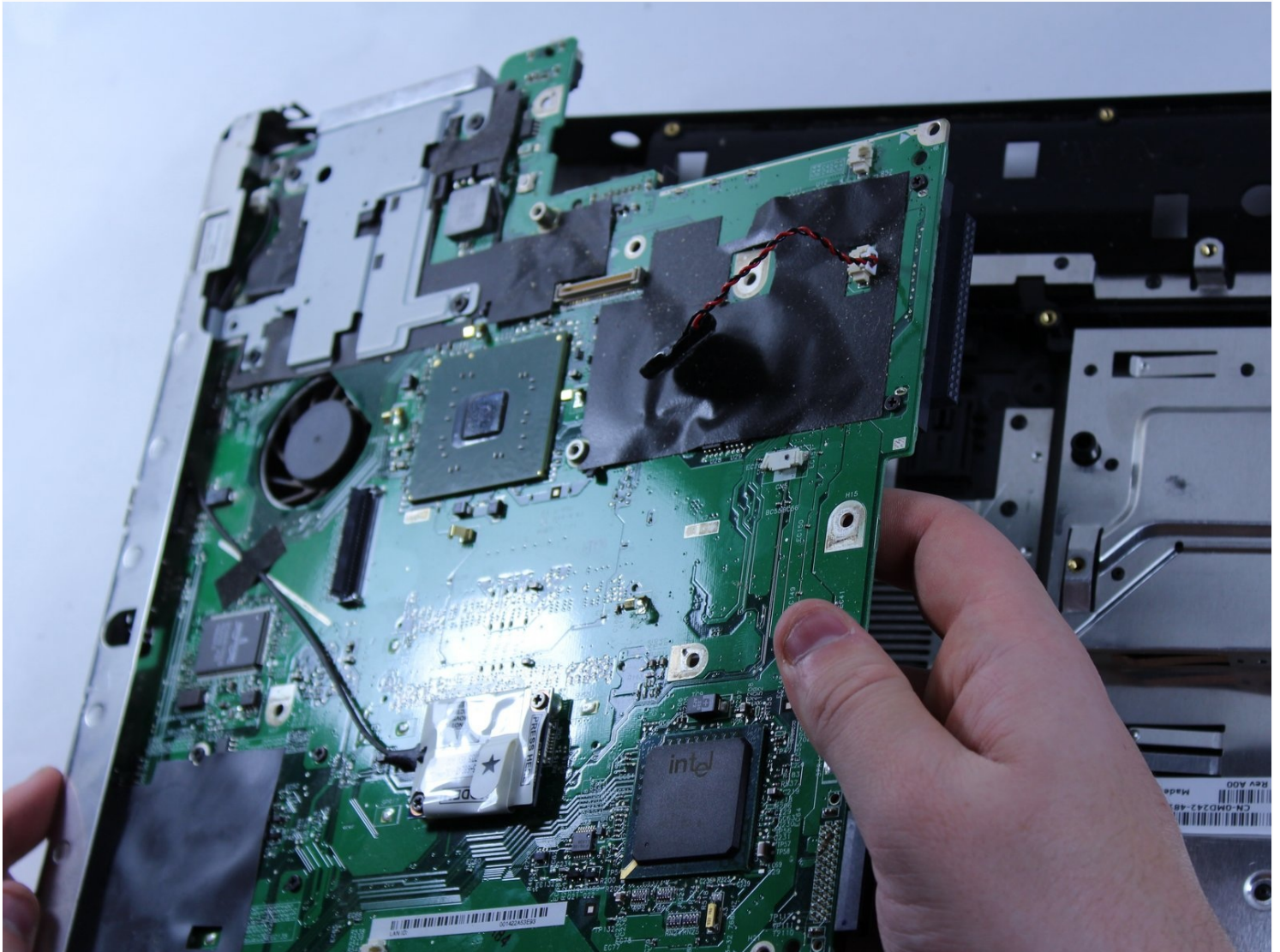




Dell Inspiron B130 Motherboard Replacement

Replacing the motherboard is rarely if ever...

Written By: Patrick McNeil



INTRODUCTION

Replacing the motherboard is rarely if ever needed. Any kind of issue with the computer not starting or it ending up freezing are almost always related to other hardware problems. If you know for a fact that it is not any other pieces of hardware then use this guide to replace the motherboard on your Dell B130.

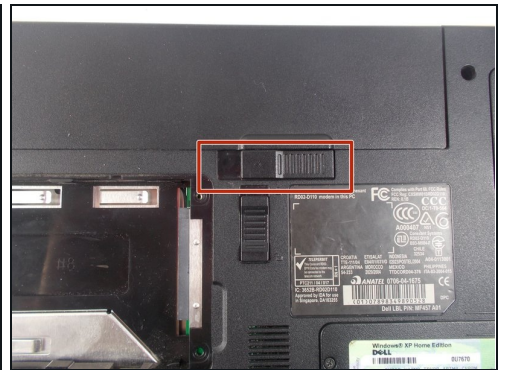
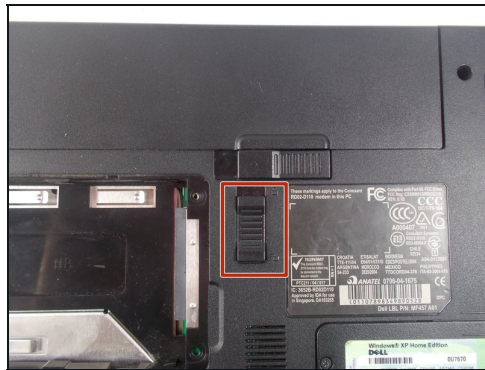
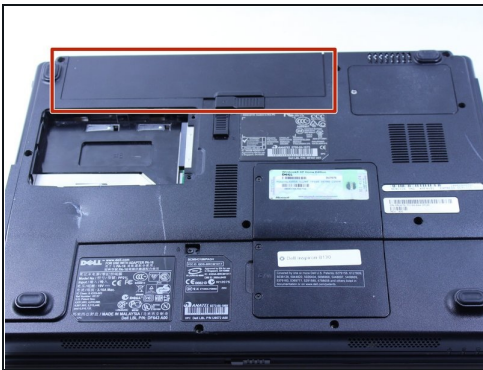
TOOLS:

[iFixit Opening Tool](#) (1)

[Tweezers](#) (1)

[Phillips #0 Screwdriver](#) (1)

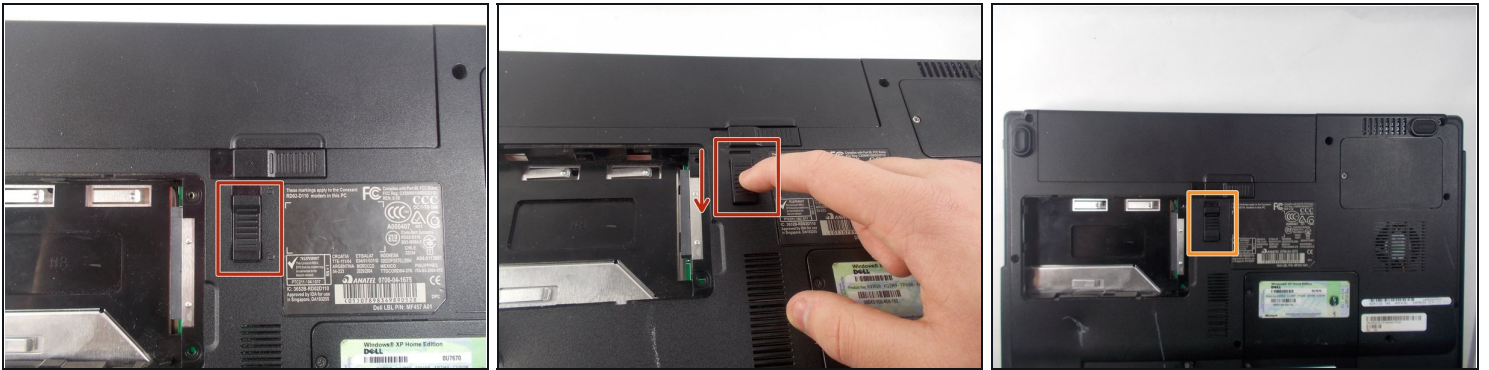
Step 1 — Battery



 First, make sure your computer is turned off.

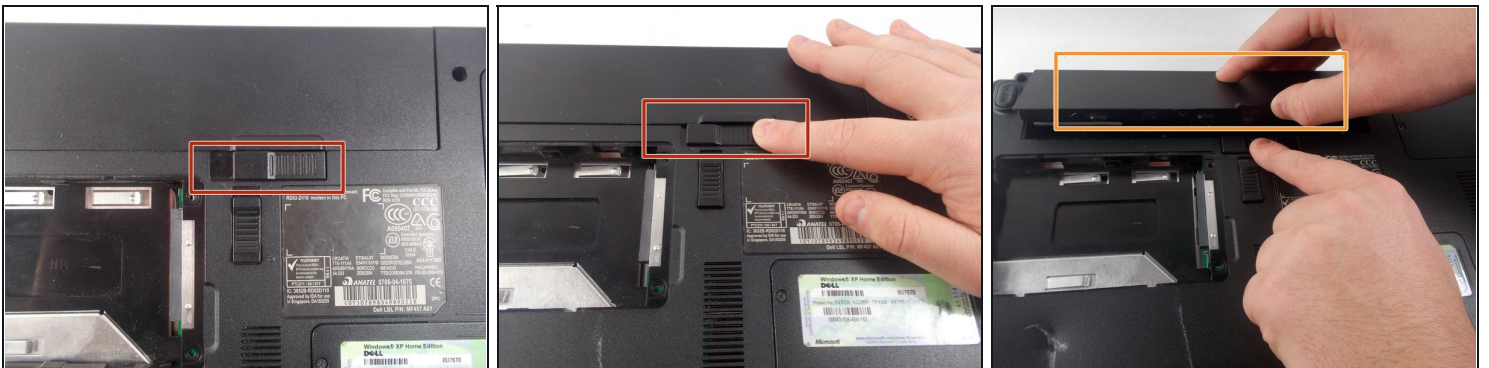
- Remove the battery by flipping the two switches under the battery and pulling it out

Step 2



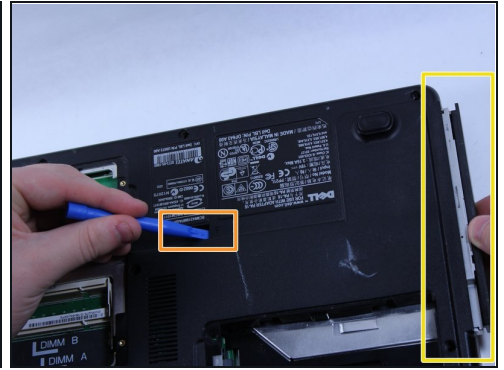
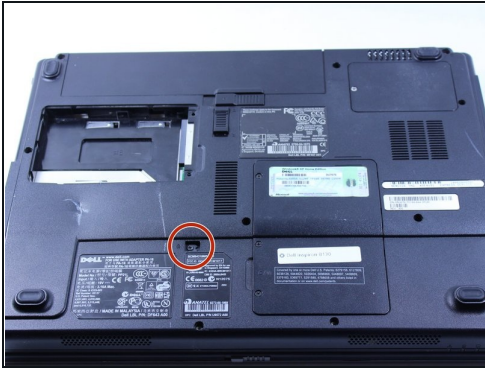
- Push the tab from the battery, downwards to unlock the battery.
- The tab should be in the position next to the unlocked indicator.

Step 3



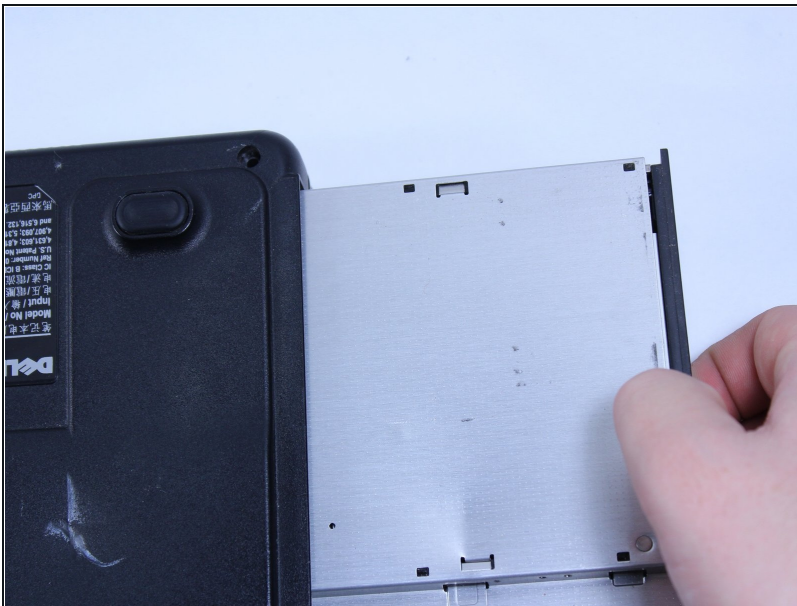
- Now, push the other tab (the one right under the battery) from right to left.
- Now the battery will be loose; lift the battery up and out of the computer.

Step 4 — Disk Drive



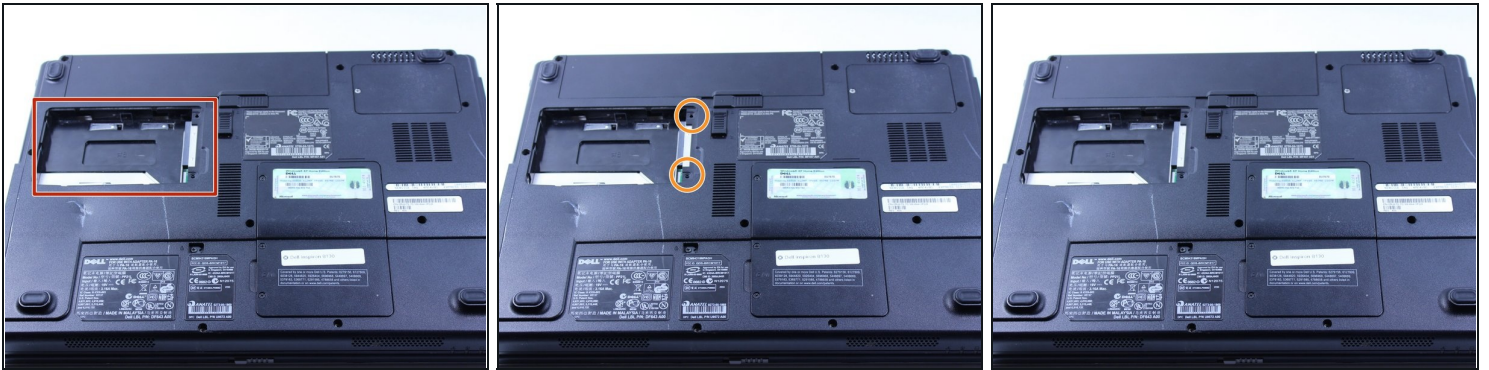
- Remove the 8mm screw
- Use the plastic opening tool to push out the disk drive.
- Pull the disk drive out with the opposite hand.

Step 5



- You can now remove the disk drive.

Step 6 — Hard Drive



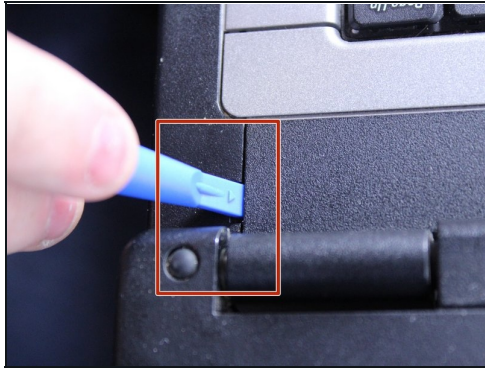
- This particular computer is missing its hard drive.
- Remove the two screws.
- Remove the plastic cover by lifting from the groove as indicated.
- Remove the hard drive from the computer by lifting up and out.

Step 7 — Keyboard



- Put down the computer and open up the screen.
- There is a long piece of plastic underneath the screen that you will have to remove.

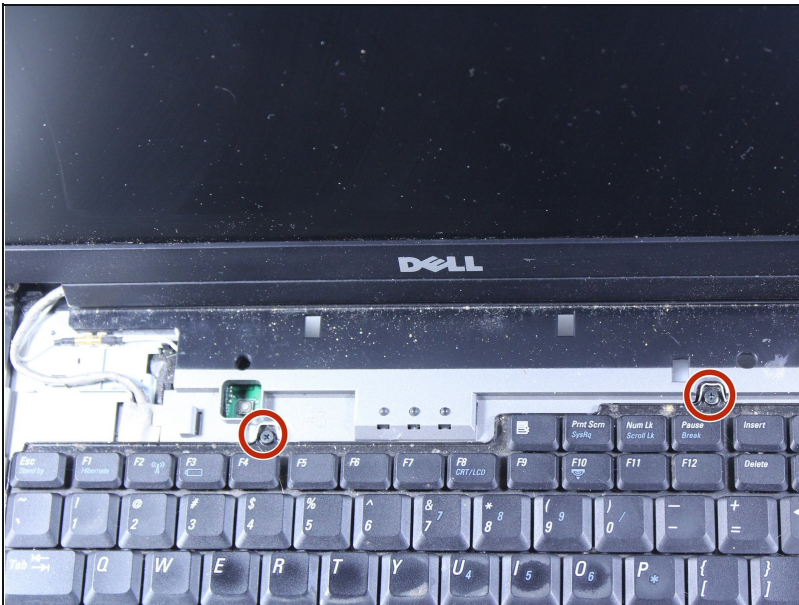
Step 8



⚠ When you pry the plastic plate off, be careful and pry gently so you do not crack the plastic.

- Insert the plastic opening tool into the little slot.
- Lift up gently and remove the plastic cover.

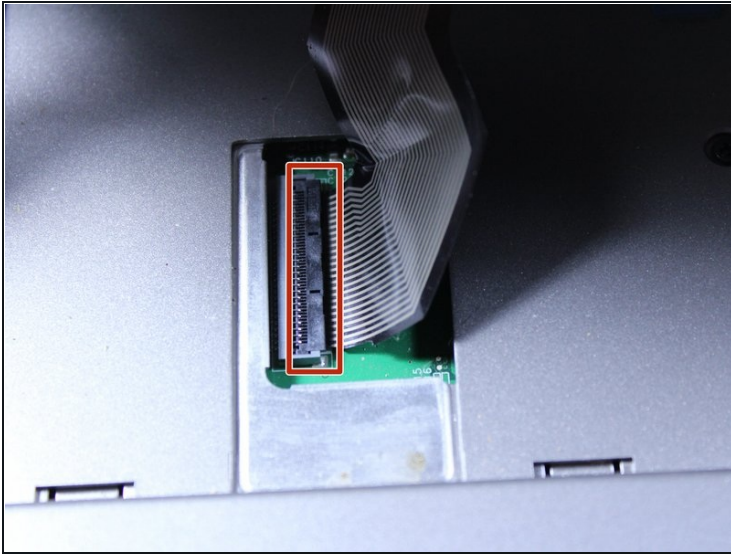
Step 9



- Remove the two 4mm screws at the top of the keyboard.

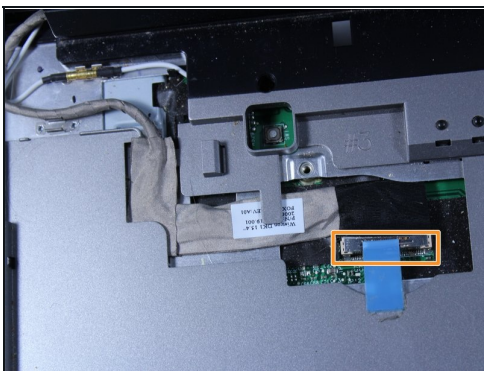
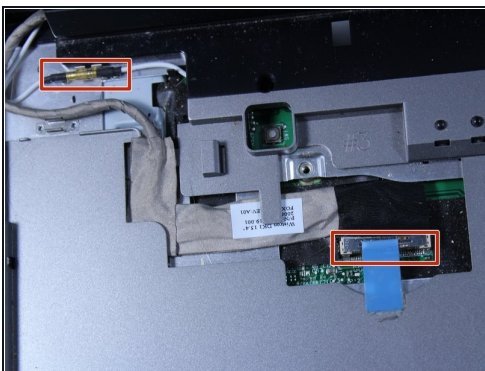
⚠ The keyboard is now loose but don't pull it out just yet. It is still connected underneath. Be gentle when lifting keyboard so you do not damage this connection.

Step 10



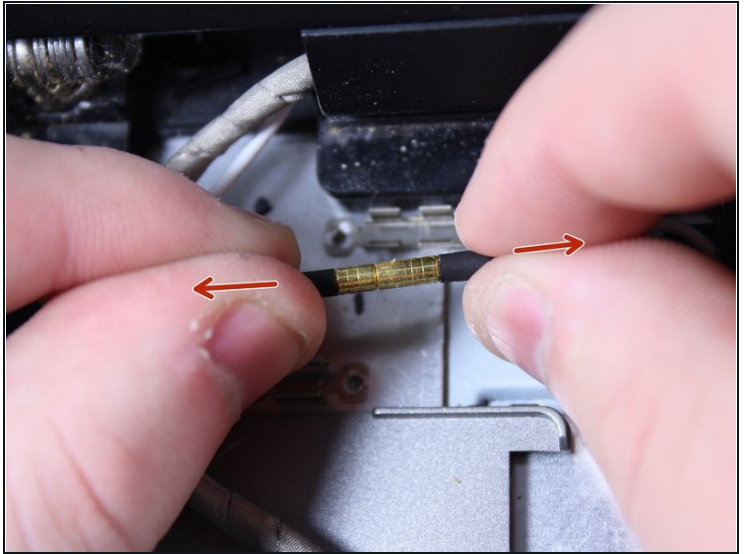
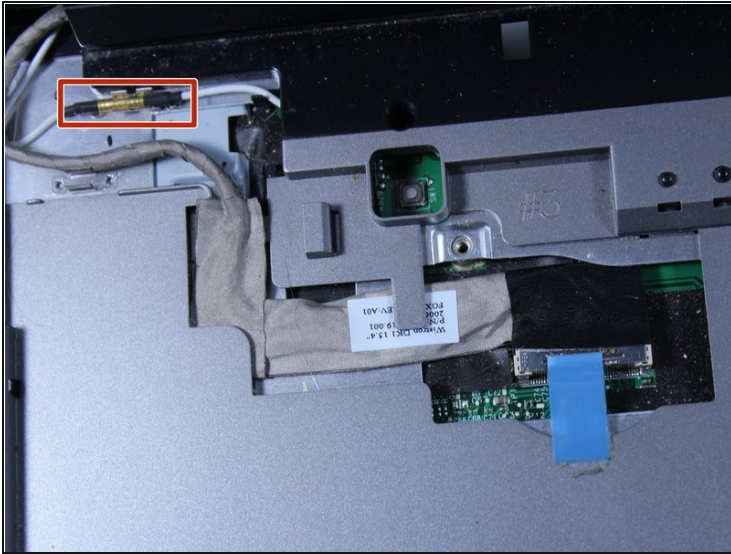
- Lift keyboard up slightly and you will see the keyboard connection.
- This black tab has to be lifted up to remove the keyboard.
- Put your finger underneath the tab and pull back gently as indicated.
- You can now remove the keyboard.

Step 11 — Screen



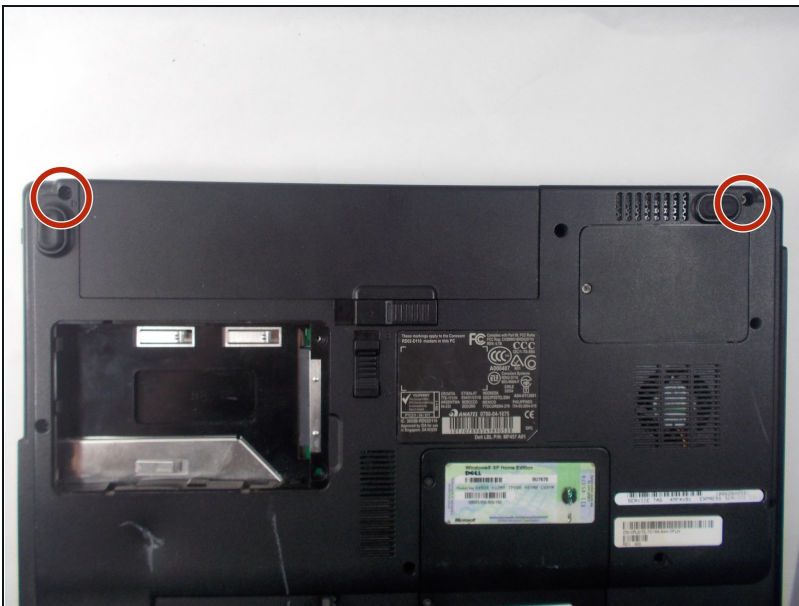
- This reveals two connections that must be removed.
- Remove the one with the blue tape by lifting up on the tape gently.

Step 12



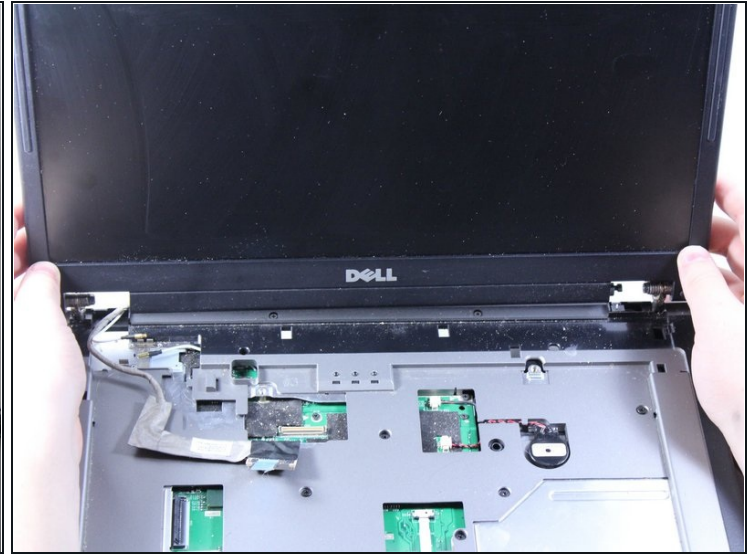
- Remove the other connection by pulling apart gently.

Step 13



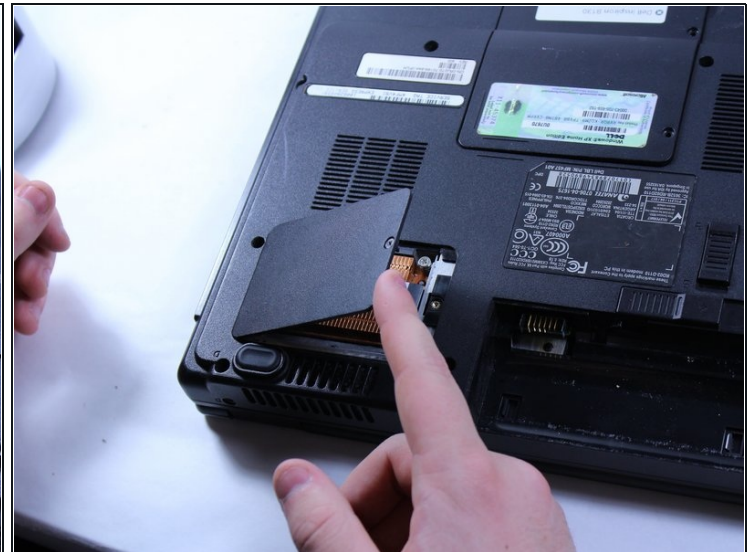
- Remove the two 6mm screws that are directly under the screen.

Step 14



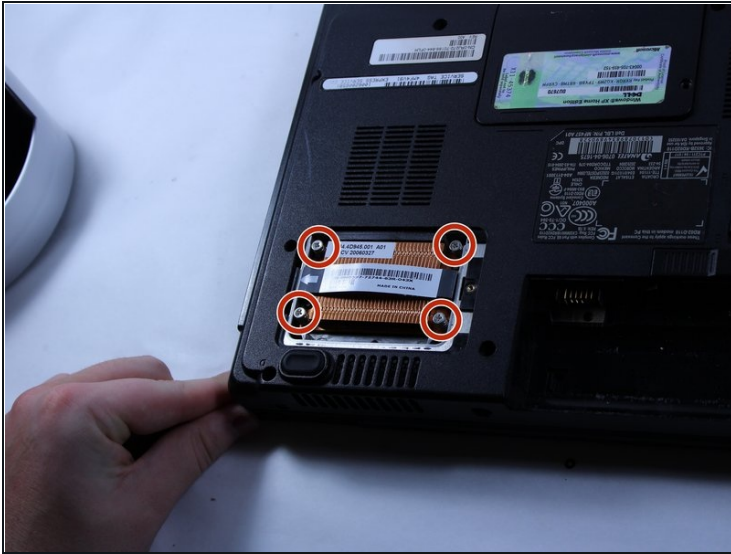
- Close the computer and flip it over so that the back is facing up.
- Remove the two 6mm screws that are behind each of the screens pivot points.
- Open up the screen and now it can be lifted up and off of the computer.

Step 15 — CPU



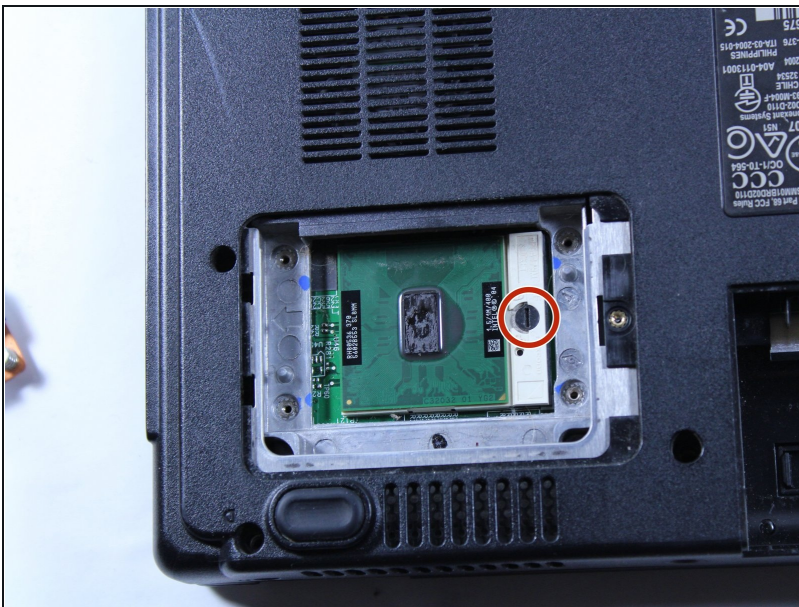
- Remove the 6 mm screw.
- Lift the plastic cover off.

Step 16



- Loosen the 4 screws.
- ① These screws stay connected to the heat sink.
- Remove the heat sink from the computer.

Step 17



- Use a flat head screwdriver to turn the screw one quarter turn into the unlock position.
- Remove the CPU.

Step 18 — RAM and Wireless



- Remove the three 6mm screws.
- Lift the plastic cover off to reveal the RAM and the Wireless.

Step 19



- To remove the RAM, push outward against the metal brackets.
- The first RAM will pop up so you can just pull it right out.
- Repeat the first step again to remove the second RAM chip.
- Installation is the reverse of removal.

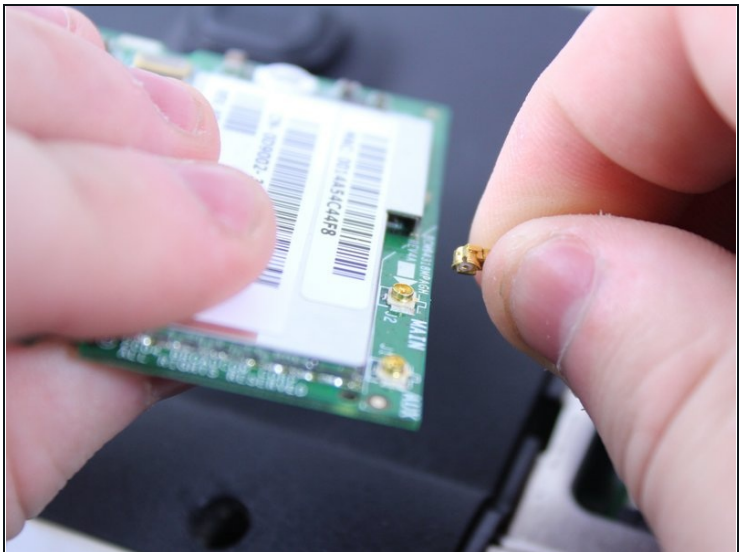
Step 20



- To remove the wireless chip, push outward on its two metal brackets.

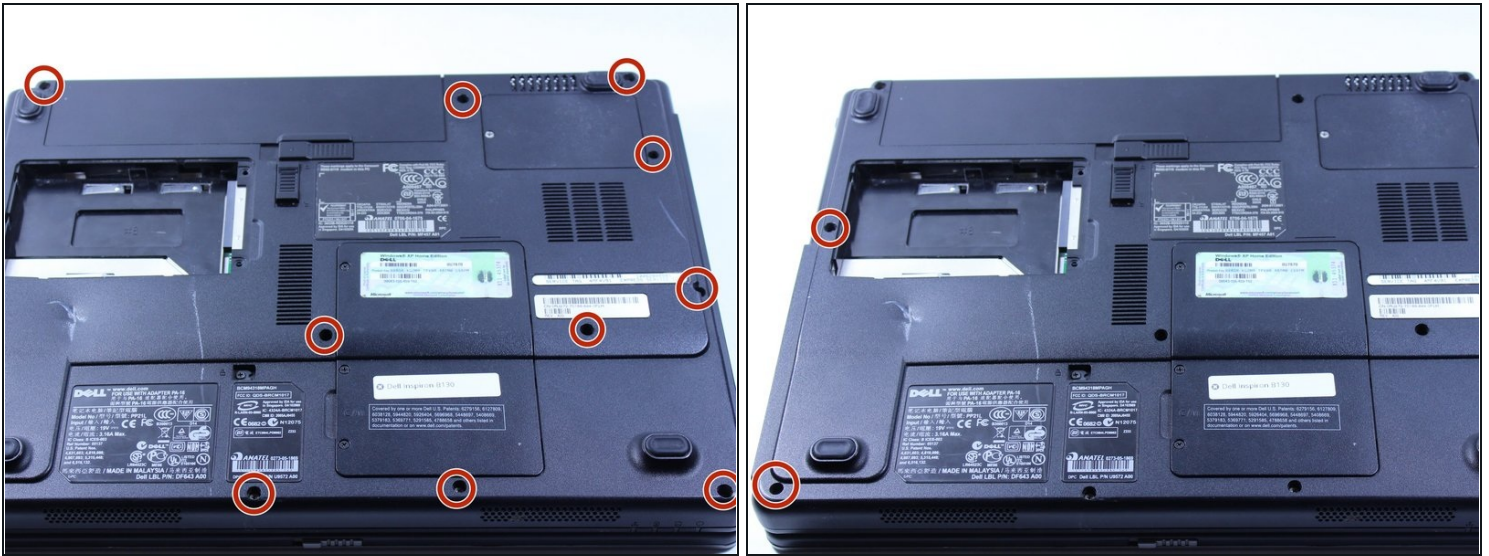
⚠ Do not remove the chip just yet, the wire that connects this chip must first be removed.

Step 21



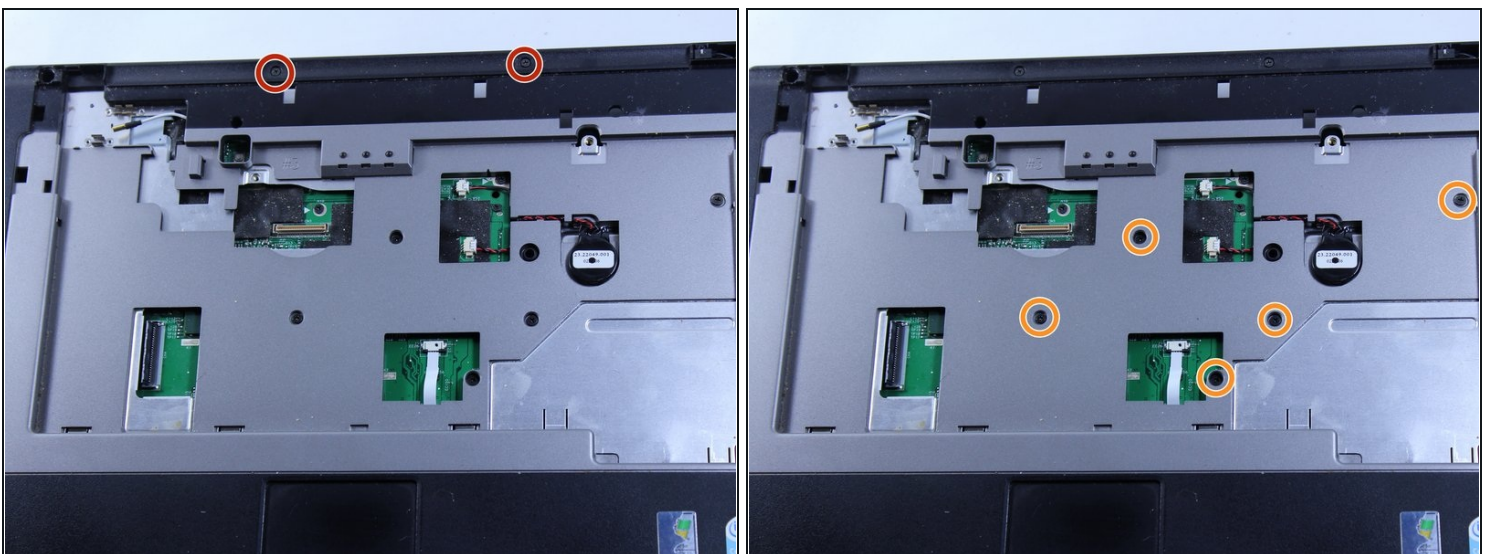
- To remove the wire, hold the wireless chip firmly and pull the connection straight up off of the chip.

Step 22 — Motherboard



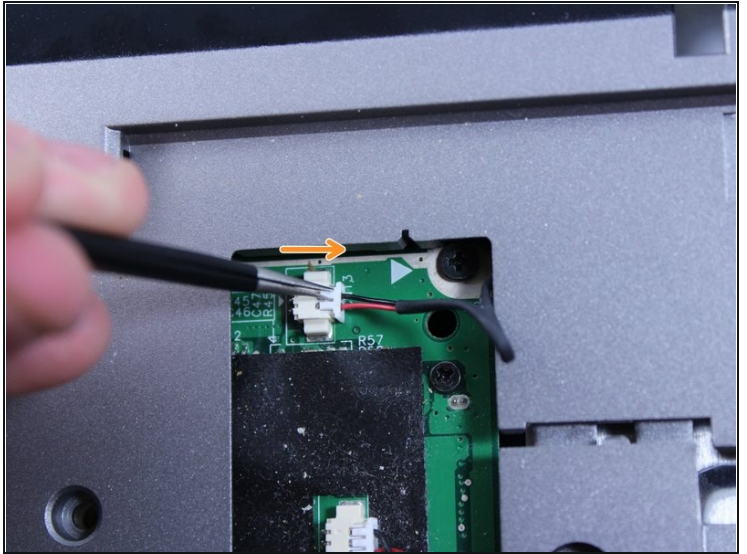
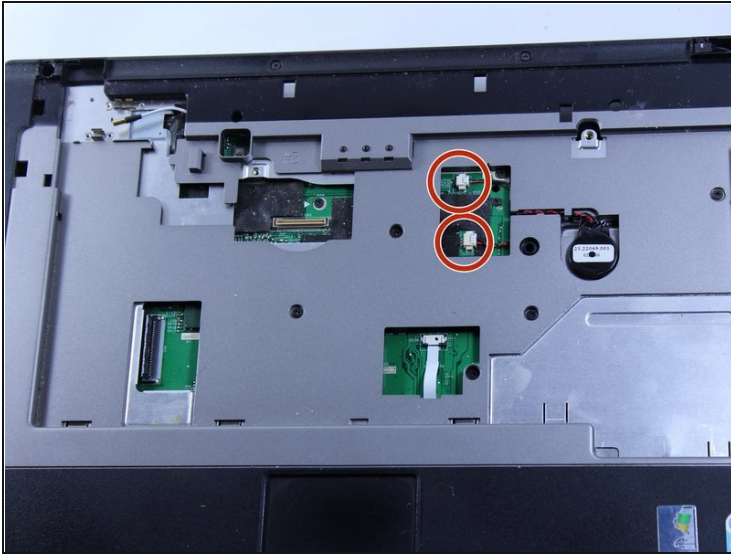
- Remove the twelve 8mm screws.
- ❗ The picture shows everything still installed in the computer. At this point, the CPU, RAM, battery, hard drive and wireless chip should all be removed.

Step 23



- Turn the computer over and remove the two 4 mm screws that are located just below where the screen should be.
- Remove the five 6mm screws that remain.

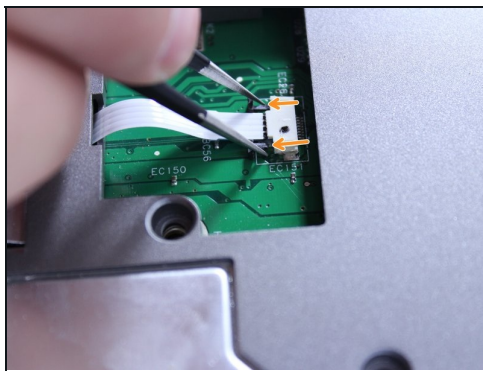
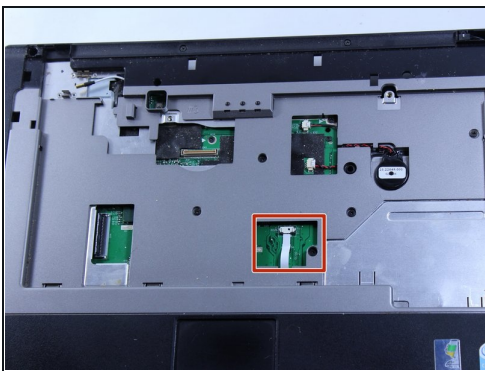
Step 24



- Disconnect these two connections.

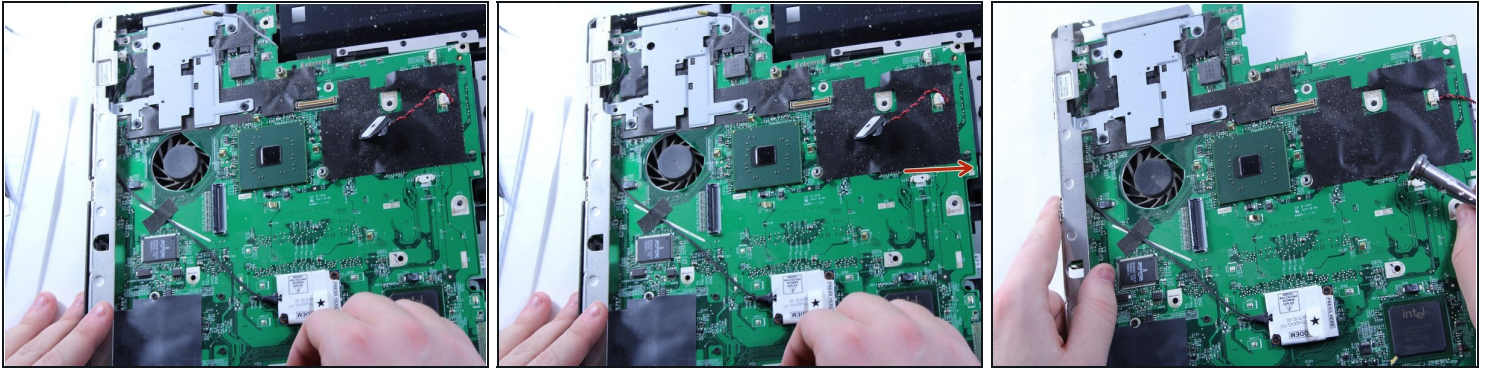
⚠ Do not pull by the wires! This can damage the connection. Use [tweezers](#) to grab by the white plastic piece and push outward.

Step 25



- This connection must also be removed.
- Use tweezers to grab the small black connector and pull it straight back.
- You can now disconnect this wire.

Step 26



- The whole cover/frame can be pulled off of the top of the motherboard.
- The motherboard can now be removed by pulling up and sliding out to the right.

To reassemble your device, follow these instructions in reverse order.