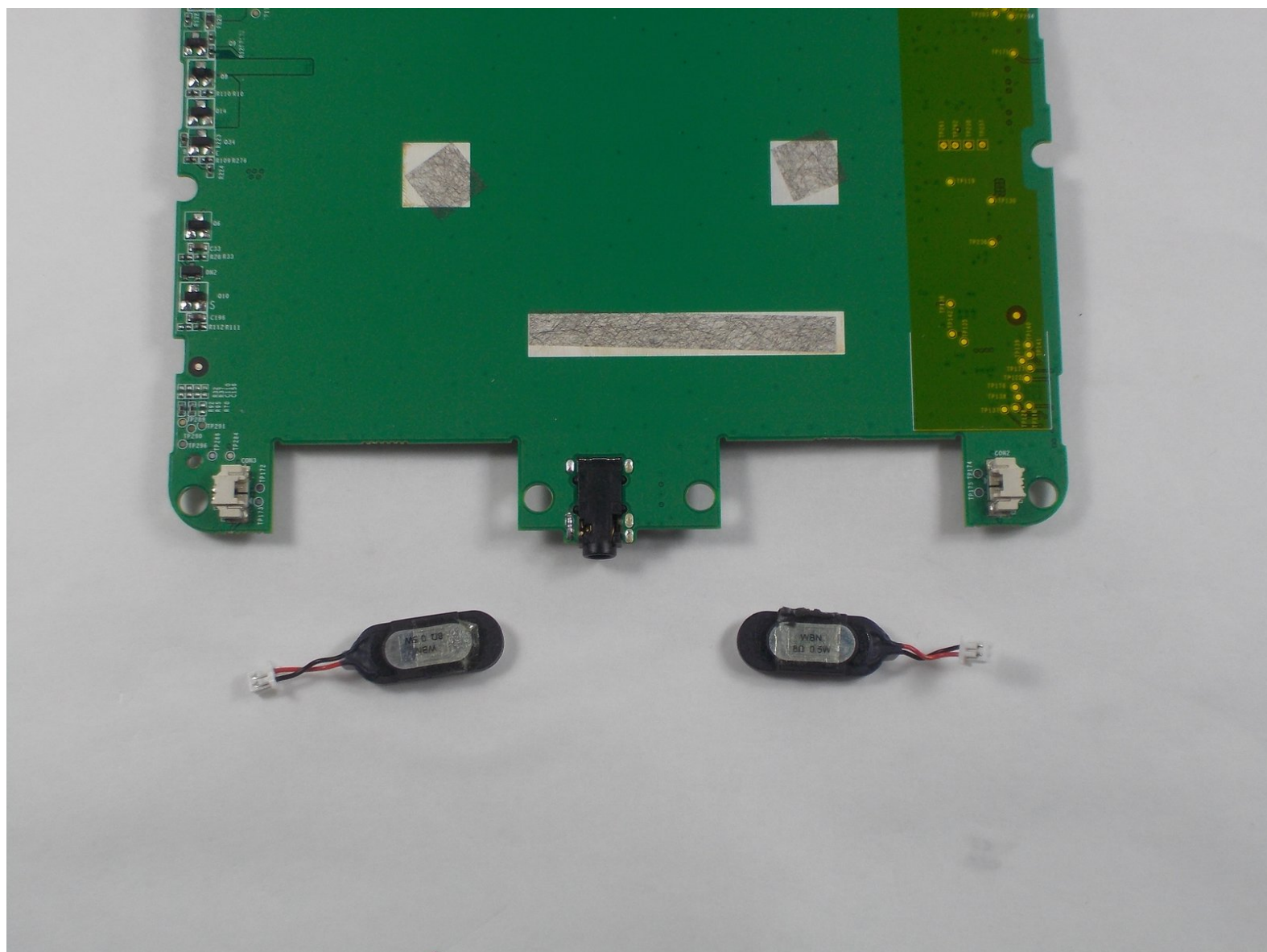




# Pandigital Novel PRD07T10WWH7 Speaker Replacement

In this guide, you will replace the speakers in the Pandigital Novel PRD07T10WWH7.

Written By: Samuel Carey



---

## INTRODUCTION

If you are experiencing poor audio quality, then you should consider replacing the speakers. Also, if the sound is quiet you should try to replace the speakers because it could be that one of the speakers is faulty.

---

### TOOLS:

- [iFixit Opening Tools](#) (1)
  - [JIS Driver Set](#) (1)
  - [Metal Spudger Set](#) (1)
-

## Step 1 — Speaker



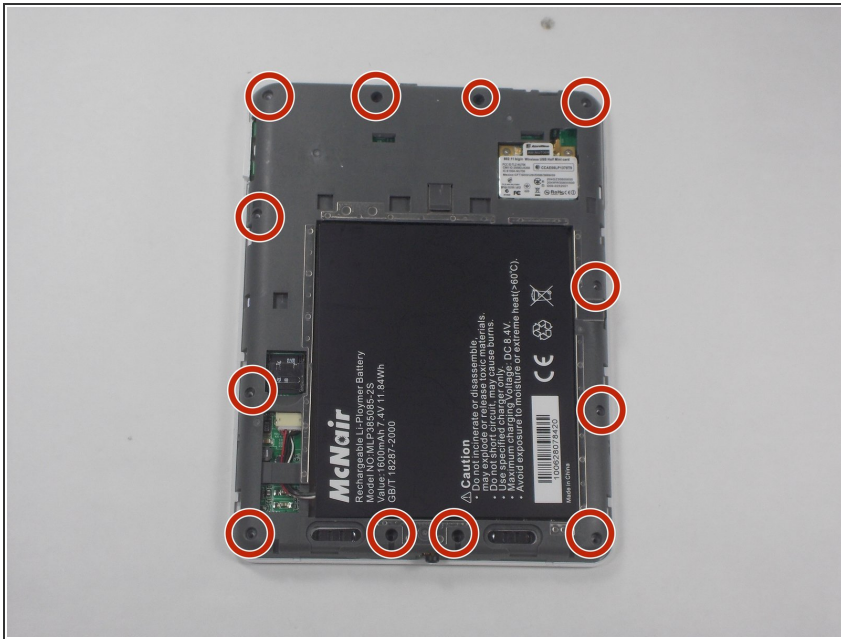
- Remove the back panel by sliding it downwards and pushing in slightly.

## Step 2



- Pry off the second white panel, removing two clips underneath.
- Start from the middle, and then work on the sides. The sides may be difficult to remove, so try to focus on one side and work your way around.

## Step 3



- Using a Phillips #0 bit, remove the 12 4mm screws on the outer area of the gray area exposed by removing the back panels.

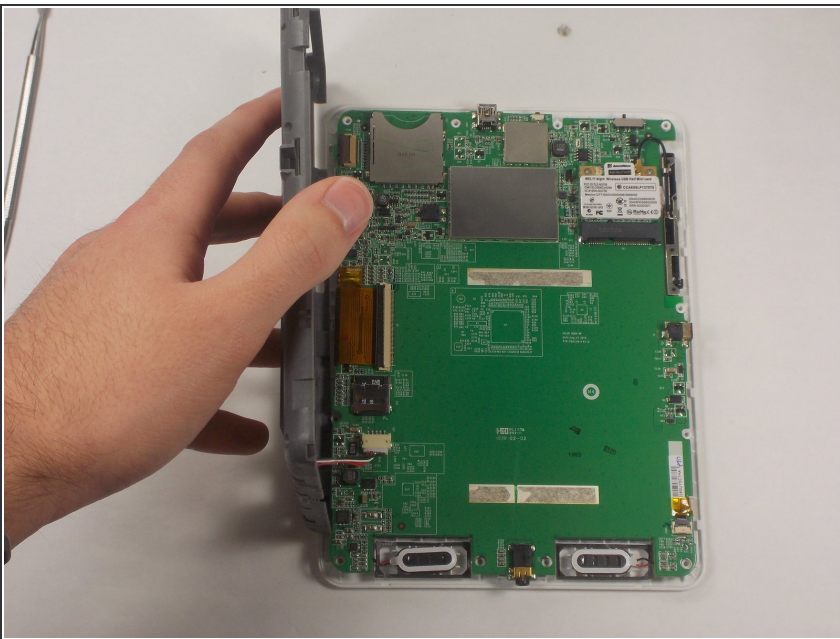


## Step 4



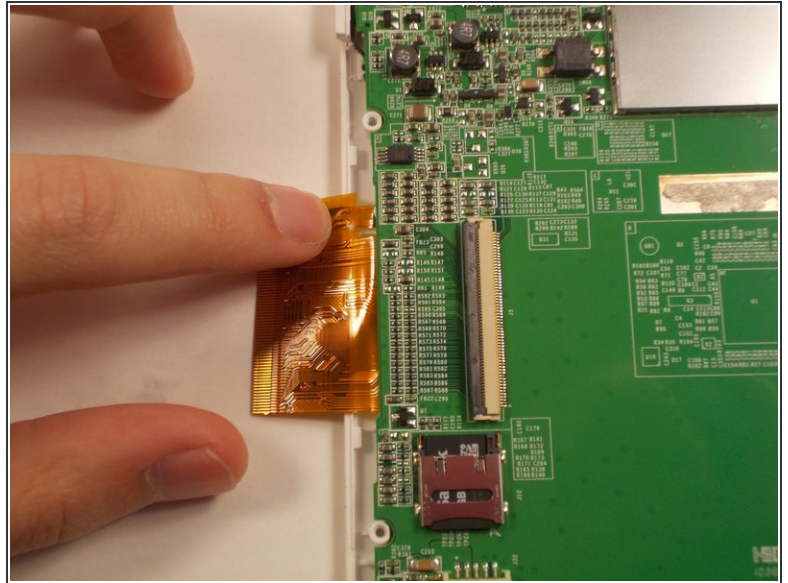
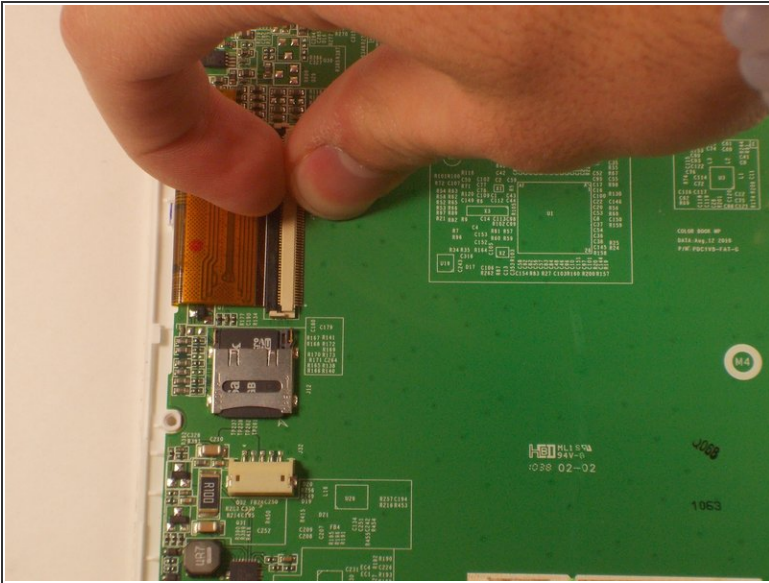
- Carefully pry the back of the device from the front panel and motherboard. There are a series of clips holding them together that need to be separated.

## Step 5



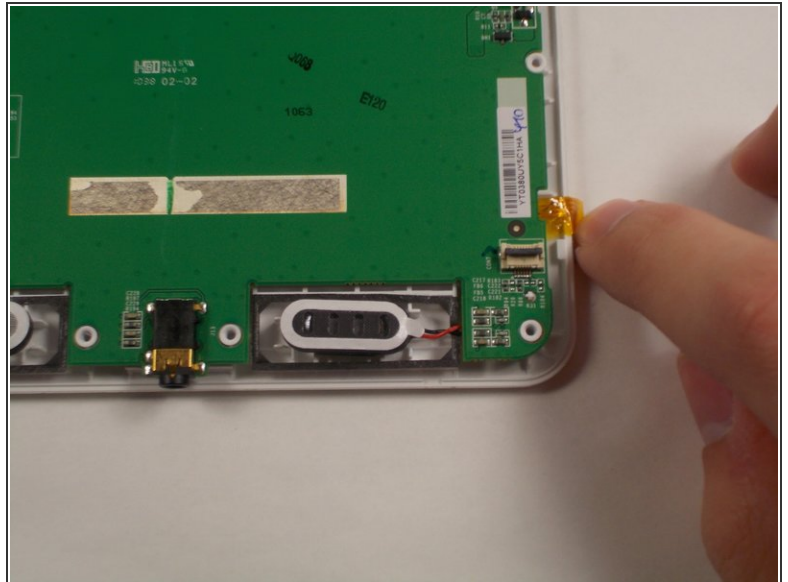
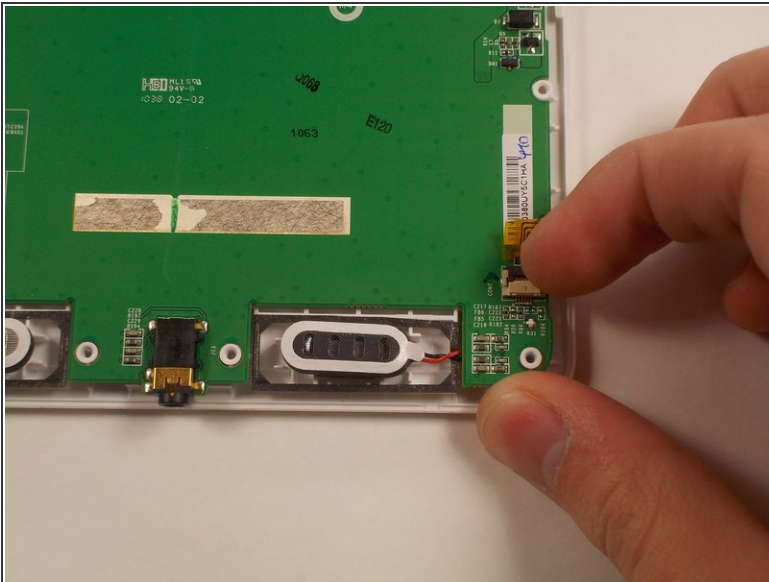
- Now, lift up the gray piece, unplug the battery connector, so the gray piece will come free from the rest of the device.

## Step 6



- Use the tip of your plastic spudger or your fingernail to flip up the long retaining flap. The longer, gold ribbon cable can now be pulled out safely.

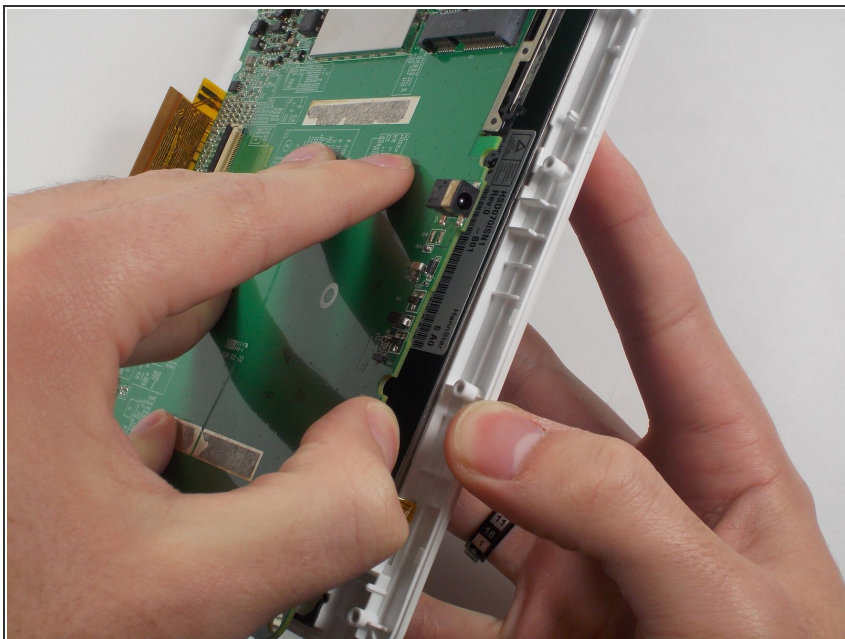
## Step 7



- Use the tip of your plastic spudger or your fingernail to flip up the shorter retaining flap. The smaller gold ribbon cable can now be pulled out safely.

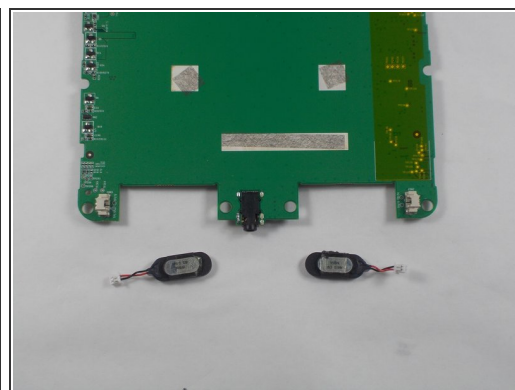
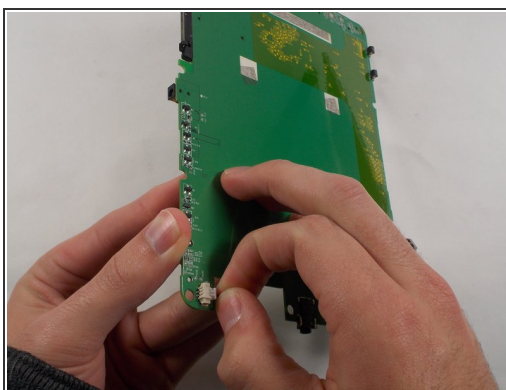
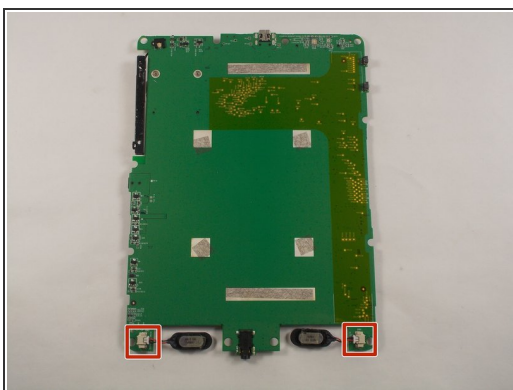


## Step 8



- Starting from the side of the device, lift the motherboard off of the plastic standoffs.
- You will need to peel both speakers off of the device's plastic frame.

## Step 9



- Unplug the speakers from the connectors on the motherboard.

To reassemble your device, follow these instructions in reverse order.