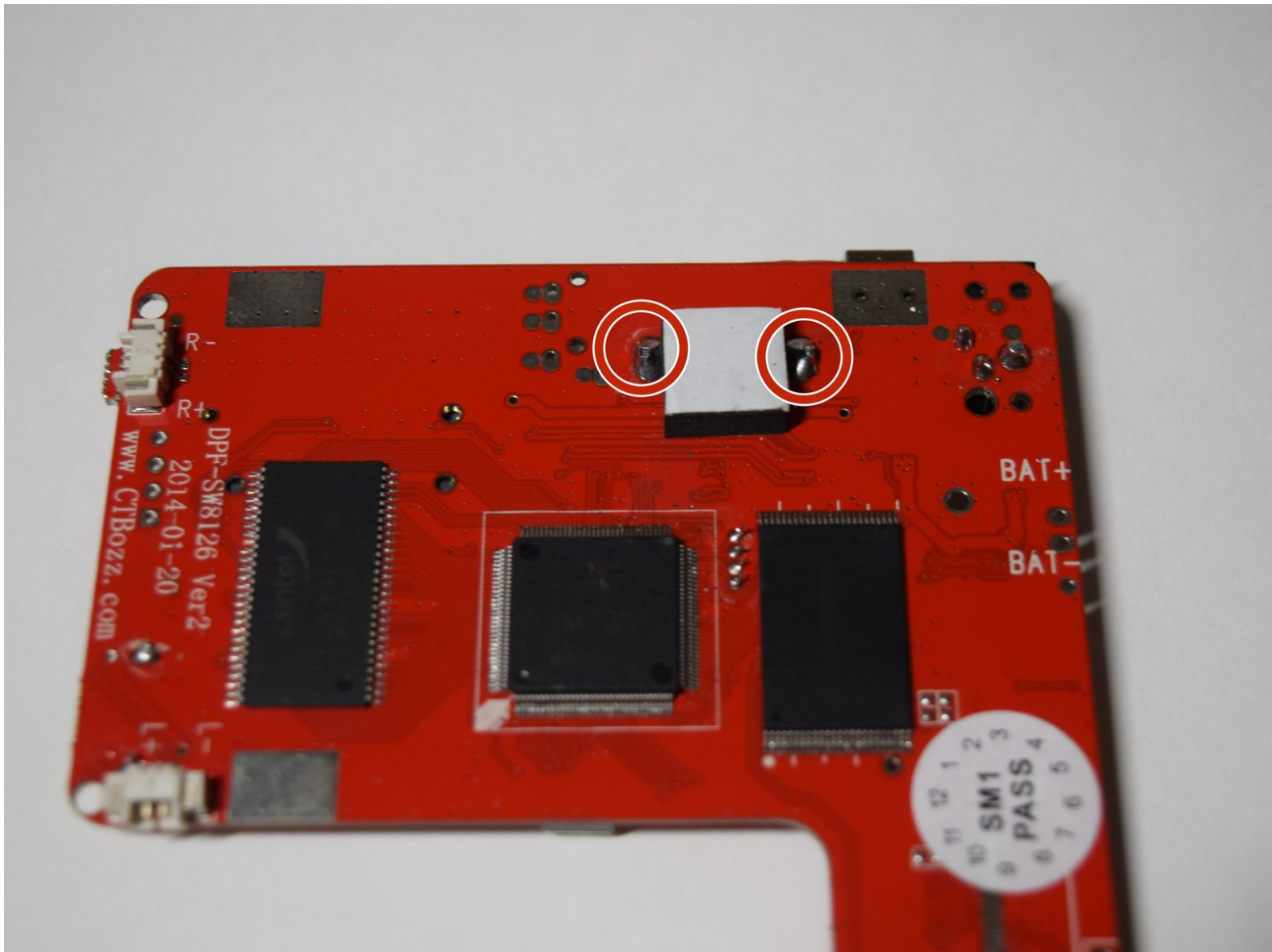




Aluratek ADMPF310F Replacing USB Port Replacement

This guide will show you how to replace the USB port on the motherboard.(some soldering required)

Written By: Pascal Alexis



INTRODUCTION

One of the most important features on the device is the fact they can upload pictures using the usb port. If yours isn't working that a problem and this guide is here to help. This guide also requires soldering for more on how to solder check the link [here](#).



TOOLS:

- [Spudger](#) (1)
 - [Phillips #00 Screwdriver](#) (1)
 - [iFixit Opening Tools](#) (1)
-

Step 1 — Motherboard



- Using the black nylon spudger, pry off the clips all around the frame. You will hear a popping sound for every clip

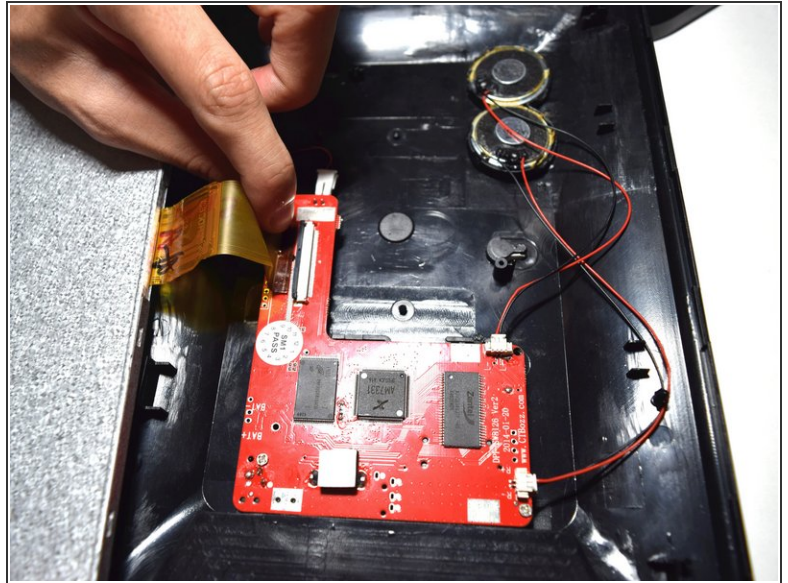
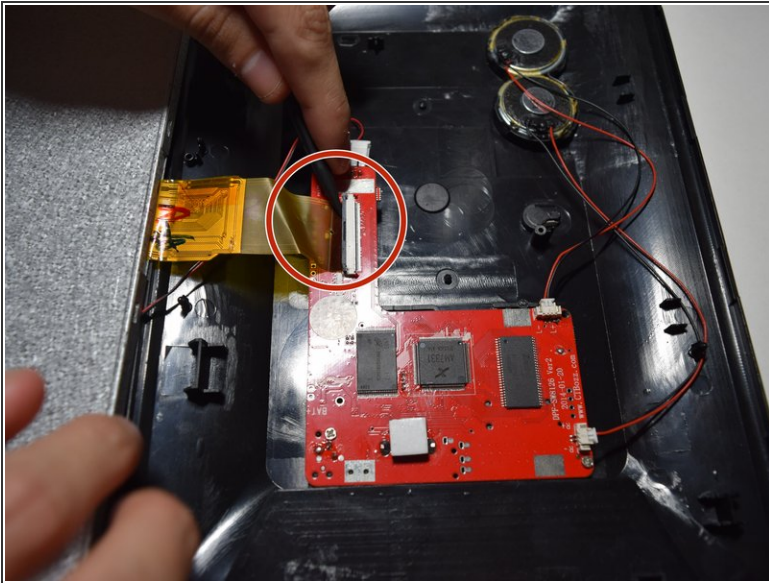
 Be sure not to pry too hard because you could crack or break the plastic facing of the device.

Step 2



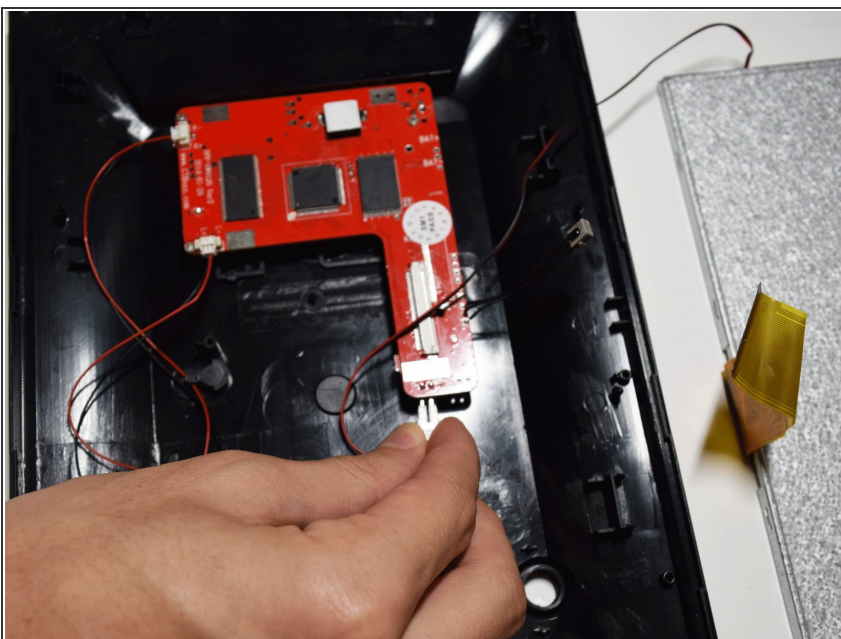
- Lift screen out of place so you can access the plugs that connect it.

Step 3



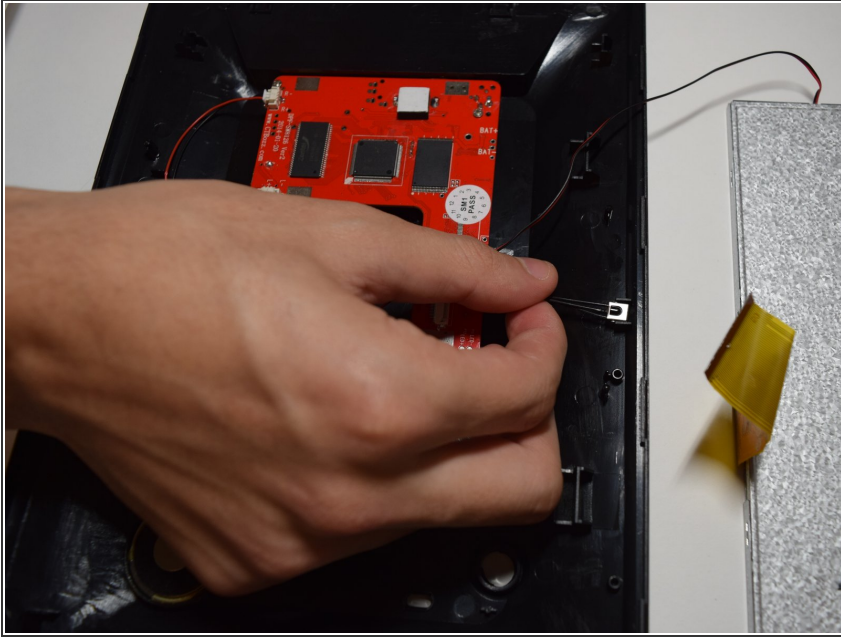
- Using the plastic spudger tool lift the plastic zif(zero instertion force) connector clip up.
 - Pull the ribbon cable away from the mother board.
- ⚠ Be careful as this zif connector is very frail plastic.

Step 4



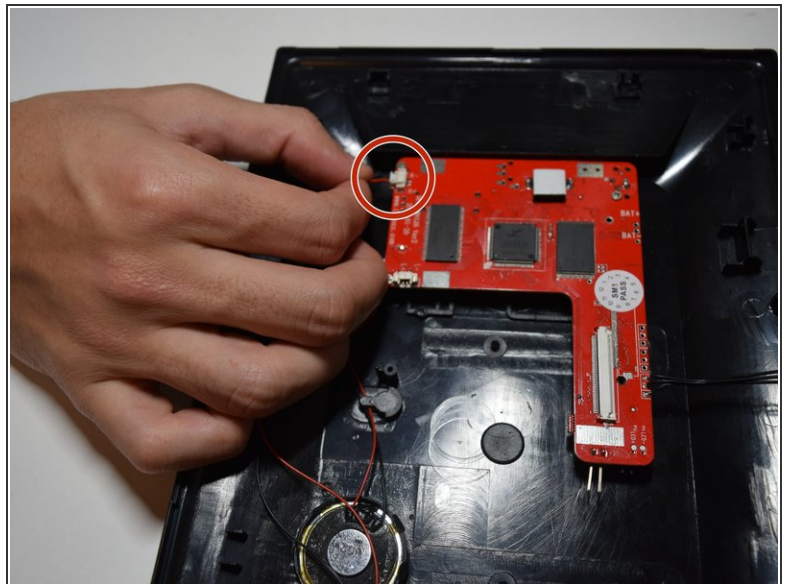
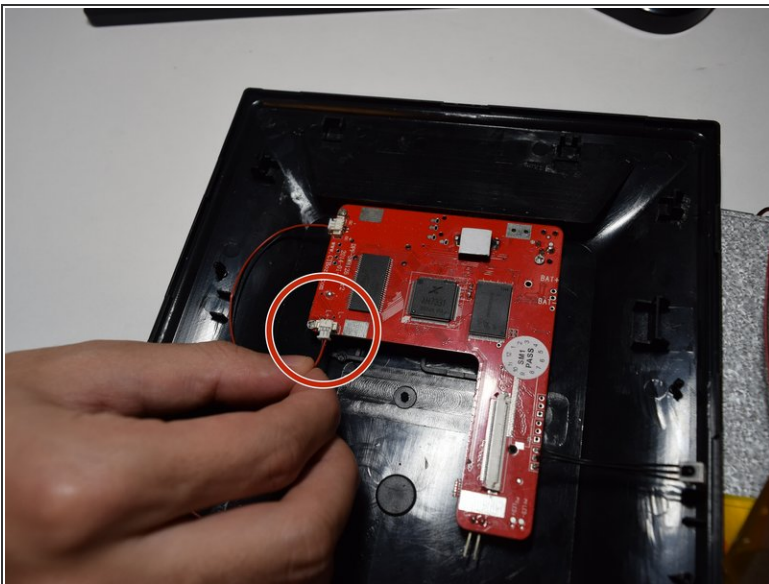
- Disconnect the red and black cable connecting the screen to the motherboard by just pulling it out.

Step 5



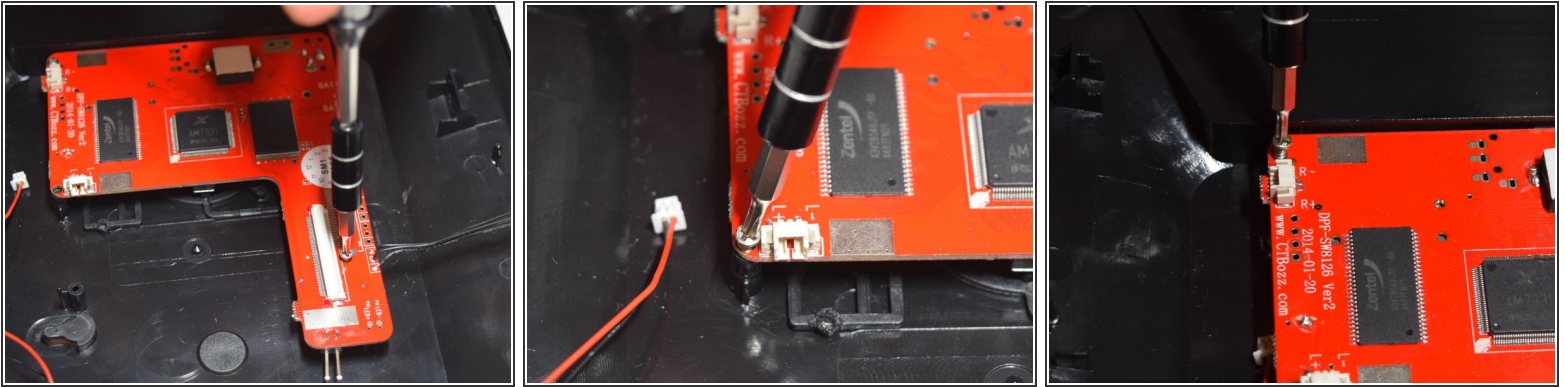
- Pull out remote receiver out of its clip.
- ⚠ Be careful to not move the wires around for the remote receiver too much, as they are soldered to the motherboard.

Step 6



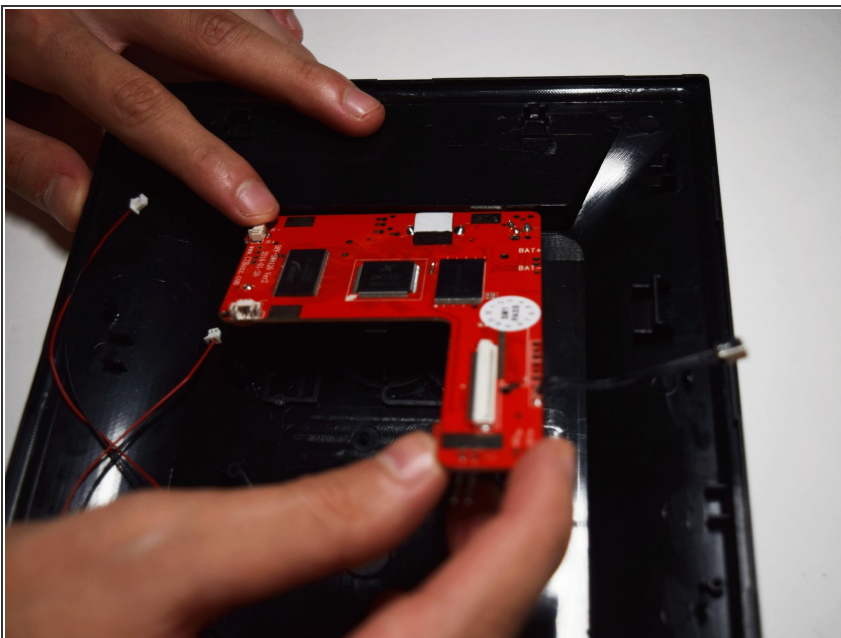
- Using fingers pull the first speaker wire that is located closest to the speakers
- Again using your fingers, pull out the second speaker wire near the far side of the motherboard.

Step 7



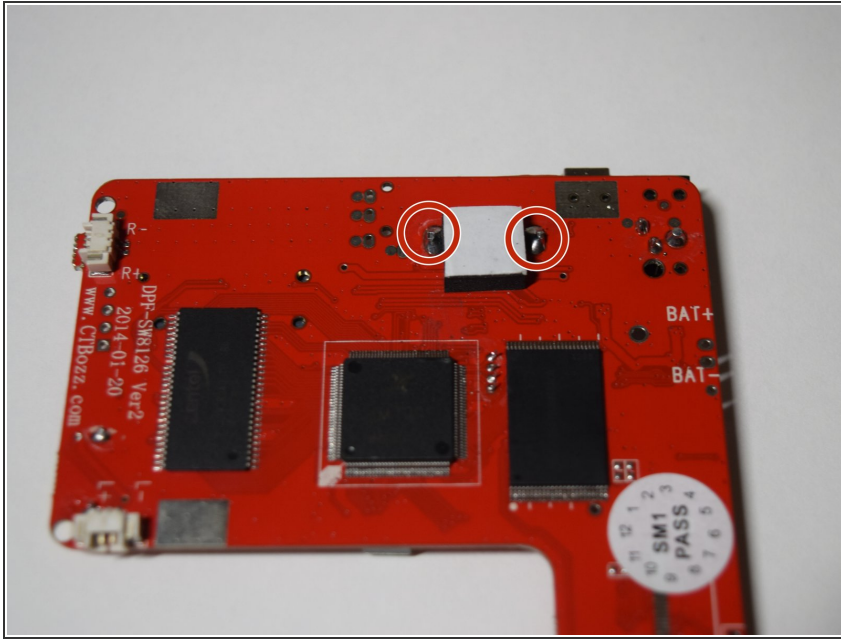
- Using the ph00 phillips head screwdriver unscrew the four 4mm screws circled in the picture.

Step 8



- Pull up the smaller end of the motherboard.
- Apply force pulling away from the USB ports to get the mother board out of place.

Step 9 — USB Port



- On the back end of the mother board unsolder the USB port at the two points shown.

To reassemble your device, follow these instructions in reverse order.