



Toshiba Satellite R15-S829 Disk Drive Replacement

This guide will show you how to replace the disk drive.

Written By: Justin Slater



INTRODUCTION

This guide will show you how to replace the disk drive. You may need to replace the disk drive if you can't read any CDs or DVDs.



TOOLS:

- [64 Bit Driver Kit](#) (1)
-

Step 1 — Battery Replacement



⚠ Unplug the charging cable from the laptop.

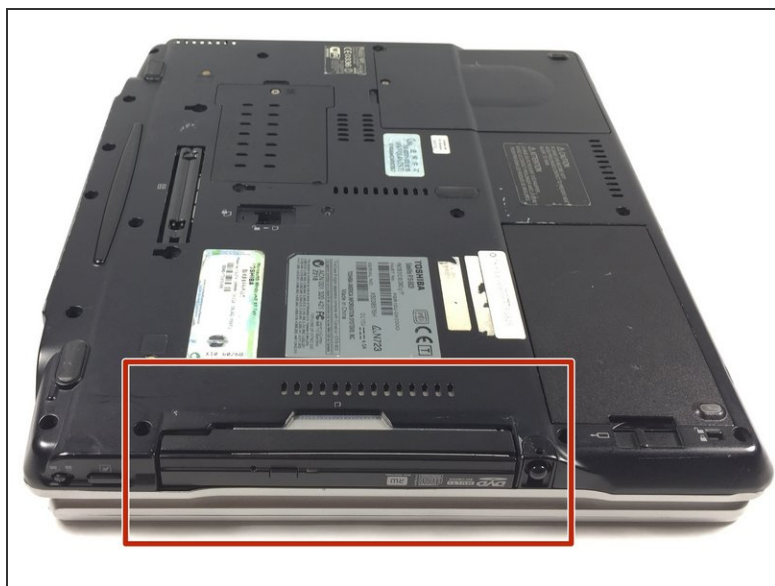
- Turn off the laptop.
- Turn the laptop over and locate the battery.

Step 2



- Push the small switch near the corner of the laptop to the unlocked position.
- Push the bigger switch in the direction of the icon and pull the battery away from the laptop.

Step 3 — Disk Drive Replacement



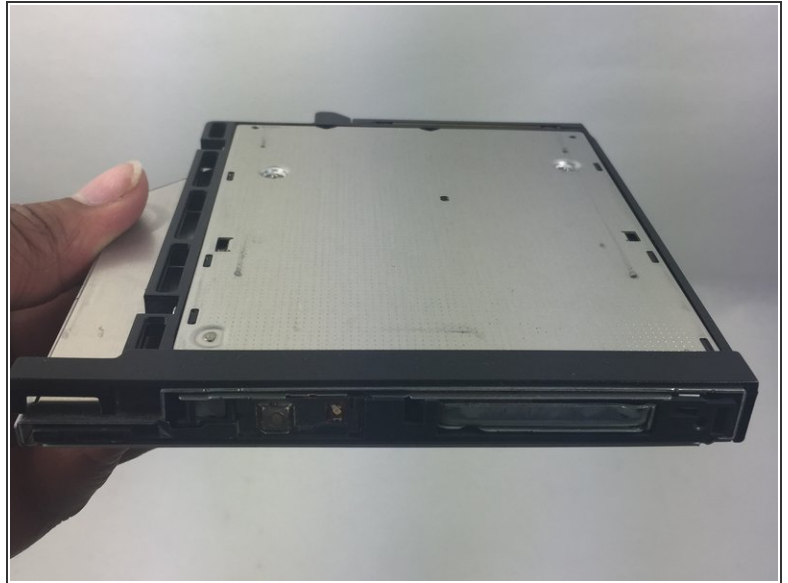
- Locate the disk drive on the side of the laptop.

Step 4



- Locate the indent on disk drive on the backside of the computer.

Step 5



- Use your hand to remove the disk drive by pulling outward.

Step 6



- Push the end of a paperclip into the small hole on the disk drive to open it if there is a disk that is stuck in the drive.

To reassemble your device, follow these instructions in reverse order.