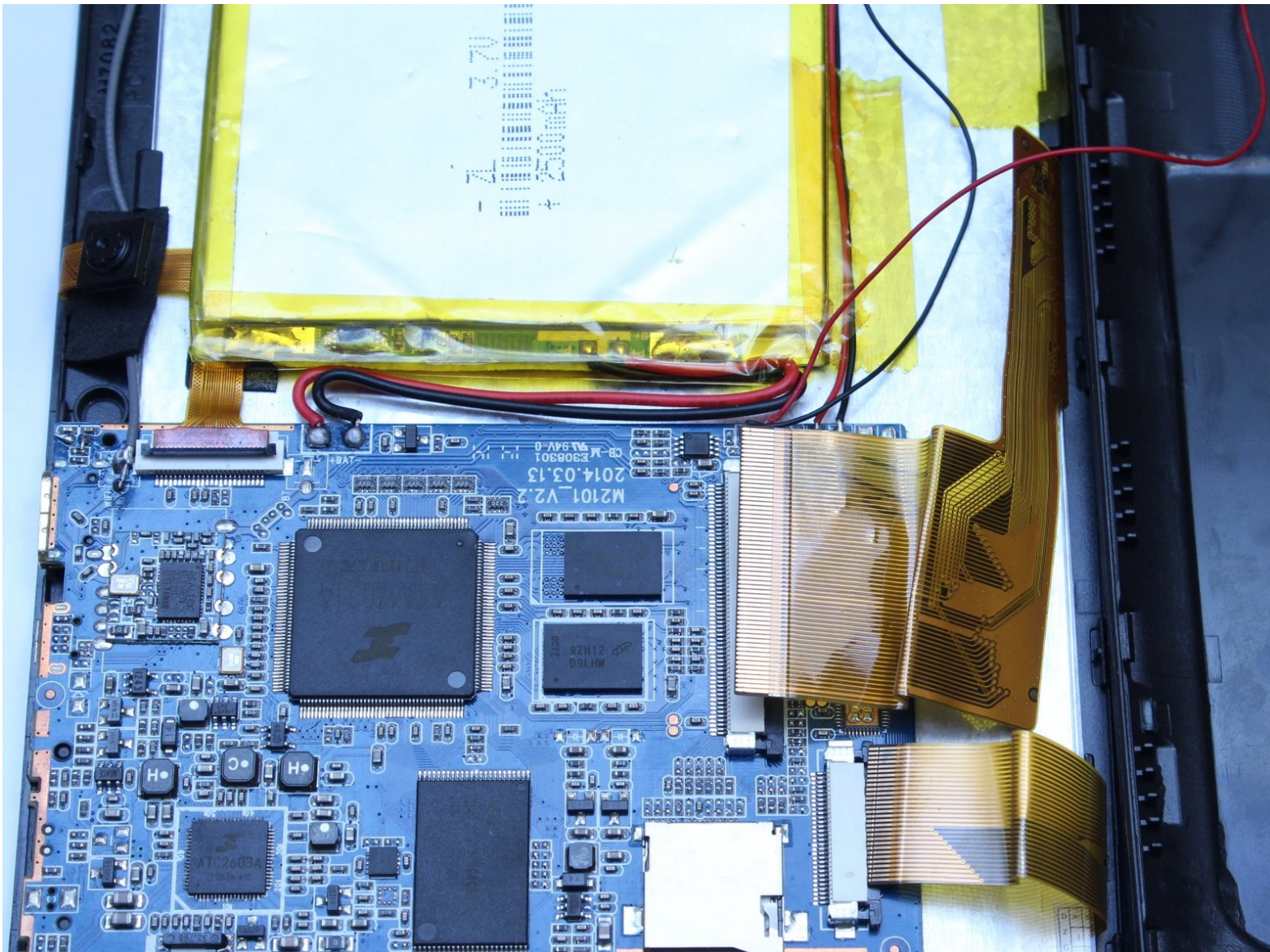




# ProntoTec Axis Motherboard Replacement

This guide will demonstrate how to replace the motherboard on the ProntoTec Axis

Written By: Estelle Hatem



## INTRODUCTION

All electrical components of the ProntoTec Axius tablet are connected to the motherboard. Water damage, dropping, and any other physical damage can cause the motherboard to short or malfunction; rendering the device unusable. This guide will highlight how to disconnect the motherboard from the other components of the device for replacement.

---

### TOOLS:

- [Phillips #00 Screwdriver](#) (1)
  - [iFixit Opening Tools](#) (1)
  - [Solder](#) (1)
  - [Soldering Iron](#) (1)
-

## Step 1 — Motherboard



- ⚠ Make sure the device is completely turned off before you begin taking it apart to avoid electrocution risks.
- Place the tablet face-up on a flat table.

## Step 2



- Starting near the headphone port, fit the flat end of the spudger in between the screen and back case.
- Pry the back case from the screen around each point on the device to release the clips securing the case halves to each other.



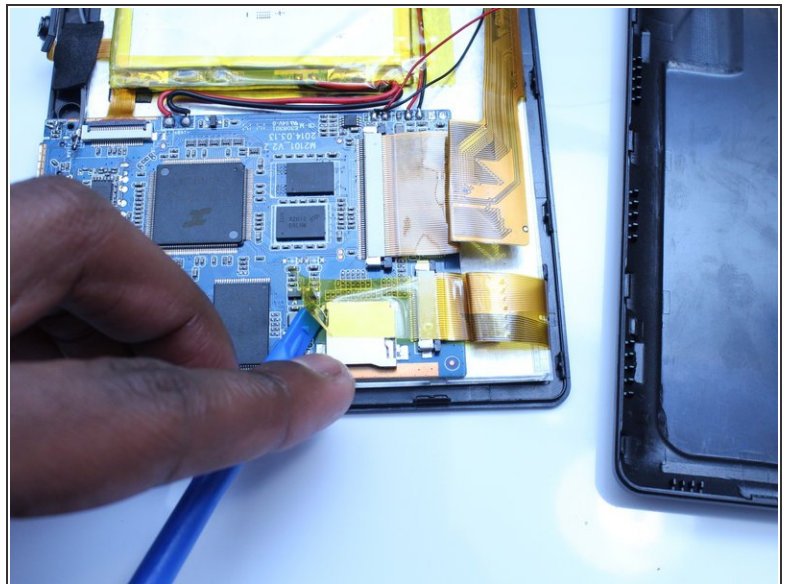
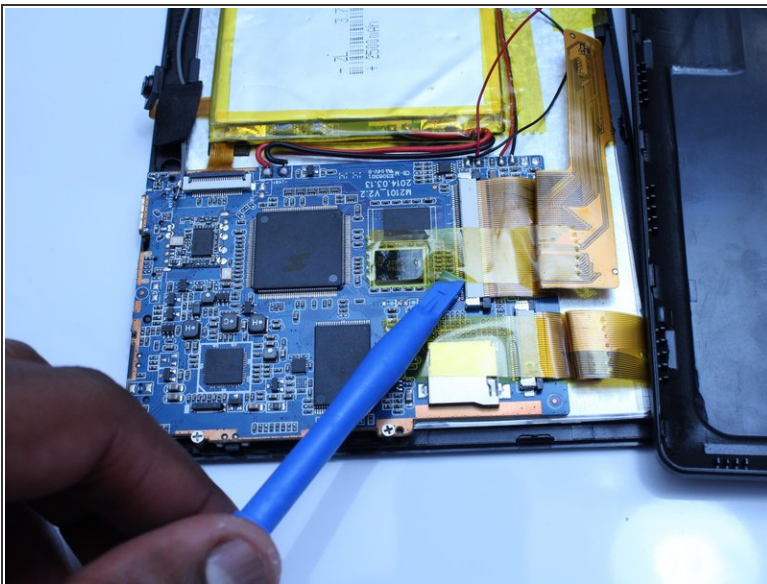
## Step 3



- Gently remove the back case of the device and lay it in a flat surface as shown in the photo.

⚠ Make sure not to sever the wires (red and black) connected to the speaker that is located in the back case.

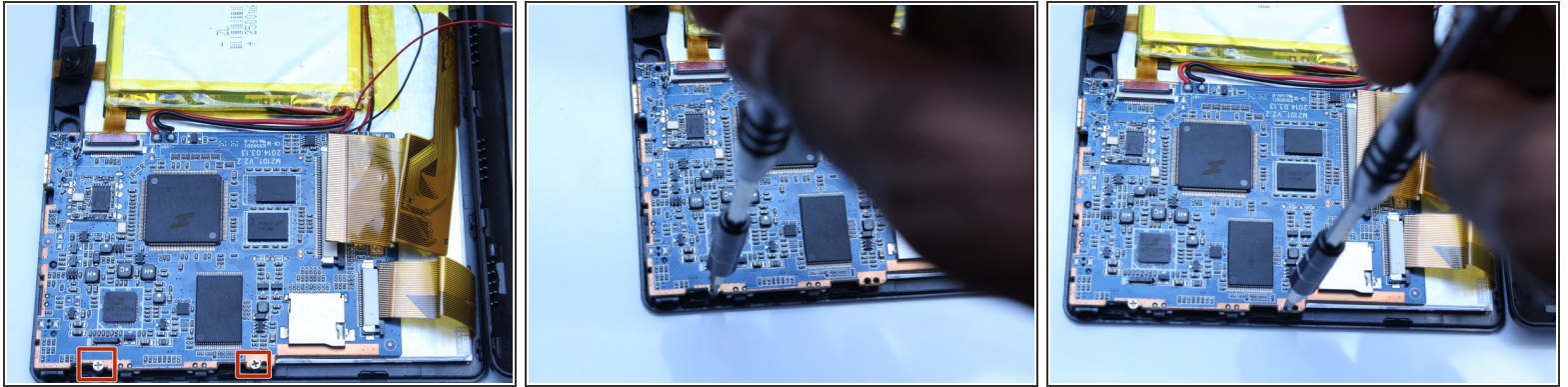
## Step 4



- Remove only the yellow tape that touches the motherboard

⚠ Be careful not to cut or damage the wires (red and black) that connect the battery to the motherboard.

## Step 5

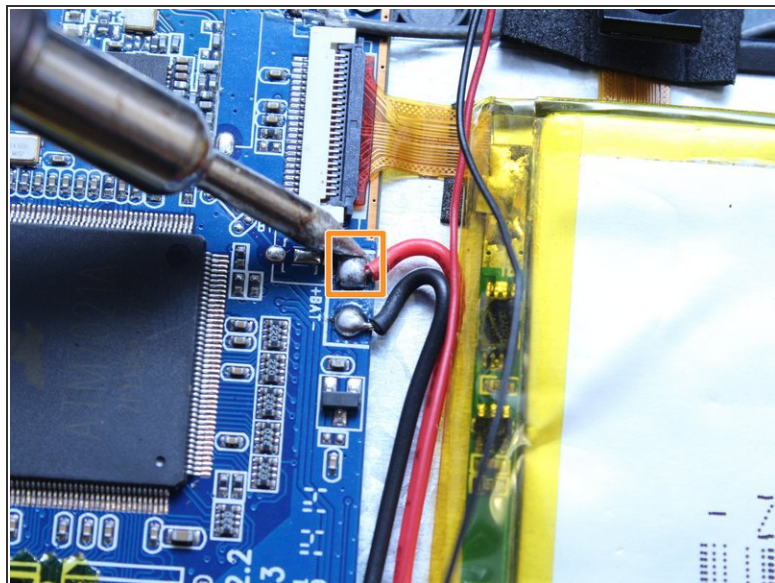
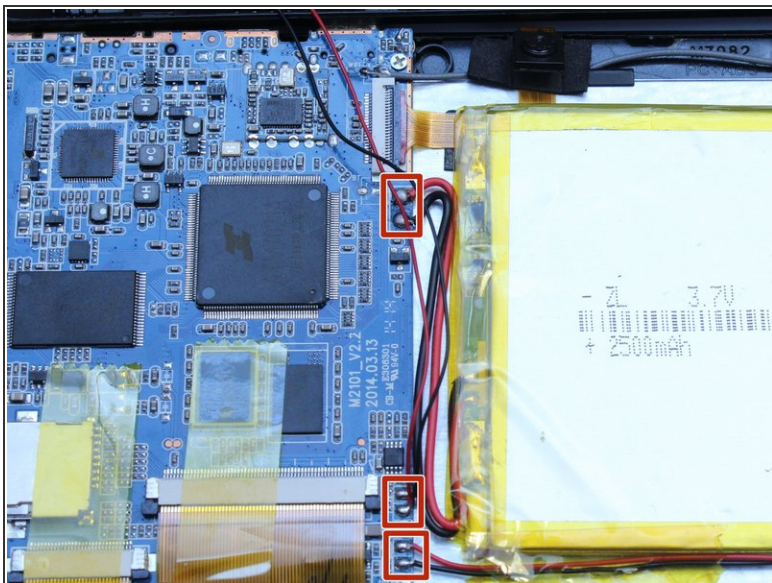


- Use a Phillips screwdriver (PH00) to unscrew the two screws that connects the motherboard to the device

⚠ Be careful not to cut or damage the wires (red and black) that connect the motherboard to the battery.

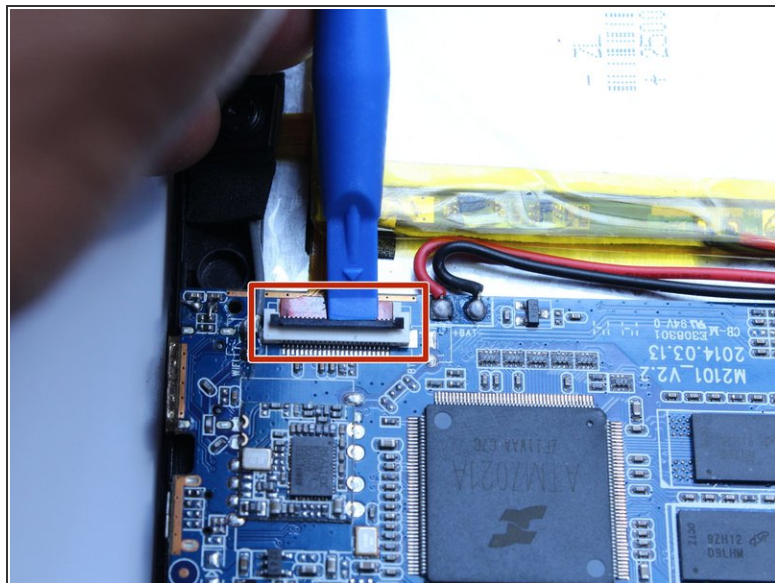
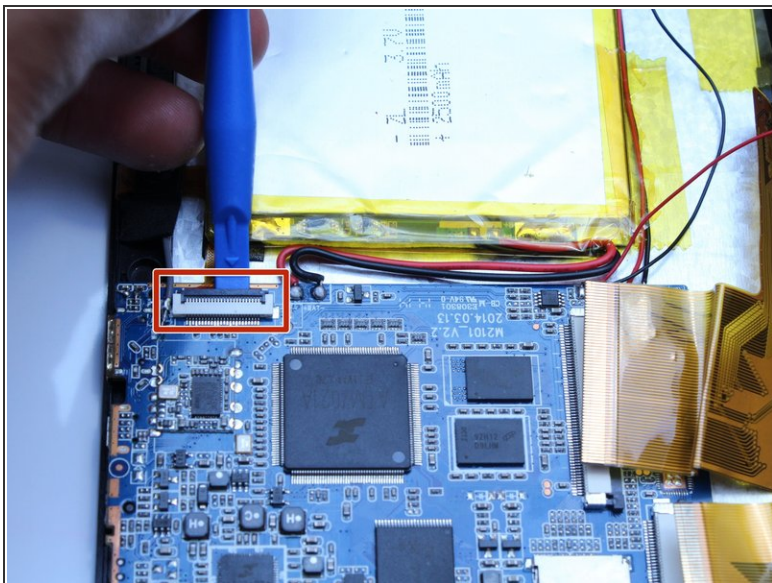


## Step 6



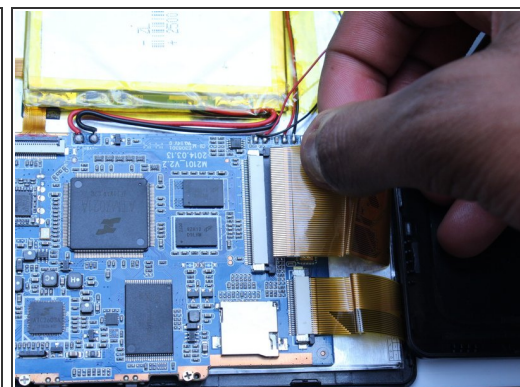
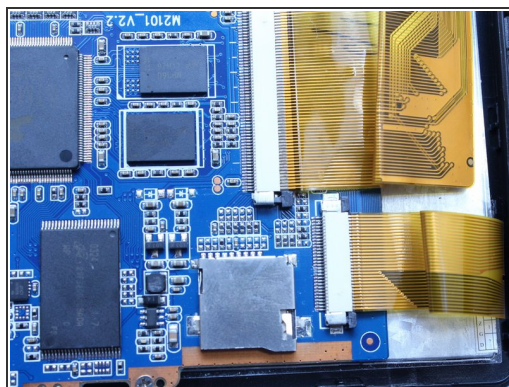
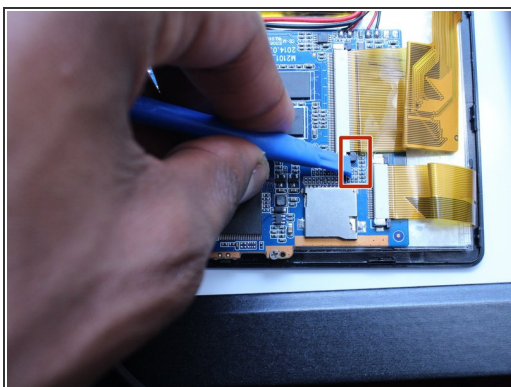
- Using a soldering iron, desolder the contact points of the speaker, battery and screen on the motherboard
- ⓘ If soldering is new to you, check out [this helpful guide](#) on soldering and desoldering connections.
- Use pliers to pull the wire from the board

## Step 7



- Using the spudger, disconnect the ribbon cable connecting the camera to the motherboard

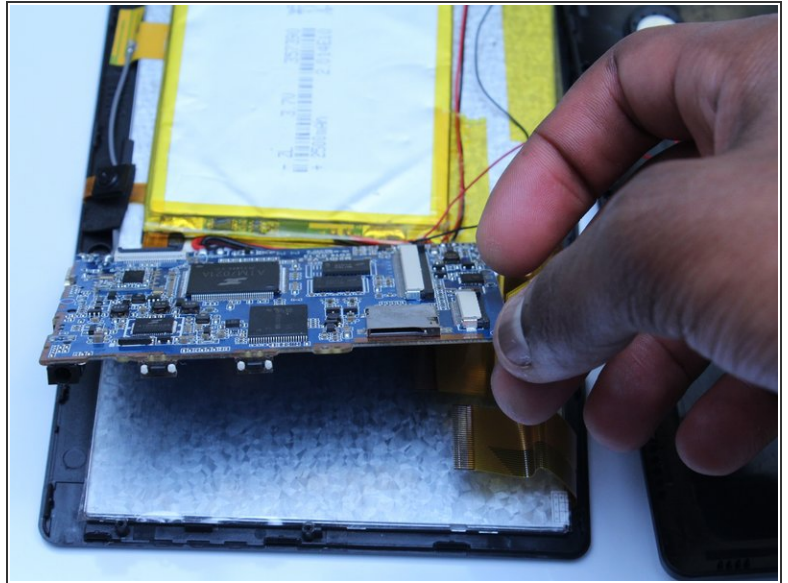
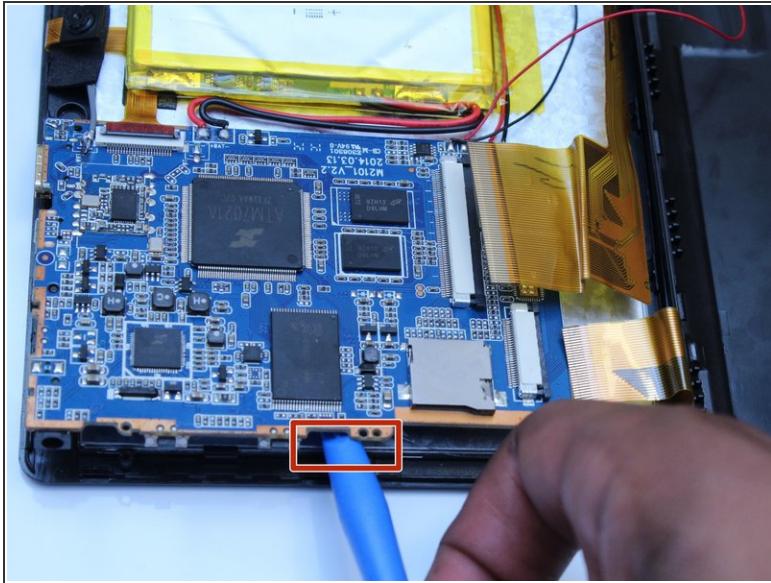
## Step 8



- Using the spudger, push the black tabs towards the ribbon cable to unlock the ribbon cables that connect the screen to the motherboard.
- Gently pull and remove the ribbon cables from the motherboard



## Step 9



- Using the flat side of the spudger, lift up the mother board to disconnect from the screen.

To reassemble your device, follow these instructions in reverse order.