



# Toshiba Satellite R15-S829 Hard Drive Replacement

If the hard drive to your computer isn't functioning properly, this guide will show how to take the hard drive out and replace it.

Written By: Mike Strother



---

## INTRODUCTION

This is a guide to replace the hard drive. You may need to replace the hard drive if your laptop wont turn on. This guide is also useful if you want to upgrade your laptop to have more hard drive space.

---



### TOOLS:

- [Phillips #0 Screwdriver](#) (1)
  - [64 Bit Driver Kit](#) (1)
-

## Step 1 — Battery Replacement



⚠ Unplug the charging cable from the laptop.

- Turn off the laptop.
- Turn the laptop over and locate the battery.

## Step 2



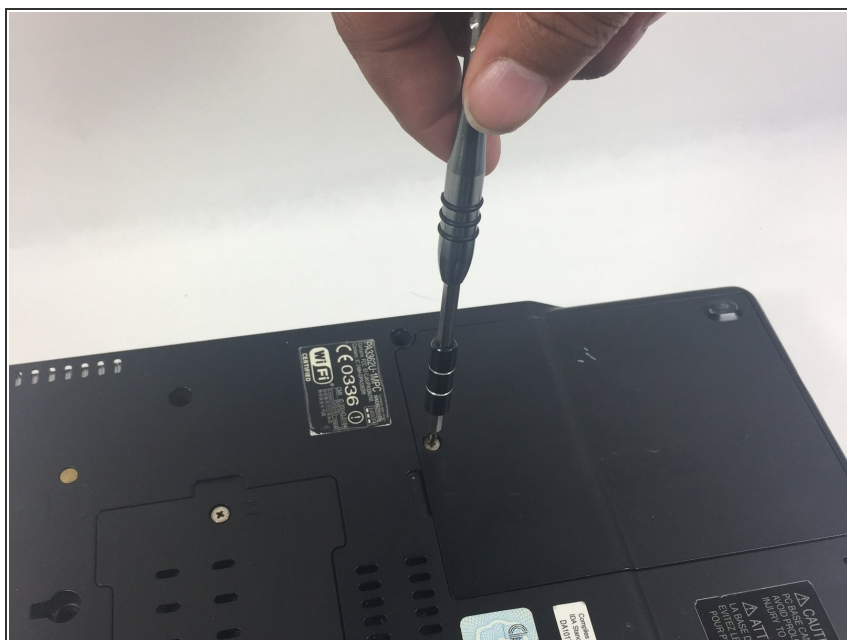
- Push the small switch near the corner of the laptop to the unlocked position.
- Push the bigger switch in the direction of the icon and pull the battery away from the laptop.

## Step 3 — Hard Drive Replacement



- First, begin by locating the spot of the cover of the hard drive located on the bottom of the laptop.

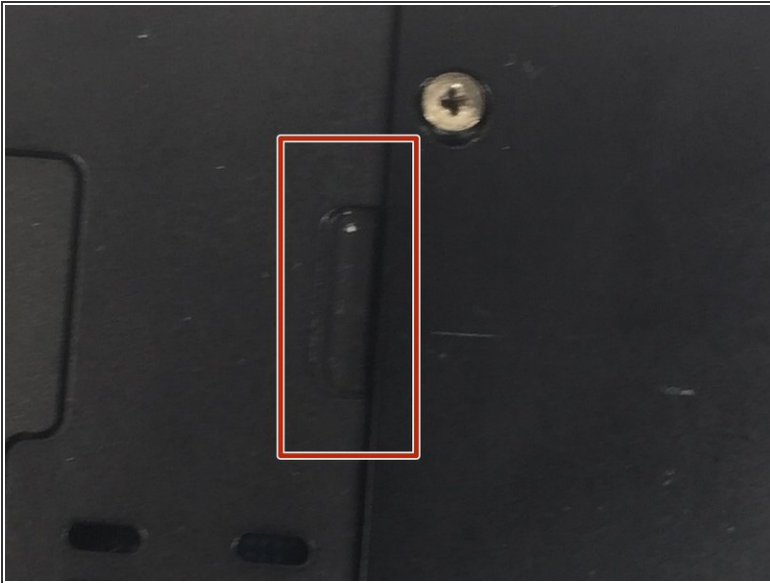
## Step 4



- Remove the screw of the cover.

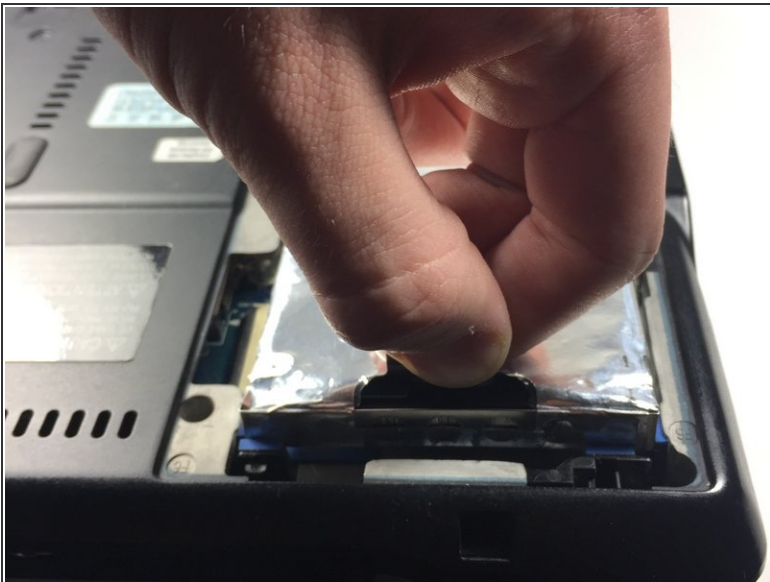


## Step 5



- Locate the indent where the hard drive can be removed. Remove the cover.

## Step 6



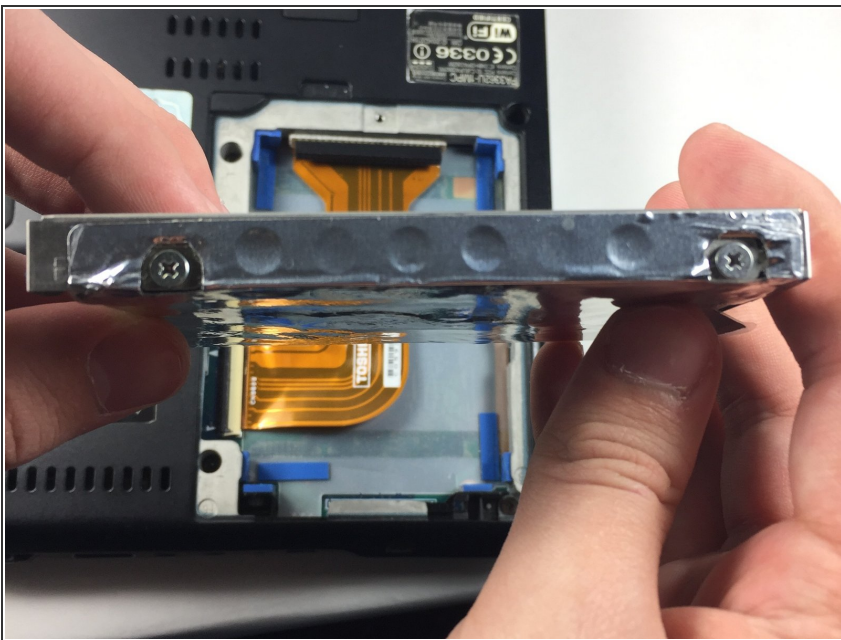
- Remove the hard drive using your hand.

## Step 7



- Now remove the power ribbon from the hard drive.

## Step 8



- Locate the screws on each side of the encasing of the hard drive.



## Step 9



- Use your Phillips screwdriver to remove the screws and be careful not to lose the screws.

## Step 10



- Remove the encasing from the hard drive.

To reassemble your device, follow these instructions in reverse order.