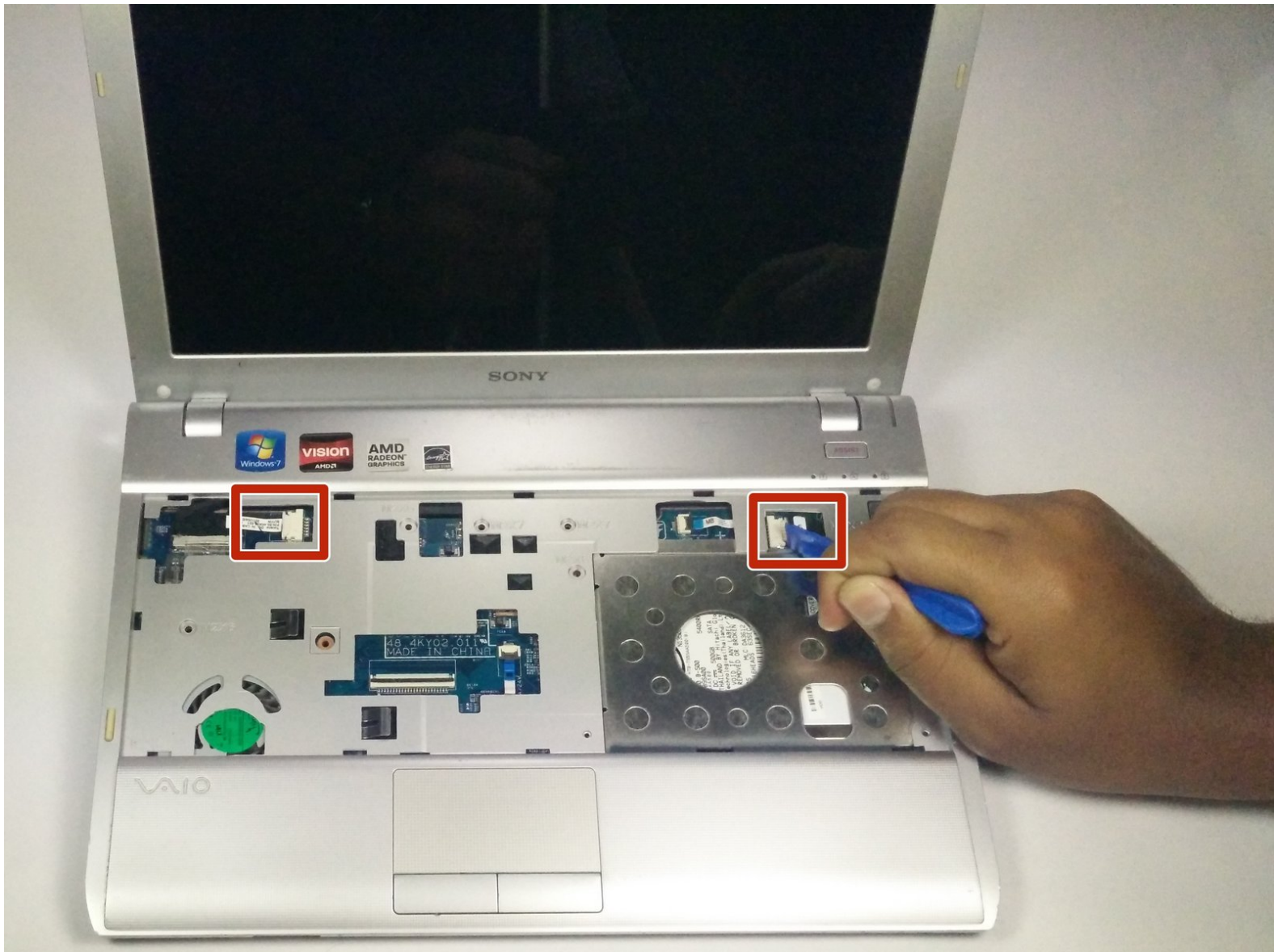




Sony Vaio PCG-31311L Motherboard Replacement

This guide will show how to access and remove the motherboard from the device.

Written By: Tyler

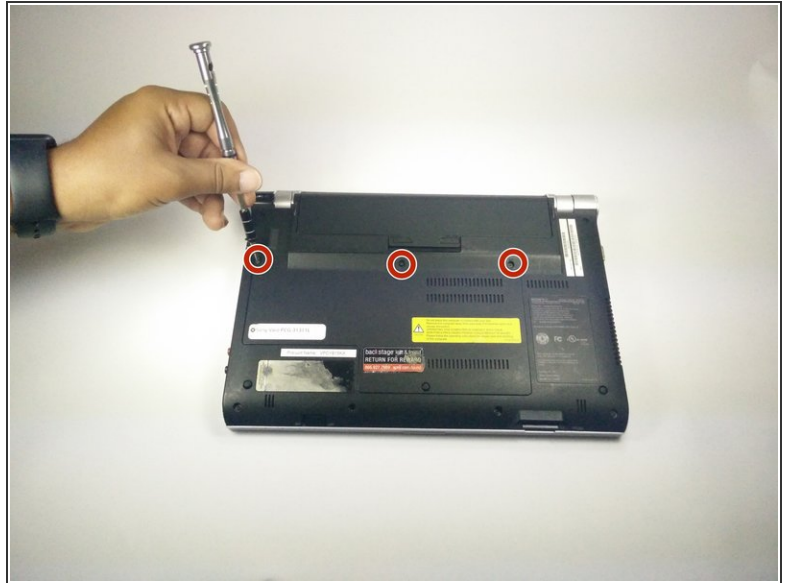




TOOLS:

- [iFixit Opening Tools](#) (1)
-

Step 1 — Keyboard



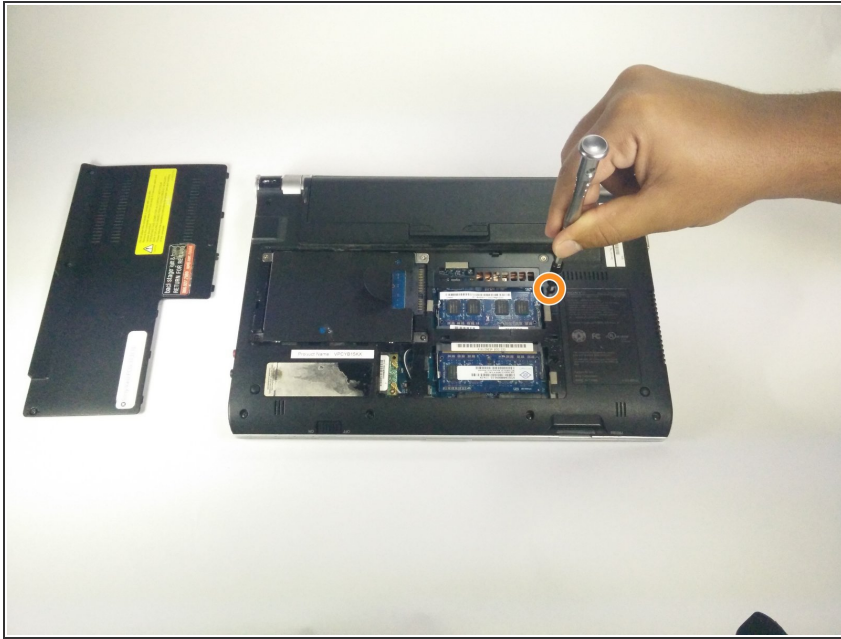
- Start with device closed, powered off, and upside down.
- Locate 3 screws on the bottom plate and unscrew
- ⓘ These screws do not detach from the bottom plate.

Step 2



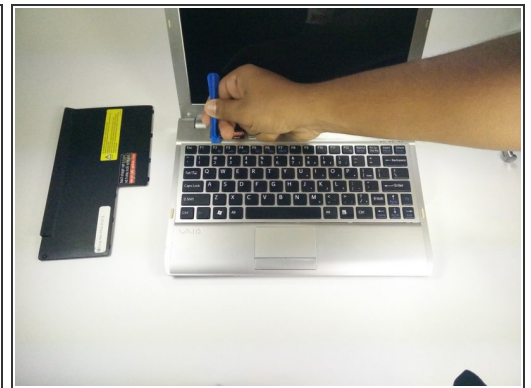
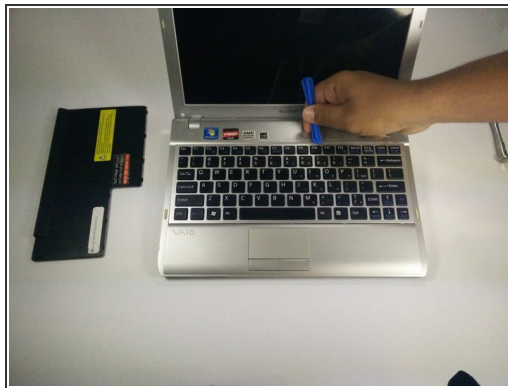
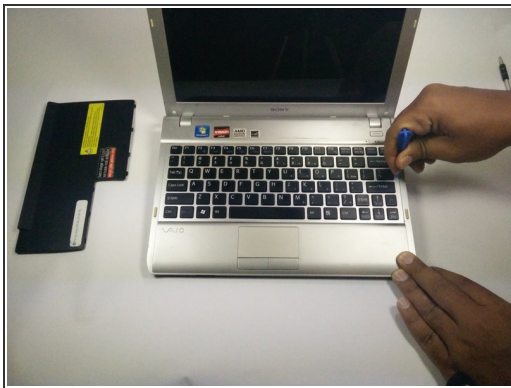
- Use a plastic opening tool to pry up on the plate and remove from device.

Step 3



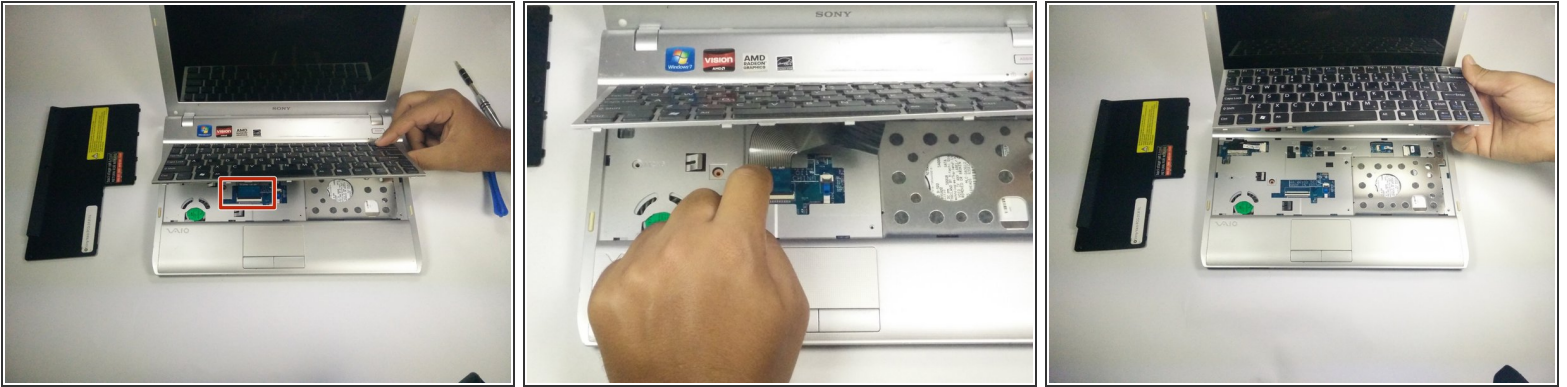
- Locate screw labeled "KB" and remove.

Step 4



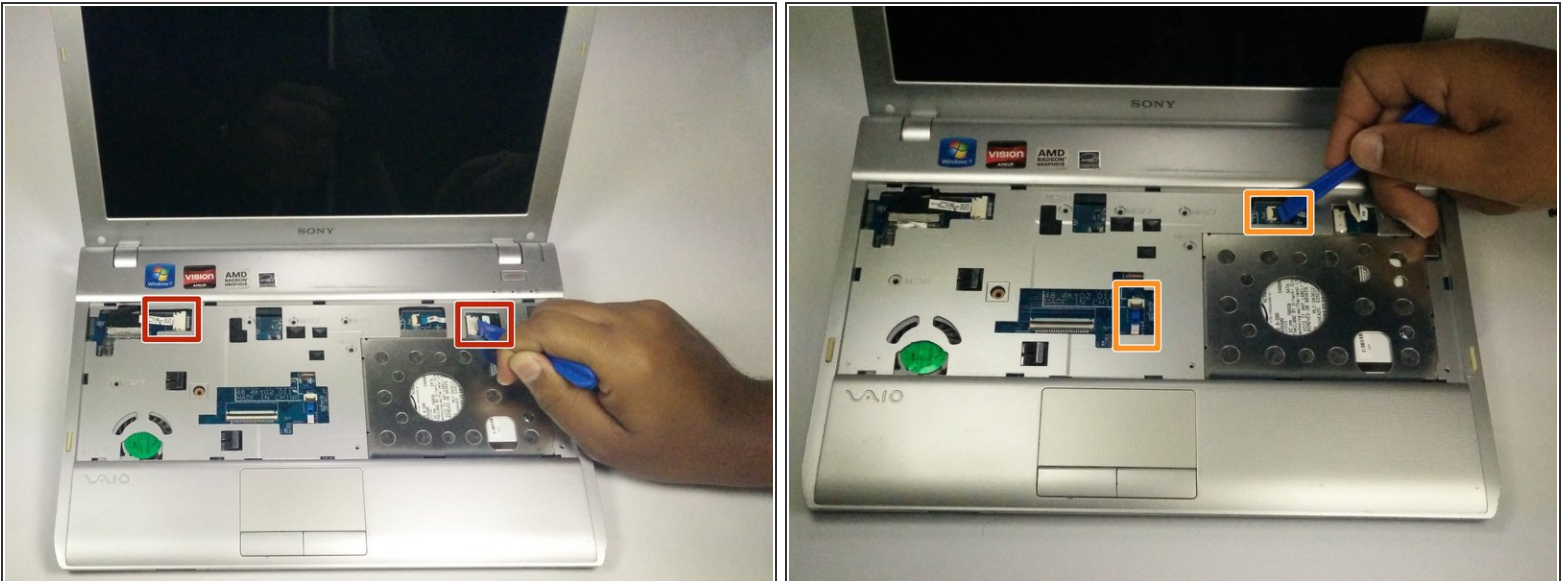
- Use a plastic opening tool tool to pry around the edge of the keyboard.

Step 5



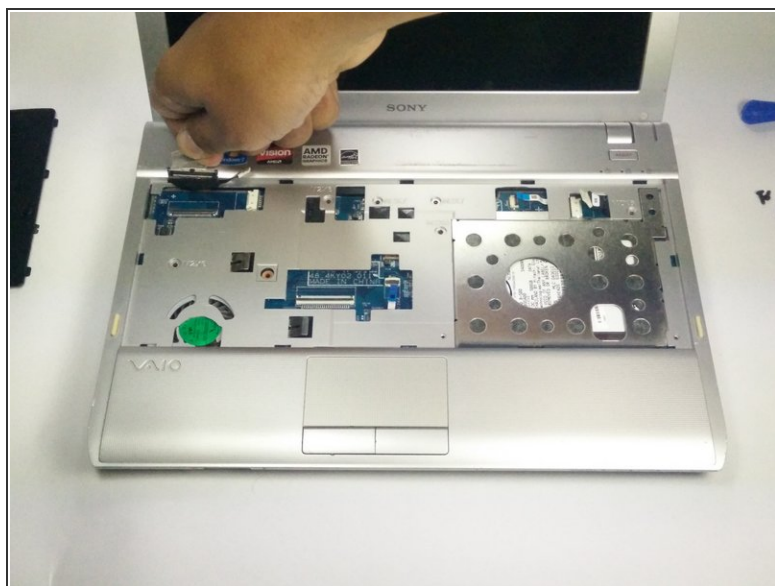
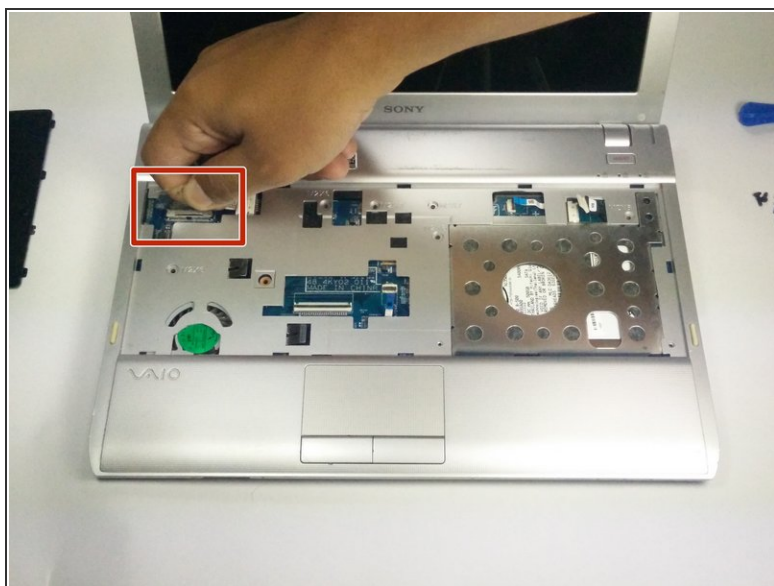
- Once detached, tilt the keyboard forward, exposing a blue ribbon cable.
- Place finger on black tab and pull back. Then, give a gentle tug on the ribbon cable and it will detach.
- Once the ribbon cable has been detached, lift the keyboard away from the device.

Step 6 — Motherboard



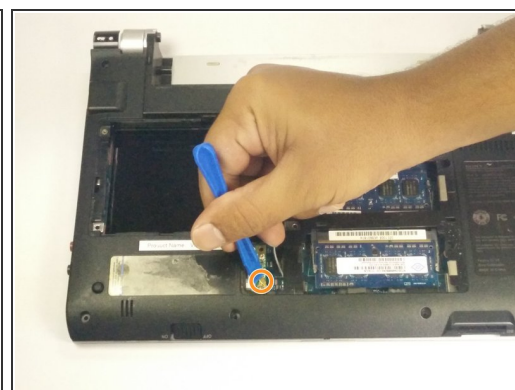
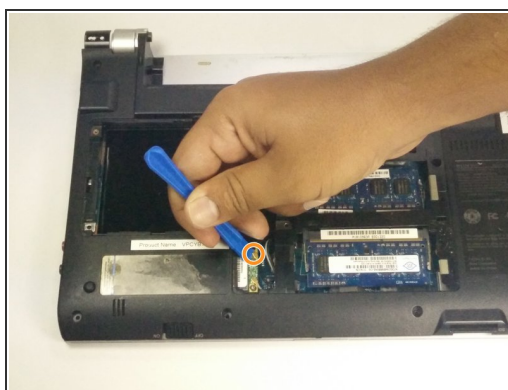
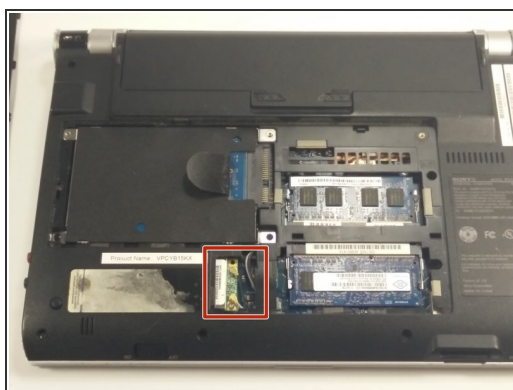
- Use the plastic opening tool to pull back the ribbon cables attached to the motherboard
- Use the plastic opening tool to pop up the black tabs and pull the remaining ribbon cables.

Step 7



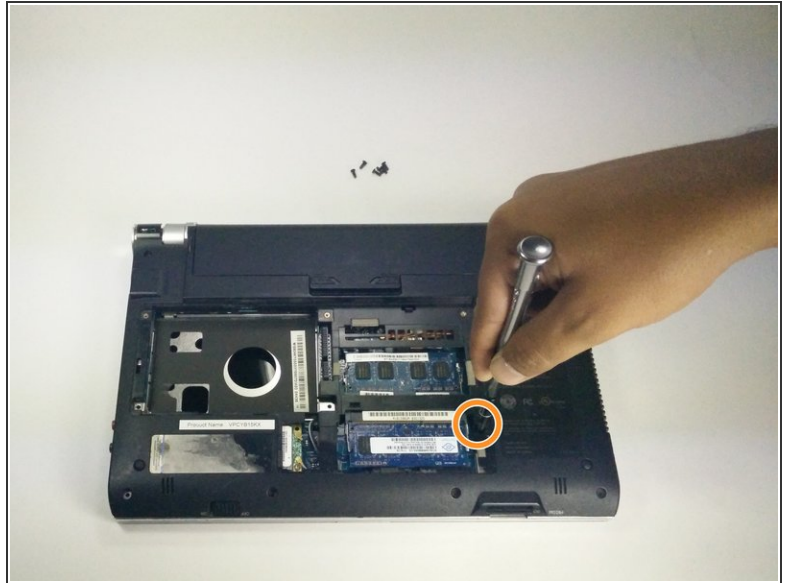
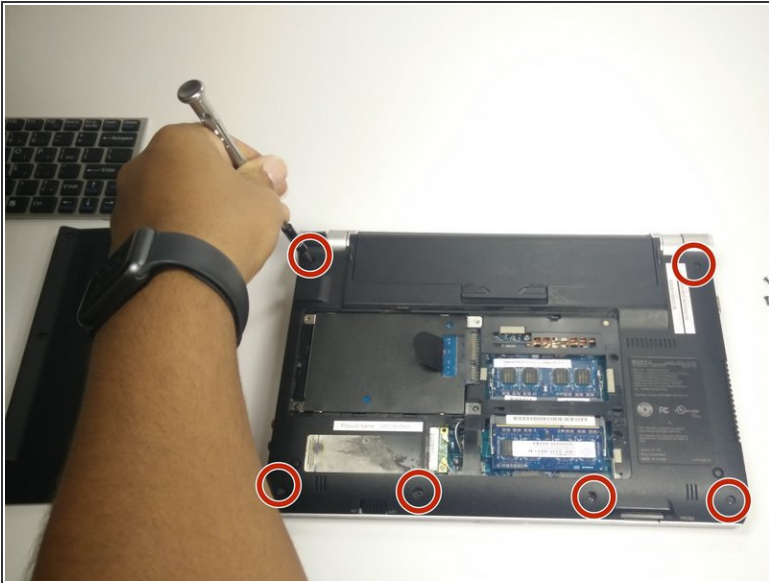
- Locate the LCD ribbon cable
- Pull up and away from device to detach the LCD ribbon cable.

Step 8



- Close and flip over laptop.
- Locate the WiFi network card.
- Use the plastic opening tool to pry up the two connectors.

Step 9



- Locate the 6 screws on the bottom and remove.
- Remove the final screw in the center to release the motherboard from the case.

To reassemble your device, follow these instructions in reverse order.