



# Astro A40 TR Internal wiring components

## Replacement

The following is a short guide to expose and, if needed, replace the internal wiring components.

Written By: Mike





## TOOLS:

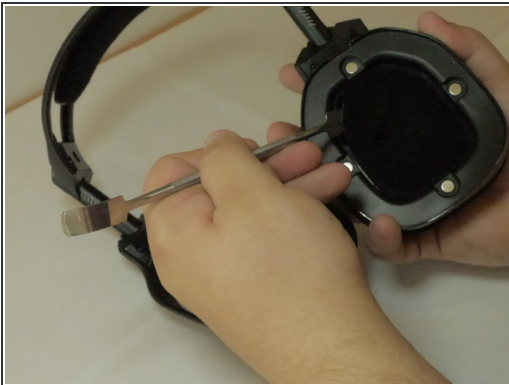
- [Soldering Workstation](#) (1)
  - [Spudger](#) (1)
  - [Phillips #00 Screwdriver](#) (1)
-

## Step 1 — Speakers



- To access the speakers you need to disassemble the earpiece. First remove the foam ear piece by simply pinching the padding and pulling lightly until the magnets disengage.

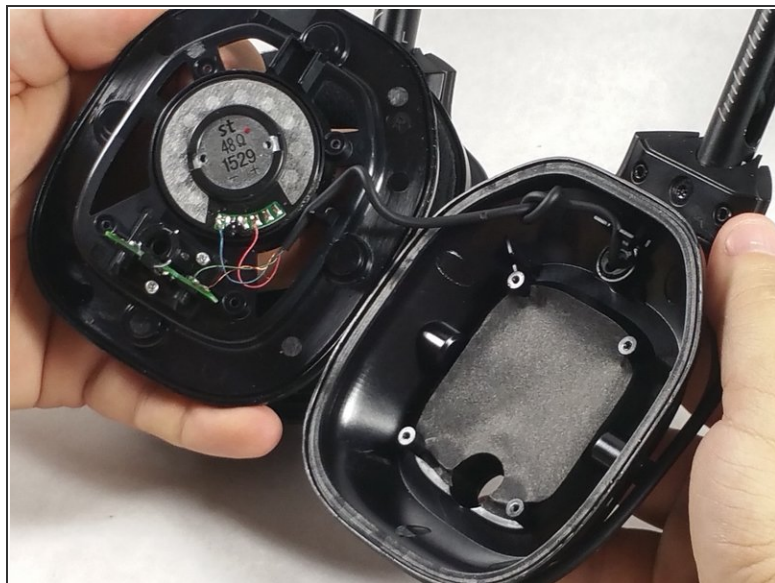
## Step 2



- Remove the dust cover located on the speaker. Use the corner of the spudger to peel underneath the cover until you can lift it by hand. The cover is held onto the device with adhesive and should be removed slowly.

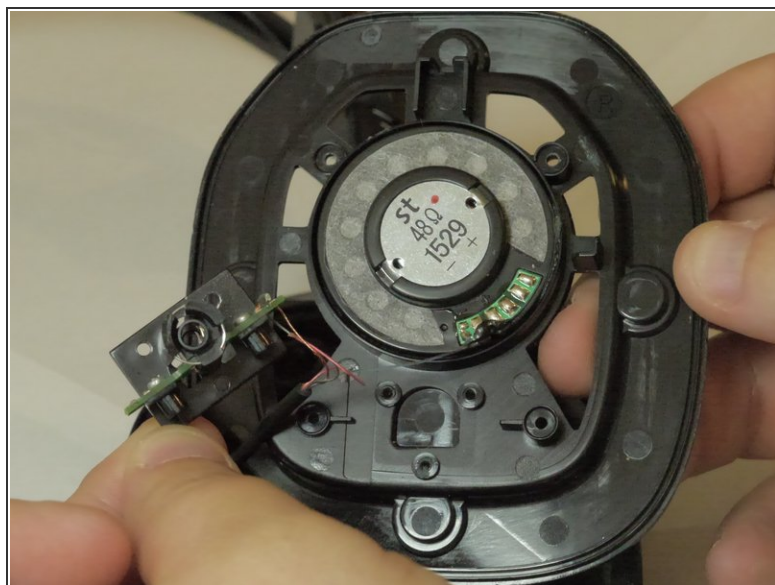


### Step 3



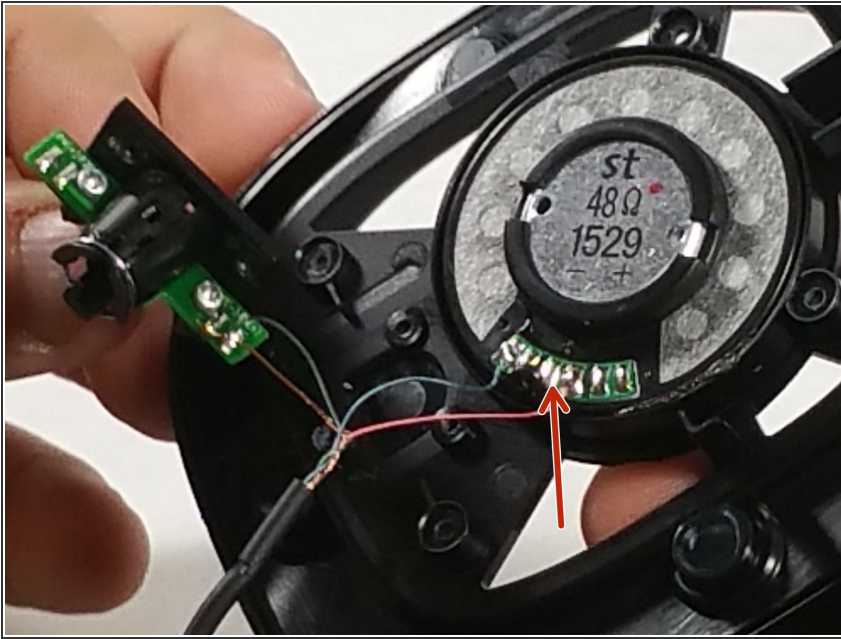
- Take off the front cover by removing the four screws located in a square formation on the surface of the device. Use the J00 Philips driver listed in the device page.

### Step 4



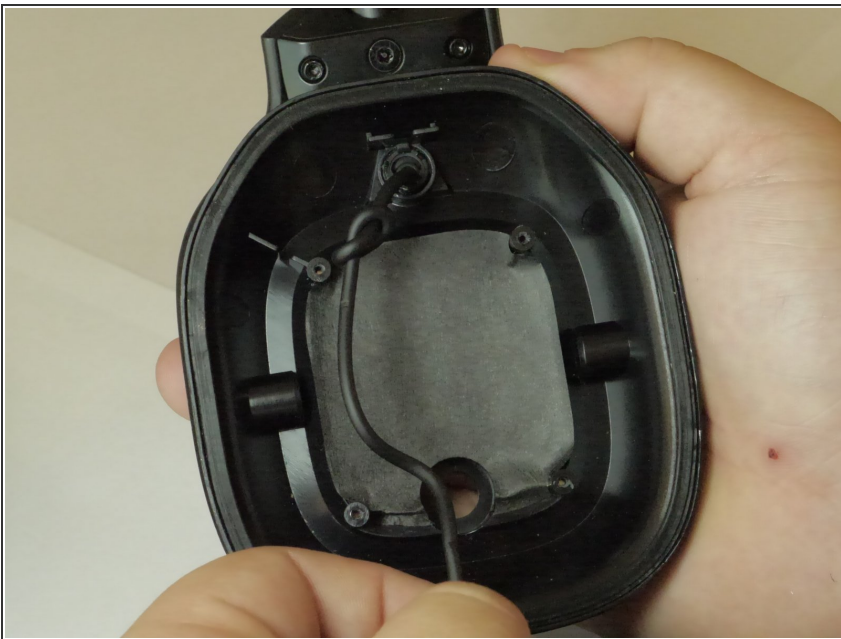
- Locate the three small screws under the speaker. Use the J00 Philips Driver to remove them.

## Step 5



- If your issue is asking for the complete replacement of the speaker or the motherboard, unsolder the old components and replace with new speaker by re-soldering.
- ⓘ Check out this useful guide on [how to solder and desolder connections](#) if soldering is new to you.

## Step 6 — Internal wiring components



- Untie the disconnected wiring harness.

## Step 7



- Pull the black wire out of the hole in the device.

To reassemble your device, follow these instructions in reverse order.